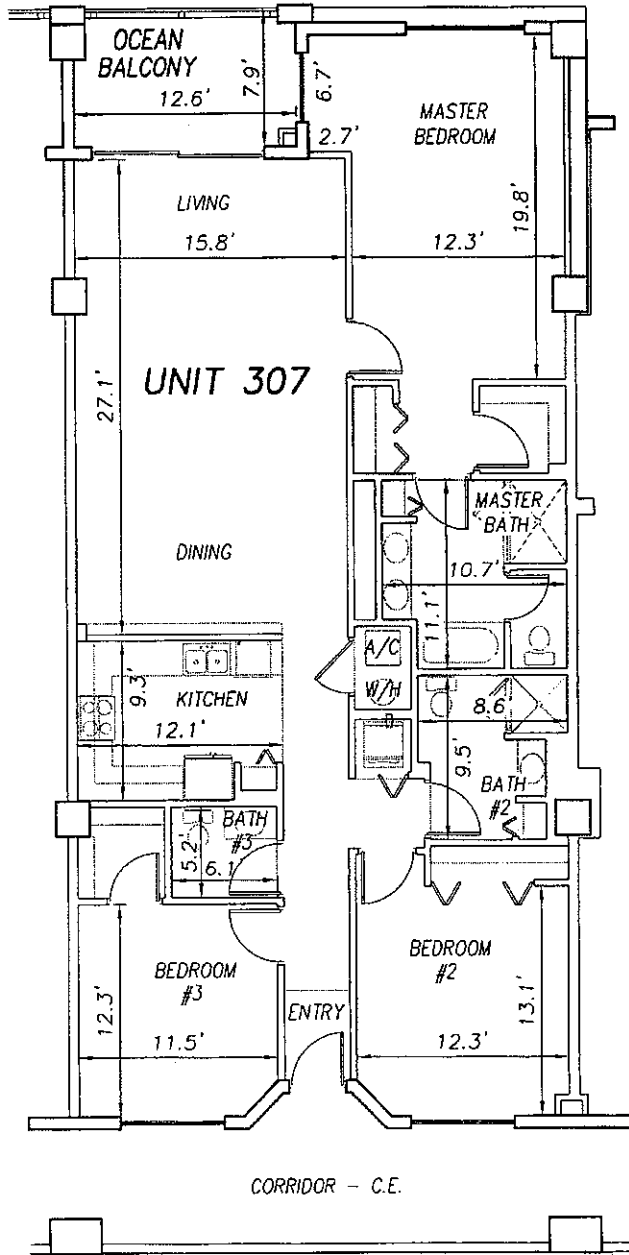


0 10 20

SCALE 1" = 10'

OFF REC 0983 PAGE 0227

EXHIBIT 'B'



UNIT 306

UNIT 307

UNIT 308

CORRIDOR - C.E.

**SURF CLUB II  
CONDOMINIUM**

SITUATED IN MATANZAS SHORES  
FLAGLER COUNTY, FLORIDA

**THIRD FLOOR - UNIT 307 (North Wing)**



**TOMOKA ENGINEERING**

CIVIL ENGINEERING & LAND SURVEYING SINCE 1976  
DAYTONA BEACH FLAGLER/PALM COAST

Main Office: 900 So. Ridgewood Ave., Daytona Beach, FL 32114  
Phone: 386-257-1600 Fax: 386-257-1601  
email: tomoka@tomoka-eng.com website: www.tomoka@tomoka-eng.com

DATE ISSUED: 07/23/2003

JOB # T3070PCBW1

SHEET 66 OF 213 SHEETS

P:\land projects T2003\T3070PCBW1\dwg\CONDO-sh 58 - 83 3rd Fl.dwg 09/11/2003 09:36:31 AM EDT

0 10 20

SCALE 1" = 10'

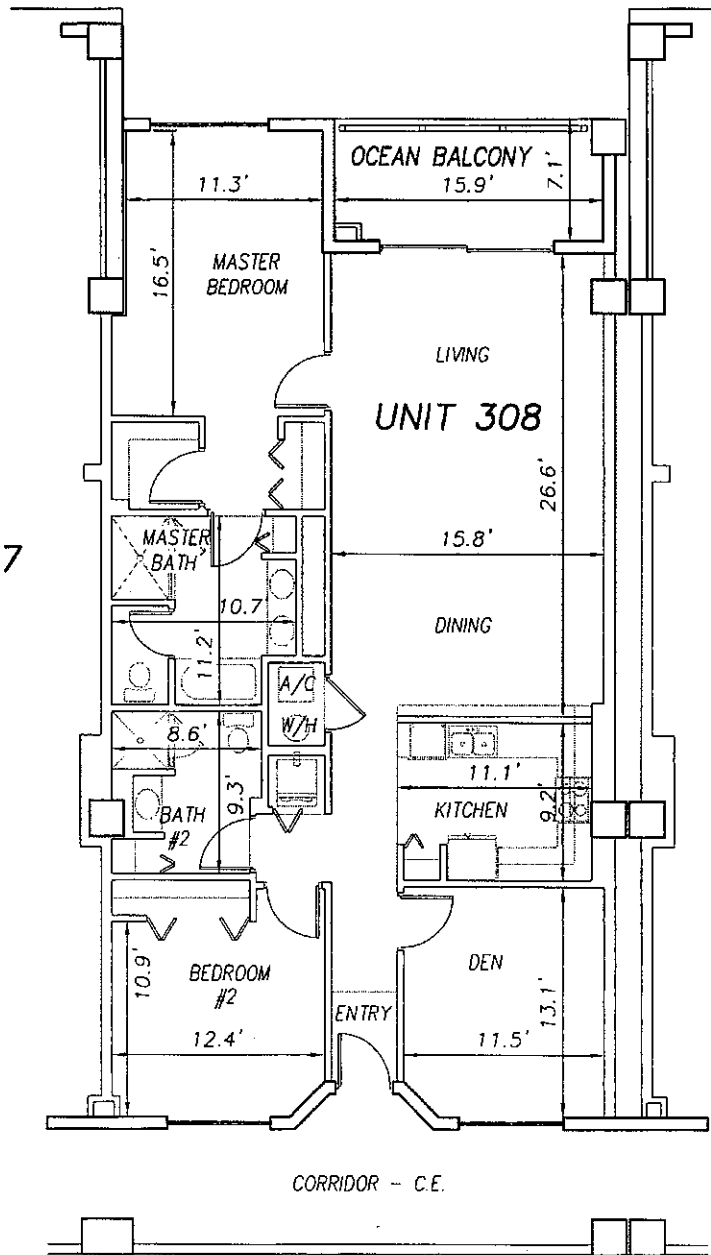
OFF REC 0983 PAGE 0228

EXHIBIT 'B'



UNIT 307

UNIT 309



P:\cond projects T2003\T3070PCBWI.dwg\CONDO-sh 58 - 83 3rd Fl.dwg 09/11/2003 09:36:31 AM EDT

**SURF CLUB II  
CONDOMINIUM**

SITUATED IN MATANZAS SHORES  
FLAGLER COUNTY, FLORIDA

**THIRD FLOOR - UNIT 308 (North Wing)**



**TOMOKA ENGINEERING**

CIVIL ENGINEERING & LAND SURVEYING SINCE 1976  
DAYTONA BEACH FLAGLER/PALM COAST  
Main Office: 300 So. Ridgewood Ave., Daytona Beach, FL 32114  
Phone: 386-257-1600 Fax: 386-257-1601  
email: tomoka@tomoka-eng.com website: www.tomoka@tomoka-eng.com

DATE ISSUED: 07/23/2003

JOB # T3070PCBWI

SHEET 67 OF 213 SHEETS

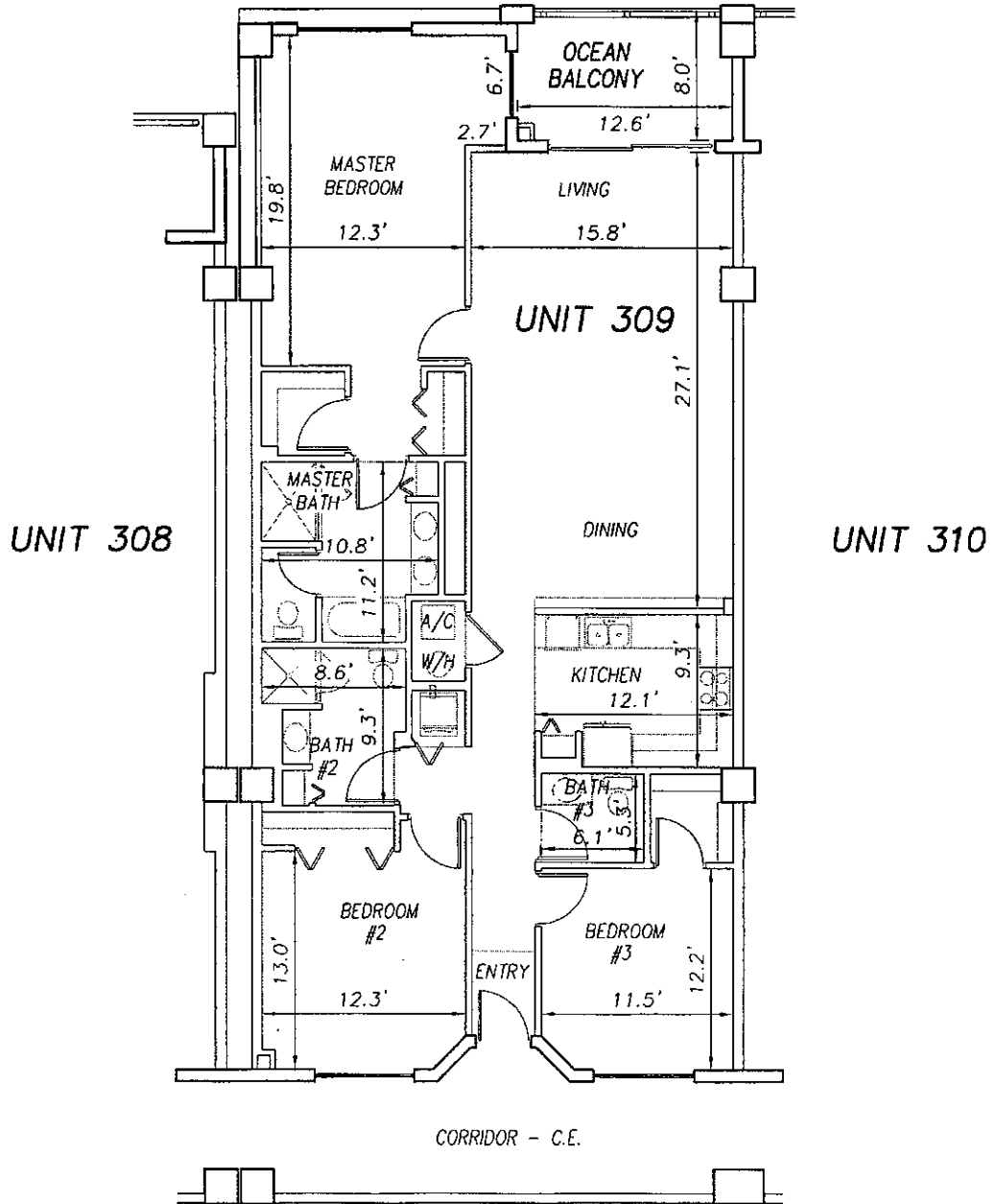
0 10 20



SCALE 1" = 10'

OFF REC 0983 PAGE 0229

EXHIBIT 'B'



P:\land projects\T2003\T3070PCBW\dwg\CONDO-sh 58 - 83 3rd Fl.dwg 09/11/2003 09:36:31 AM EDT

**SURF CLUB II  
CONDOMINIUM**

SITUATED IN MATANZAS SHORES  
FLAGLER COUNTY, FLORIDA

**THIRD FLOOR - UNIT 309 (North Wing)**



LB 2237

**TOMOKA ENGINEERING**

CIVIL ENGINEERING & LAND SURVEYING SINCE 1976  
DAYTONA BEACH FLAGLER/PALM COAST  
Main Office: 900 So. Ridgewood Ave., Daytona Beach, FL 32114  
Phone: 386-257-1800 Fax: 386-257-1801  
email: tomoka@tomoka-mg.com www.tomoka-tomoka-mg.com

DATE ISSUED: 07/23/2003

JOB # T3070PCBW1

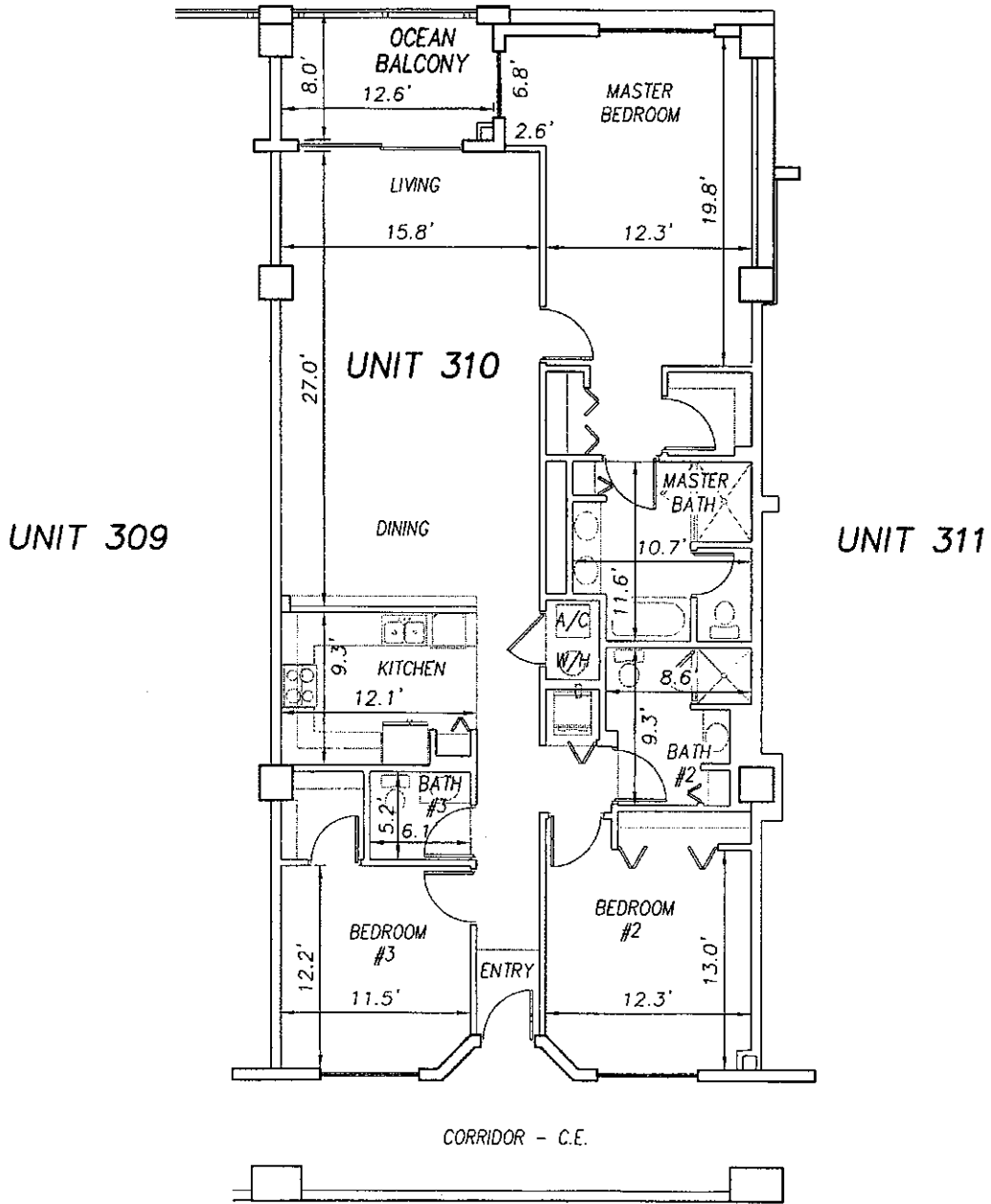
SHEET 68 OF 213 SHEETS

0 10 20

SCALE 1" = 10'

OFF REC 0983 PAGE 0230

EXHIBIT 'B'



P:\land projects T2003\T3070PCBWI\dwg\CONDO-sh 58 - 83 3rd Fl.dwg 09/11/2003 09:36:31 AM EDT

**SURF CLUB II  
CONDOMINIUM**  
SITUATED IN MATANZAS SHORES  
FLAGLER COUNTY, FLORIDA  
**THIRD FLOOR - UNIT 310 (North Wing)**



**TOMOKA ENGINEERING**  
CIVIL ENGINEERING & LAND SURVEYING SINCE 1976  
DAYTONA BEACH FLAGLER/PALM COAST  
Main Office: 900 So. Ridgewood Ave., Daytona Beach, FL 32114  
Phone: 386-257-1600 Fax: 386-257-1601  
email: tomoka@tomoka-eng.com website: www.tomoka@tomoka-eng.com

DATE ISSUED: 07/23/2003

JOB # T3070PCBWI

SHEET 69 OF 213 SHEETS

0 10 20

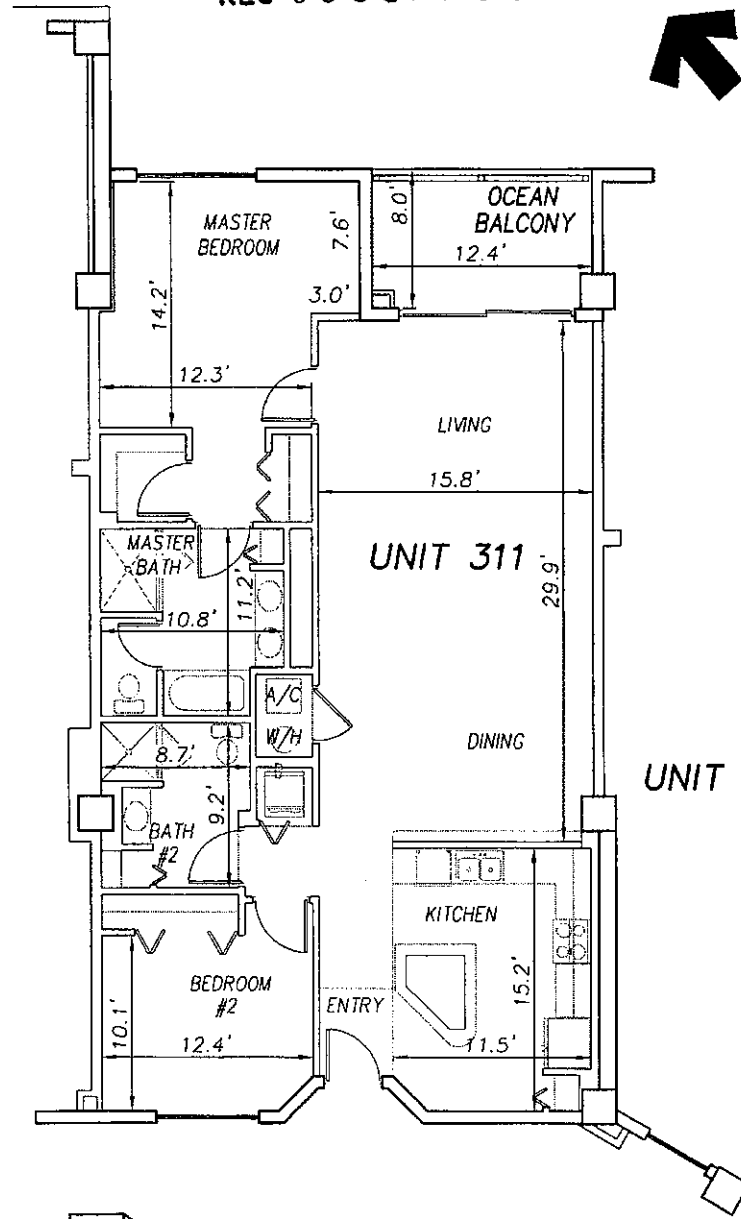
SCALE 1" = 10'

OFF REC 0983 PAGE 0231 EXHIBIT 'B'

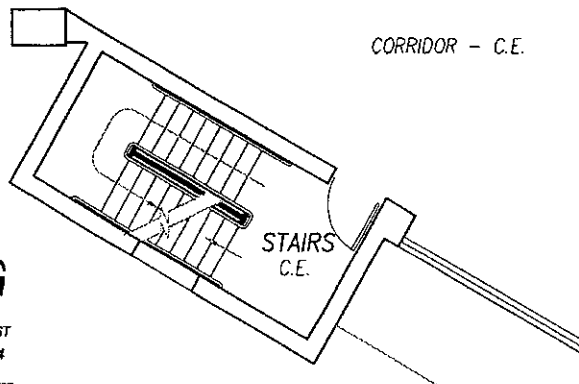


UNIT 310

UNIT 312



CORRIDOR - C.E.



**SURF CLUB II  
CONDOMINIUM**  
SITUATED IN MATANZAS SHORES  
FLAGLER COUNTY, FLORIDA  
**THIRD FLOOR - UNIT 311 (North Wing)**



**TOMOKA ENGINEERING**  
CIVIL ENGINEERING & LAND SURVEYING SINCE 1976  
DAYTONA BEACH FLAGLER/PALM COAST  
Main Office: 900 So. Ridgewood Ave., Daytona Beach, FL 32114  
Phone: 386-257-1600 Fax: 386-257-1601  
email: tomoka@tomoka-eng.com website: www.tomoka@tomoka-eng.com

DATE ISSUED: 07/23/2003

JOB # T3070PCBW1

SHEET 70 OF 213 SHEETS

P:\land projects T2003\T3070PCBW1\dwg\CONDO-sh 58 - 83 3rd Fl.dwg 09/11/2003 09:36:31 AM EDT

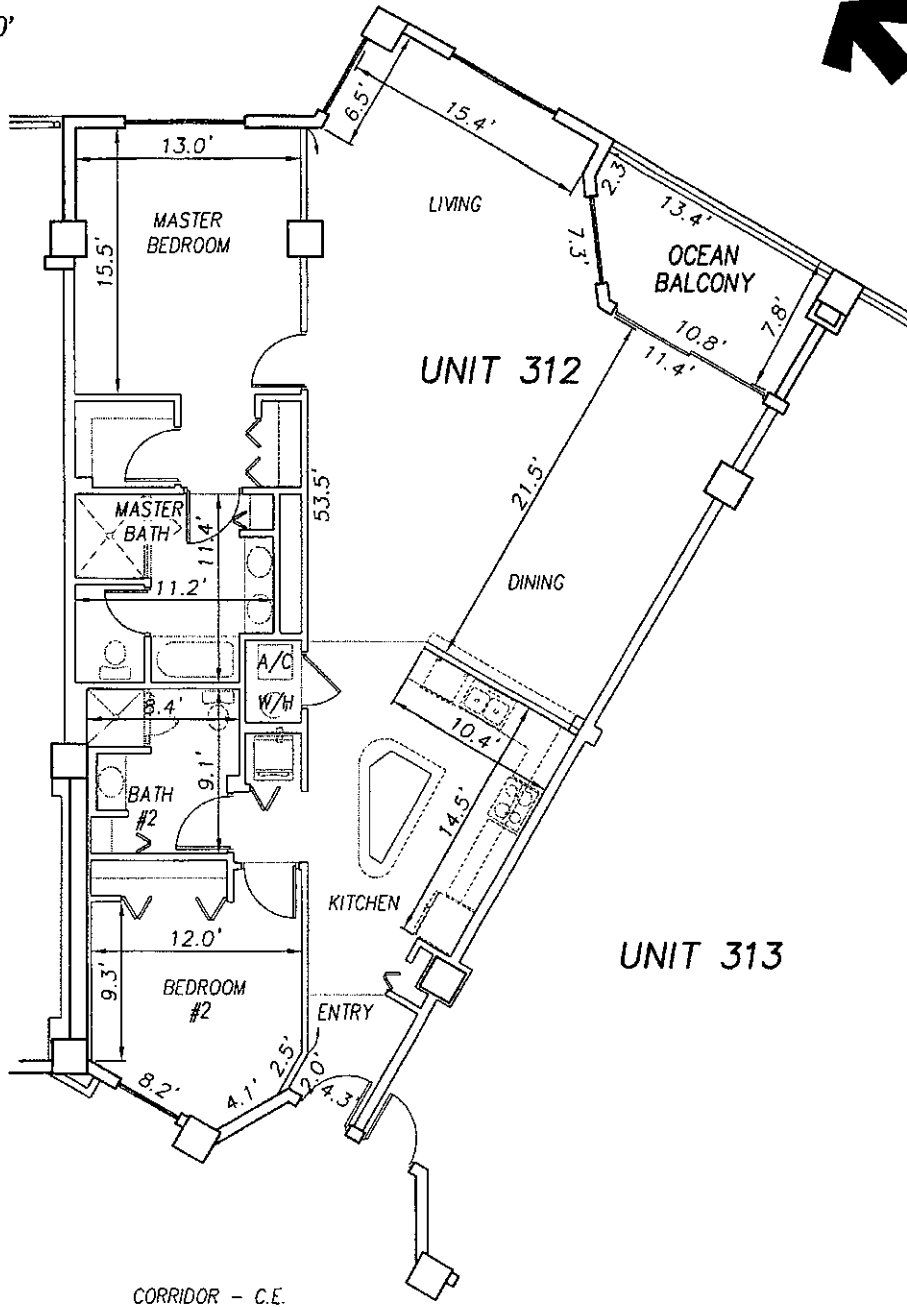
0 10 20

SCALE 1" = 10'

OFF REC 0983 PAGE 0232 EXHIBIT 'B'



UNIT 311



UNIT 313

P:\cond projects T2003\T3070PCBW\dwg\CONDO-sh 58 - 83 3rd Fl.dwg 09/11/2003 09:36:31 AM EDT

**SURF CLUB II**  
**CONDOMINIUM**  
 SITUATED IN MATANZAS SHORES  
 FLAGLER COUNTY, FLORIDA  
**THIRD FLOOR - UNIT 312 (North Wing)**



**TOMOKA ENGINEERING**  
 CIVIL ENGINEERING & LAND SURVEYING SINCE 1976  
 DAYTONA BEACH FLAGLER/PALM COAST  
 Main Office: 900 So. Ridgewood Ave., Daytona Beach, FL 32114  
 Phone: 386-257-1600 Fax: 386-257-1501  
 email: tomoka@tomoka-eng.com website: www.tomoka@tomoka-eng.com

DATE ISSUED: 07/23/2003

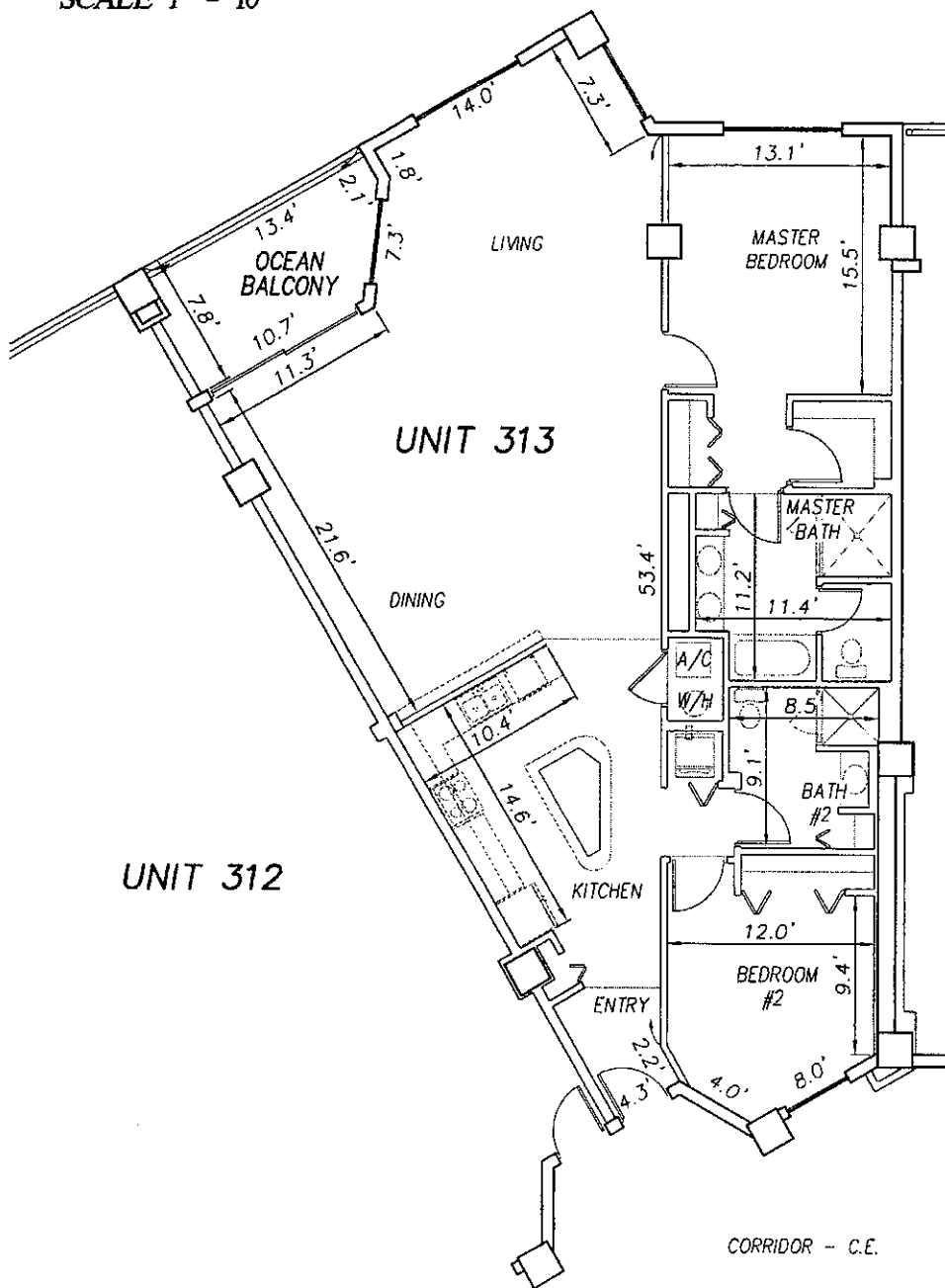
JOB # T3070PCBWI

SHEET 71 OF 213 SHEETS

0 10 20

SCALE 1" = 10'

OFF REC 0983 PAGE 0233 EXHIBIT 'B'



P:\cond projects T2003\T3070PCBW\COND-sh 58 - 83 3rd Fl.dwg 09/11/2003 09:36:31 AM EDT

**SURF CLUB II  
CONDOMINIUM**

SITUATED IN MATANZAS SHORES  
FLAGLER COUNTY, FLORIDA

**THIRD FLOOR - UNIT 313 (South Wing)**



**TOMOKA ENGINEERING**

CIVIL ENGINEERING & LAND SURVEYING SINCE 1976  
DAYTONA BEACH FLAGLER/PALM COAST  
Main Office: 900 So. Fildeswood Ave., Daytona Beach, FL 32114  
Phone: 386-257-1600 Fax: 386-257-1601  
email: tomoka@tomoka-eng.com website: www.tomoka@tomoka-eng.com

DATE ISSUED: 07/23/2003

JOB # T3070PCBW1

SHEET 72 OF 213 SHEETS

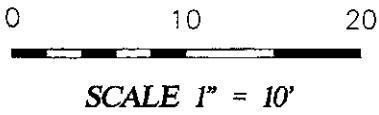
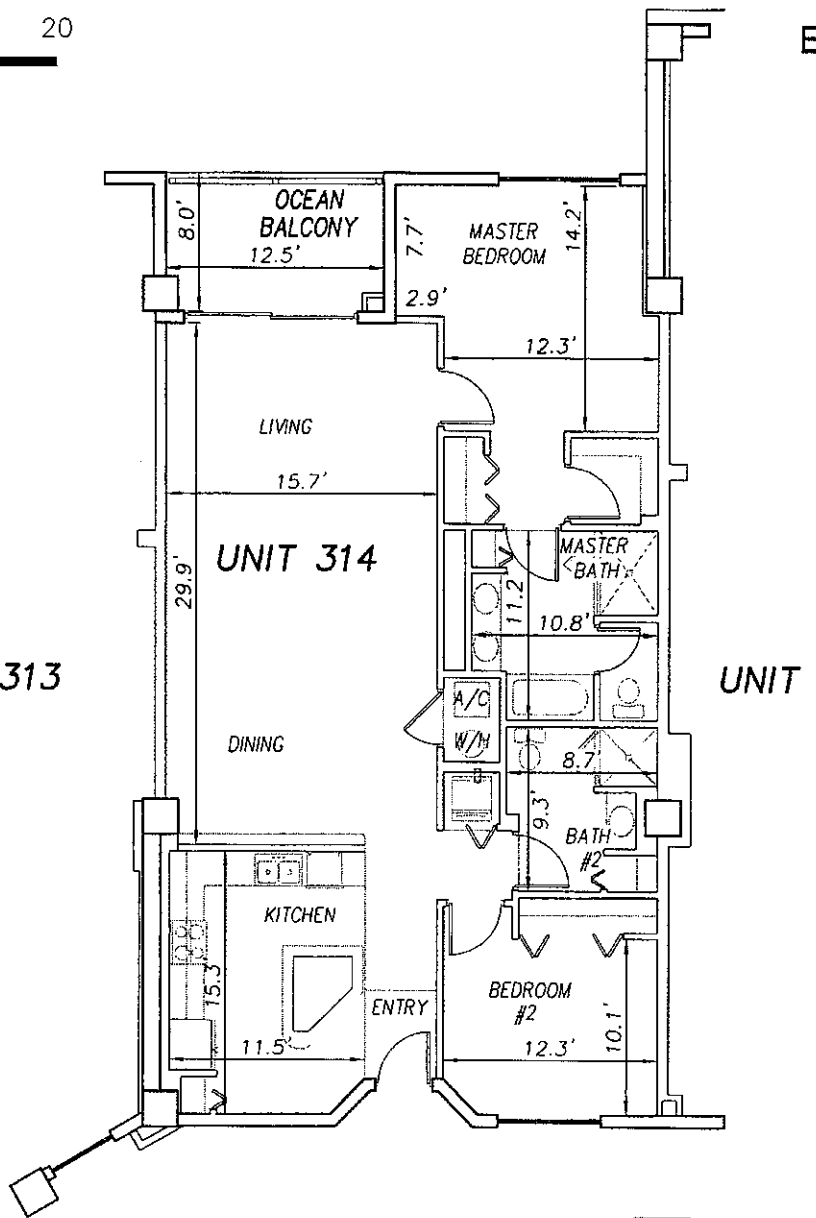


EXHIBIT 'B'

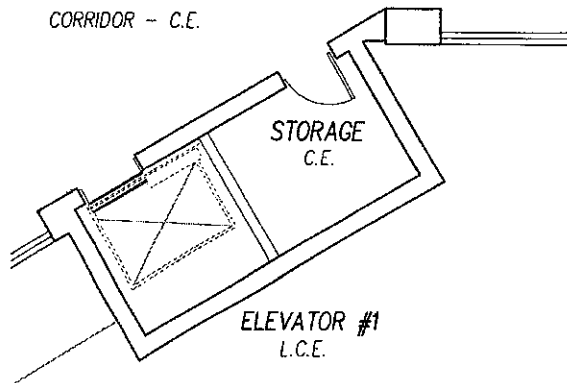


UNIT 313

UNIT 314

UNIT 315

CORRIDOR - C.E.



**SURF CLUB II  
CONDOMINIUM**

SITUATED IN MATANZAS SHORES  
FLAGLER COUNTY, FLORIDA

**THIRD FLOOR - UNIT 314 (South Wing)**



**TOMOKA ENGINEERING**

CIVIL ENGINEERING & LAND SURVEYING SINCE 1976  
DAYTONA BEACH FLAGLER/PALM COAST  
Main Office: 900 So. Ridgewood Ave., Daytona Beach, FL 32114  
Phone: 386-257-1600 Fax: 386-257-1601  
email: tomoka@tomoka-eng.com website: www.tomoka@tomoka-eng.com

LB #1232

DATE ISSUED: 07/23/2003

JOB # T3070PCBWI

SHEET 73 OF 213 SHEETS

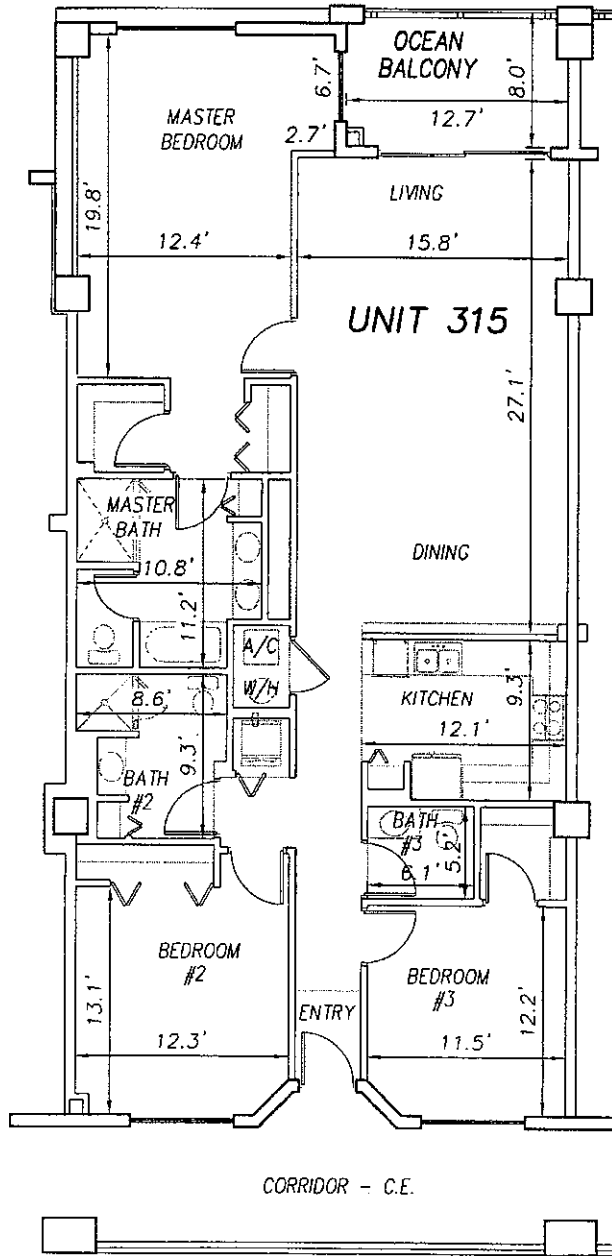
P:\land projects T2003\T3070PCBWI\dwg\CONDO-sh 58 - 83 3rd Fl.dwg 09/11/2003 09:56:31 AM EDT



0 10 20

SCALE 1" = 10'

EXHIBIT 'B'



UNIT 314

UNIT 316

**SURF CLUB II  
CONDOMINIUM**

SITUATED IN MATANZAS SHORES  
FLAGLER COUNTY, FLORIDA

**THIRD FLOOR - UNIT 315 (South Wing)**



**TOMOKA ENGINEERING**

CIVIL ENGINEERING & LAND SURVEYING SINCE 1976  
DAYTONA BEACH FLAGLER/PALM COAST  
Main Office: 900 So. Ridgewood Ave., Daytona Beach, FL 32114  
Phone: 386-257-1800 Fax: 386-257-1801  
email: tomoka@tomoka-eng.com website: www.tomoka@tomoka-eng.com

DATE ISSUED: 07/23/2003

JOB # T3070PCBWI

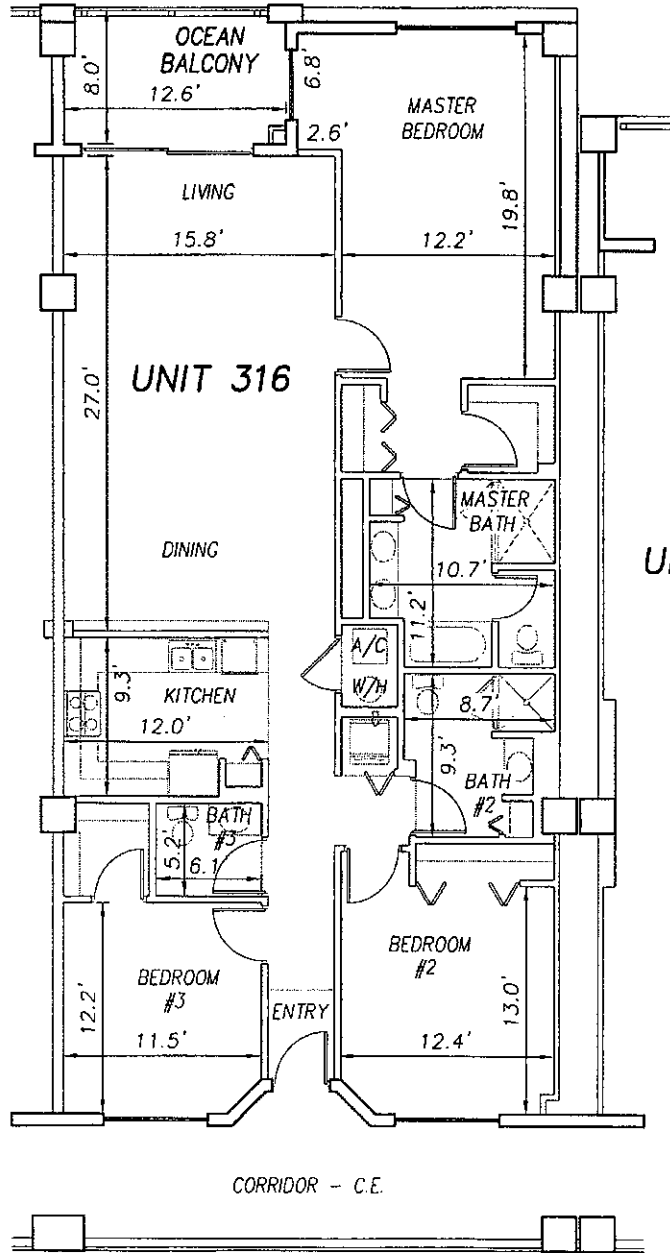
SHEET 74 OF 213 SHEETS

P:\land projects T2003\T3070PCBWI\dwg\COMDO-sh 58 - 83 3rd Fl.dwg 09/11/2003 09:36:31 AM EDT

0 10 20

OFF REC 0983 PAGE 0236 EXHIBIT 'B'

SCALE 1" = 10'



UNIT 315

UNIT 316

UNIT 317

P:\land projects T2003\T3070PCBW\dwg\COND0-sh 58 - 83 3rd Fl.dwg 09/11/2003 09:36:31 AM EDT

**SURF CLUB II  
CONDOMINIUM**

SITUATED IN MATANZAS SHORES  
FLAGLER COUNTY, FLORIDA

**THIRD FLOOR - UNIT 316 (South Wing)**



**TOMOKA ENGINEERING**

CIVIL ENGINEERING & LAND SURVEYING SINCE 1976  
DAYTONA BEACH FLAGLER/PALM COAST  
Main Office: 800 So. Ridgewood Ave., Daytona Beach, FL 32114  
Phone: 386-257-1600 Fax: 386-257-1601  
email: tomoka@tomoka-eng.com website: www.tomoka@tomoka-eng.com

DATE ISSUED: 07/23/2003

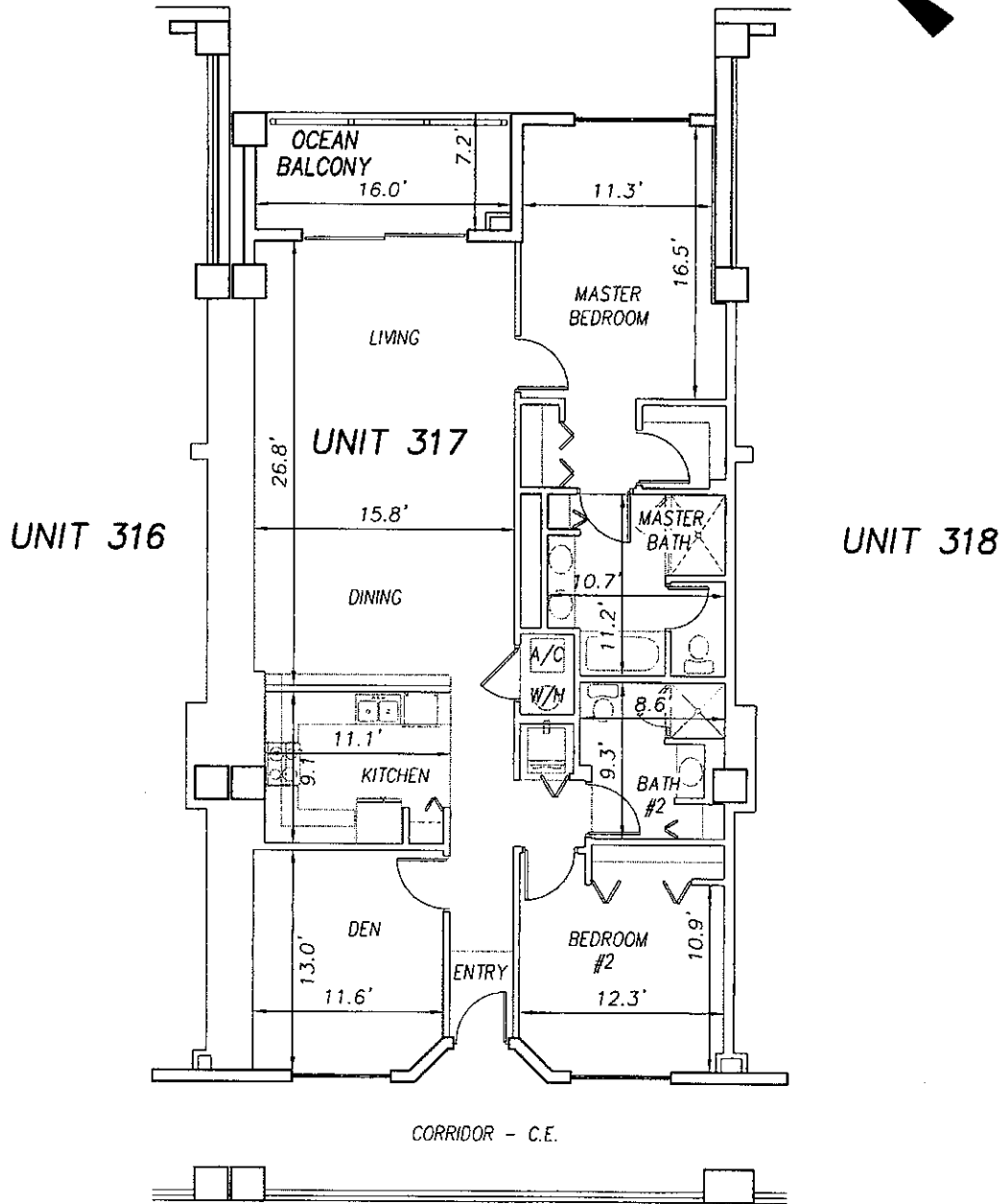
JOB # T3070PCBW1

SHEET 75 OF 213 SHEETS

0 10 20

OFF REC 0983 PAGE 0237 EXHIBIT 'B'

SCALE 1" = 10'



P:\vend projects T2003\T3070PCBWI\dwg\CONDO-sh 58 - 83 3rd Fl.dwg 09/11/2003 09:36:31 AM EDT

**SURF CLUB II  
CONDOMINIUM**

SITUATED IN MATANZAS SHORES  
FLAGLER COUNTY, FLORIDA

**THIRD FLOOR - UNIT 317 (South Wing)**



**TOMOKA ENGINEERING**

CIVIL ENGINEERING & LAND SURVEYING SINCE 1976  
DAYTONA BEACH FLAGLER/PALM COAST  
Main Office 900 So. Ridgewood Ave., Daytona Beach, FL 32114  
Phone: 386-257-1600 Fax: 386-257-1601  
email: tomoko@tomoko-eng.com website: www.tomoko@tomoko-eng.com

LB #7232

DATE ISSUED: 07/23/2003

JOB # T3070PCBWI

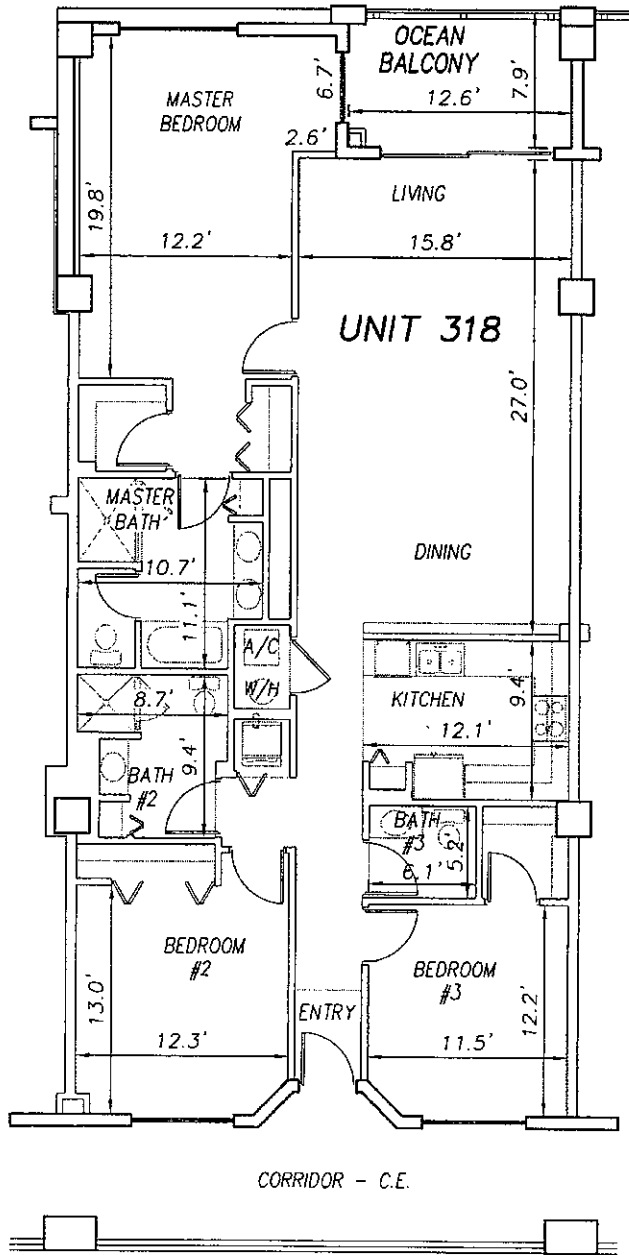
SHEET 76 OF 213 SHEETS

0 10 20

SCALE 1" = 10'

OFF REC 0983 PAGE 0238

EXHIBIT 'B'



UNIT 317

UNIT 319

**SURF CLUB II  
CONDOMINIUM**

SITUATED IN MATANZAS SHORES  
FLAGLER COUNTY, FLORIDA

**THIRD FLOOR - UNIT 318 (South Wing)**



**TOMOKA ENGINEERING**

CIVIL ENGINEERING & LAND SURVEYING SINCE 1976  
DAYTONA BEACH FLAGLER/PALM COAST  
Main Office 900 So. Ridgewood Ave., Daytona Beach, FL 32114  
Phone: 386-257-1600 Fax: 386-257-1601  
email: tomoka@tomoka-eng.com website: www.tomoka@tomoka-eng.com

DATE ISSUED: 07/23/2003

JOB # T3070PCBWI

SHEET 77 OF 213 SHEETS

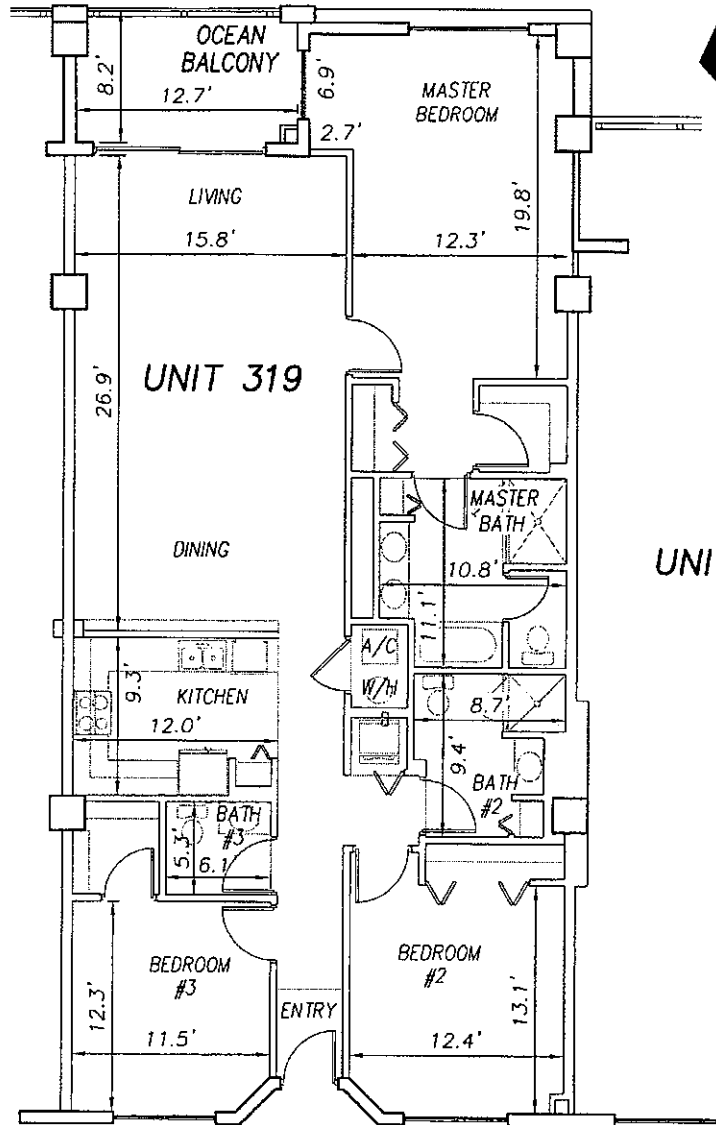
P:\land projects T2003\T3070PCBWI\dwg\CONDO-sh 58 - 83 3rd Fl.dwg 09/11/2003 09:36:31 AM EDT

0 10 20

OFF REC 0983 PAGE 0239

EXHIBIT 'B'

SCALE 1" = 10'



UNIT 318

UNIT 319

UNIT 320

CORRIDOR - C.E.

ELEVATOR #3  
L.C.E.

TELEPHONE/  
CABLE  
C.E.

**SURF CLUB II  
CONDOMINIUM**

SITUATED IN MATANZAS SHORES  
FLAGLER COUNTY, FLORIDA

**THIRD FLOOR - UNIT 319 (South Wing)**



**TOMOKA ENGINEERING**

CIVIL ENGINEERING & LAND SURVEYING SINCE 1976  
DAYTONA BEACH FLAGLER/PALM COAST  
Main Office: 900 So. Ridgewood Ave., Daytona Beach, FL 32114  
Phone: 386-257-1600 Fax: 386-257-1601  
email: tomoka@tomoka-eng.com website: www.tomoka@tomoka-eng.com

LB #2232

DATE ISSUED: 07/23/2003

JOB # T3070PCBW1

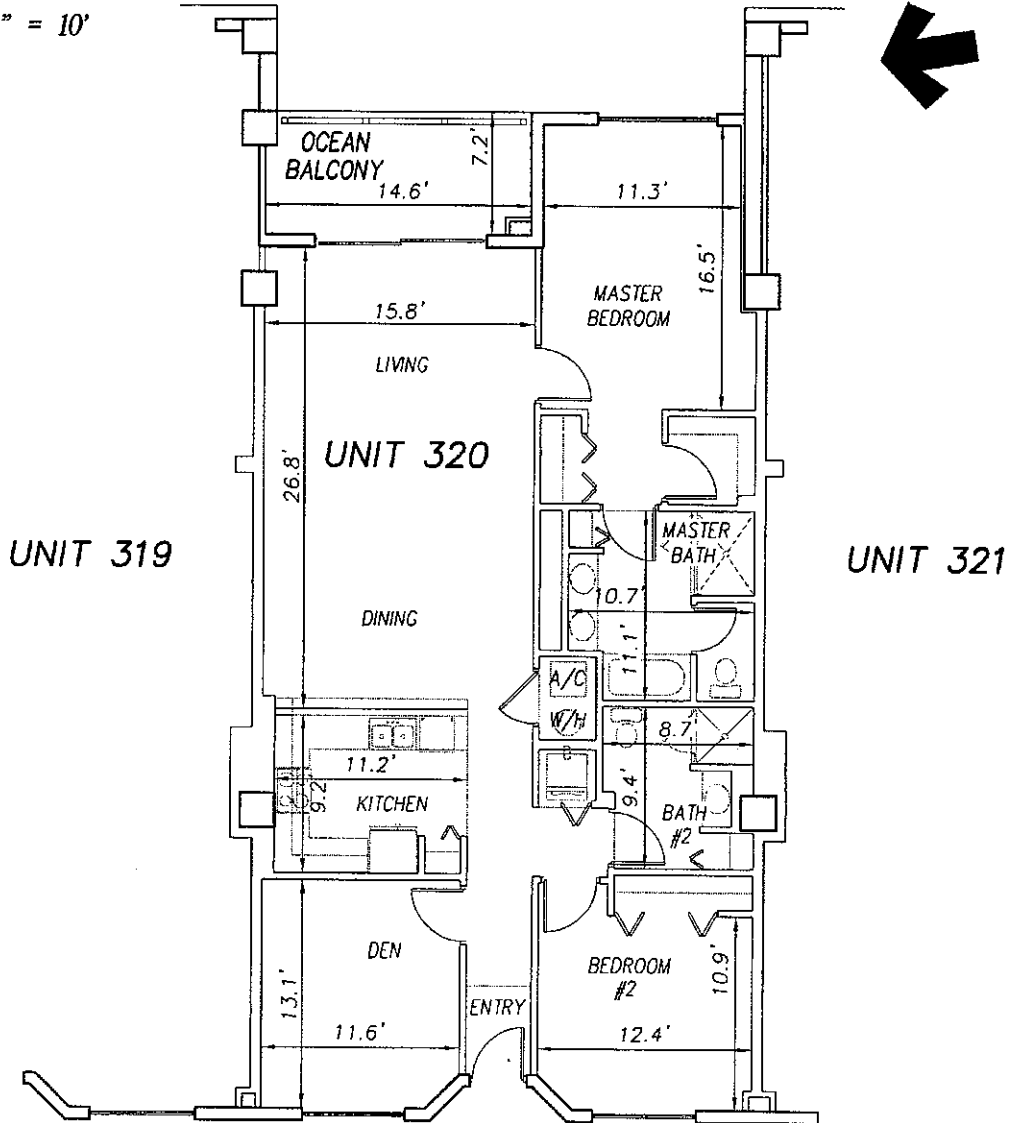
SHEET 78 OF 213 SHEETS

P:\land projects T2003\T3070PCBW1.dwg\CONDO-sh 58 - 83 3rd Fl.dwg 09/11/2003 09:36:31 AM EDT

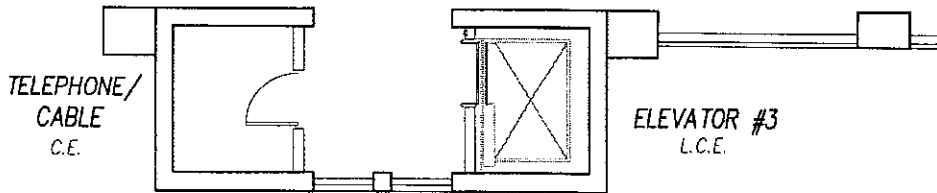
0 10 20

OFF REC 0983 PAGE 0240 EXHIBIT 'B'

SCALE 1" = 10'



CORRIDOR - C.E.



SURF CLUB II  
CONDOMINIUM

SITUATED IN MATANZAS SHORES  
FLAGLER COUNTY, FLORIDA

THIRD FLOOR - UNIT 320 (South Wing)



**TOMOKA ENGINEERING**  
 CIVIL ENGINEERING & LAND SURVEYING SINCE 1976  
 DAYTONA BEACH FLAGLER/PALM COAST  
 Main Office: 900 So. Ridgewood Ave., Daytona Beach, FL 32114  
 Phone: 386-257-1600 Fax: 386-257-1601  
 email: tomoka@tomoka-eng.com web site: www.tomoka@tomoka-eng.com

DATE ISSUED: 07/23/2003

JOB # T3070PCBW1

SHEET 79 OF 213 SHEETS

P:\land projects T2003\T3070PCBW1.dwg\CONDO-sh 58 - 83 3rd Fl.dwg 09/11/2003 09:36:31 AM EDT

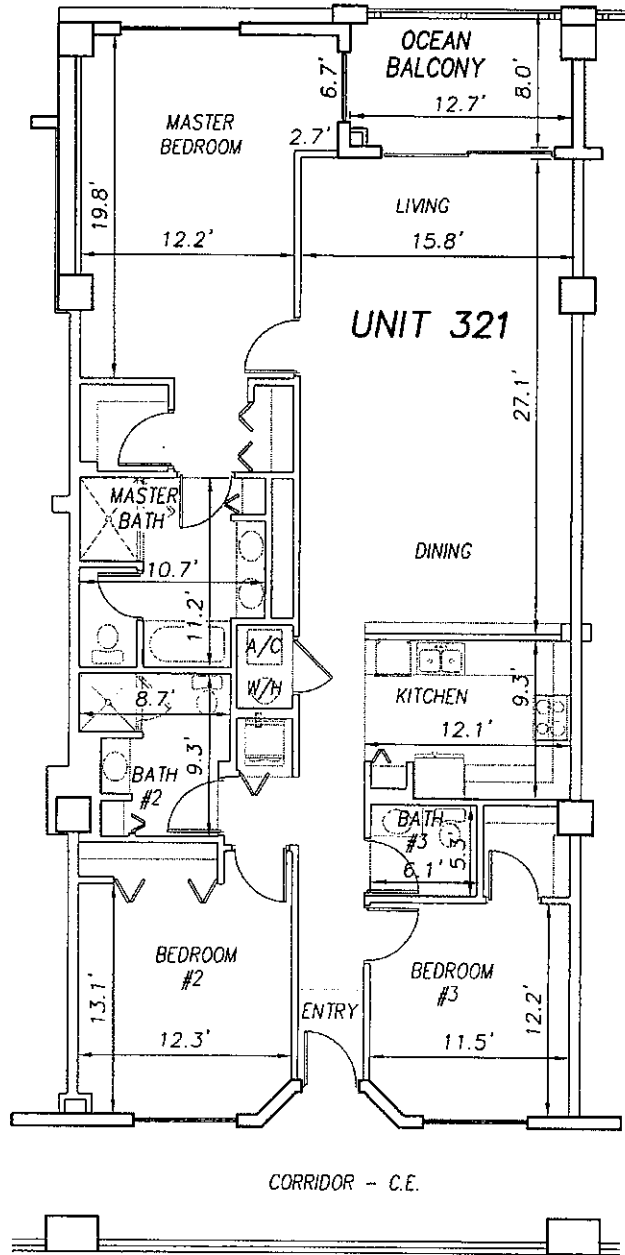
0 10 20

SCALE 1" = 10'

OFF REC 0983 PAGE 0241 EXHIBIT 'B'



UNIT 320



UNIT 322

**SURF CLUB II  
CONDOMINIUM**

SITUATED IN MATANZAS SHORES  
FLAGLER COUNTY, FLORIDA

**THIRD FLOOR - UNIT 321 (South Wing)**



**TOMOKA ENGINEERING**

CIVIL ENGINEERING & LAND SURVEYING SINCE 1976  
DAYTONA BEACH FLAGLER/PALM COAST  
Main Office: 900 So. Ridgewood Ave., Daytona Beach, FL 32114  
Phone: 386-257-1600 Fax: 386-257-1601  
email: tomoka@tomoka-eng.com website: www.tomoka@tomoka-eng.com

LS #2332

DATE ISSUED: 07/23/2003

JOB # T3070PCBW1

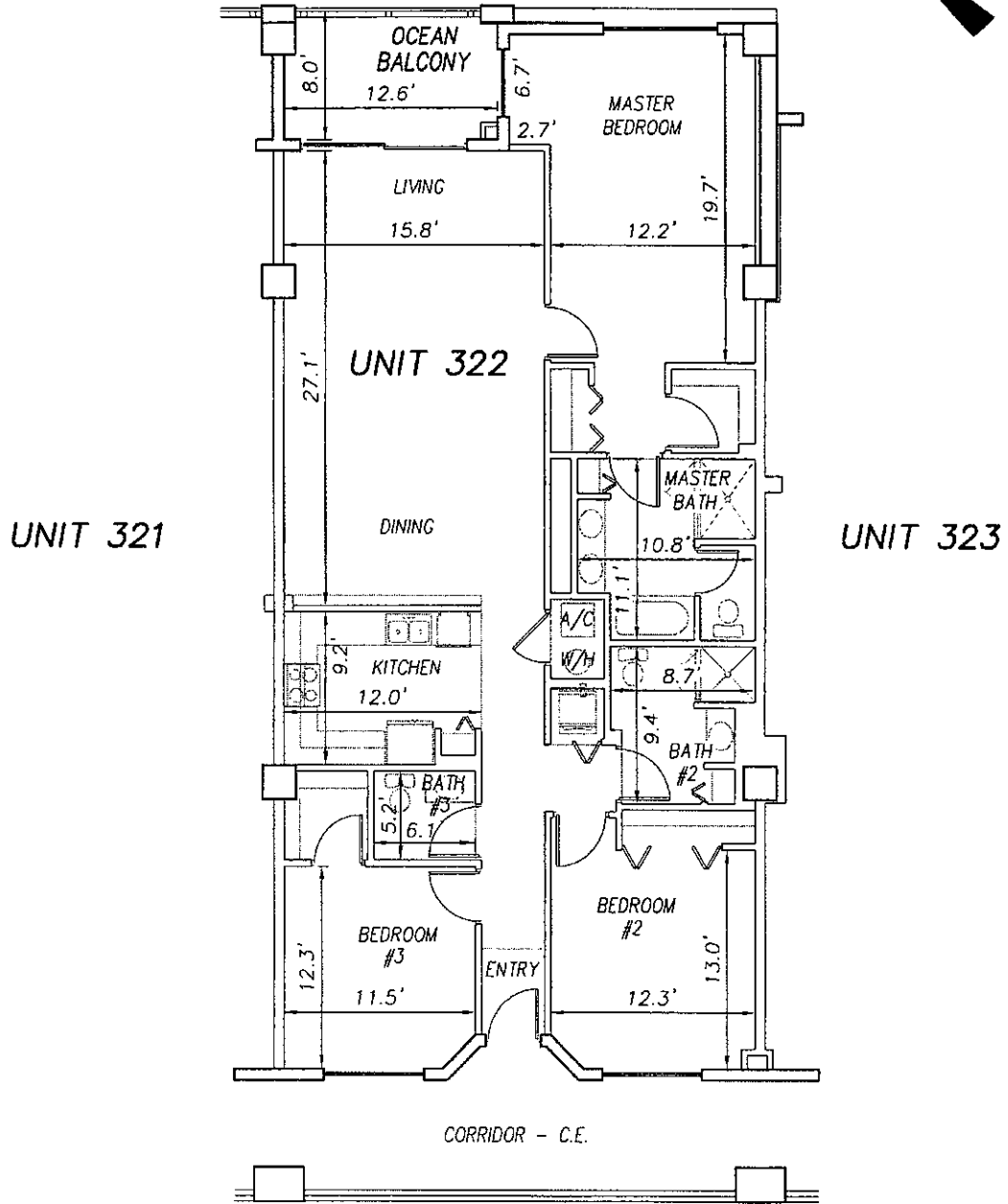
SHEET 80 OF 213 SHEETS

P:\land projects T2003\T3070PCBW1\dwg\CONDO-sh 58 - 83 3rd Fl.dwg 09/11/2003 09:36:31 AM EDT

0 10 20

OFF REC 0983 PAGE 0242 EXHIBIT 'B'

SCALE 1" = 10'



P:\land projects T2003\T3070PCBWI\dwg\CONDO--sh 5B - 83 3rd Fl.dwg 09/11/2003 09:36:31 AM EDT

**SURF CLUB II  
CONDOMINIUM**  
SITUATED IN MATANZAS SHORES  
FLAGLER COUNTY, FLORIDA  
**THIRD FLOOR - UNIT 322 (South Wing)**



**TOMOKA ENGINEERING**  
CIVIL ENGINEERING & LAND SURVEYING SINCE 1976  
DAYTONA BEACH FLAGLER/PALM COAST  
Main Office: 900 So. Ridgewood Ave., Daytona Beach, FL 32114  
Phone: 386-257-1600 Fax: 386-257-1601  
email: tomoka@tomoka-eng.com website: www.tomoka.com

DATE ISSUED: 07/23/2003

JOB # T3070PCBWI

SHEET 81 OF 213 SHEETS



0 10 20

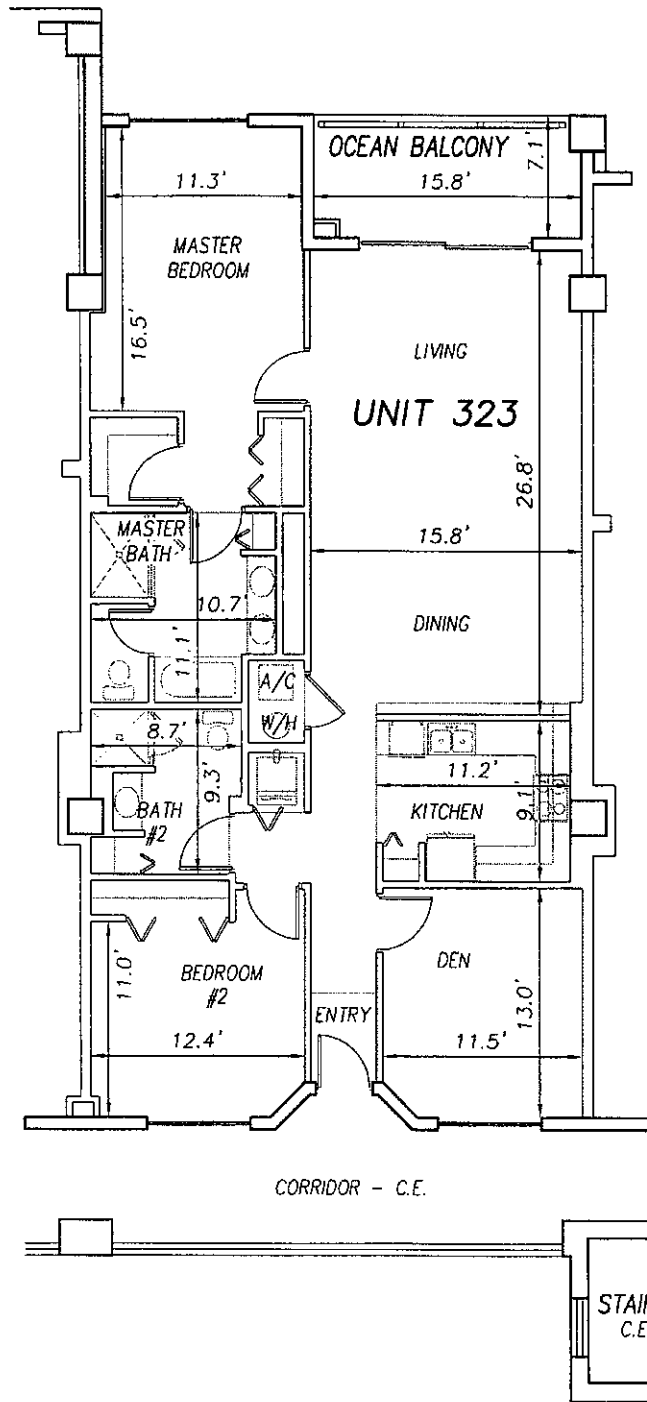
OFF REC 0983 PAGE 0243 EXHIBIT 'B'

SCALE 1" = 10'



UNIT 322

UNIT 324



P:\land projects T2003\T3070PCBWI\dwg\CONDO-sh 58 - 83 3rd Fl.dwg 09/11/2003 09:36:31 AM EDT

**SURF CLUB II  
CONDOMINIUM**  
SITUATED IN MATANZAS SHORES  
FLAGLER COUNTY, FLORIDA  
**THIRD FLOOR - UNIT 323 (South Wing)**



**TOMOKA ENGINEERING**  
CIVIL ENGINEERING & LAND SURVEYING SINCE 1976  
DAYTONA BEACH FLAGLER/PALM COAST  
Main Office: 900 So. Ridgewood Ave., Daytona Beach, FL 32114  
Phone: 386-257-1600 Fax: 386-257-1601  
email: tomoka@tomoka-eng.com website: www.tomoka@tomoka-eng.com

DATE ISSUED: 07/23/2003

JOB # T3070PCBWI

SHEET 82 OF 213 SHEETS

0 10 20

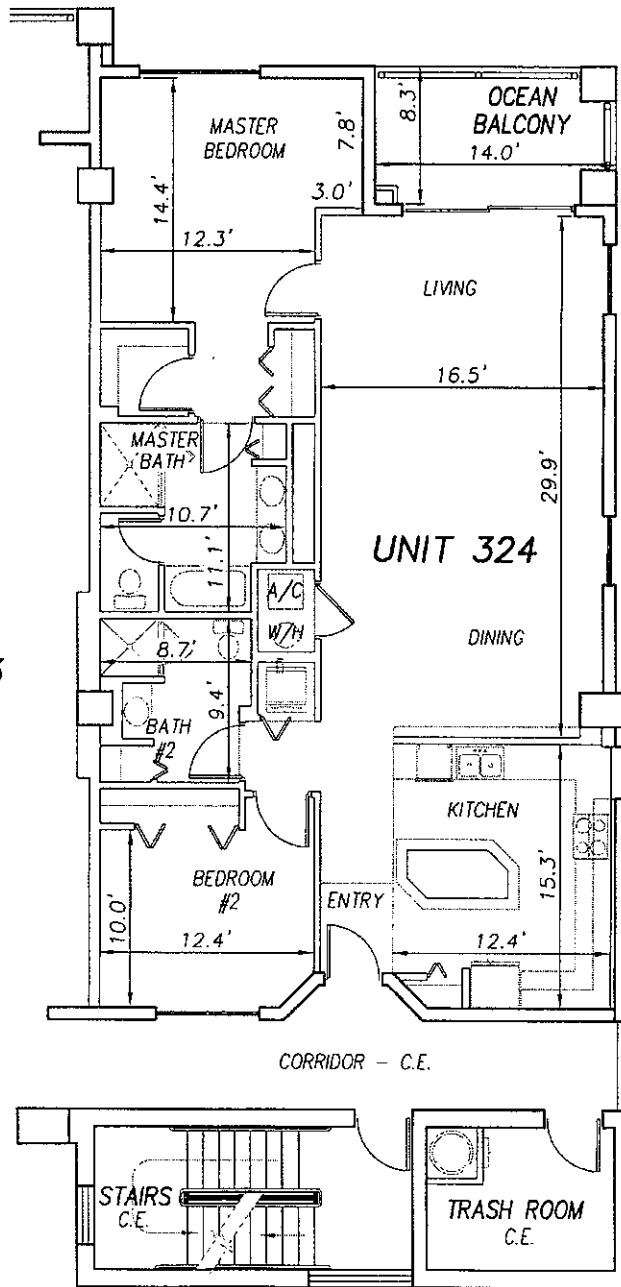
OFF REC 0983 PAGE 0244

EXHIBIT 'B'

SCALE 1" = 10'



UNIT 323



P:\land projects T2003\T3070PCBW\dwg\CONDO-sh 58 - 83 3rd Fl.dwg 09/11/2003 09:36:31 AM EDT

**SURF CLUB II**  
**CONDOMINIUM**  
 SITUATED IN MATANZAS SHORES  
 FLAGLER COUNTY, FLORIDA  
**THIRD FLOOR - UNIT 324 (South Wing)**



**TOMOKA ENGINEERING**  
 CIVIL ENGINEERING & LAND SURVEYING SINCE 1976  
 DAYTONA BEACH FLAGLER/PALM COAST  
 Main Office: 900 So. Ridgewood Ave., Daytona Beach, FL 32174  
 Phone: 386-257-1600 Fax: 386-257-1601  
 email: tomoka@tomoka-eng.com website: www.tomoka@tomoka-eng.com

DATE ISSUED: 07/23/2003

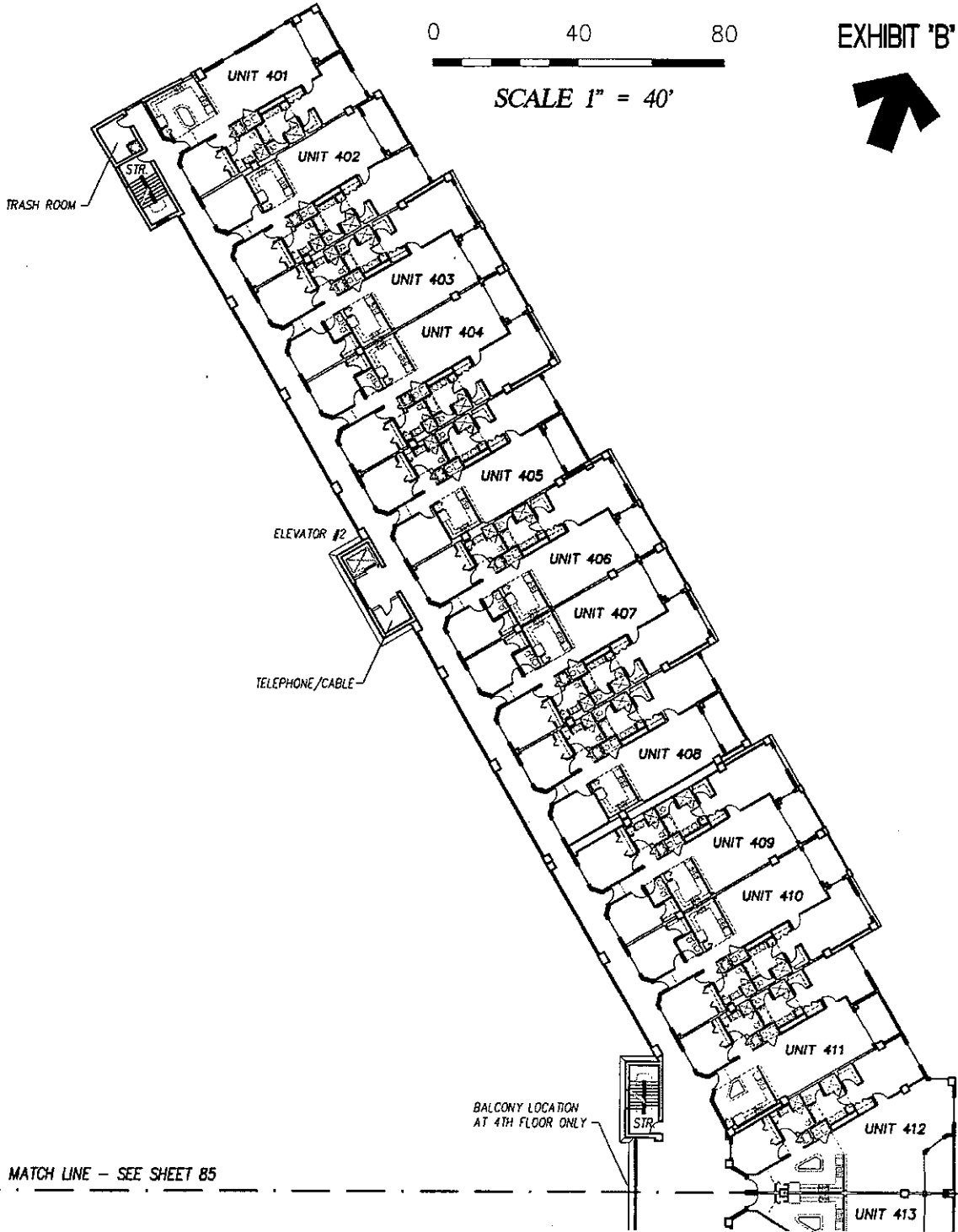
JOB # T3070PCBW1

SHEET 83 OF 213 SHEETS

EXHIBIT 'B'

0 40 80

SCALE 1" = 40'



P:\land projects T2003\T3070PCBWI\dwg\CONDO-sh 84 - 109 4th Fl.dwg 09/11/2003 09:52:31 AM EDT

**SURF CLUB II**  
**CONDOMINIUM**  
 SITUATED IN MATANZAS SHORES  
 FLAGLER COUNTY, FLORIDA  
**FOURTH FLOOR - OVERALL LAYOUT (North Wing)**



**TOMOKA ENGINEERING**  
 CIVIL ENGINEERING & LAND SURVEYING SINCE 1976  
 DAYTONA BEACH FLAGLER/PALM COAST  
 Main Office: 900 So. Ridgewood Ave., Daytona Beach, FL 32114  
 Phone: 386-257-1600 Fax: 386-257-1601  
 email: tomoka@tomoka-eng.com website: www.tomoka@tomoka-eng.com

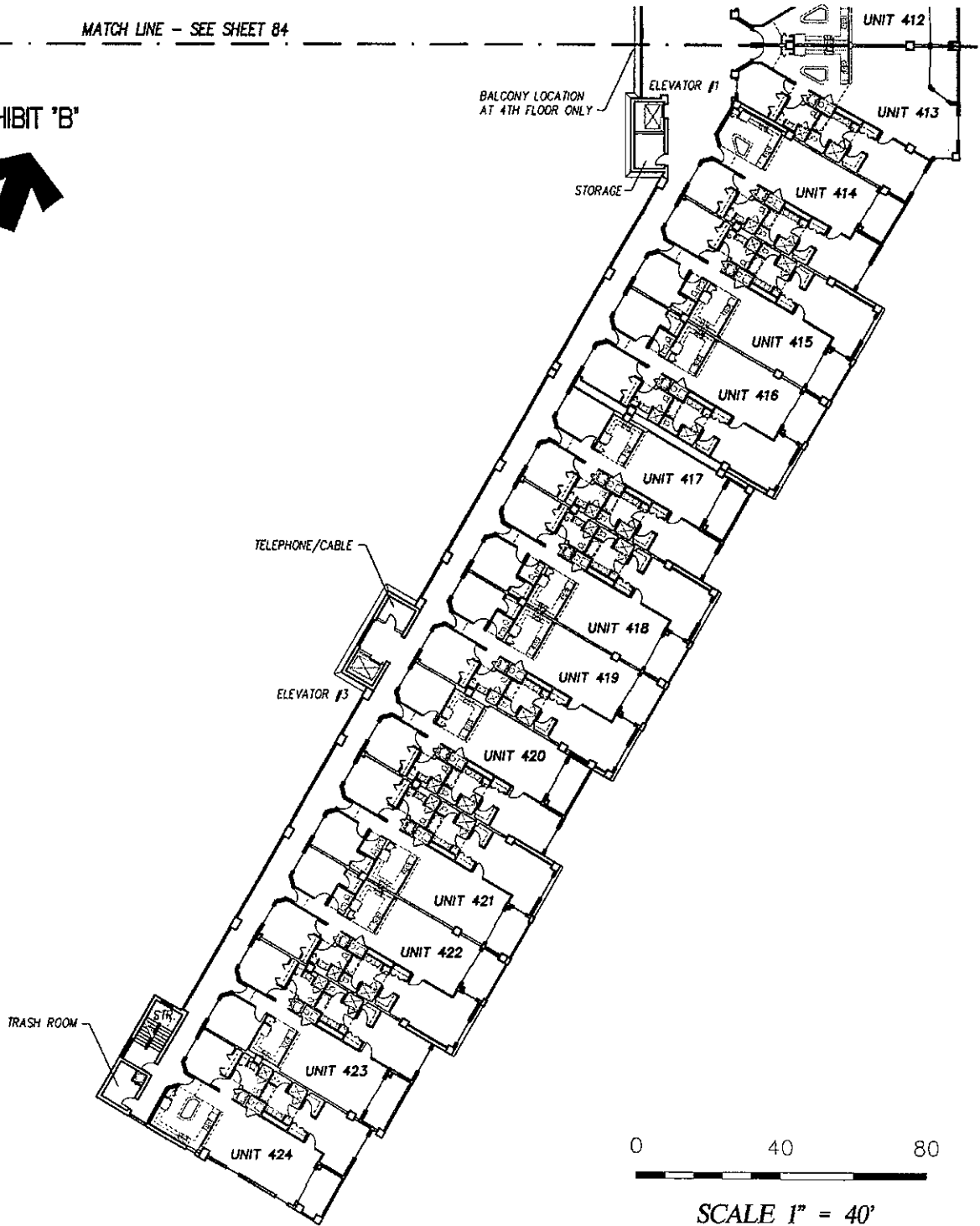
DATE ISSUED: 07/23/2003

JOB # T3070PCBWI

SHEET 84 OF 213 SHEETS

MATCH LINE - SEE SHEET 84

EXHIBIT 'B'



**SURF CLUB II  
CONDOMINIUM**

SITUATED IN MATANZAS SHORES  
FLAGLER COUNTY, FLORIDA

**FOURTH FLOOR - OVERALL LAYOUT (South Wing)**



**TOMOKA ENGINEERING**

CIVIL ENGINEERING & LAND SURVEYING SINCE 1976  
DAYTONA BEACH FLAGLER/PALM COAST

Main Office: 900 So. Ridgewood Ave., Daytona Beach, FL 32114  
Phone: 386-257-1500 Fax: 386-257-1501  
e-mail: tomoka@tomoka-eng.com web site: www.tomokafromtomoka-eng.com

DATE ISSUED: 07/23/2003

JOB # T3070PCBWI

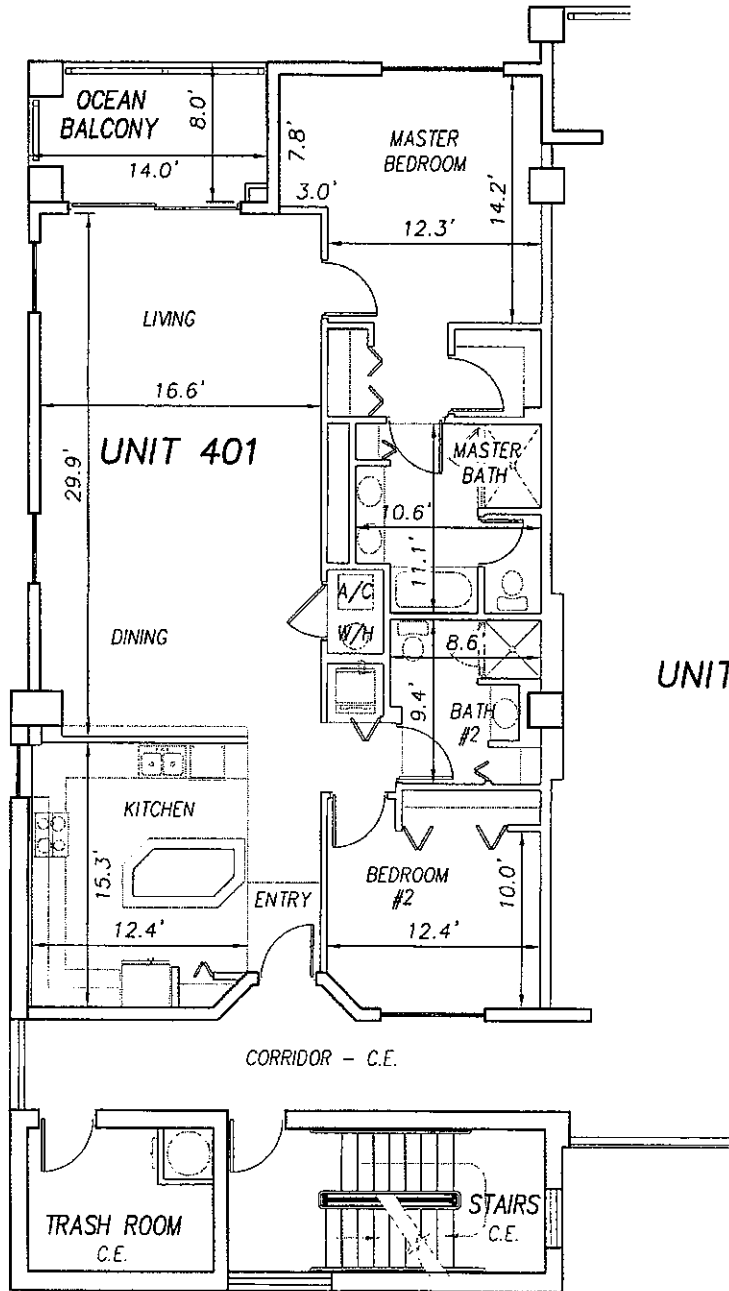
SHEET 85 OF 213 SHEETS

P:\land projects T2003\T3070PCBWI\dwg\CONDO-sh 84 - 109 4th Fl.dwg 09/11/2003 09:52:31 AM EDT

0 10 20

SCALE 1" = 10'

OFF REC 0983 PAGE 0247 EXHIBIT 'B'



UNIT 402

**SURF CLUB II  
CONDOMINIUM**

SITUATED IN MATANZAS SHORES  
FLAGLER COUNTY, FLORIDA

**FOURTH FLOOR - UNIT 401 (North Wing)**



**TOMOKA ENGINEERING**

CIVIL ENGINEERING & LAND SURVEYING SINCE 1976  
DAYTONA BEACH FLAGLER/PALM COAST  
Main Office: 900 So. Ridgewood Ave., Daytona Beach, FL 32114  
Phone: 386-257-1800 Fax: 386-257-1801  
email: tomoka@tomoka-eng.com website: www.tomoka@tomoka-eng.com

DATE ISSUED: 07/23/2003

JOB # T3070PCBWI

SHEET 86 OF 213 SHEETS

P:\cond projects T2003\T3070PCBWI\dwg\CONDO-sh 84 - 109 4th Fl.dwg 09/11/2003 09:52:31 AM EDT

0 10 20

OFF REC 0983 PAGE 0248

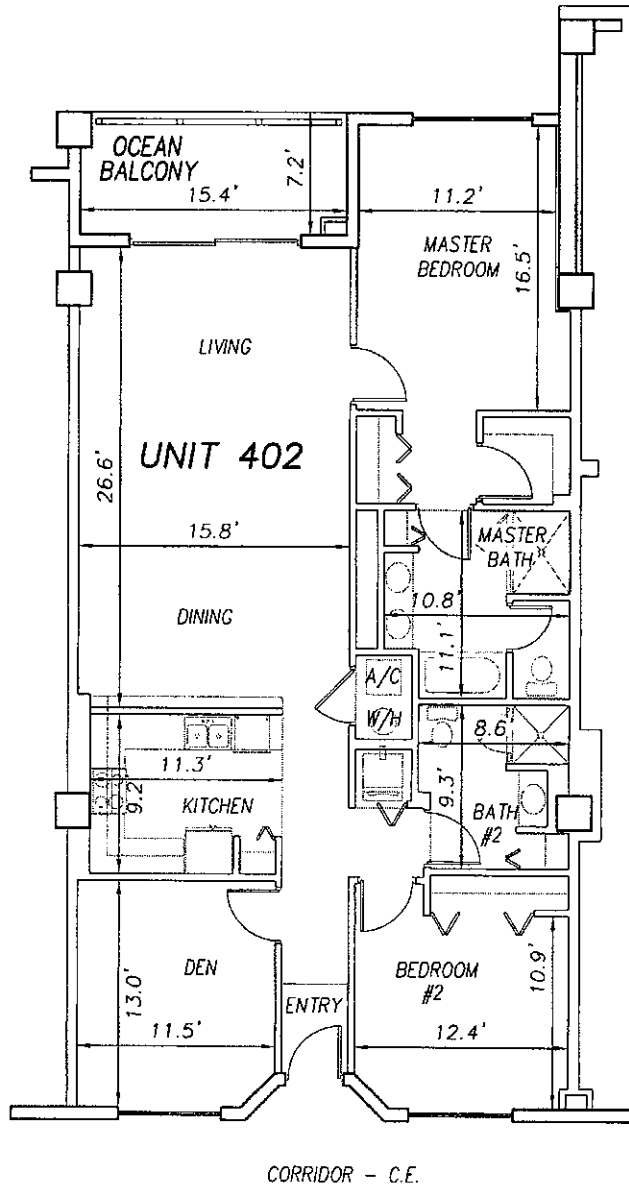
EXHIBIT 'B'

SCALE 1" = 10'

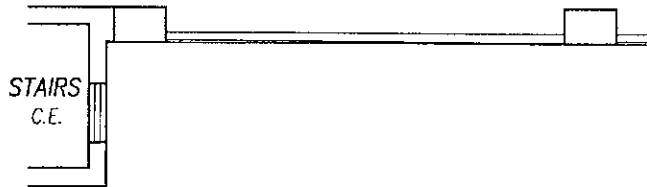


UNIT 401

UNIT 403



CORRIDOR - C.E.



**SURF CLUB II  
CONDOMINIUM**

SITUATED IN MATANZAS SHORES  
FLAGLER COUNTY, FLORIDA

**FOURTH FLOOR - UNIT 402 (North Wing)**



**TOMOKA ENGINEERING**

CIVIL ENGINEERING & LAND SURVEYING SINCE 1976  
DAYTONA BEACH FLAGLER/PALM COAST  
Main Office: 900 So. Ridgewood Ave., Daytona Beach, FL 32114  
Phone: 386-257-1600 Fax: 386-257-1601  
email: tomoka@tomoka-eng.com website: www.tomoka@tomoka-eng.com

DATE ISSUED: 07/23/2003

JOB # T3070PCBW1

SHEET 87 OF 213 SHEETS

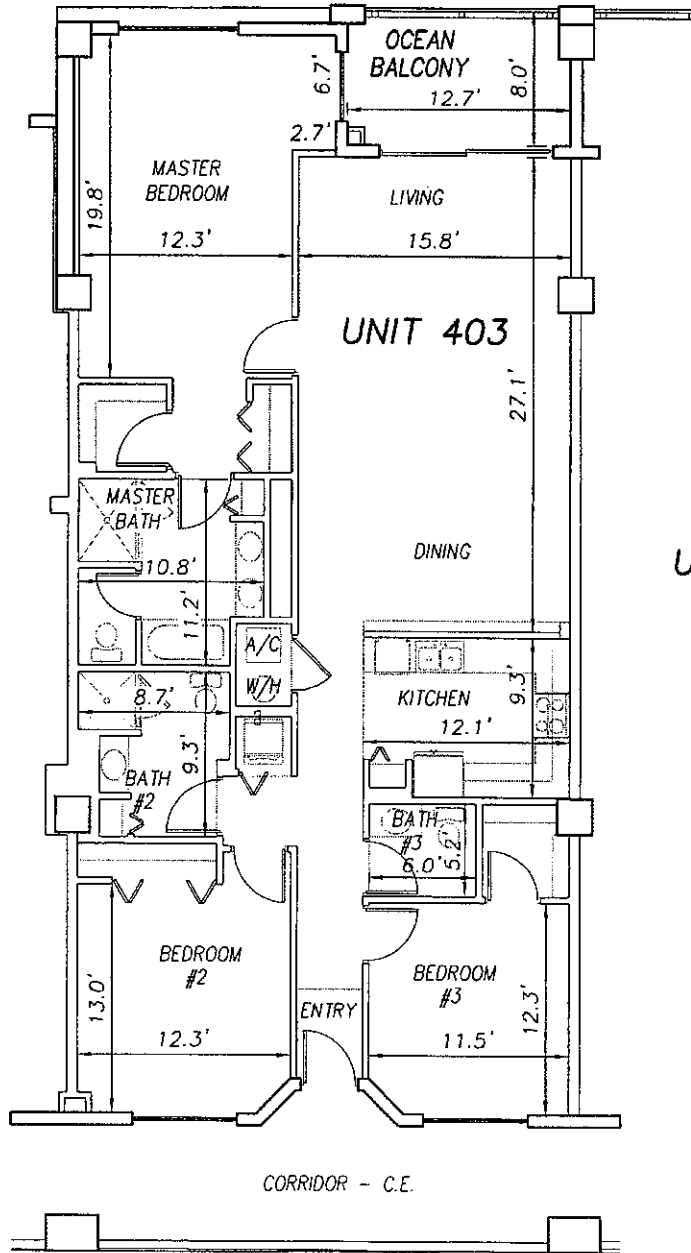
P:\land projects\T2003\T3070PCBW1.dwg\CONDO-sh 84 - 109 4th Fl.dwg 08/11/2003 09:52:31 AM EDT

0 10 20

OFF REC 0983 PAGE 0249

EXHIBIT 'B'

SCALE 1" = 10'



P:\land projects\T2003\T3070PCBW\dwg\CONDO-sh 84 - 109 4th Fl.dwg 08/11/2003 09:52:31 AM EDT

**SURF CLUB II**  
**CONDOMINIUM**  
 SITUATED IN MATANZAS SHORES  
 FLAGLER COUNTY, FLORIDA  
**FOURTH FLOOR - UNIT 403 (North Wing)**



**TOMOKA ENGINEERING**  
 CIVIL ENGINEERING & LAND SURVEYING SINCE 1976  
 DAYTONA BEACH FLAGLER/PALM COAST  
 Main Office 900 So. Ridgewood Ave., Daytona Beach, FL 32114  
 Phone: 386-257-1600 Fax: 386-257-1601  
 email: tomoka@tomoka-eng.com website: www.tomoka-engineering.com

DATE ISSUED: 07/23/2003

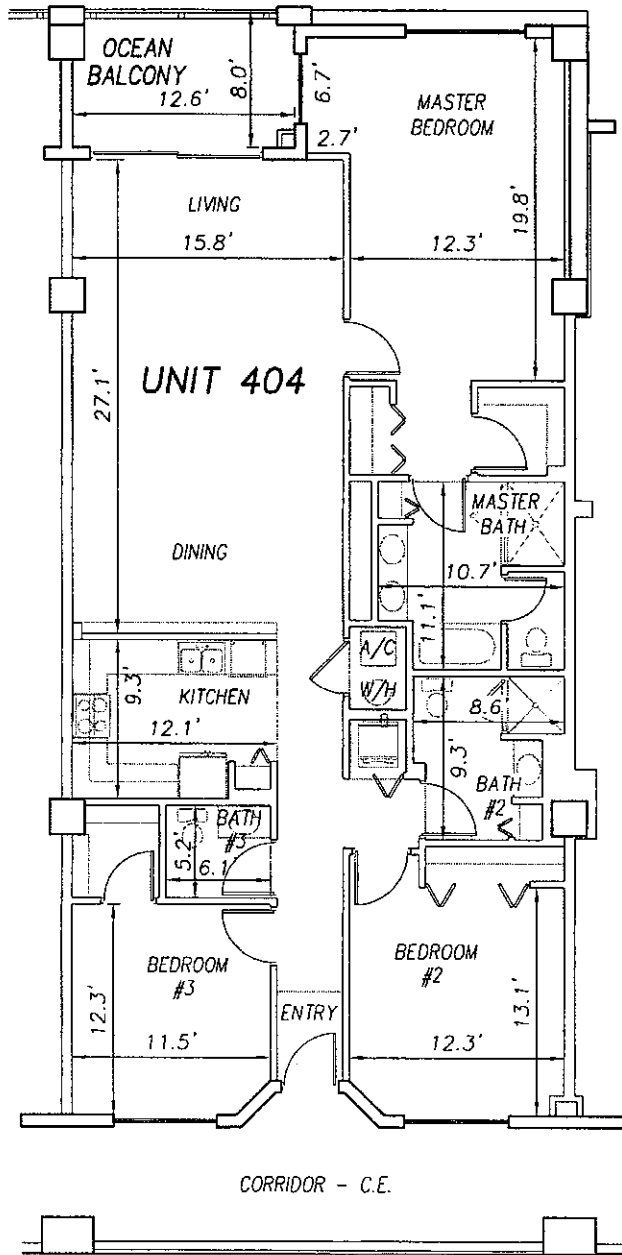
JOB # T3070PCBW1

SHEET 88 OF 213 SHEETS

0 10 20

OFF REC 0983 PAGE 0250 EXHIBIT 'B'

SCALE 1" = 10'



UNIT 403

UNIT 404

UNIT 405

**SURF CLUB II  
CONDOMINIUM**

SITUATED IN MATANZAS SHORES  
FLAGLER COUNTY, FLORIDA

**FOURTH FLOOR - UNIT 404 (North Wing)**



**TOMOKA ENGINEERING**

CIVIL ENGINEERING & LAND SURVEYING SINCE 1976  
DAYTONA BEACH FLAGLER/PALM COAST  
Main Office: 300 So. Ridgewood Ave., Daytona Beach, FL 32114  
Phone: 386-257-1600 Fax: 386-257-1601  
email: tomoka@tomoka-eng.com website: www.tomoka@tomoka-eng.com

DATE ISSUED: 07/23/2003

JOB # T3070PCBW1

SHEET 89 OF 213 SHEETS

P:\cond projects T2003\T3070PCBW1\dwg\CONDO-sh 84 - 109 4th Fl.dwg 09/11/2003 09:52:31 AM EDT



0 10 20

SCALE 1" = 10'

OFF REC 0983 PAGE 0251

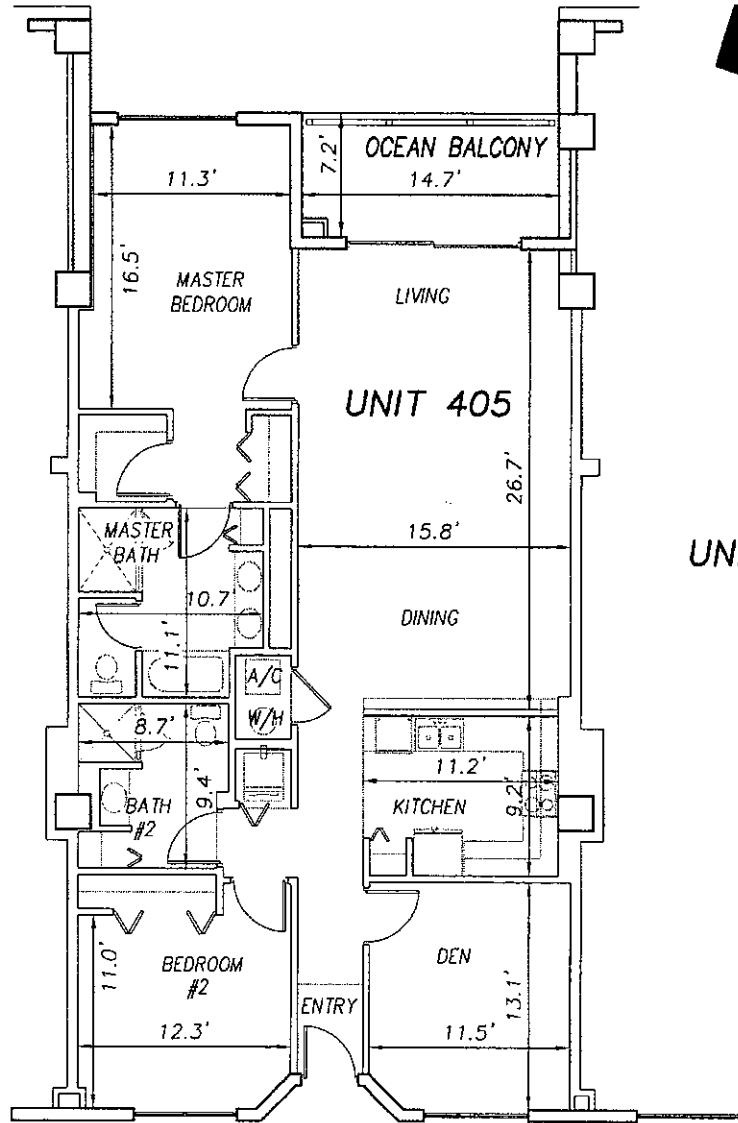
EXHIBIT 'B'



UNIT 404

UNIT 405

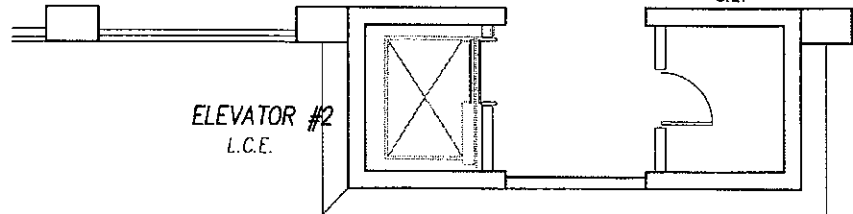
UNIT 406



CORRIDOR - C.E.

TELEPHONE/CABLE C.E.

ELEVATOR #2 L.C.E.



**SURF CLUB II  
CONDOMINIUM**

SITUATED IN MATANZAS SHORES  
FLAGLER COUNTY, FLORIDA

**FOURTH FLOOR - UNIT 405 (North Wing)**



**TOMOKA ENGINEERING**

CIVIL ENGINEERING & LAND SURVEYING SINCE 1976  
DAYTONA BEACH FLAGLER/PALM COAST  
Main Office: 900 So. Ridgewood Ave., Daytona Beach, FL 32114  
Phone: 386-257-1800 Fax: 386-257-1801  
email: tomoka@tomoka-eng.com web: www.tomoka@tomoka-eng.com

DATE ISSUED: 07/23/2003

JOB # T3070PCBWI

SHEET 90 OF 213 SHEETS

P:\vend projects T2003\T3070PCBWI\dwg\CONDO--sh 84 - 109 4th Fl.dwg 09/11/2003 09:52:31 AM EDT

0 10 20

SCALE 1" = 10'

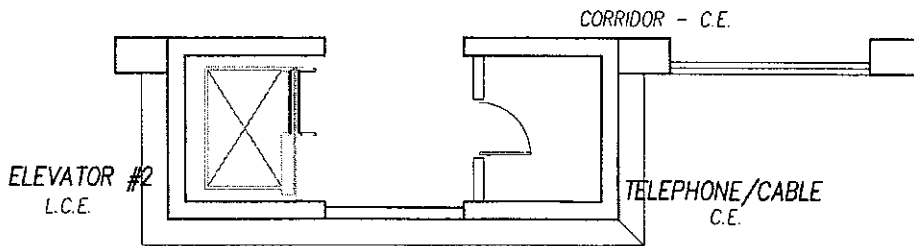
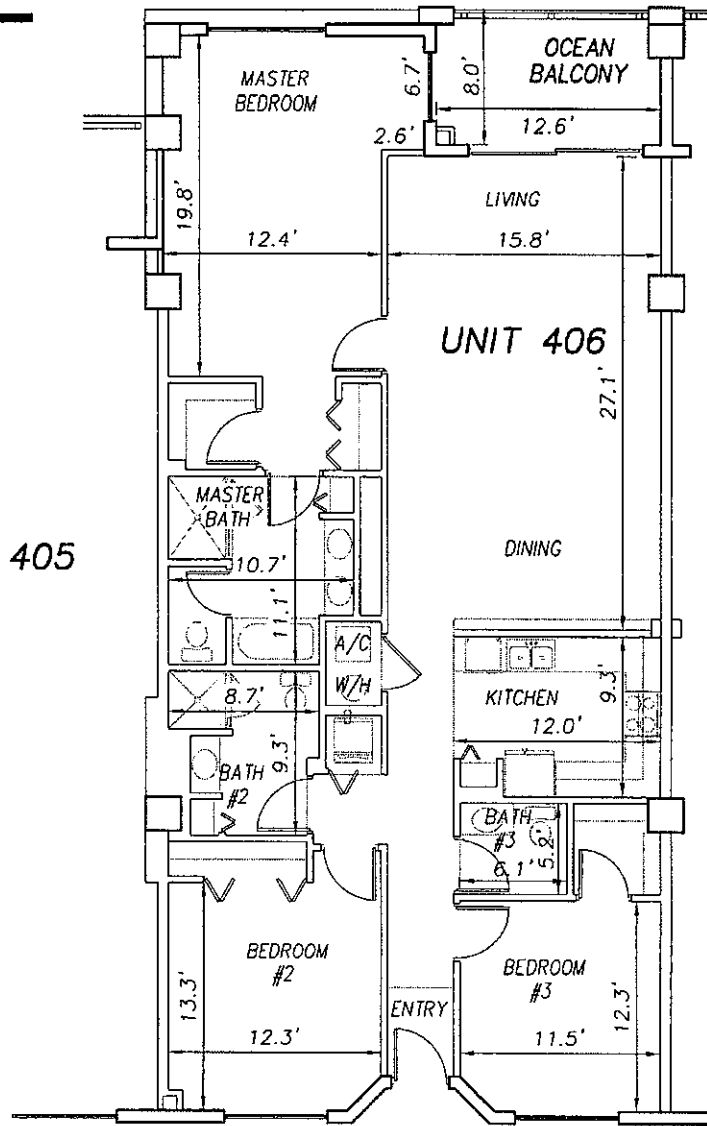
EXHIBIT 'B'



UNIT 405

UNIT 406

UNIT 407



**SURF CLUB II  
CONDOMINIUM**  
SITUATED IN MATANZAS SHORES  
FLAGLER COUNTY, FLORIDA  
**FOURTH FLOOR - UNIT 406 (North Wing)**



**TOMOKA ENGINEERING**  
CIVIL ENGINEERING & LAND SURVEYING SINCE 1976  
DAYTONA BEACH FLAGLER/PALM COAST  
Main Office: 900 So. Ridgewood Ave., Daytona Beach, FL 32114  
Phone: 386-257-1600 Fax: 386-257-1601  
email: tomoka@tomoka-eng.com website: www.tomoka@tomoka-eng.com

DATE ISSUED: 07/23/2003

JOB # T3070PCBWI

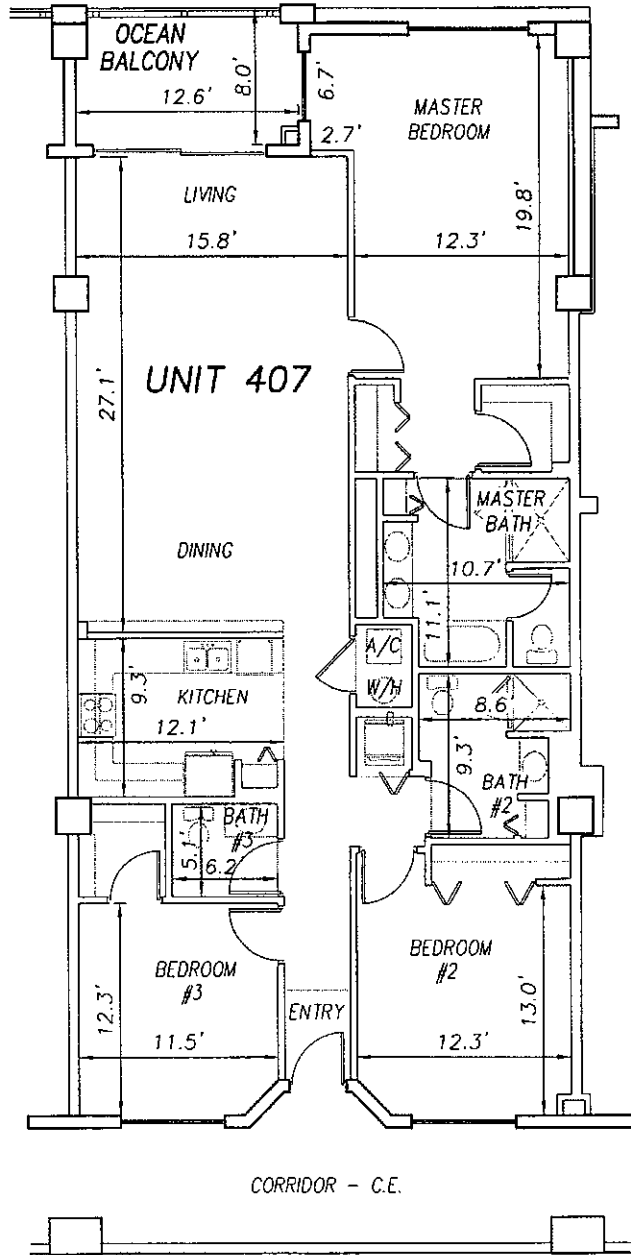
SHEET 91 OF 213 SHEETS

P:\cond projects T2003\T3070PCBWI\dwg\CONDO-sh 84 - 109 4th Fl.dwg 09/11/2003 09:52:31 AM EDT

0 10 20

OFF REC 0983 PAGE 0253 EXHIBIT 'B'

SCALE 1" = 10'



UNIT 406

UNIT 408

CORRIDOR - C.E.

**SURF CLUB II  
CONDOMINIUM**

SITUATED IN MATANZAS SHORES  
FLAGLER COUNTY, FLORIDA

**FOURTH FLOOR - UNIT 407 (North Wing)**



**TOMOKA ENGINEERING**

CIVIL ENGINEERING & LAND SURVEYING SINCE 1976  
DAYTONA BEACH FLAGLER/PALM COAST  
Main Office: 900 So. Ridgewood Ave., Daytona Beach, FL 32114  
Phone: 386-257-1600 Fax: 386-257-1601  
email: tomoka@tomoka-eng.com website: www.tomoka.com

DATE ISSUED: 07/23/2003

JOB # T3070PCBWI

SHEET 92 OF 213 SHEETS

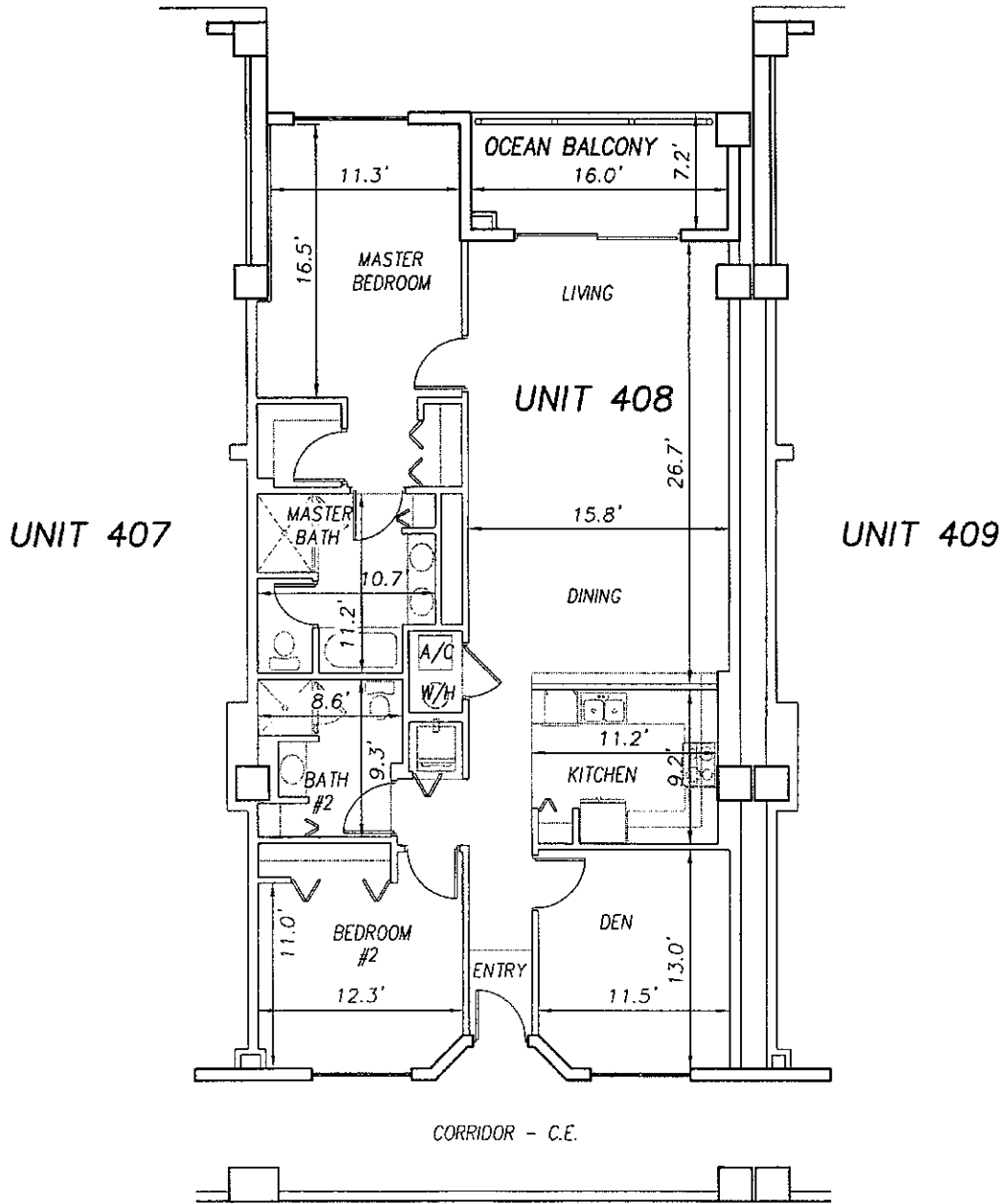
P:\cond\_projects\T3070PCBWI\dwg\CONDO-sh B4 - 109 4th Fl.dwg 09/11/2003 09:52:31 AM EDT

0 10 20

OFF REC 0983 PAGE 0254

EXHIBIT 'B'

SCALE 1" = 10'



P:\land projects T2003\T3070PCBW\dwg\COND0-sh 84 - 109 4th Fl.dwg 09/11/2003 09:52:31 AM EDT

**SURF CLUB II  
CONDOMINIUM**

SITUATED IN MATANZAS SHORES  
FLAGLER COUNTY, FLORIDA

**FOURTH FLOOR - UNIT 408 (North Wing)**



LB #2232

**TOMOKA ENGINEERING**

CIVIL ENGINEERING & LAND SURVEYING SINCE 1976  
DAYTONA BEACH FLAGLER/PALM COAST  
Main Office: 900 So. Ridgewood Ave., Daytona Beach, FL 32114  
Phone: 386-257-1600 Fax: 386-257-1601  
email: tomoka@tomoka-eng.com website: www.tomoka@tomoka-eng.com

DATE ISSUED: 07/23/2003

JOB # T3070PCBWI

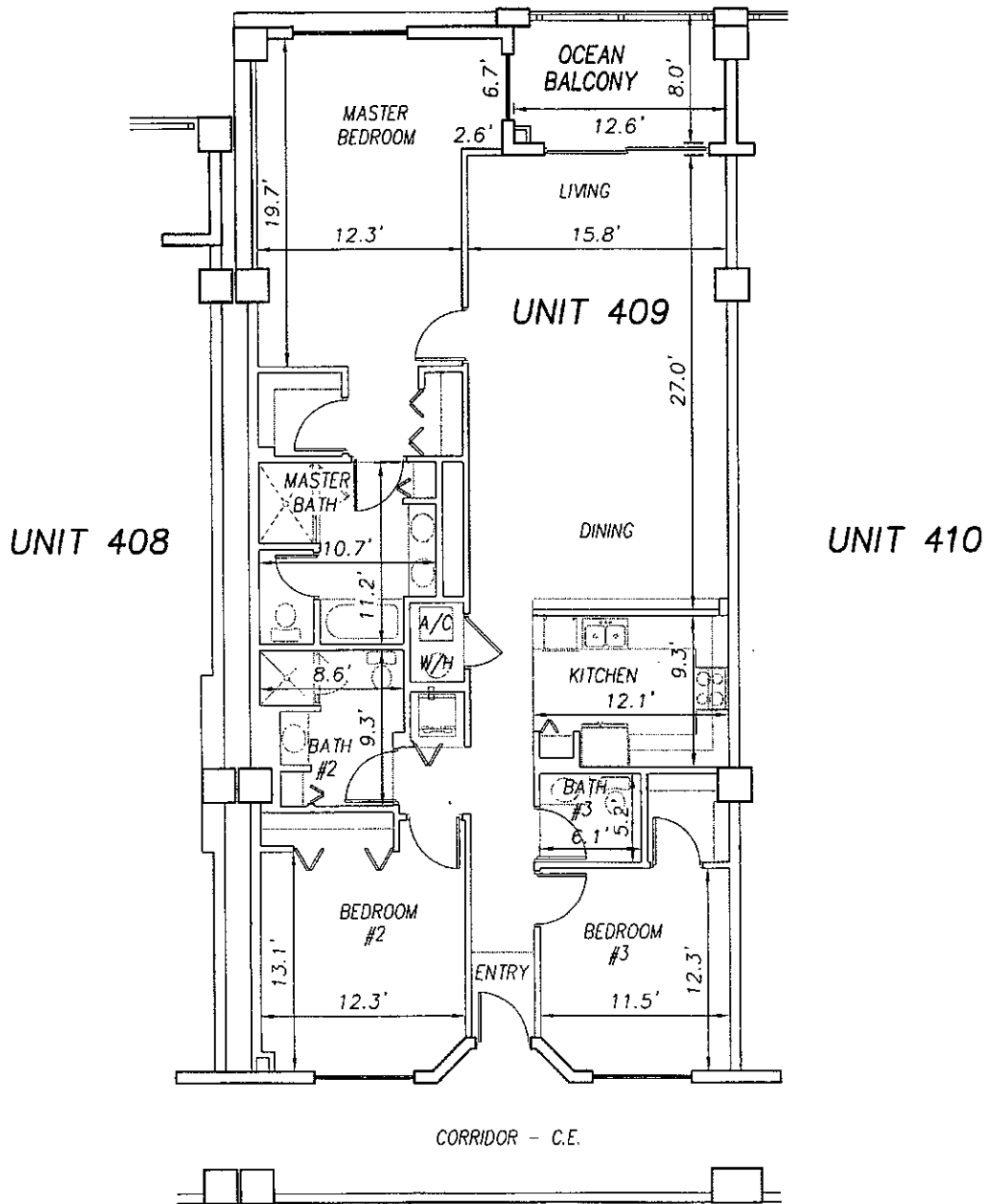
SHEET 93 OF 213 SHEETS

0 10 20

SCALE 1" = 10'

OFF REC 0983 PAGE 0255

EXHIBIT 'B'



P:\land projects T2003\T3070PCBWI\dwg\CONDO-sh 84 - 109 4th Fl.dwg 09/11/2003 09:52:31 AM EDT

**SURF CLUB II  
CONDOMINIUM**

SITUATED IN MATANZAS SHORES  
FLAGLER COUNTY, FLORIDA

**FOURTH FLOOR - UNIT 409 (North Wing)**



**TOMOKA ENGINEERING**

CIVIL ENGINEERING & LAND SURVEYING SINCE 1976  
DAYTONA BEACH FLAGLER/PALM COAST  
Main Office: 900 So. Ridgewood Ave., Daytona Beach, FL 32114  
Phone: 386-257-1600 Fax: 386-257-1601  
email: tomoka@tomoka-eng.com website: www.tomoka@tomoka-eng.com

DATE ISSUED: 07/23/2003

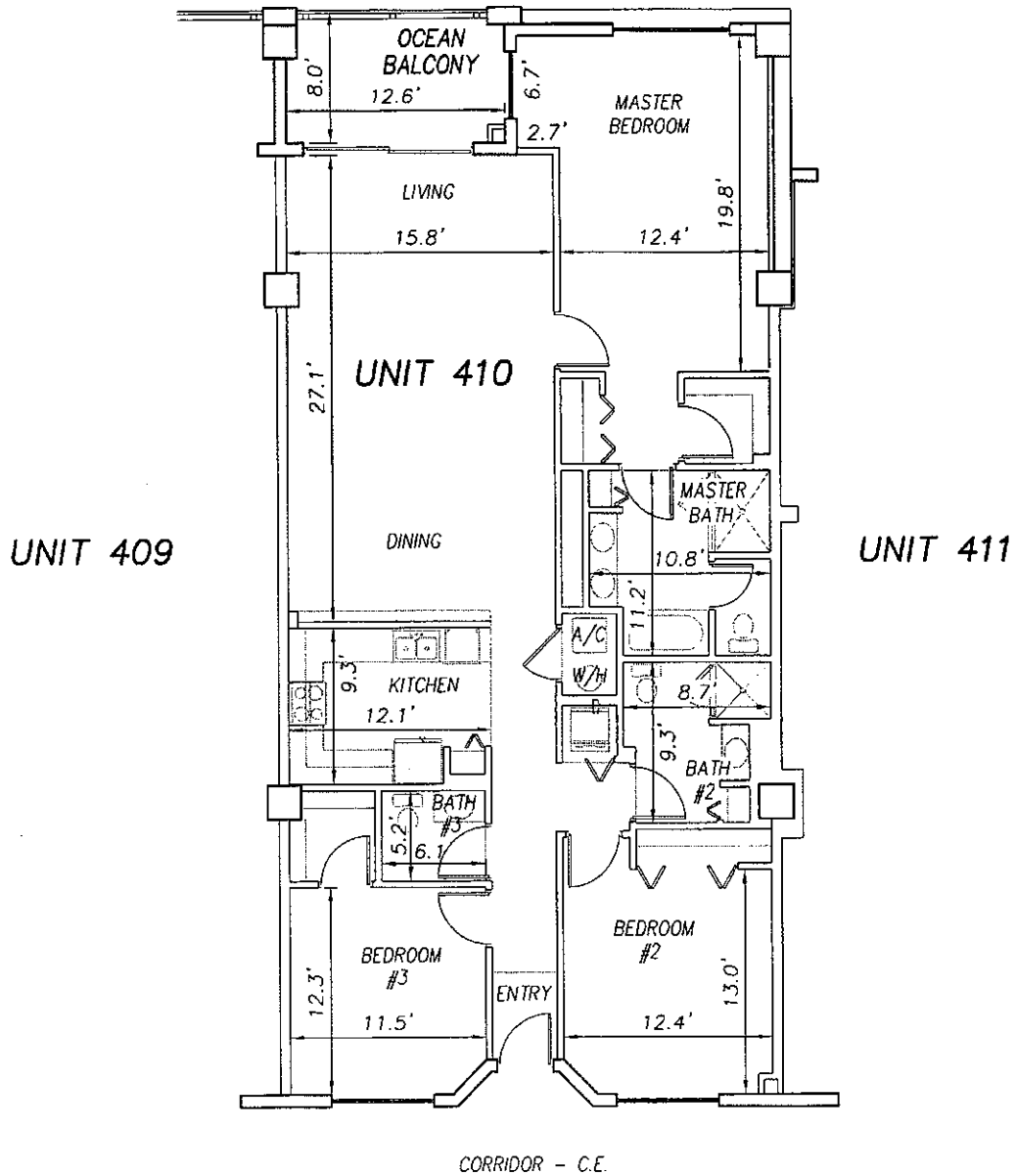
JOB # T3070PCBWI

SHEET 94 OF 213 SHEETS

0 10 20

SCALE 1" = 10'

OFF REC 0983 PAGE 0256 EXHIBIT 'B'



P:\cond projects T2003\T3070PCBWI\dwg\CONDO-sh 84 - 109 4th Fl.dwg 09/11/2003 09:52:31 AM EDT

**SURF CLUB II  
CONDOMINIUM**  
SITUATED IN MATANZAS SHORES  
FLAGLER COUNTY, FLORIDA  
**FOURTH FLOOR - UNIT 410 (North Wing)**



**TOMOKA ENGINEERING**  
CIVIL ENGINEERING & LAND SURVEYING SINCE 1976  
DAYTONA BEACH FLAGLER/PALM COAST  
Main Office: 900 So. Ridgewood Ave., Daytona Beach, FL 32114  
Phone: 386-257-1600 Fax: 386-257-1601  
email: tomoka@tomoka-eng.com website: www.tomoka@tomoka-eng.com

DATE ISSUED: 07/23/2003

JOB # T3070PCBWI

SHEET 95 OF 213 SHEETS

0 10 20

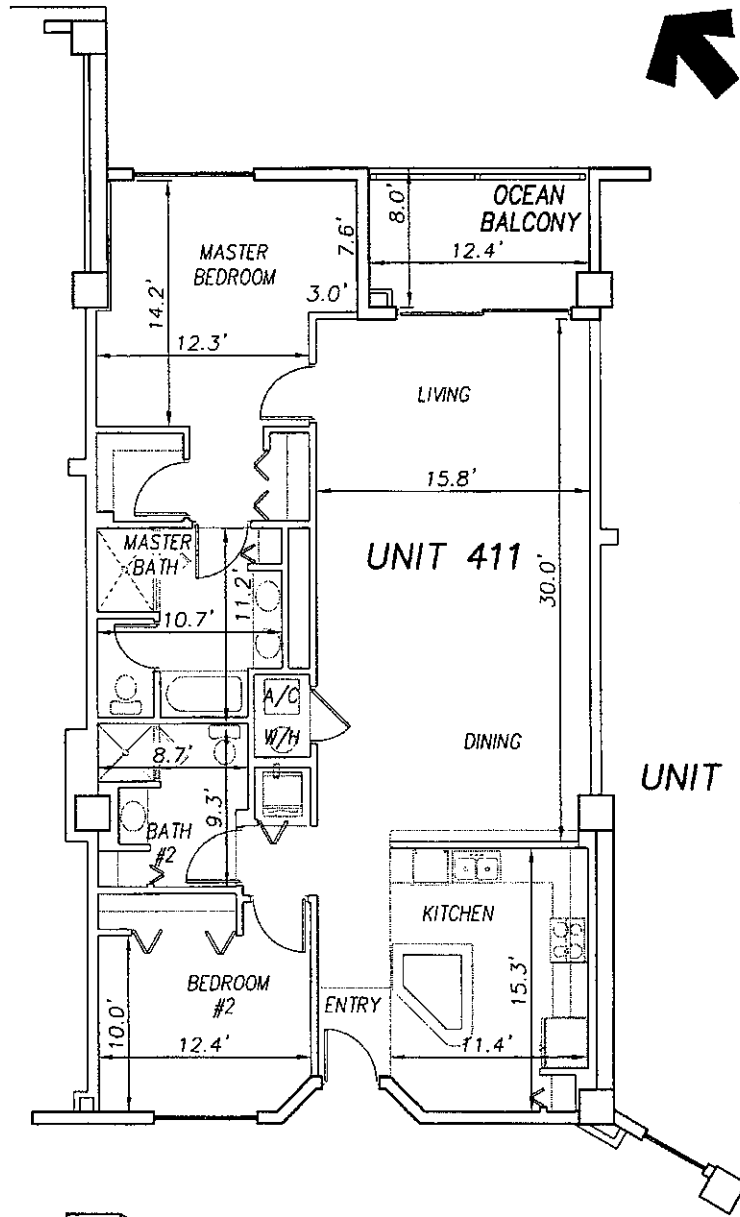
OFF REC 0983 PAGE 0257 EXHIBIT 'B'

SCALE 1" = 10'



UNIT 410

UNIT 412



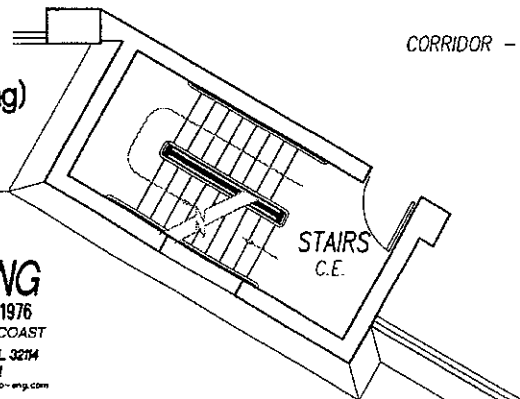
CORRIDOR - C.E.

**SURF CLUB II  
CONDOMINIUM**

SITUATED IN MATANZAS SHORES  
FLAGLER COUNTY, FLORIDA

**FOURTH FLOOR - UNIT 411 (North Wing)**

BALCONY LOCATION  
AT 4TH FLOOR ONLY



**TOMOKA ENGINEERING**  
 CIVIL ENGINEERING & LAND SURVEYING SINCE 1976  
 DAYTONA BEACH FLAGLER/PALM COAST  
 Main Office: 900 So. Ridgewood Ave., Daytona Beach, FL 32114  
 Phone: 386-257-1600 Fax: 386-257-1601  
 email: tomoko@tomoko-eng.com website: www.tomoko@tomoko-eng.com

DATE ISSUED: 07/23/2003

JOB # T3070PCBWI

SHEET 96 OF 213 SHEETS

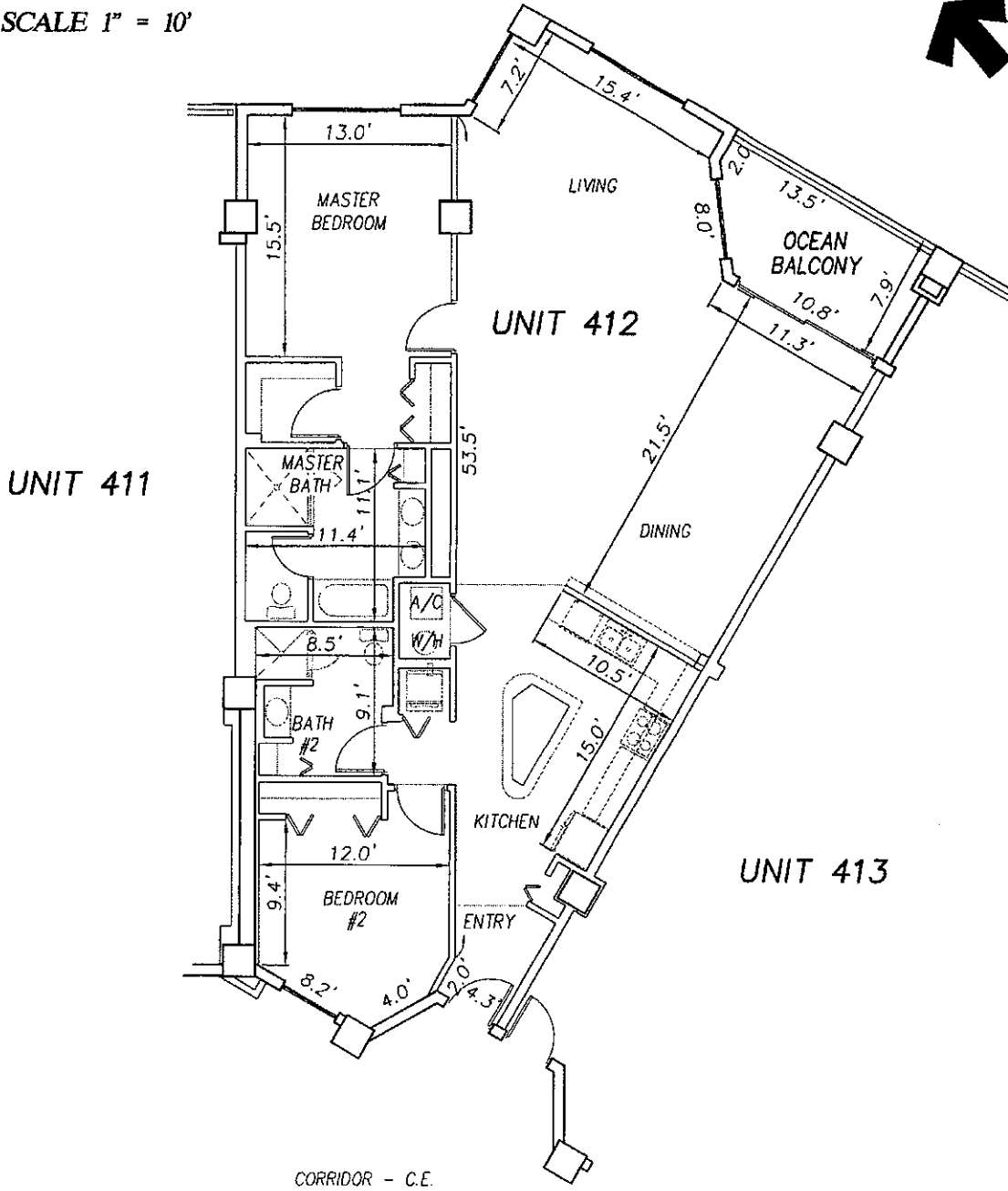
P:\land projects T2003\T3070PCBWI\dwg\CONDO-sh 84 - 109 4th Fl.dwg 09/11/2003 09:52:31 AM EDT

0 10 20

SCALE 1" = 10'

OFF REC 0983 PAGE 0258

EXHIBIT 'B'



P:\land projects T2003\T3070PCBW\dwg\CONDO-sh 84 - 109 4th Fl.dwg 09/11/2003 09:52:31 AM EDT

**SURF CLUB II  
CONDOMINIUM**

SITUATED IN MATANZAS SHORES  
FLAGLER COUNTY, FLORIDA

**FOURTH FLOOR - UNIT 412 (North Wing)**



**TOMOKA ENGINEERING**

CIVIL ENGINEERING & LAND SURVEYING SINCE 1976  
DAYTONA BEACH FLAGLER/PALM COAST  
Main Office: 900 So. Ridgewood Ave., Daytona Beach, FL 32114  
Phone: 386-257-1600 Fax: 386-257-1801  
email: tomoka@tomoka-eng.com website: www.tomoka@tomoka-eng.com

DATE ISSUED: 07/23/2003

JOB # T3070PCBW1

SHEET 97 OF 213 SHEETS

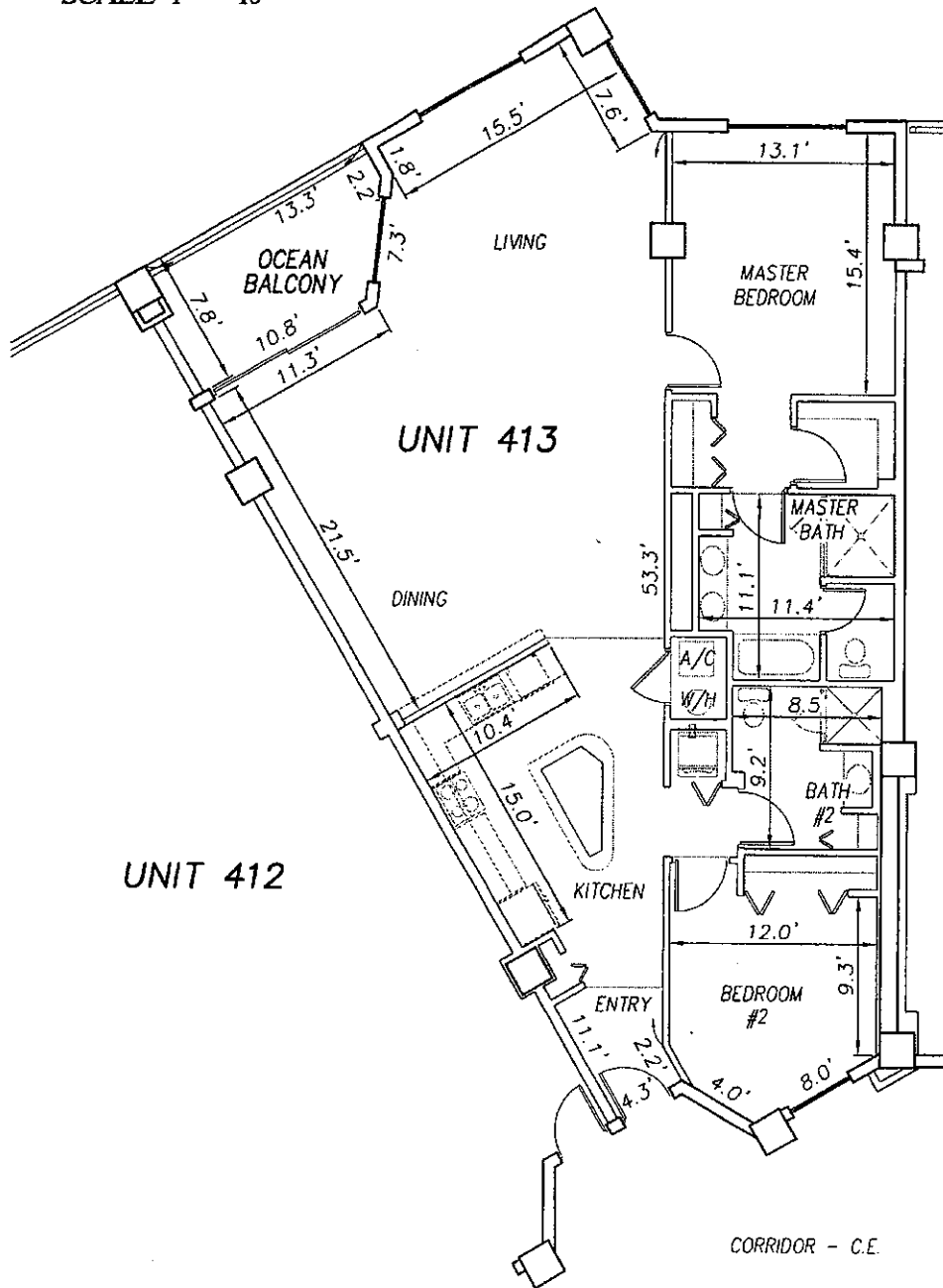


0 10 20

SCALE 1" = 10'

OFF REC 0983 PAGE 0259

EXHIBIT 'B'



P:\lend projects\T2003\T3070PCBW1\dwg\CONDO-sh 84 - 109 4th Fl.dwg 09/11/2003 09:52:31 AM EDT

**SURF CLUB II**  
**CONDOMINIUM**  
 SITUATED IN MATANZAS SHORES  
 FLAGLER COUNTY, FLORIDA  
**FOURTH FLOOR - UNIT 413 (South Wing)**



**TOMOKA ENGINEERING**  
 CIVIL ENGINEERING & LAND SURVEYING SINCE 1976  
 DAYTONA BEACH FLAGLER/PALM COAST  
 Main Office: 900 So. Ridgewood Ave., Daytona Beach, FL 32114  
 Phone: 386-257-1600 Fax: 386-257-1601  
 email: tomoka@tomoka-eng.com website: www.tomoka-engineering.com

DATE ISSUED: 07/23/2003

JOB # T3070PCBW1

SHEET 98 OF 213 SHEETS

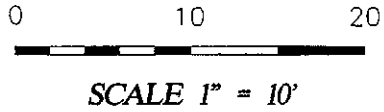
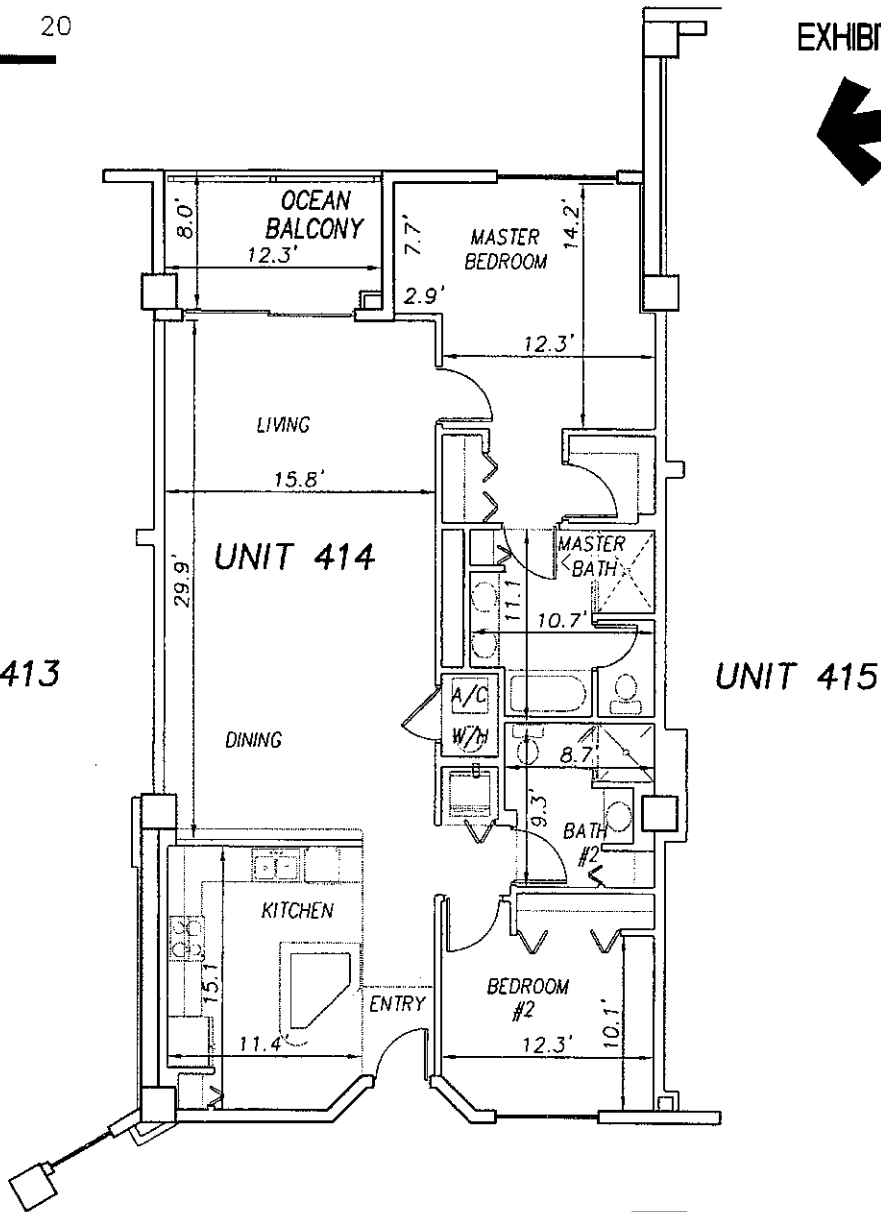


EXHIBIT 'B'



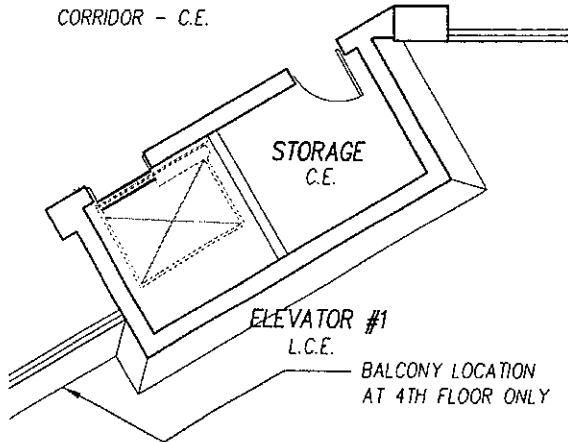
UNIT 413

UNIT 414

UNIT 415

CORRIDOR - C.E.

**SURF CLUB II  
CONDOMINIUM**  
SITUATED IN MATANZAS SHORES  
FLAGLER COUNTY, FLORIDA  
**FOURTH FLOOR - UNIT 414 (South Wing)**



**TOMOKA ENGINEERING**  
CIVIL ENGINEERING & LAND SURVEYING SINCE 1976  
DAYTONA BEACH FLAGLER/PALM COAST  
Main Office: 800 So. Ridgewood Ave., Daytona Beach, FL 32114  
Phone: 386-257-1600 Fax: 386-257-1601  
email: tomoka@tomoka-eng.com website: www.tomoka@tomoka-eng.com

DATE ISSUED: 07/23/2003

JOB # T3070PCBWI

SHEET 99 OF 213 SHEETS

P:\land projects T2003\T3070PCBWI\dwg\CONDO-sh 84 - 109 4th Fl.dwg 09/11/2003 09:52:31 AM EDT

0 10 20

OFF REC 0983 PAGE 0261

EXHIBIT 'B'

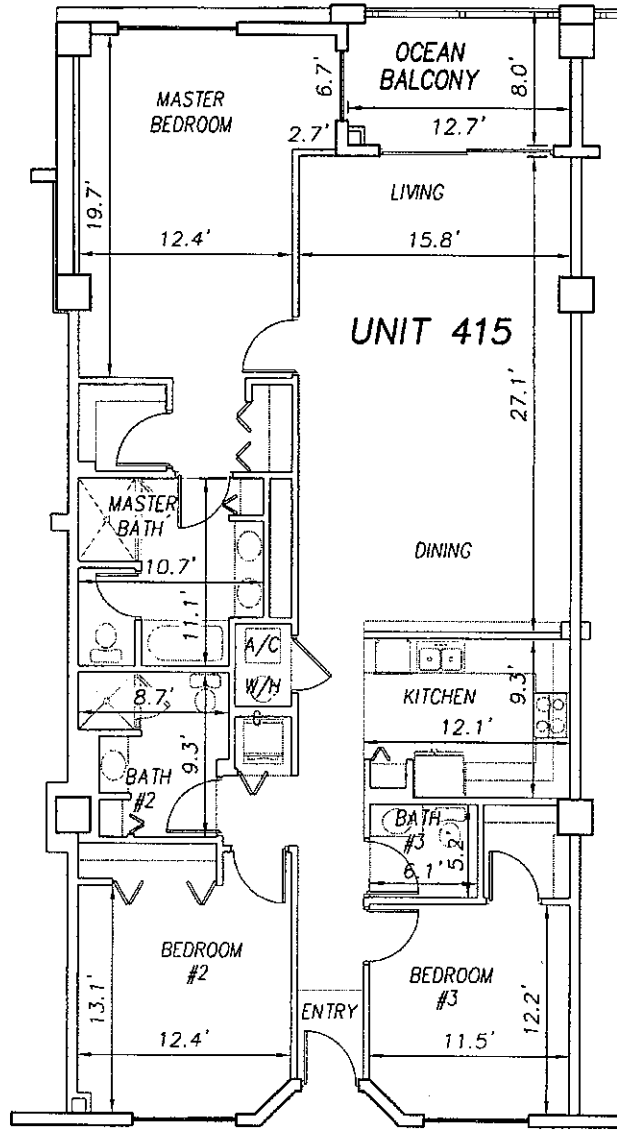
SCALE 1" = 10'



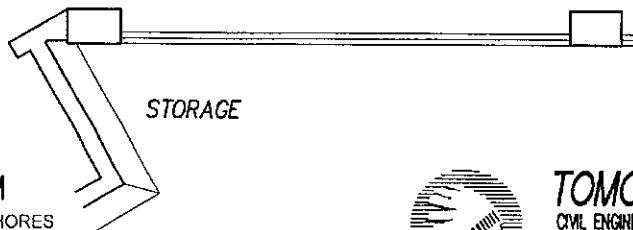
UNIT 414

UNIT 415

UNIT 416



CORRIDOR C.E.



**SURF CLUB II  
CONDOMINIUM**

SITUATED IN MATANZAS SHORES  
FLAGLER COUNTY, FLORIDA

**FOURTH FLOOR - UNIT 415 (South Wing)**



**TOMOKA ENGINEERING**

CIVIL ENGINEERING & LAND SURVEYING SINCE 1976  
DAYTONA BEACH FLAGLER/PALM COAST  
Main Office 900 So. Ridgewood Ave., Daytona Beach, FL 32114  
Phone: 386-257-1600 Fax: 386-257-1601  
email: tomoka@tomoka-eng.com website: www.tomoka@tomoka-eng.com

LB #2232

DATE ISSUED: 07/23/2003

JOB # T3070PCBW1

SHEET 100 OF 213 SHEETS

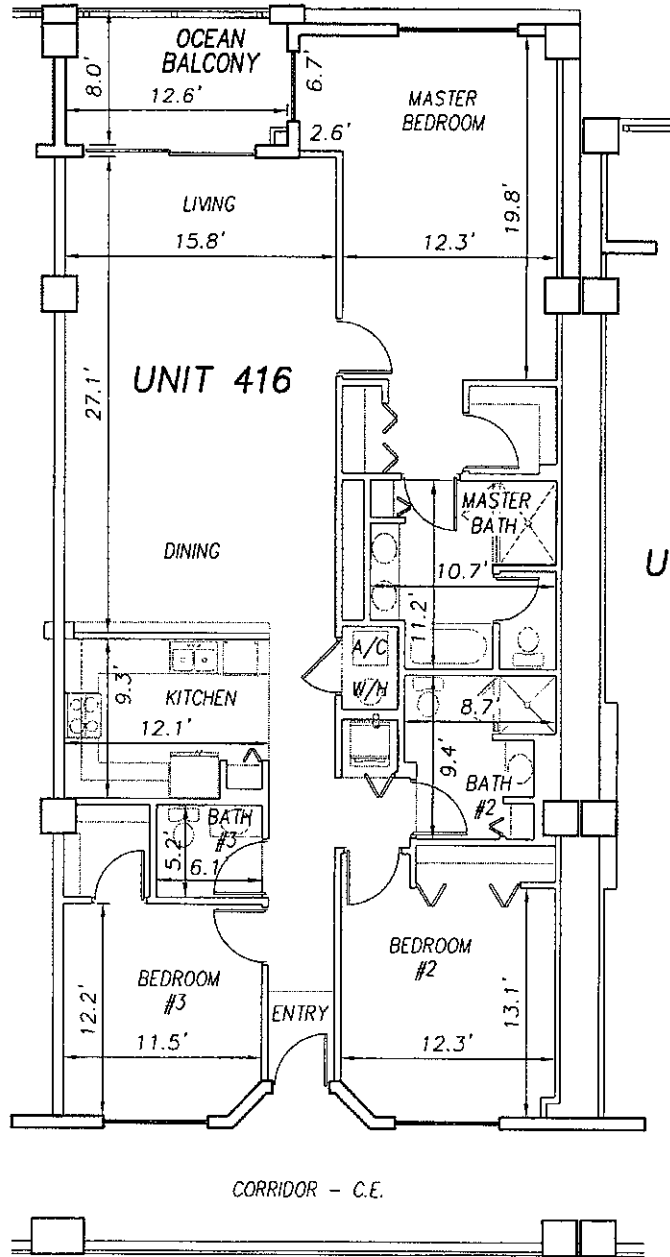
P:\land projects T2003\T3070PCBW1.dwg\CONDO-sh 84 - 109 4th Fl.dwg 09/11/2003 09:52:31 AM EDT

0 10 20

OFF REC 0983 PAGE 0262

EXHIBIT 'B'

SCALE 1" = 10'



UNIT 415

UNIT 416

UNIT 417

**SURF CLUB II  
CONDOMINIUM**

SITUATED IN MATANZAS SHORES  
FLAGLER COUNTY, FLORIDA

**FOURTH FLOOR - UNIT 416 (South Wing)**



**TOMOKA ENGINEERING**

CIVIL ENGINEERING & LAND SURVEYING SINCE 1976  
DAYTONA BEACH FLAGLER/PALM COAST  
Main Office: 900 So. Ridgewood Ave., Daytona Beach, FL 32114  
Phone: 386-257-1600 Fax: 386-257-1601  
email: tomoka@tomoka-eng.com website: www.tomoka@tomoka-eng.com

DATE ISSUED: 07/23/2003

JOB # T3070PCBW

SHEET 101 OF 213 SHEETS

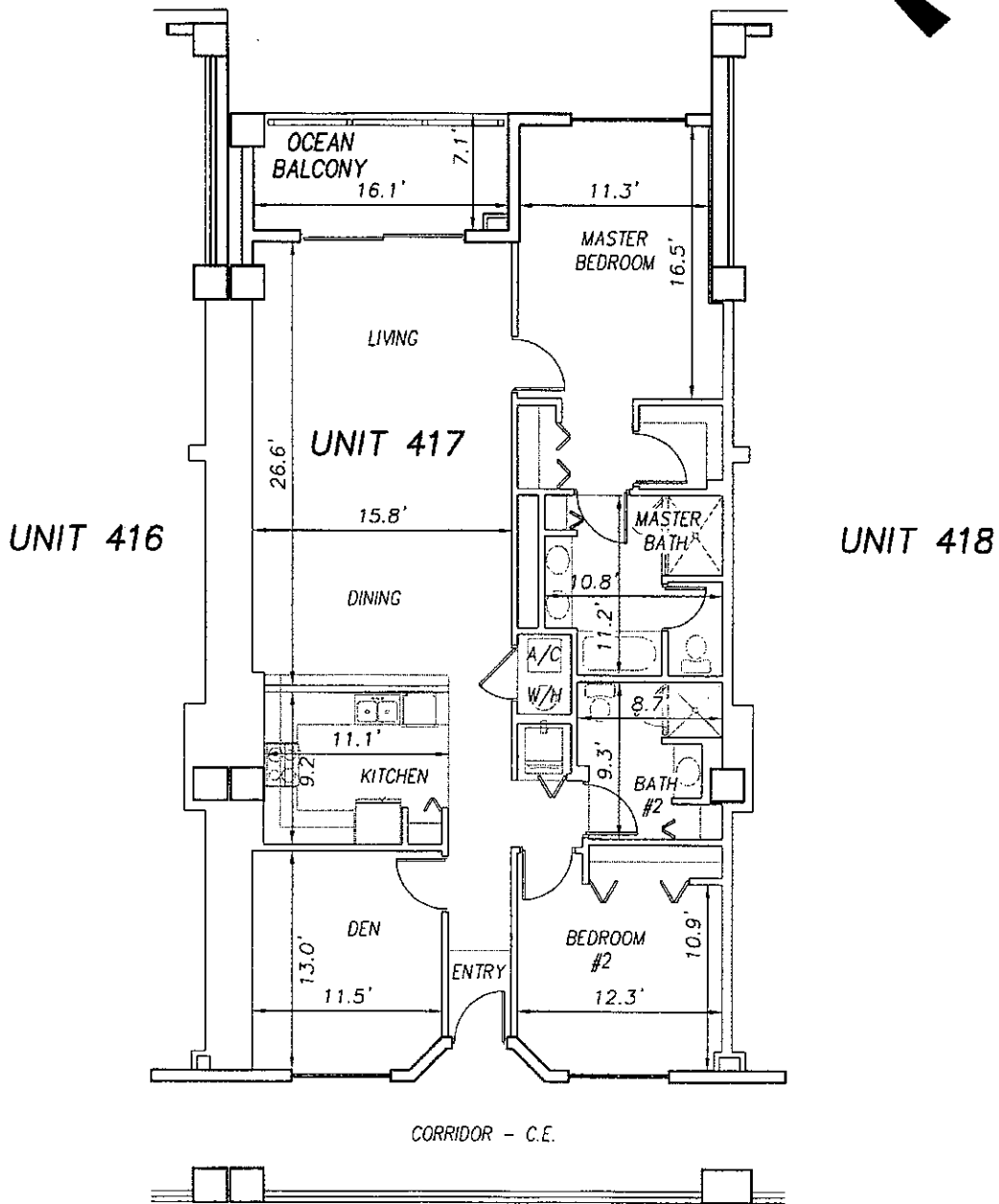
P:\land projects\T2003\T3070PCBW\dwg\CONDO-sh 84 - 109 4th Fl.dwg 09/11/2003 09:52:31 AM EDT

0 10 20

OFF REC 0983 PAGE 0263

EXHIBIT 'B'

SCALE 1" = 10'



P:\cond projects\2003\T3070PCBW\dwg\CONDO-sh 84 - 109 4th Fl.dwg 09/11/2003 09:52:31 AM EDT

**SURF CLUB II  
CONDOMINIUM**

SITUATED IN MATANZAS SHORES  
FLAGLER COUNTY, FLORIDA

**FOURTH FLOOR - UNIT 417 (South Wing)**



**TOMOKA ENGINEERING**

CIVIL ENGINEERING & LAND SURVEYING SINCE 1976  
DAYTONA BEACH FLAGLER/PALM COAST  
Main Office: 900 So. Ridgewood Ave., Daytona Beach, FL 32114  
Phone: 386-257-1600 Fax: 386-257-1601  
email: tomoko@tomoko-eng.com website: www.tomoko@tomoko-eng.com

DATE ISSUED: 07/23/2003

JOB # T3070PCBW1

SHEET 102 OF 213 SHEETS