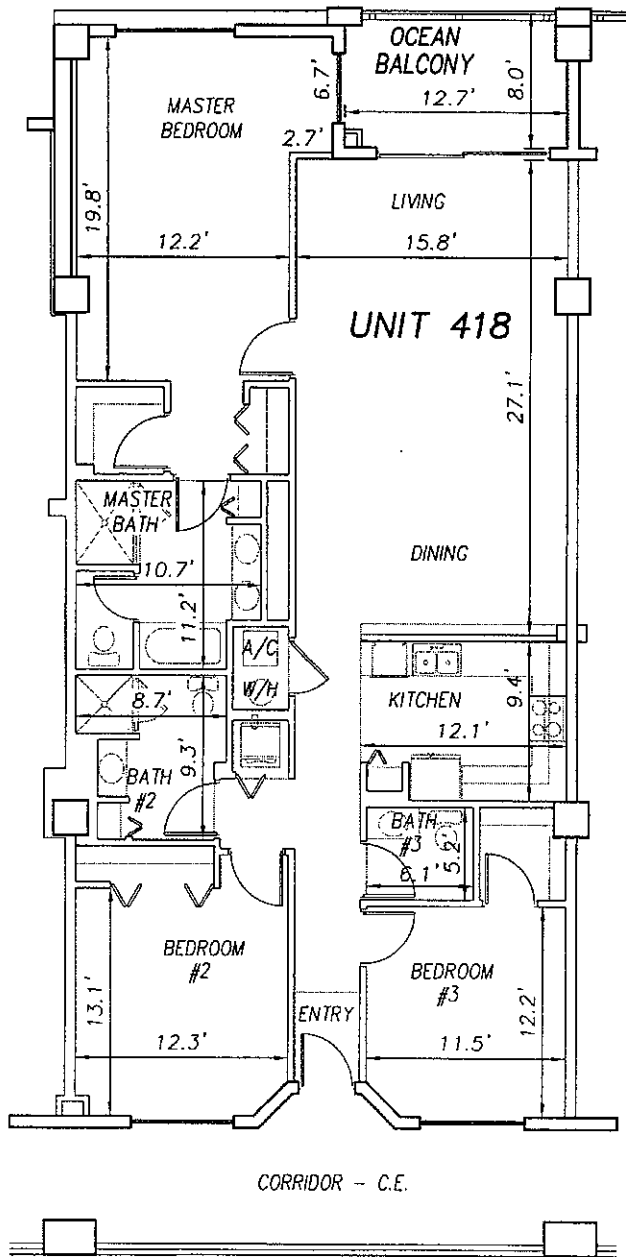


0 10 20

SCALE 1" = 10'

OFF REC 0983 PAGE 0264 EXHIBIT 'B'



P:\land projects T2003\T3070PCBWI\dwg\CONDO-sh 84 - 109 4th Fl.dwg 08/11/2003 09:52:31 AM EDT

**SURF CLUB II  
CONDOMINIUM**

SITUATED IN MATANZAS SHORES  
FLAGLER COUNTY, FLORIDA

**FOURTH FLOOR - UNIT 418 (South Wing)**



**TOMOKA ENGINEERING**

CIVIL ENGINEERING & LAND SURVEYING SINCE 1976  
DAYTONA BEACH FLAGLER/PALM COAST  
Main Office: 900 So. Ridgewood Ave., Daytona Beach, FL 32114  
Phone: 386-257-1600 Fax: 386-257-1601  
email: tomoka@tomoka-eng.com website: www.tomoka@tomoka-eng.com

DATE ISSUED: 07/23/2003

JOB # T3070PCBWI

SHEET 103 OF 213 SHEETS

0 10 20

SCALE 1" = 10'

OFF REC 0983 PAGE 0265

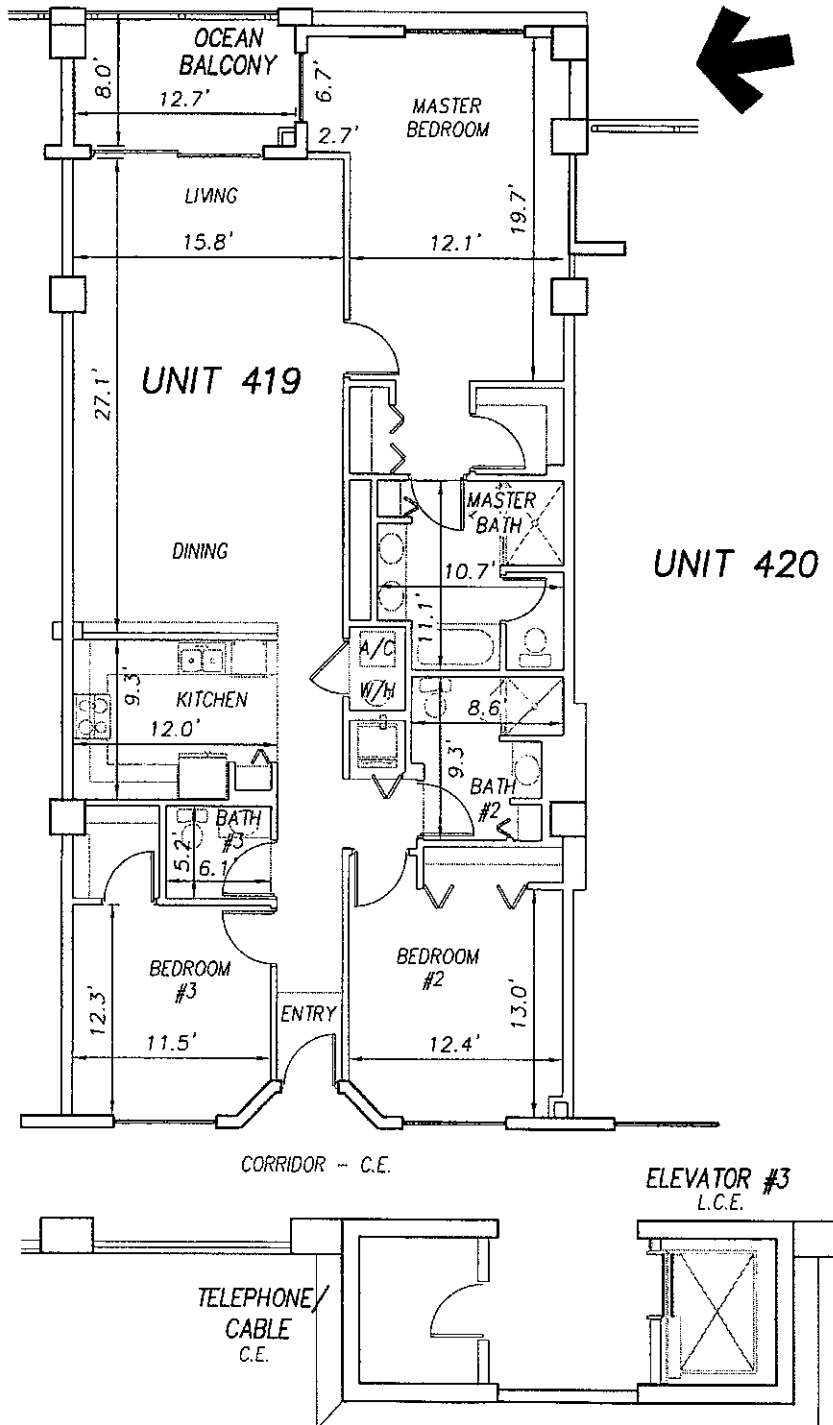
EXHIBIT 'B'



UNIT 418

UNIT 419

UNIT 420



P:\cond projects T2003\T3070PCBW\dwg\CONDO-sh 84 - 109 4th Fl.dwg 09/11/2003 09:52:31 AM EDT

**SURF CLUB II**  
**CONDOMINIUM**  
 SITUATED IN MATANZAS SHORES  
 FLAGLER COUNTY, FLORIDA  
**FOURTH FLOOR - UNIT 419 (South Wing)**



**TOMOKA ENGINEERING**  
 CIVIL ENGINEERING & LAND SURVEYING SINCE 1976  
 DAYTONA BEACH FLAGLER/PALM COAST  
 Main Office: 900 So. Ridgewood Ave., Daytona Beach, FL 32114  
 Phone: 386-257-1600 Fax: 386-257-1801  
 email: tomoka@tomoka-eng.com website: www.tomoka@tomoka-eng.com

DATE ISSUED: 07/23/2003

JOB # T3070PCBW1

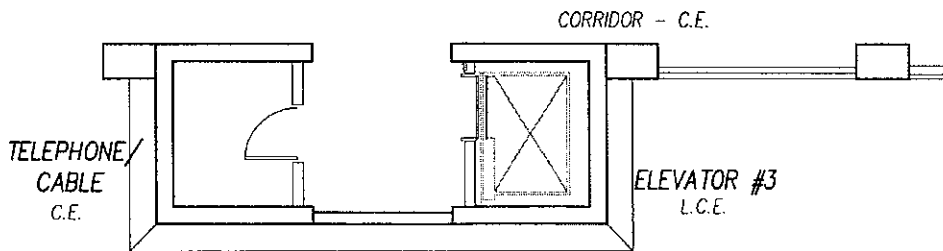
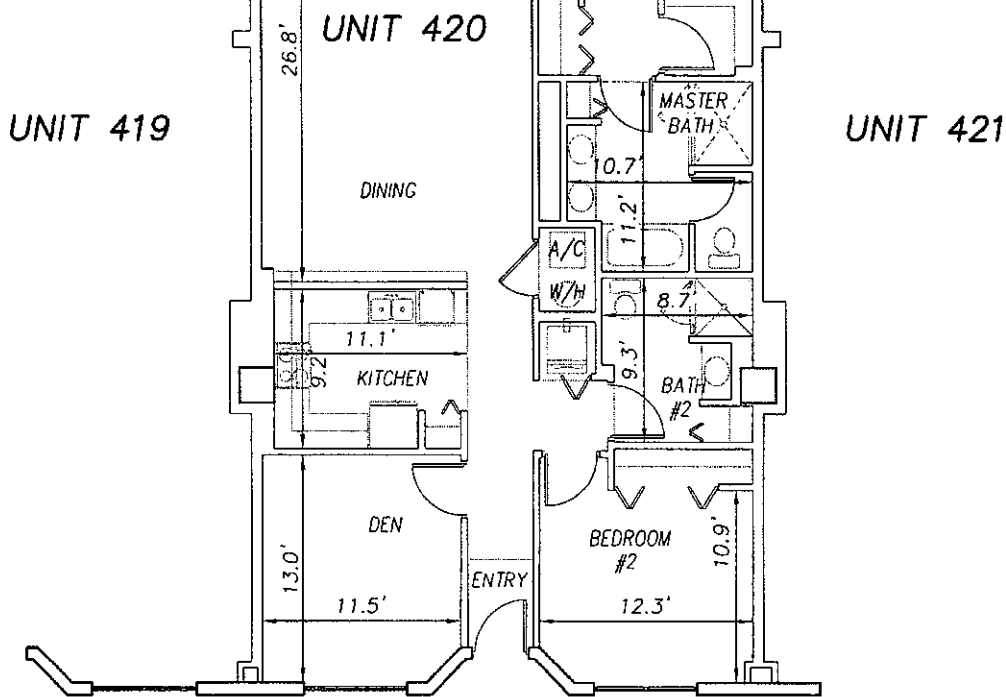
SHEET 104 OF 213 SHEETS

0 10 20

SCALE 1" = 10'

OFF REC 0983 PAGE 0266

EXHIBIT 'B'



**SURF CLUB II  
CONDOMINIUM**  
SITUATED IN MATANZAS SHORES  
FLAGLER COUNTY, FLORIDA  
**FOURTH FLOOR - UNIT 420 (South Wing)**



**TOMOKA ENGINEERING**  
CIVIL ENGINEERING & LAND SURVEYING SINCE 1976  
DAYTONA BEACH FLAGLER/PALM COAST  
Main Office: 900 So. Ridgewood Ave., Daytona Beach, FL 32114  
Phone: 386-257-1800 Fax: 386-257-1801  
email: tomoka@tomoka-eng.com website: www.tomoka@tomoka-eng.com

DATE ISSUED: 07/23/2003

JOB # T3070PCBW1

SHEET 105 OF 213 SHEETS

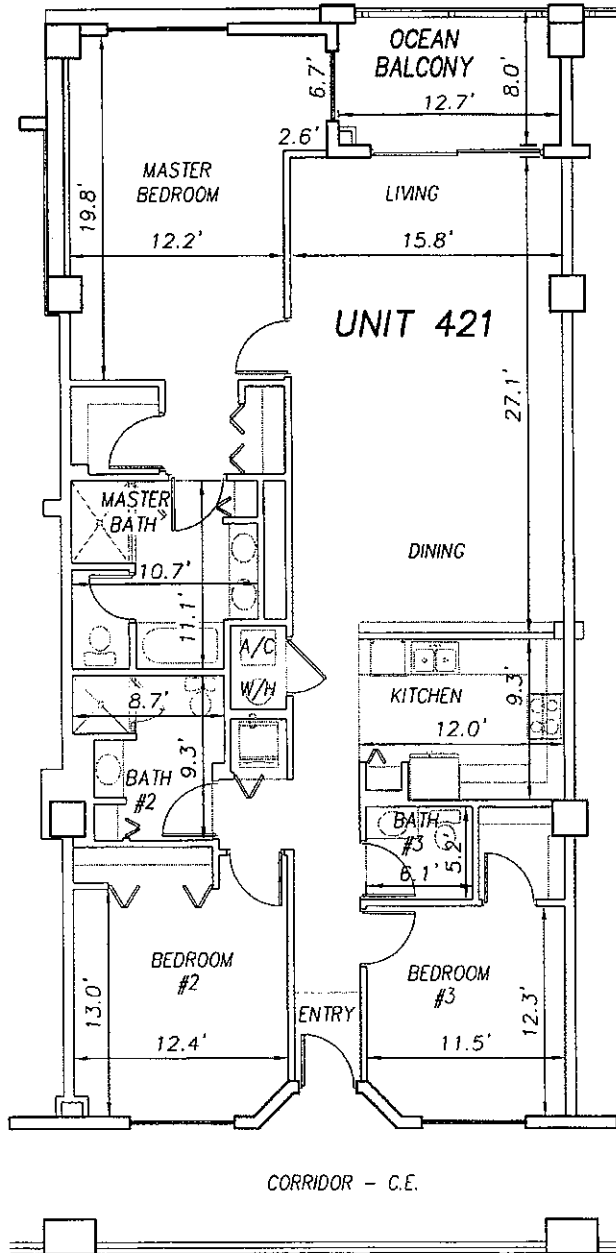
P:\cond projects\T3070PCBW1.dwg\CONDO-sh 84 - 109 4th Fl.dwg 09/11/2003 09:52:31 AM EDT

0 10 20

SCALE 1" = 10'

OFF REC 0983 PAGE 0267

EXHIBIT 'B'



UNIT 420

UNIT 422

CORRIDOR - C.E.

**SURF CLUB II  
CONDOMINIUM**

SITUATED IN MATANZAS SHORES  
FLAGLER COUNTY, FLORIDA

**FOURTH FLOOR - UNIT 421 (South Wing)**



**TOMOKA ENGINEERING**

CIVIL ENGINEERING & LAND SURVEYING SINCE 1976  
DAYTONA BEACH FLAGLER/PALM COAST  
Main Office: 900 So. Ridgewood Ave., Daytona Beach, FL 32114  
Phone: 386-257-1500 Fax: 386-257-1501  
email: tomoka@tomoka-eng.com website: www.tomoka-tomoka-eng.com

LB #2232

DATE ISSUED: 07/23/2003

JOB # T3070PCBWI

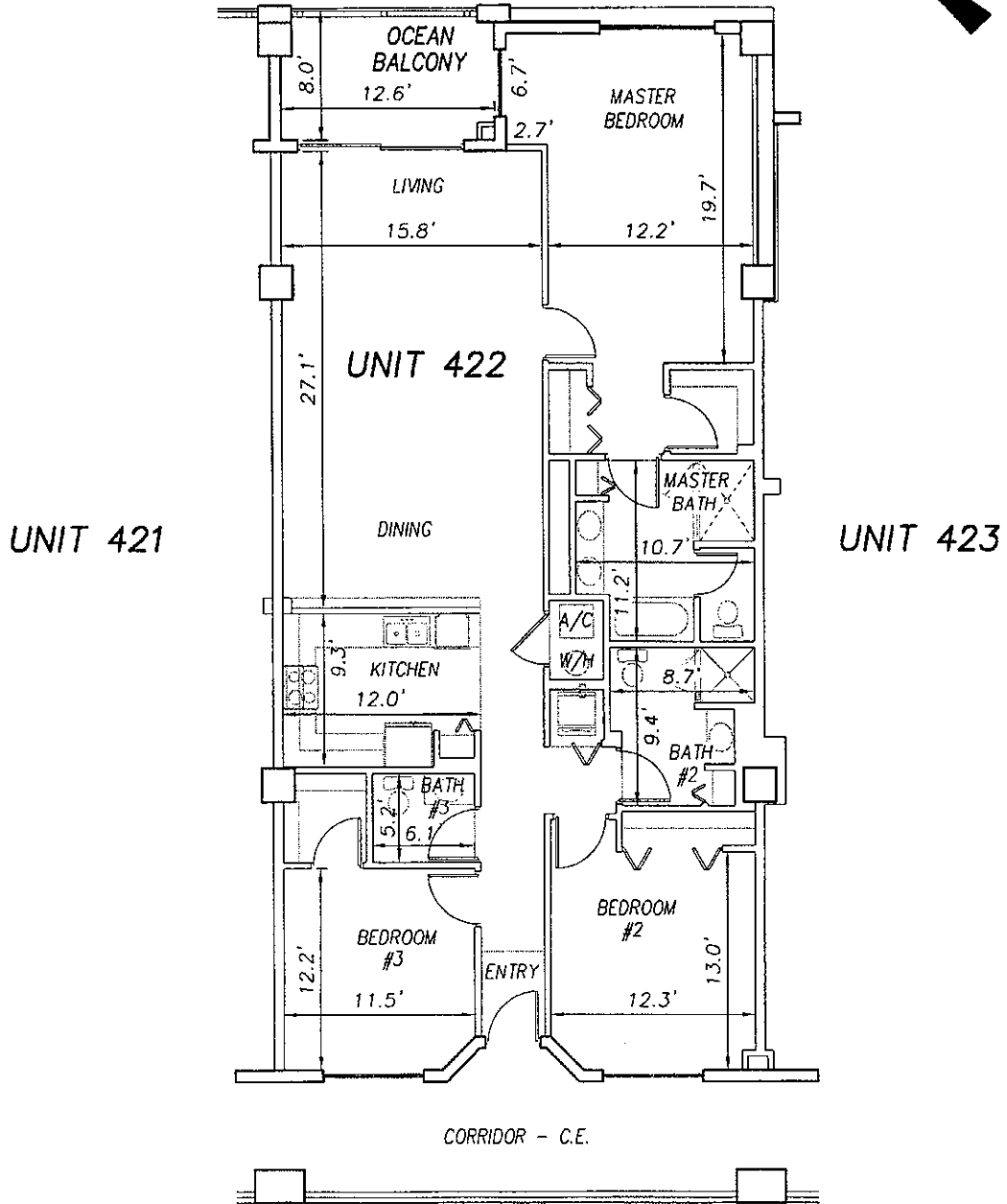
SHEET 106 OF 213 SHEETS

P:\land projects T2003\T3070PCBWI\dwg\CONDO--sh 84 -- 109 4th Fl.dwg 09/11/2003 09:52:31 AM EDT

0 10 20

OFF REC 0983 PAGE 0268 - EXHIBIT 'B'

SCALE 1" = 10'



UNIT 421

UNIT 423

CORRIDOR - C.E.

**SURF CLUB II  
CONDOMINIUM**

SITUATED IN MATANZAS SHORES  
FLAGLER COUNTY, FLORIDA

**FOURTH FLOOR - UNIT 422 (South Wing)**



**TOMOKA ENGINEERING**

CIVIL ENGINEERING & LAND SURVEYING SINCE 1976  
DAYTONA BEACH FLAGLER/PALM COAST  
Main Office: 900 So. Ridgewood Ave., Daytona Beach, FL 32114  
Phone: 386-257-1600 Fax: 386-257-1601  
email: tomoka@tomoka-eng.com website: www.tomoka@tomoka-eng.com

DATE ISSUED: 07/23/2003

JOB # T3070PCBWI

SHEET 107 OF 213 SHEETS

P:\land projects T2003\T3070PCBWI\dwg\CONDO-sh 84 - 109 4th Fl.dwg 09/11/2003 09:52:31 AM EDT

0 10 20

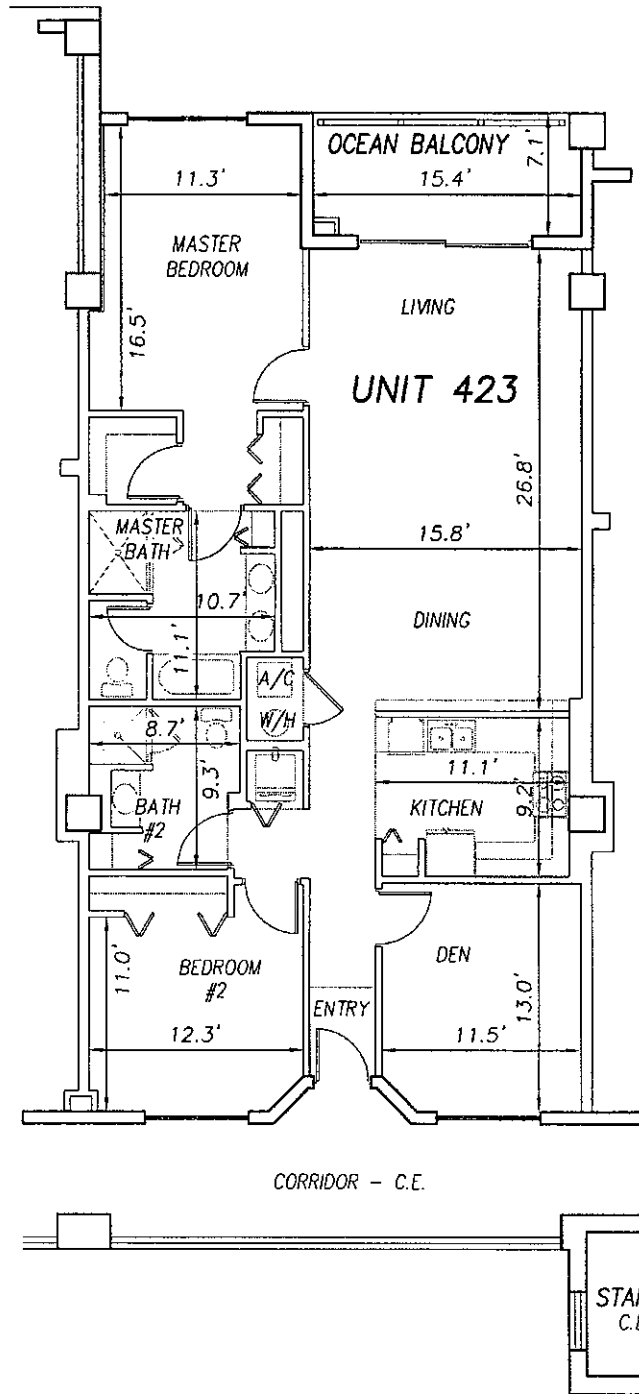
SCALE 1" = 10'

OFF REC 0983 PAGE 0269 EXHIBIT 'B'



UNIT 422

UNIT 424



P:\land projects T2003\T3070PCBW\dwg\CONDO-sh 84 - 109 4th Fl.dwg 09/11/2003 09:52:31 AM EDT

**SURF CLUB II  
CONDOMINIUM**  
SITUATED IN MATANZAS SHORES  
FLAGLER COUNTY, FLORIDA  
**FOURTH FLOOR - UNIT 423 (South Wing)**



**TOMOKA ENGINEERING**  
CIVIL ENGINEERING & LAND SURVEYING SINCE 1976  
DAYTONA BEACH FLAGLER/PALM COAST  
Main Office: 900 So. Ridgewood Ave., Daytona Beach, FL 32114  
Phone: 386-257-1600 Fax: 386-257-1601  
email: tomoka@tomoka-eng.com website: www.tomoka@tomoka-eng.com

DATE ISSUED: 07/23/2003

JOB # T3070PCBW1

SHEET 108 OF 213 SHEETS

0 10 20

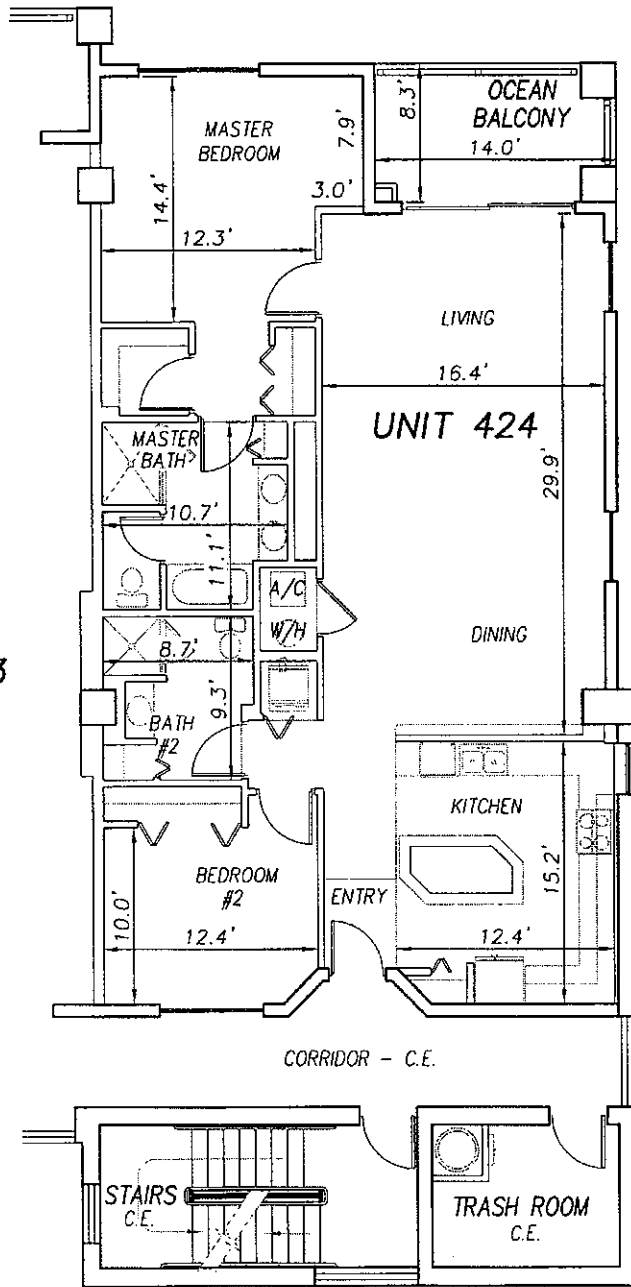
SCALE 1" = 10'

OFF REC 0983 PAGE 0270 EXHIBIT 'B'



UNIT 423

UNIT 424



P:\land projects T2003\T3070PCBW\dwg\CONDO-sh 84 - 109 4th Fl.dwg 09/11/2003 09:52:31 AM EDT

**SURF CLUB II  
CONDOMINIUM**  
SITUATED IN MATANZAS SHORES  
FLAGLER COUNTY, FLORIDA  
**FOURTH FLOOR - UNIT 424 (South Wing)**



**TOMOKA ENGINEERING**  
CIVIL ENGINEERING & LAND SURVEYING SINCE 1978  
DAYTONA BEACH FLAGLER/PALM COAST  
Main Office: 900 So. Ridgewood Ave., Daytona Beach, FL 32114  
Phone: 386-257-1600 Fax: 386-257-1801  
e-mail: tomoka@tomoka-eng.com website: www.tomoka@tomoka-eng.com

DATE ISSUED: 07/23/2003

JOB # T3070PCBW1

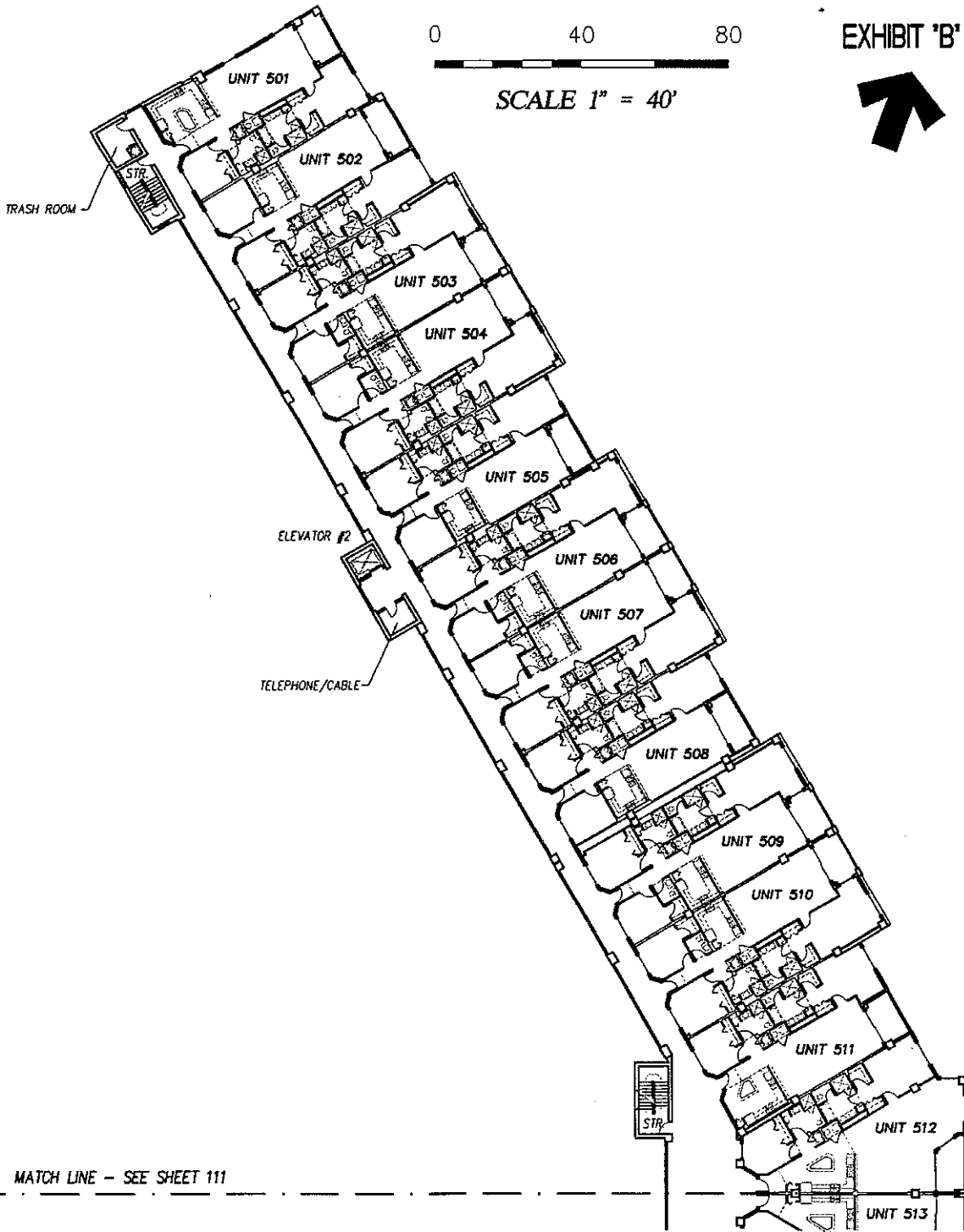
SHEET 109 OF 213 SHEETS

0 40 80



SCALE 1" = 40'

EXHIBIT 'B'



MATCH LINE - SEE SHEET 111

**SURF CLUB II  
CONDOMINIUM**

SITUATED IN MATANZAS SHORES  
FLAGLER COUNTY, FLORIDA

**FIFTH FLOOR - OVERALL LAYOUT (North Wing)**



**TOMOKA ENGINEERING**

CIVIL ENGINEERING & LAND SURVEYING SINCE 1976  
DAYTONA BEACH FLAGLER/PALM COAST

Main Office: 900 So. Ridgewood Ave., Daytona Beach, FL 32114  
Phone: 386-257-1600 Fax: 386-257-1601  
email: tomoka@tomoka-eng.com website: www.tomoka@tomoka-eng.com

LD #2232

DATE ISSUED: 07/23/2003

JOB # T3070PCBWI

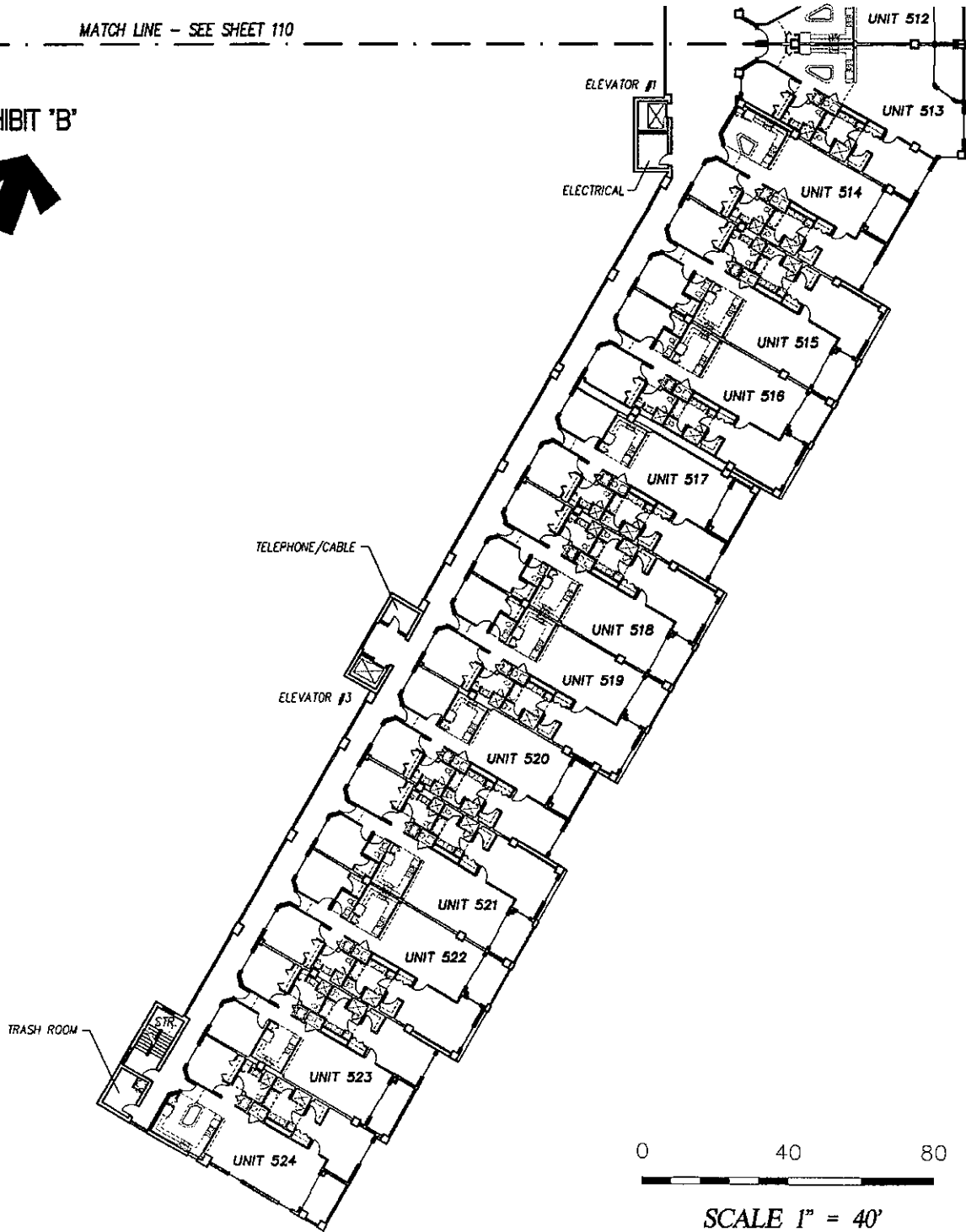
SHEET 110 OF 213 SHEETS

P:\cond projects T2003\T3070PCBWI.dwg\CONDO-sh 110 - 135 5th Fl.dwg 09/11/2003 10:05:50 AM EDT



MATCH LINE - SEE SHEET 110

EXHIBIT 'B'



**SURF CLUB II  
CONDOMINIUM**

SITUATED IN MATANZAS SHORES  
FLAGLER COUNTY, FLORIDA

**FIFTH FLOOR - OVERALL LAYOUT (South Wing)**



**TOMOKA ENGINEERING**

CIVIL ENGINEERING & LAND SURVEYING SINCE 1976  
DAYTONA BEACH FLAGLER/PALM COAST  
Main Office: 900 So. Ridgewood Ave., Daytona Beach, FL 32114  
Phone: 386-257-1000 Fax: 386-257-1601  
email: tomoka@tomoka-eng.com website: www.tomoka@tomoka-eng.com

DATE ISSUED: 07/23/2003

JOB # T3070PCBWI

SHEET 111 OF 213 SHEETS

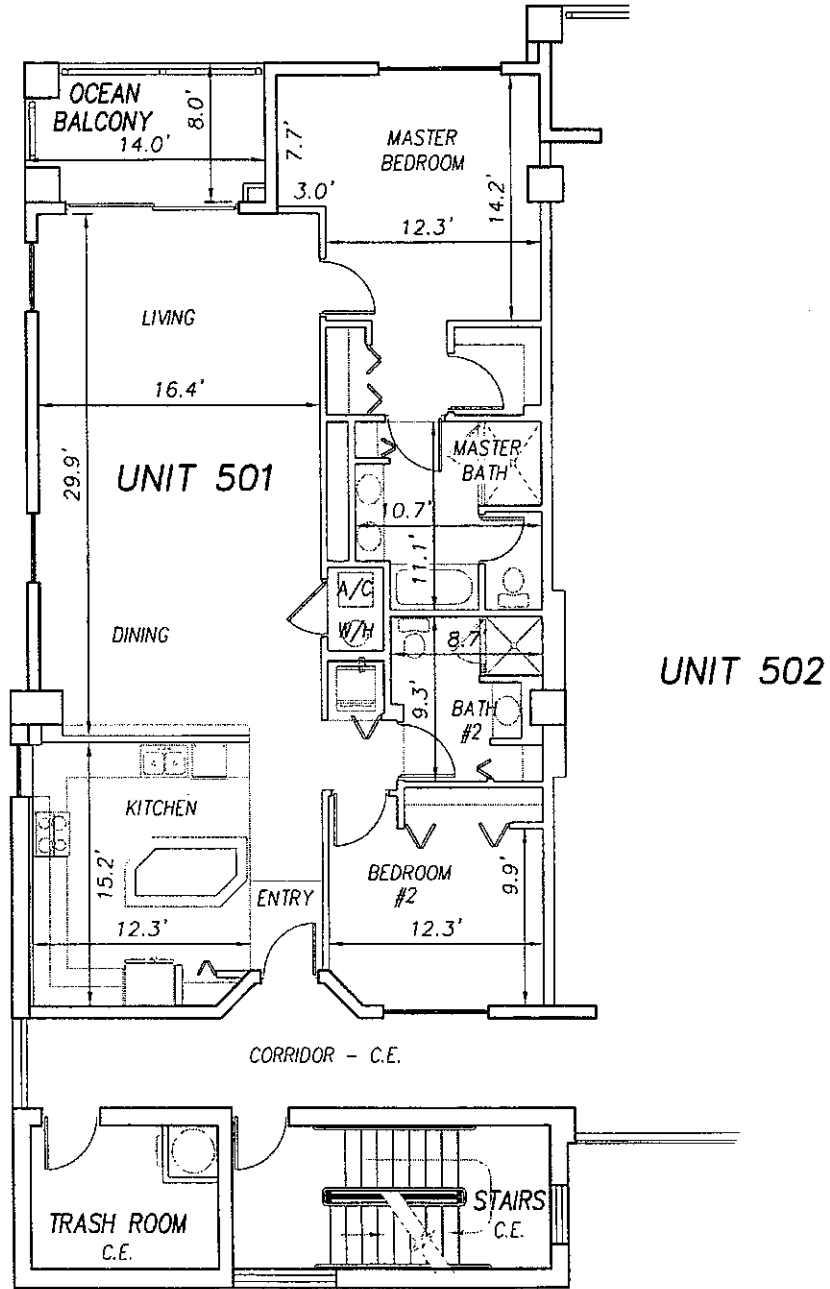
P:\land projects T2003\T3070PCBWI\dwg\CONDO-sh 110 - 135 5th Fl.dwg 09/11/2003 10:05:50 AM EDT

0 10 20

SCALE 1" = 10'

OFF REC 0983 PAGE 0273

EXHIBIT 'B'



P:\cond projects T2003\T3070PCBWI\dwg\CONDO-sh 110 - 135 5th Fl.dwg 09/11/2003 10:05:50 AM EDT

**SURF CLUB II  
CONDOMINIUM**  
SITUATED IN MATANZAS SHORES  
FLAGLER COUNTY, FLORIDA  
**FIFTH FLOOR - UNIT 501 (North Wing)**



**TOMOKA ENGINEERING**  
CIVIL ENGINEERING & LAND SURVEYING SINCE 1976  
DAYTONA BEACH FLAGLER/PALM COAST  
Main Office: 900 So. Ridgewood Ave., Daytona Beach, FL 32114  
Phone: 386-257-1500 Fax: 386-257-1801  
email: tomako@tomoka-eng.com website: www.tomoka@tomoka-eng.com

DATE ISSUED: 07/23/2003

JOB # T3070PCBWI

SHEET 112 OF 213 SHEETS

0 10 20

OFF REC 0983 PAGE 0274

EXHIBIT 'B'

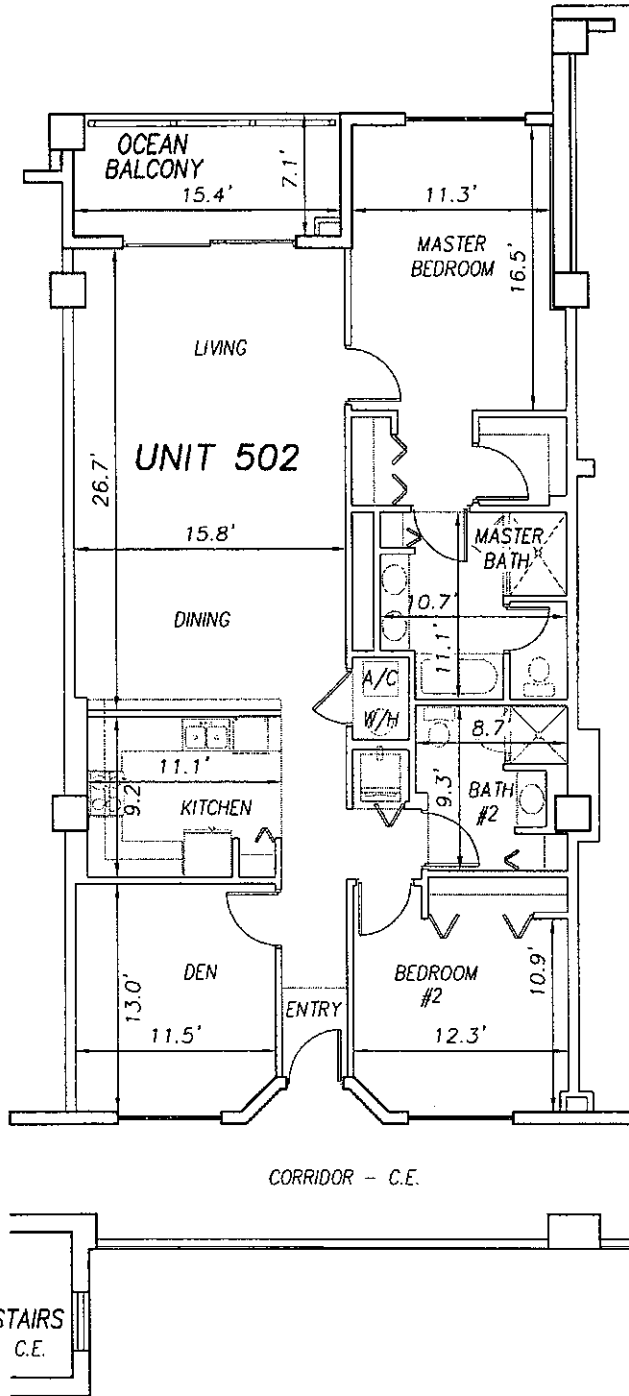
SCALE 1" = 10'



UNIT 501

UNIT 502

UNIT 503



P:\land projects T2003\T3070PCBWI\dwg\CONDO-sh 110 - 135 5th Fl.dwg 09/11/2003 10:05:50 AM EDT

**SURF CLUB II  
CONDOMINIUM**  
SITUATED IN MATANZAS SHORES  
FLAGLER COUNTY, FLORIDA  
**FIFTH FLOOR - UNIT 502 (North Wing)**



**TOMOKA ENGINEERING**  
CIVIL ENGINEERING & LAND SURVEYING SINCE 1976  
DAYTONA BEACH FLAGLER/PALM COAST  
Main Office: 900 So. Ridgewood Ave., Daytona Beach, FL 32114  
Phone: 386-257-1600 Fax: 386-257-1501  
email: tomoka@tomoka-eng.com website: www.tomoka-tomoka-eng.com

DATE ISSUED: 07/23/2003

JOB # T3070PCBWI

SHEET 113 OF 213 SHEETS

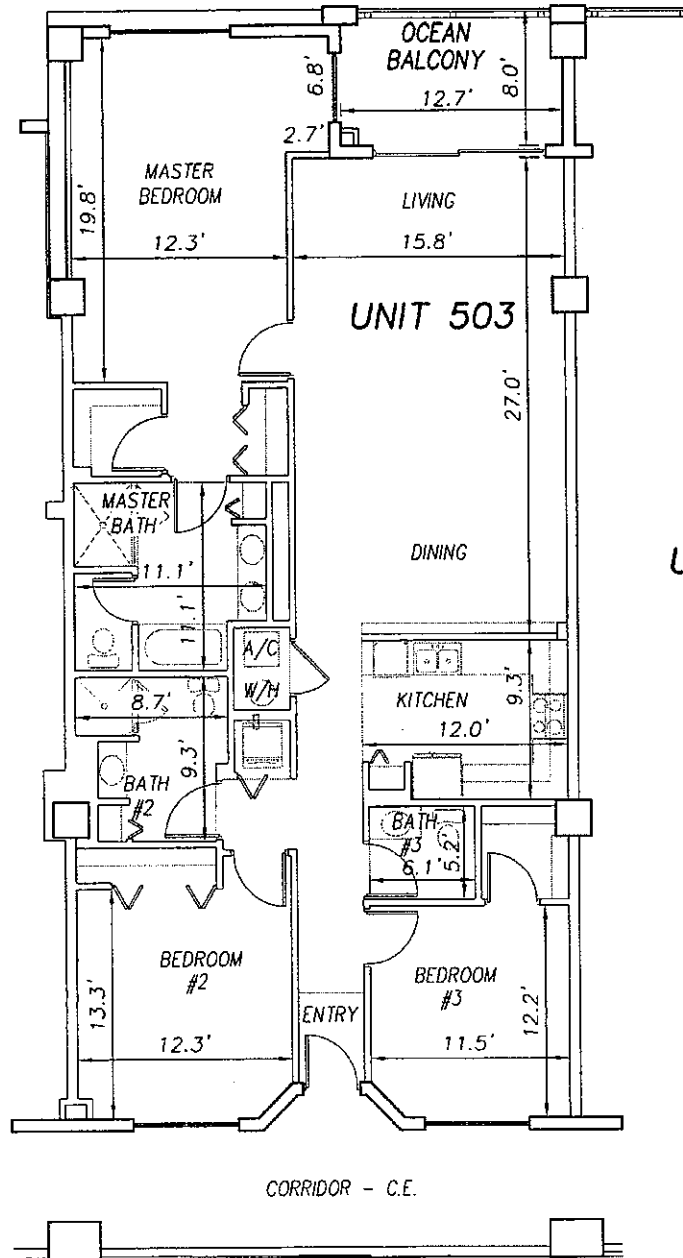
0 10 20

OFF REC 0983 PAGE 0275 EXHIBIT 'B'

SCALE 1" = 10'



UNIT 502



**SURF CLUB II  
CONDOMINIUM**

SITUATED IN MATANZAS SHORES  
FLAGLER COUNTY, FLORIDA

**FIFTH FLOOR - UNIT 503 (North Wing)**



**TOMOKA ENGINEERING**

CIVIL ENGINEERING & LAND SURVEYING SINCE 1976  
DAYTONA BEACH FLAGLER/PALM COAST  
Main Office: 900 So. Ridgewood Ave., Daytona Beach, FL 32114  
Phone: 386-257-1600 Fax: 386-257-1601  
email: tomoka@tomoka-eng.com website: www.tomoka@tomoka-eng.com

DATE ISSUED: 07/23/2003

JOB # T3070PCBWI

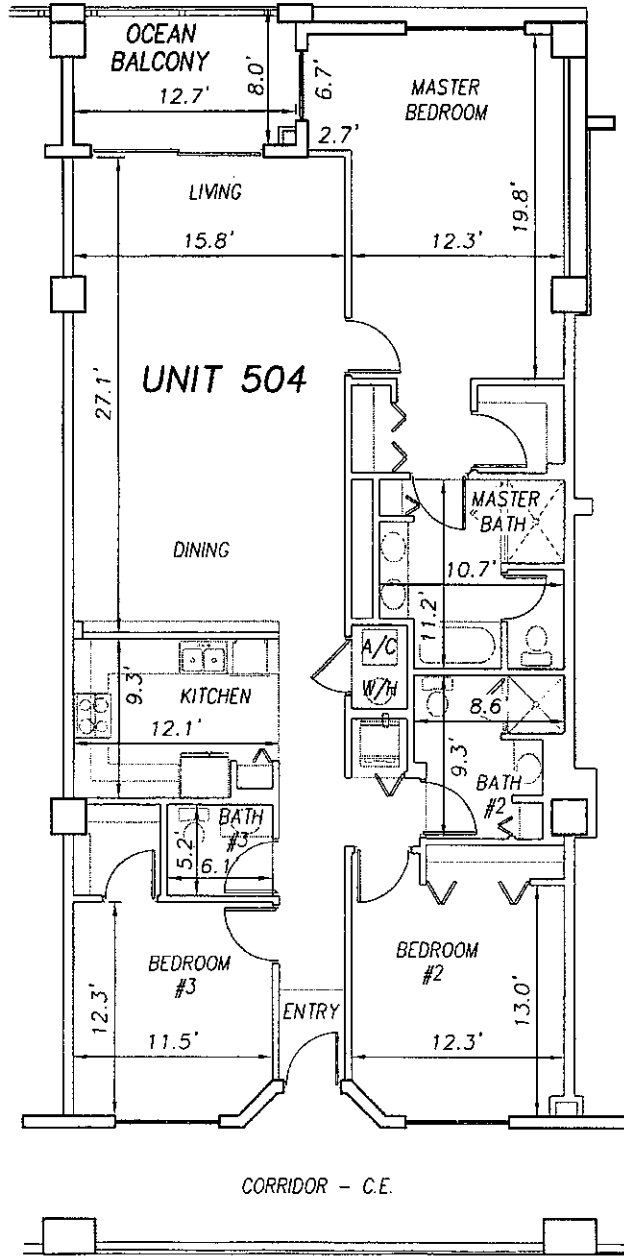
SHEET 114 OF 213 SHEETS

P:\cond projects T2003\T3070PCBWI\dwg\CONDO--sh 110 - 135 5th Fl.dwg 09/11/2003 10:05:50 AM EDT

0 10 20

SCALE 1" = 10'

OFF REC 0983 PAGE 0276 EXHIBIT 'B'



UNIT 503

UNIT 504

UNIT 505

**SURF CLUB II  
CONDOMINIUM**

SITUATED IN MATANZAS SHORES  
FLAGLER COUNTY, FLORIDA

**FIFTH FLOOR - UNIT 504 (North Wing)**



**TOMOKA ENGINEERING**

CIVIL ENGINEERING & LAND SURVEYING SINCE 1976  
DAYTONA BEACH FLAGLER/PALM COAST  
Main Office: 900 So. Fiddgewood Ave., Daytona Beach, FL 32114  
Phone: 386-257-1600 Fax: 386-257-1601  
email: tomoka@tomoka-eng.com website: www.tomoka@tomoka-eng.com

DATE ISSUED: 07/23/2003

JOB # T3070PCBWI

SHEET 115 OF 213 SHEETS

P:\land projects T2003\T3070PCBWI\dwg\CONDO-sh 110 - 135 5th Fl.dwg 09/11/2003 10:05:50 AM EDT

0 10 20

SCALE 1" = 10'

OFF REC 0983 PAGE 0277

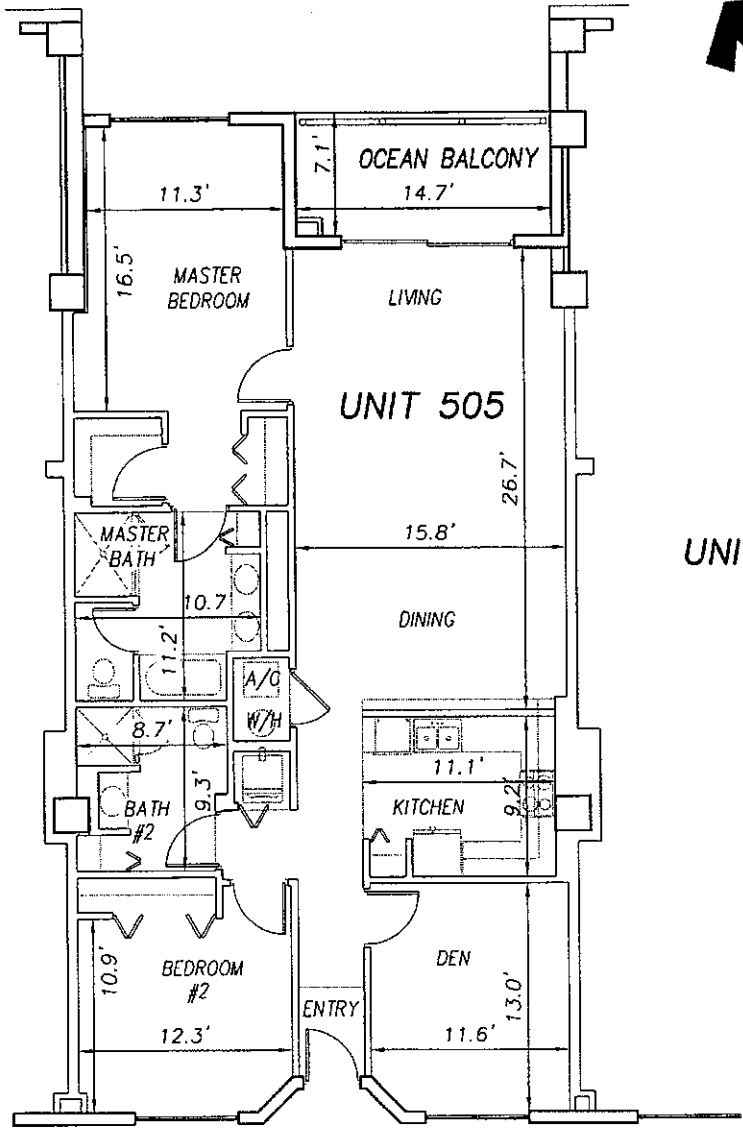
EXHIBIT 'B'



UNIT 504

UNIT 505

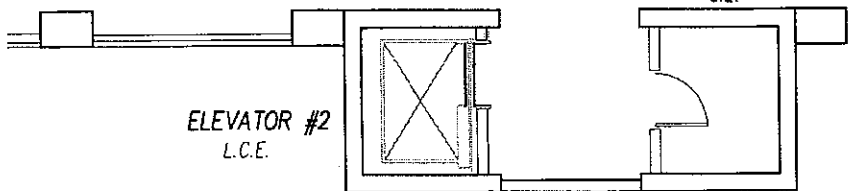
UNIT 506



CORRIDOR - C.E.

TELEPHONE/CABLE C.E.

ELEVATOR #2 L.C.E.



SURF CLUB II  
CONDOMINIUM

SITUATED IN MATANZAS SHORES  
FLAGLER COUNTY, FLORIDA

FIFTH FLOOR - UNIT 505 (North Wing)



**TOMOKA ENGINEERING**

CIVIL ENGINEERING & LAND SURVEYING SINCE 1976  
DAYTONA BEACH FLAGLER/PALM COAST

Main Office: 900 So. Ridgewood Ave., Daytona Beach, FL 32114  
Phone: 386-257-1600 Fax: 386-257-1601  
email: tomoka@tomoka-eng.com website: www.tomoka@tomoka-eng.com

DATE ISSUED: 07/23/2003

JOB # T3070PCBWI

SHEET 116 OF 213 SHEETS

P:\cond\_projects\T2003\T3070PCBWI\dwg\CONDO-sh 110 - 135 5th Fl.dwg 09/11/2003 10:05:50 AM EDT

0 10 20

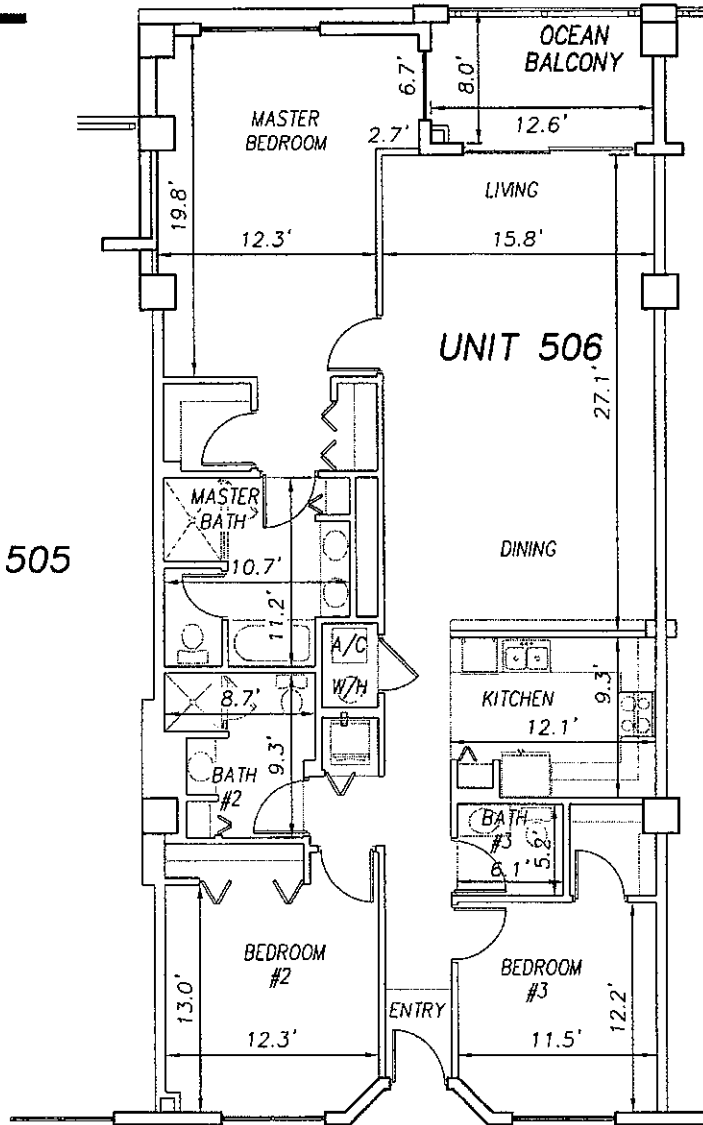
SCALE 1" = 10'



UNIT 505

UNIT 506

UNIT 507



CORRIDOR - C.E.

ELEVATOR #2  
L.C.E.

TELEPHONE/CABLE  
C.E.

**SURF CLUB II  
CONDOMINIUM**

SITUATED IN MATANZAS SHORES  
FLAGLER COUNTY, FLORIDA

**FIFTH FLOOR - UNIT 506 (North Wing)**



**TOMOKA ENGINEERING**  
CIVIL ENGINEERING & LAND SURVEYING SINCE 1976  
DAYTONA BEACH FLAGLER/PALM COAST  
Main Office: 900 So. Ridgewood Ave., Daytona Beach, FL 32114  
Phone: 386-257-1500 Fax: 386-257-1501  
email: tomoka@tomoka-eng.com website: www.tomoka@tomoka-eng.com

DATE ISSUED: 07/23/2003

JOB # T3070PCBWI

SHEET 117 OF 213 SHEETS

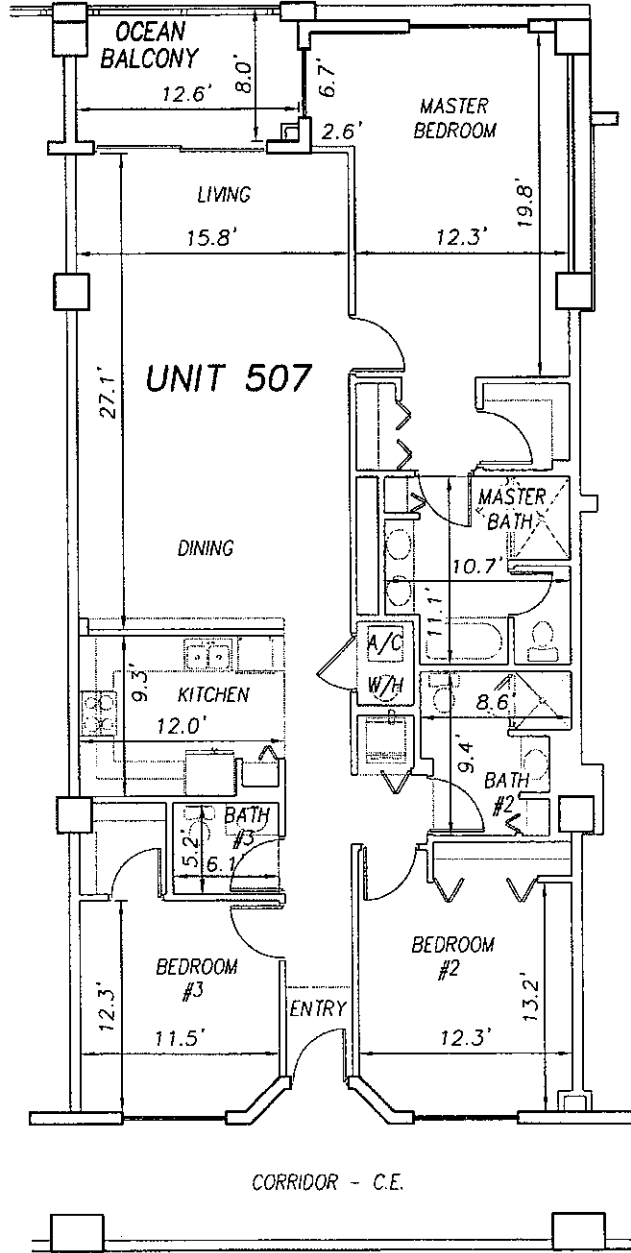
P:\cond projects T2003\T3070PCBWI\dwg\CONDO-sh 110 - 135 5th Fl.dwg 09/11/2003 10:05:50 AM EDT

0 10 20

SCALE 1" = 10'

OFF REC 0983 PAGE 0279

EXHIBIT 'B'



UNIT 506

UNIT 507

UNIT 508

P:\cond\_projects\T2003\T3070PCBW\dwg\CONDO--sh 110 - 135 5th Fl.dwg 09/11/2003 10:05:50 AM EDT

**SURF CLUB II  
CONDOMINIUM**  
SITUATED IN MATANZAS SHORES  
FLAGLER COUNTY, FLORIDA  
**FIFTH FLOOR - UNIT 507 (North Wing)**



**TOMOKA ENGINEERING**  
CIVIL ENGINEERING & LAND SURVEYING SINCE 1976  
DAYTONA BEACH FLAGLER/PALM COAST  
Main Office: 900 So. Ridgewood Ave., Daytona Beach, FL 32114  
Phone: 386-257-1800 Fax: 386-257-1801  
email: tomoka@tomoka-eng.com web site: www.tomoka@tomoka-eng.com

DATE ISSUED: 07/23/2003

JOB # T3070PCBW

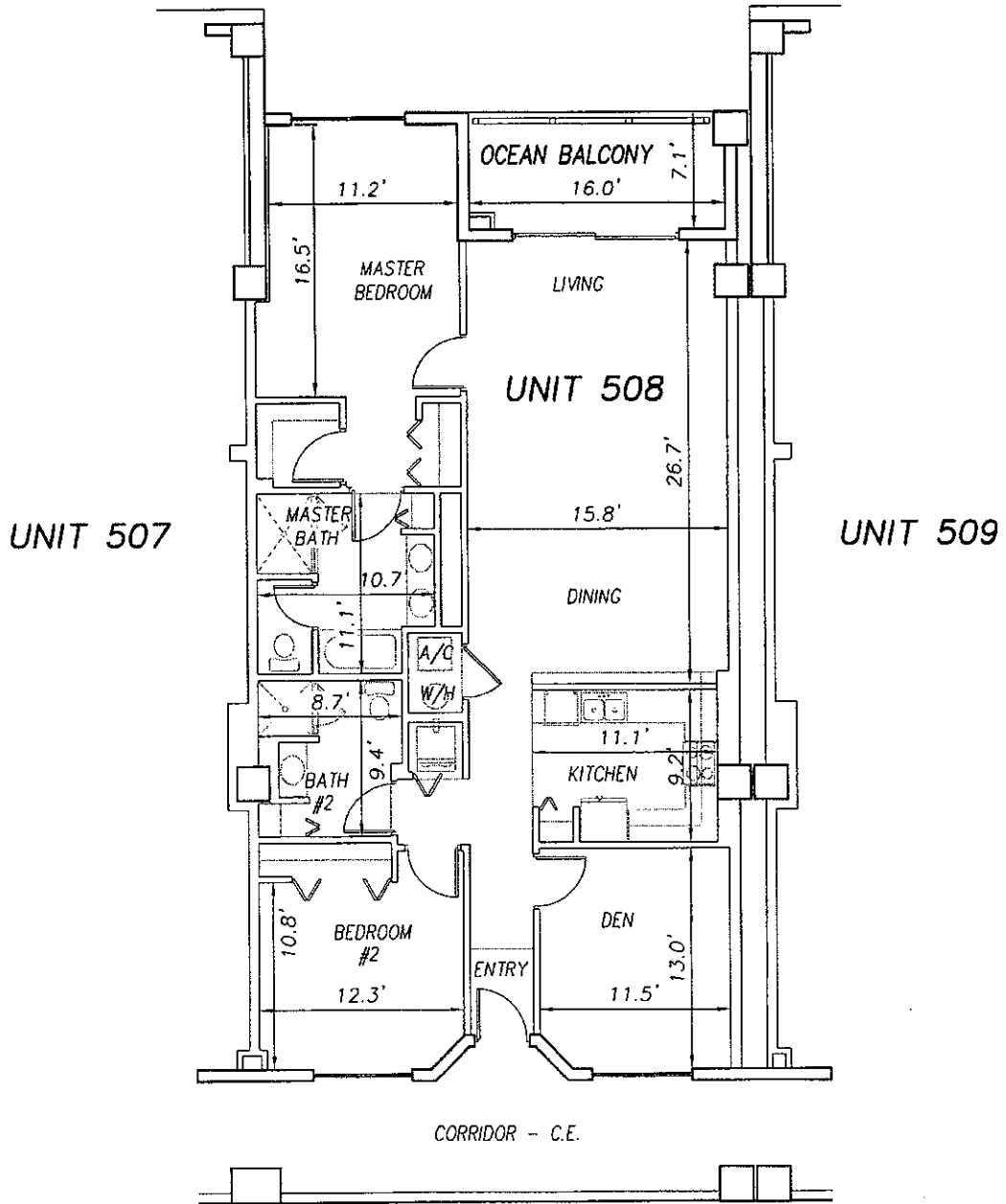
SHEET 118 OF 213 SHEETS



0 10 20

SCALE 1" = 10'

OFF REC 0983 PAGE 0280 EXHIBIT 'B'



P:\land\_projects\T2003\T3070PCBWI\CONDO-sh 110 - 135 5th Fl.dwg 09/11/2003 10:05:50 AM EDT

**SURF CLUB II  
CONDOMINIUM**  
SITUATED IN MATANZAS SHORES  
FLAGLER COUNTY, FLORIDA  
**FIFTH FLOOR - UNIT 508 (North Wing)**



**TOMOKA ENGINEERING**  
CIVIL ENGINEERING & LAND SURVEYING SINCE 1976  
DAYTONA BEACH FLAGLER/PALM COAST  
Main Office: 900 So. Ridgewood Ave., Daytona Beach, FL 32114  
Phone: 386-257-1800 Fax: 386-257-1801  
e-mail: tomoka@tomoka-eng.com website: www.tomoka@tomoka-eng.com

DATE ISSUED: 07/23/2003

JOB # T3070PCBWI

SHEET 119 OF 213 SHEETS

0 10 20

SCALE 1" = 10'

OFF REC 0983 PAGE 0281

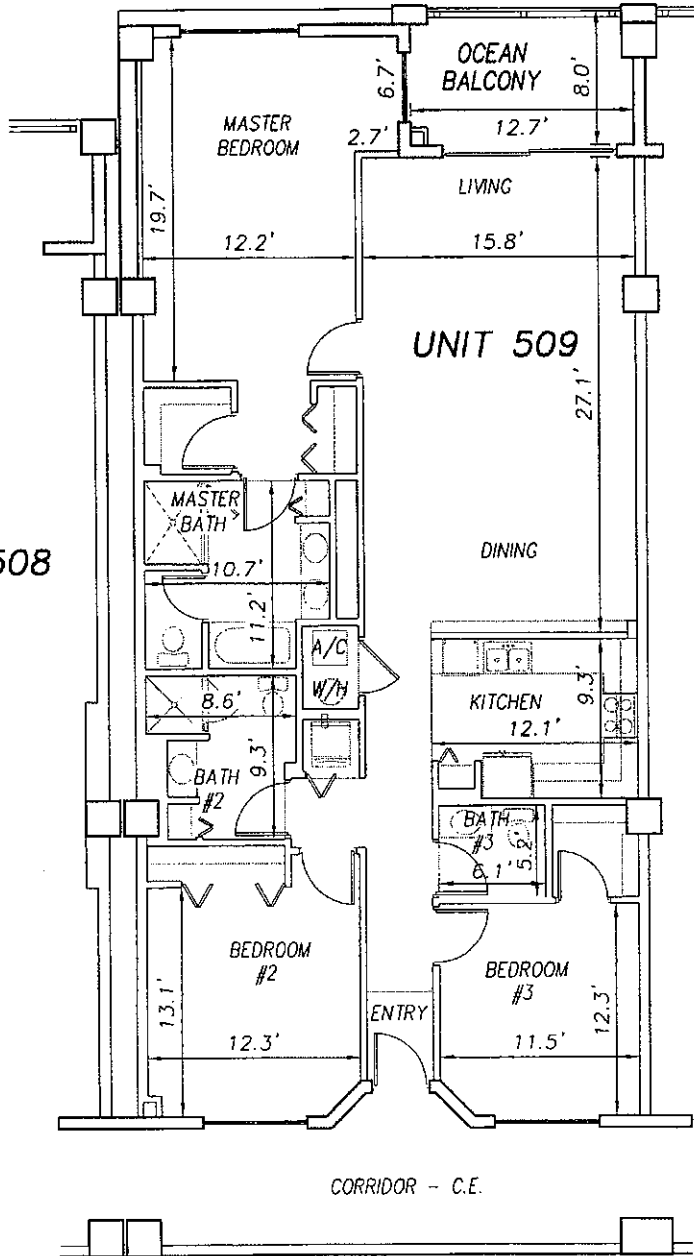
EXHIBIT 'B'



UNIT 508

UNIT 509

UNIT 510



P:\cond projects T2003\T3070PCBWI\dwg\CONDO-sh 110 - 135 5th Fl.dwg 09/11/2003 10:05:50 AM EDT

**SURF CLUB II  
CONDOMINIUM**

SITUATED IN MATANZAS SHORES  
FLAGLER COUNTY, FLORIDA

**FIFTH FLOOR - UNIT 509 (North Wing)**



**TOMOKA ENGINEERING**

CIVIL ENGINEERING & LAND SURVEYING SINCE 1976  
DAYTONA BEACH FLAGLER/PALM COAST  
Main Office: 900 So. Ridgewood Ave., Daytona Beach, FL 32114  
Phone: 386-257-1500 Fax: 386-257-1501  
email: tomoka@tomoka-eng.com website: www.tomoka@tomoka-eng.com

DATE ISSUED: 07/23/2003

JOB # T3070PCBWI

SHEET 120 OF 213 SHEETS

0 10 20



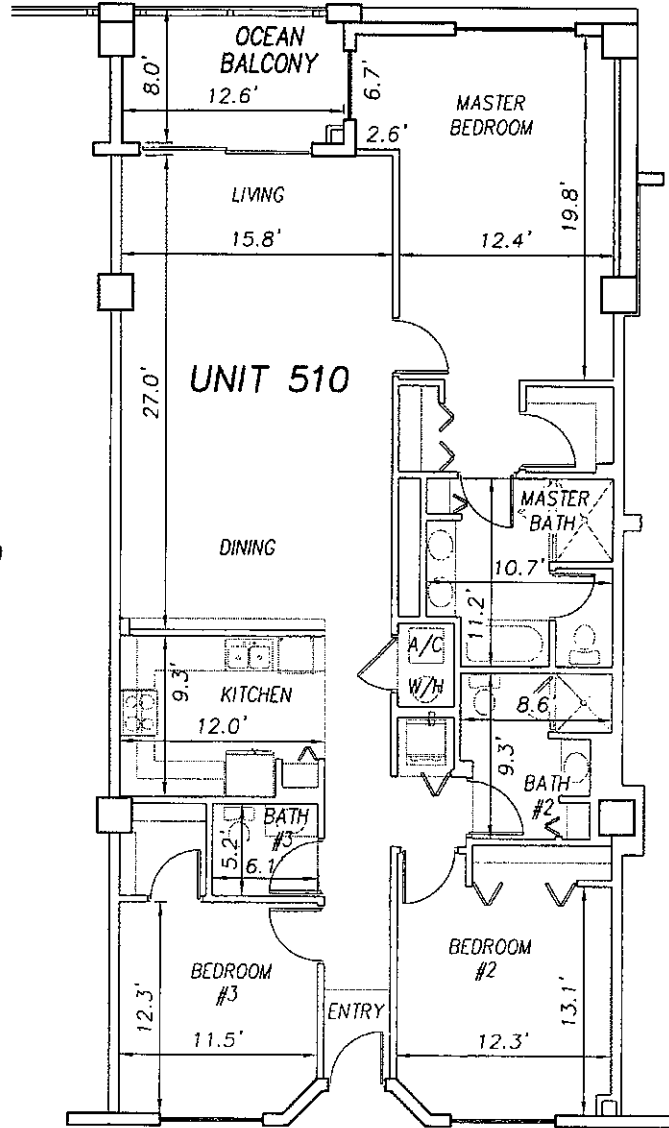
SCALE 1" = 10'

OFF REC 0983 PAGE 0282

EXHIBIT 'B'



UNIT 509



UNIT 511

CORRIDOR - C.E.

**SURF CLUB II  
CONDOMINIUM**

SITUATED IN MATANZAS SHORES  
FLAGLER COUNTY, FLORIDA

**FIFTH FLOOR - UNIT 510 (North Wing)**



**TOMOKA ENGINEERING**

CIVIL ENGINEERING & LAND SURVEYING SINCE 1976  
DAYTONA BEACH FLAGLER/PALM COAST  
Main Office 900 So. Ridgewood Ave., Daytona Beach, FL 32114  
Phone: 386-257-1800 Fax: 386-257-1801  
email: tomoka@tomoka-eng.com website: www.tomoka@tomoka-eng.com

DATE ISSUED: 07/23/2003

JOB # T3070PCBWI

SHEET 121 OF 213 SHEETS

P:\cond projects T2003\T3070PCBWI\dwg\CONDO-sh 110 - 135 5th Fl.dwg 09/11/2003 10:05:50 AM EDT

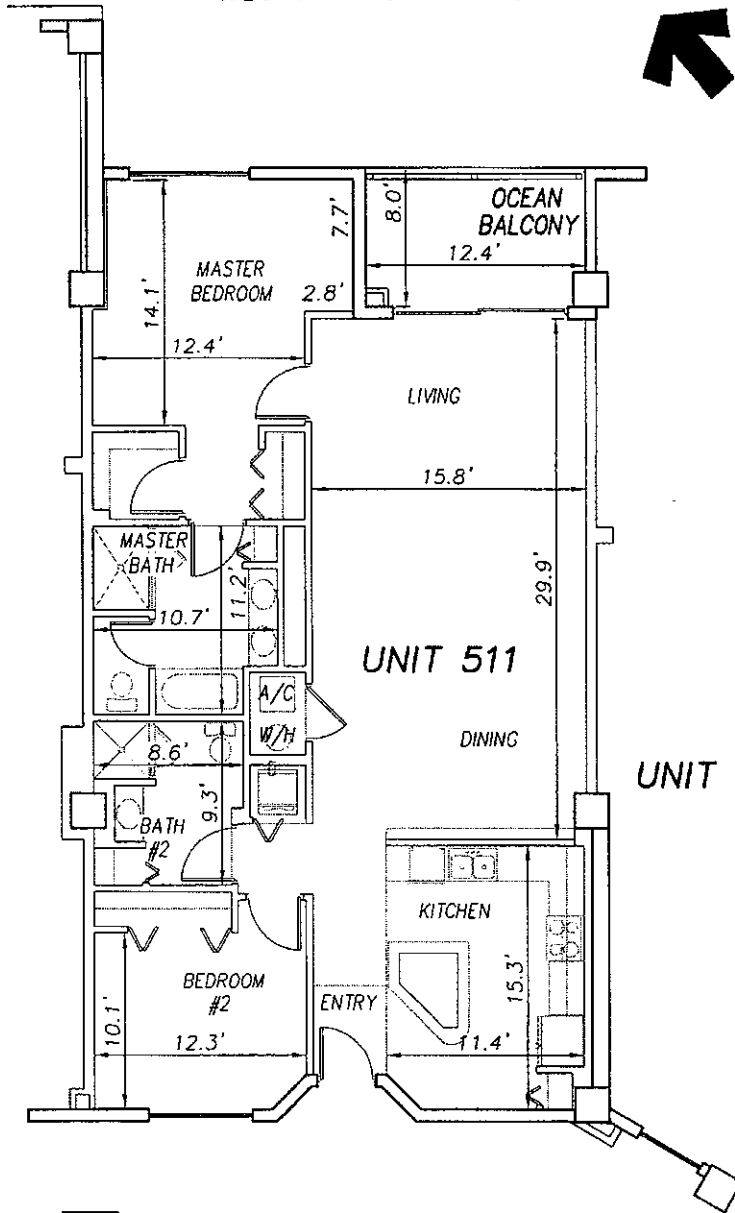
0 10 20

SCALE 1" = 10'

OFF REC 0983 PAGE 0283 EXHIBIT 'B'



UNIT 510



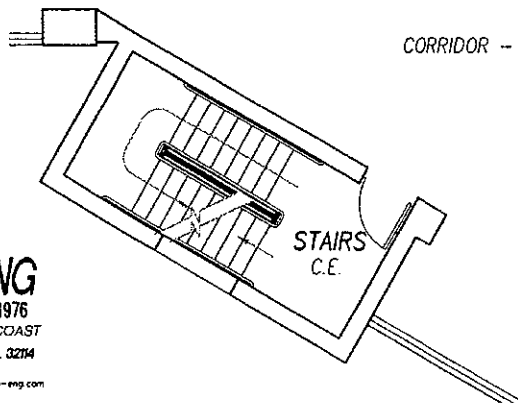
UNIT 512

**SURF CLUB II  
CONDOMINIUM**

SITUATED IN MATANZAS SHORES  
FLAGLER COUNTY, FLORIDA

**FIFTH FLOOR - UNIT 511 (North Wing)**

CORRIDOR - C.E.



**TOMOKA ENGINEERING**  
CIVIL ENGINEERING & LAND SURVEYING SINCE 1976  
DAYTONA BEACH FLAGLER/PALM COAST  
Main Office: 900 So. Ridgewood Ave., Daytona Beach, FL 32114  
Phone: 386-257-1600 Fax: 386-257-1601  
email: tomoka@tomoka-eng.com website: www.tomoka@tomoka-eng.com

DATE ISSUED: 07/23/2003

JOB # T3070PCBWI

SHEET 122 OF 213 SHEETS

P:\land projects T2003\T3070PCBWI\dwg\CONDO-sh 110 - 135 5th Fl.dwg 09/11/2003 10:05:50 AM EDT

0 10 20

SCALE 1" = 10'

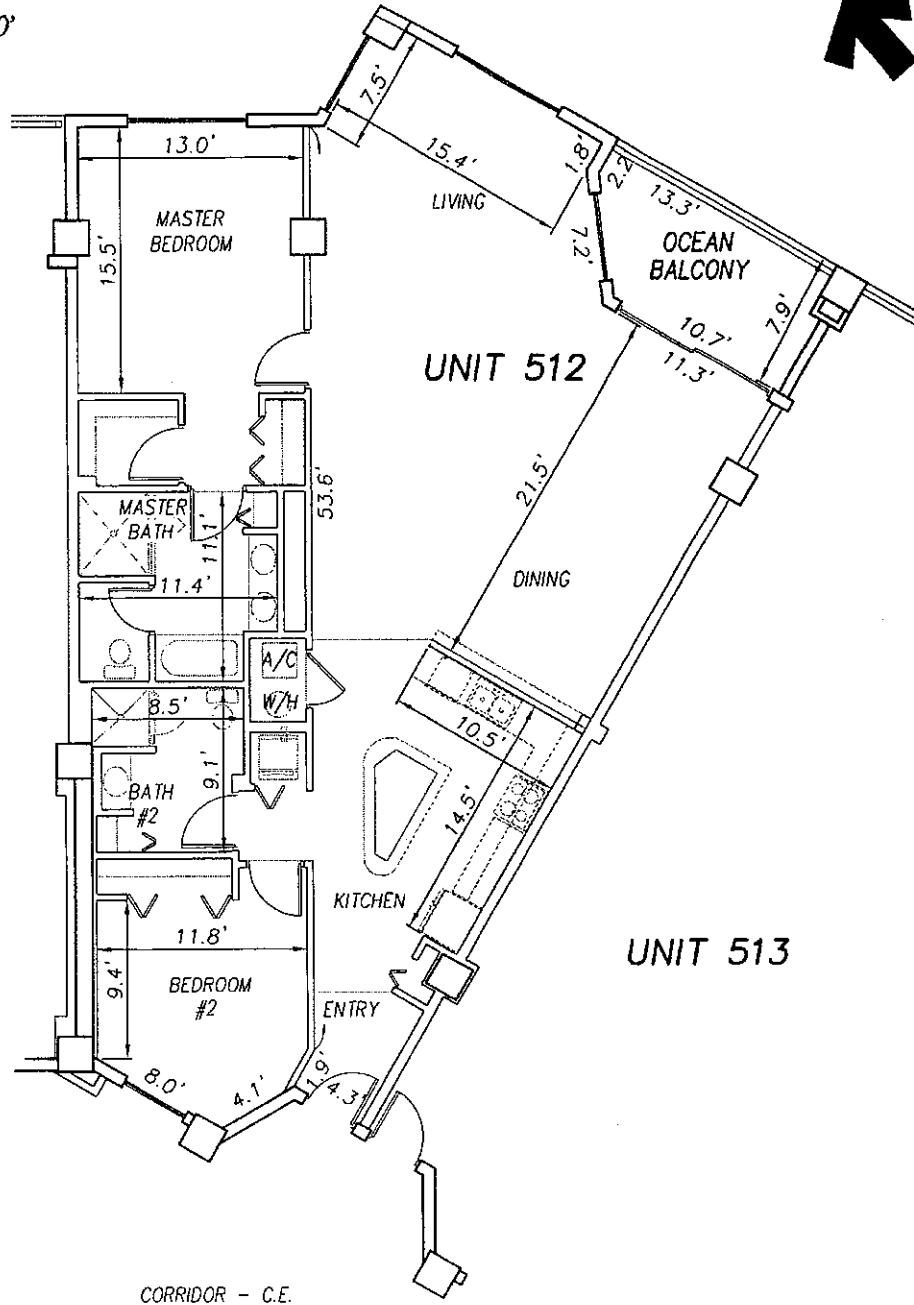
OFF REC 0983 PAGE 0284 EXHIBIT 'B'



UNIT 511

UNIT 512

UNIT 513



P:\land projects T2003\T3070PCBWI\dwg\CONDO-sh 110 - 135 5th Fl.dwg 09/11/2003 10:05:50 AM EDT

**SURF CLUB II  
CONDOMINIUM**  
SITUATED IN MATANZAS SHORES  
FLAGLER COUNTY, FLORIDA  
**FIFTH FLOOR - UNIT 512 (North Wing)**



**TOMOKA ENGINEERING**  
CIVIL ENGINEERING & LAND SURVEYING SINCE 1976  
DAYTONA BEACH FLAGLER/PALM COAST  
Main Office: 900 So. Ridgewood Ave., Daytona Beach, FL 32114  
Phone: 386-257-1600 Fax: 386-257-1601  
email: tomoka@tomoka-eng.com website: www.tomoka@tomoka-eng.com

DATE ISSUED: 07/23/2003

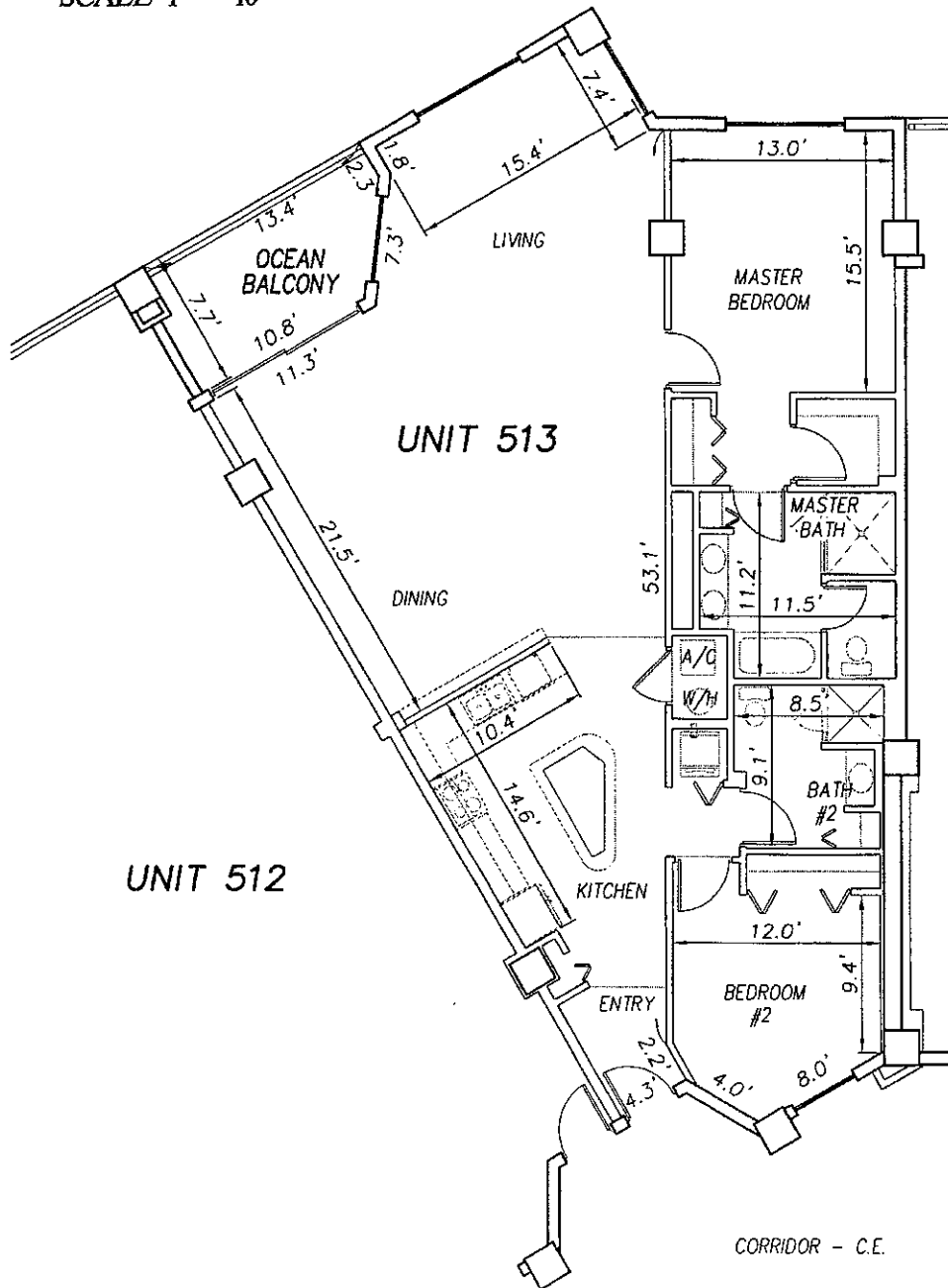
JOB # T3070PCBWI

SHEET 123 OF 213 SHEETS

0 10 20

SCALE 1" = 10'

OFF REC 0983 PAGE 0285 EXHIBIT 'B'



P:\cond\_projects T2003\T3070PCBW1\dwg\CONDO-sh 110 - 135 5th Fl.dwg 09/11/2003 10:05:50 AM EDT

**SURF CLUB II  
CONDOMINIUM**

SITUATED IN MATANZAS SHORES  
FLAGLER COUNTY, FLORIDA

**FIFTH FLOOR - UNIT 513 (South Wing)**



**TOMOKA ENGINEERING**

CIVIL ENGINEERING & LAND SURVEYING SINCE 1976  
DAYTONA BEACH FLAGLER/PALM COAST  
Main Office 900 So. Ridgewood Ave., Daytona Beach, FL 32114  
Phone: 386-257-1600 Fax: 386-257-1601  
email: tomoka@tomoka-eng.com website: www.tomoka@tomoka-eng.com

DATE ISSUED: 07/23/2003

JOB # T3070PCBW1

SHEET 124 OF 213 SHEETS

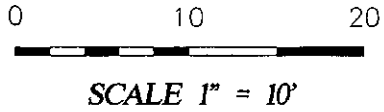
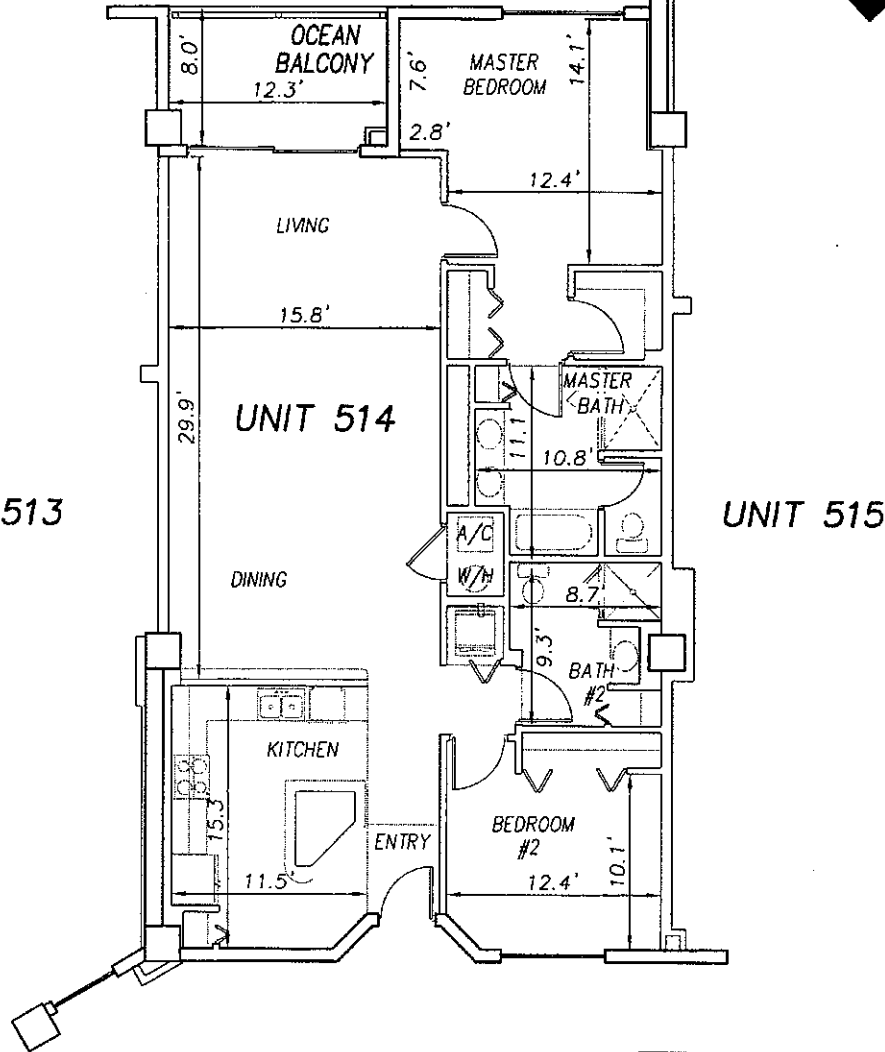


EXHIBIT 'B'



**SURF CLUB II  
CONDOMINIUM**  
SITUATED IN MATANZAS SHORES  
FLAGLER COUNTY, FLORIDA  
**FIFTH FLOOR - UNIT 514 (South Wing)**



**TOMOKA ENGINEERING**  
CIVIL ENGINEERING & LAND SURVEYING SINCE 1976  
DAYTONA BEACH FLAGLER/PALM COAST  
Main Office: 900 So. Ridgewood Ave., Daytona Beach, FL 32114  
Phone: 386-257-1600 Fax: 386-257-1601  
email: tomoko@tomoko-eng.com web site: www.tomoko@tomoko-eng.com

DATE ISSUED: 07/23/2003

JOB # T3070PCBWI

SHEET 125 OF 213 SHEETS

P:\land projects T2003\T3070PCBWI\dwg\CONDO-sh 110 - 135 5th Fl.dwg 09/11/2003 10:05:50 AM EDT

EXHIBIT 'B'

0 10 20

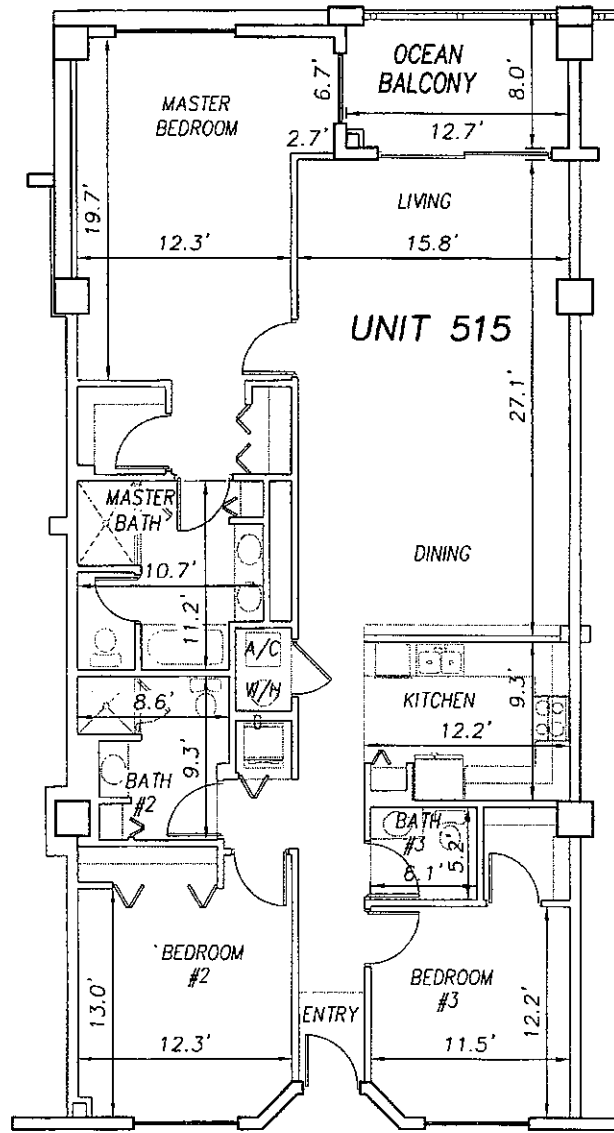
SCALE 1" = 10'



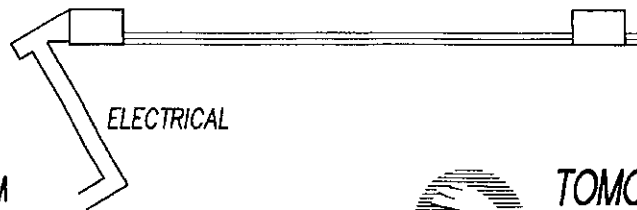
UNIT 514

UNIT 515

UNIT 516



CORRIDOR - C.E.



SURF CLUB II  
CONDOMINIUM

SITUATED IN MATANZAS SHORES  
FLAGLER COUNTY, FLORIDA

FIFTH FLOOR - UNIT 515 (South Wing)



**TOMOKA ENGINEERING**

CIVIL ENGINEERING & LAND SURVEYING SINCE 1976  
DAYTONA BEACH FLAGLER/PALM COAST  
Main Office: 900 So. Ridgewood Ave., Daytona Beach, FL 32114  
Phone: 386-257-1800 Fax: 386-257-1801  
email: tomoka@tomoka-eng.com website: www.tomoka@tomoka-eng.com

DATE ISSUED: 07/23/2003

JOB # T3070PCBWI

SHEET 126 OF 213 SHEETS

P:\cond projects\T3070PCBWI\dwg\CONDO-sh 110 - 135 5th Fl.dwg 09/11/2003 10:05:50 AM EDT

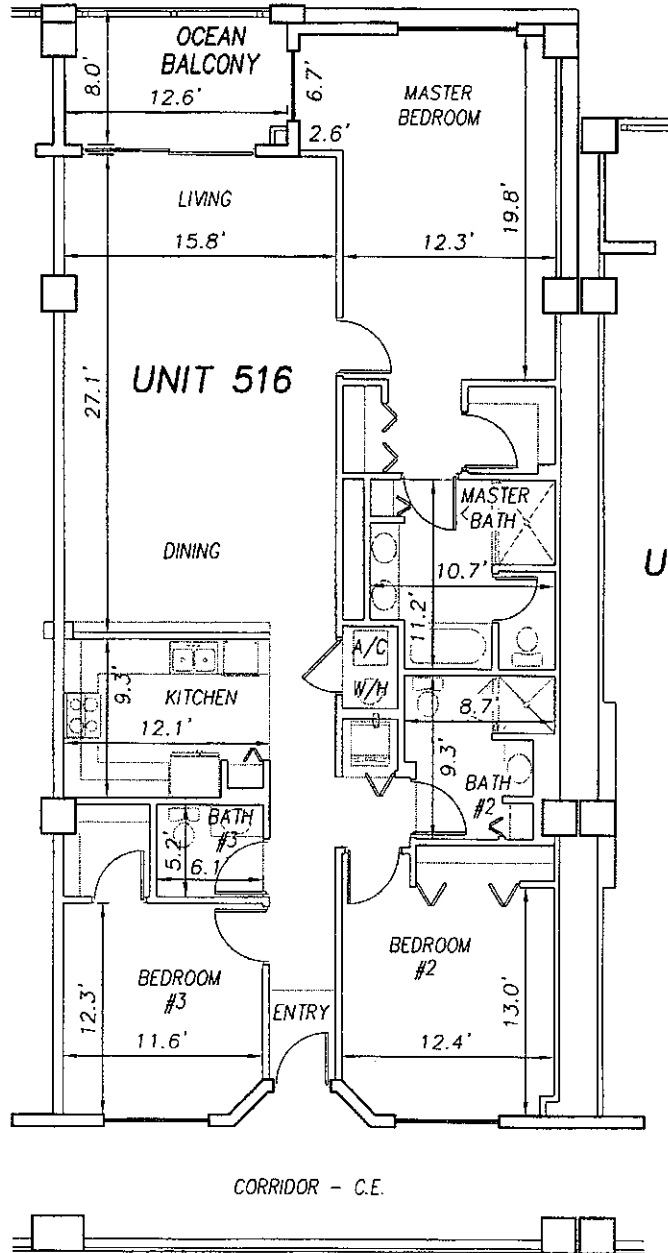


0 10 20

OFF REC 0983 PAGE 0288

EXHIBIT 'B'

SCALE 1" = 10'



UNIT 515

UNIT 517

**SURF CLUB II  
CONDOMINIUM**

SITUATED IN MATANZAS SHORES  
FLAGLER COUNTY, FLORIDA

**FIFTH FLOOR - UNIT 516 (South Wing)**



**TOMOKA ENGINEERING**

CIVIL ENGINEERING & LAND SURVEYING SINCE 1976  
DAYTONA BEACH FLAGLER/PALM COAST  
Main Office: 900 So. Ridgewood Ave., Daytona Beach, FL 32114  
Phone: 386-257-1600 Fax: 386-257-1601  
email: tomoka@tomoka-eng.com website: www.tomoka@tomoka-eng.com

DATE ISSUED: 07/23/2003

JOB # T3070PCBWI

SHEET 127 OF 213 SHEETS

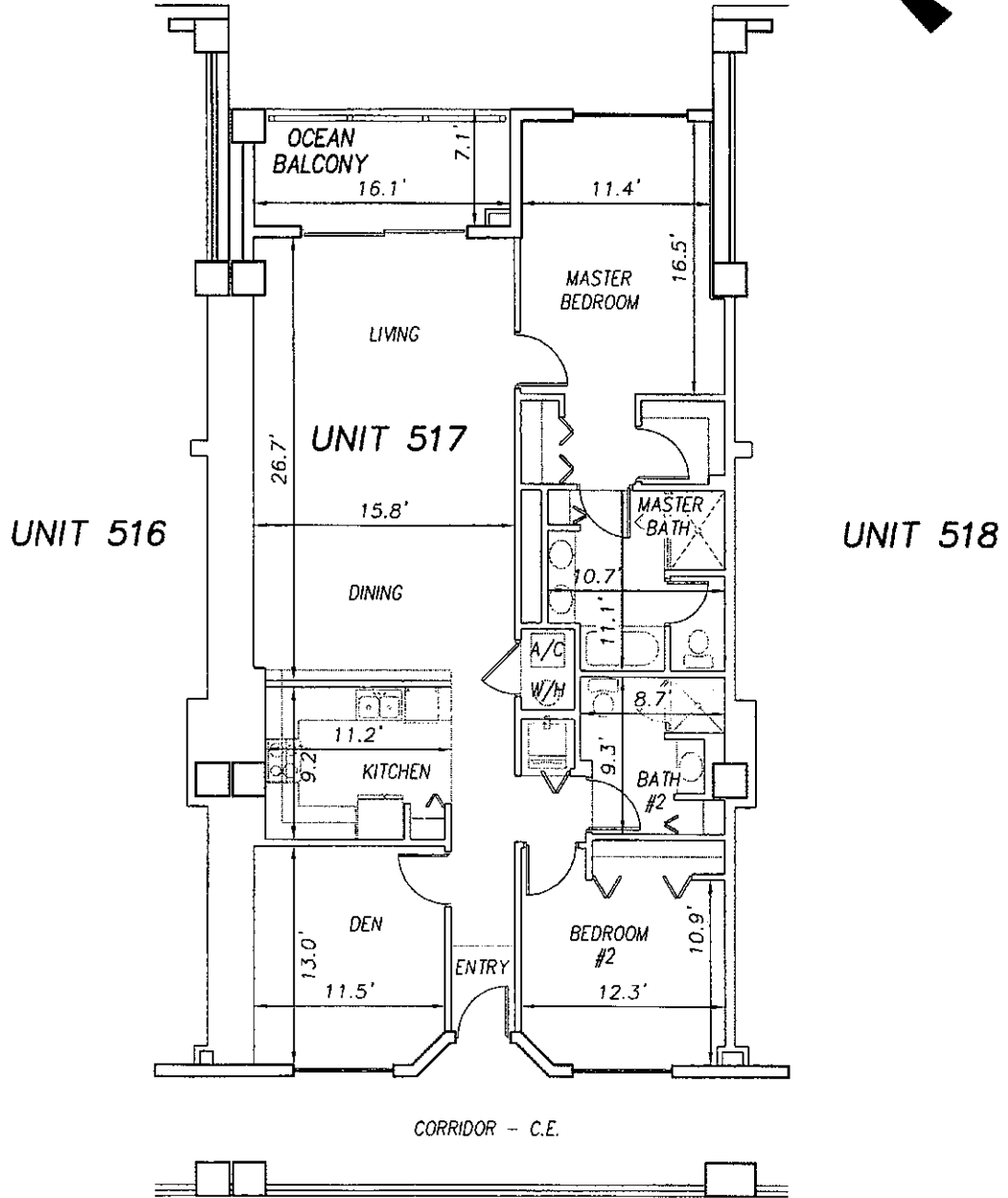
P:\cond projects T2003\T3070PCBWI\dwg\CONDO-sh 110 - 135 5th Fl.dwg 09/11/2003 10:05:50 AM EDT

0 10 20

OFF REC 0983 PAGE 0289

EXHIBIT 'B'

SCALE 1" = 10'



P:\land projects T2003\T3070PCBWI\dwg\CONDO-sh 110 - 135 5th Fl.dwg 08/11/2003 10:05:50 AM EDT

**SURF CLUB II  
CONDOMINIUM**  
SITUATED IN MATANZAS SHORES  
FLAGLER COUNTY, FLORIDA  
**FIFTH FLOOR - UNIT 517 (South Wing)**



**TOMOKA ENGINEERING**  
CIVIL ENGINEERING & LAND SURVEYING SINCE 1976  
DAYTONA BEACH FLAGLER/PALM COAST  
Main Office: 900 So. Ridgewood Ave., Daytona Beach, FL 32114  
Phone: 386-257-1600 Fax: 386-257-1601  
email: tomoka@tomoka-eng.com website: www.tomoka@tomoka-eng.com

DATE ISSUED: 07/23/2003

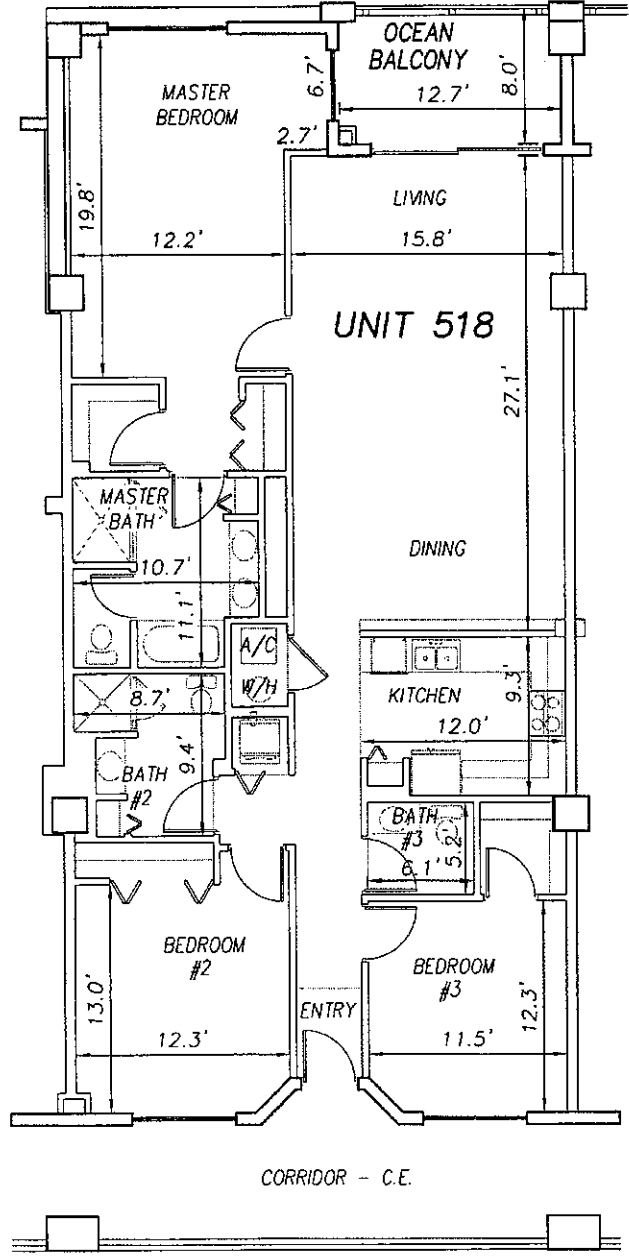
JOB # T3070PCBWI

SHEET 128 OF 213 SHEETS

0 10 20

SCALE 1" = 10'

OFF REC 0983 PAGE 0290 EXHIBIT 'B'



UNIT 517

UNIT 519

CORRIDOR - C.E.

P:\land projects T2003\T3070PCBWI\dwg\CONDO-sh 110 - 135 5th Fl.dwg 09/11/2003 10:05:50 AM EDT

**SURF CLUB II  
CONDOMINIUM**  
SITUATED IN MATANZAS SHORES  
FLAGLER COUNTY, FLORIDA  
**FIFTH FLOOR - UNIT 518 (South Wing)**



**TOMOKA ENGINEERING**  
CIVIL ENGINEERING & LAND SURVEYING SINCE 1976  
DAYTONA BEACH FLAGLER/PALM COAST  
Main Office: 900 So. Ridgewood Ave., Daytona Beach, FL 32114  
Phone: 386-257-1800 Fax: 386-257-1801  
email: tomoka@tomoka-eng.com website: www.tomoka@tomoka-eng.com

DATE ISSUED: 07/23/2003

JOB # T3070PCBWI

SHEET 129 OF 213 SHEETS

0 10 20

SCALE 1" = 10'

OFF REC 0983 PAGE 0291

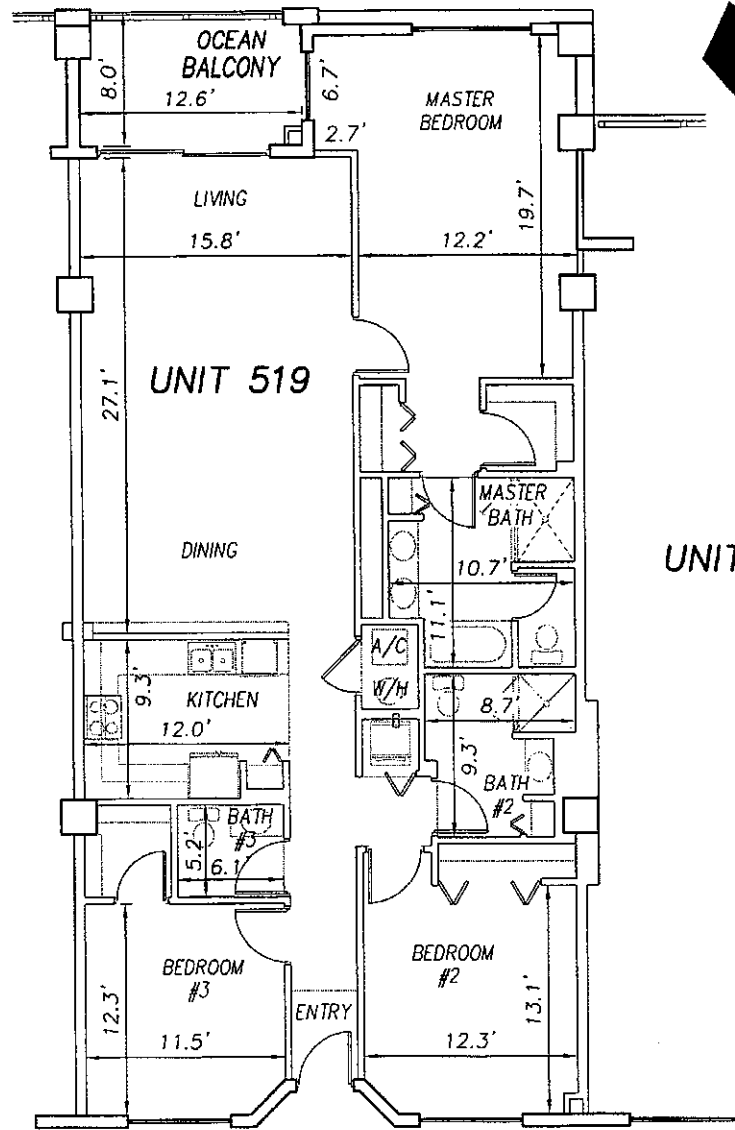
EXHIBIT 'B'



UNIT 518

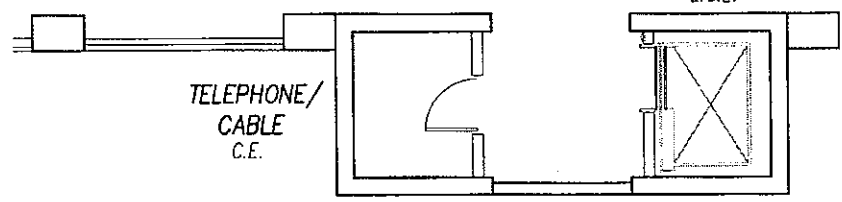
UNIT 519

UNIT 520



CORRIDOR - C.E.

ELEVATOR #3  
L.C.E.



TELEPHONE/  
CABLE  
C.E.

**SURF CLUB II  
CONDOMINIUM**

SITUATED IN MATANZAS SHORES  
FLAGLER COUNTY, FLORIDA

**FIFTH FLOOR - UNIT 519 (South Wing)**



**TOMOKA ENGINEERING**

CIVIL ENGINEERING & LAND SURVEYING SINCE 1976  
DAYTONA BEACH FLAGLER/PALM COAST

Main Office 900 So. Ridgewood Ave., Daytona Beach, FL 32114  
Phone: 386-257-1600 Fax: 386-257-1801  
email: tomoka@tomoka-eng.com website: www.tomoka@tomoka-eng.com

DATE ISSUED: 07/23/2003

JOB # T3070PCBWI

SHEET 130 OF 213 SHEETS

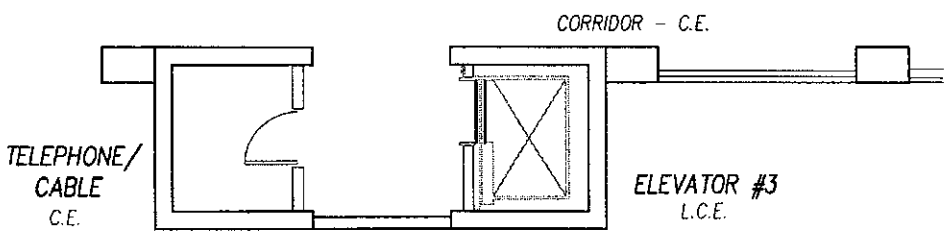
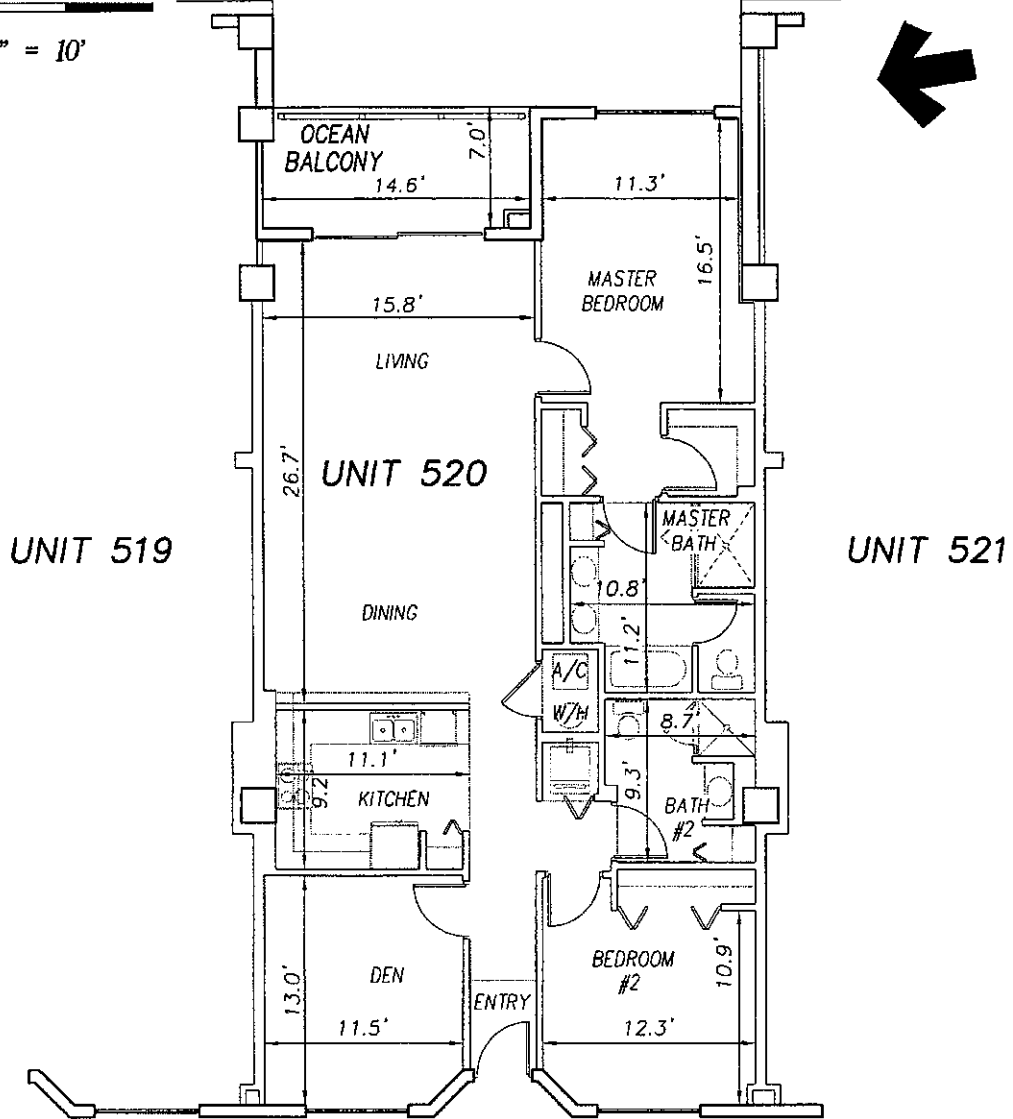
P:\land projects T2003\T3070PCBWI\dwg\CONDO-sh 110 - 135 5th Fl.dwg 09/11/2003 10:05:50 AM EDT

0 10 20

SCALE 1" = 10'

OFF REC 0983 PAGE 0292

EXHIBIT 'B'



**SURF CLUB II  
CONDOMINIUM**

SITUATED IN MATANZAS SHORES  
FLAGLER COUNTY, FLORIDA

**FIFTH FLOOR - UNIT 520 (South Wing)**



**TOMOKA ENGINEERING**  
CIVIL ENGINEERING & LAND SURVEYING SINCE 1976  
DAYTONA BEACH FLAGLER/PALM COAST  
Main Office: 800 So. Ridgewood Ave., Daytona Beach, FL 32114  
Phone: 386-257-1800 Fax: 386-257-1801  
email: tomoka@tomoka-eng.com web site: www.tomoka@tomoka-eng.com

DATE ISSUED: 07/23/2003

JOB # T3070PCBW1

SHEET 131 OF 213 SHEETS

P:\cond projects T2003\T3070PCBW1\dwg\CONDO-sh 110 - 135 5th Fl.dwg 09/11/2003 10:05:50 AM EDT

0 10 20

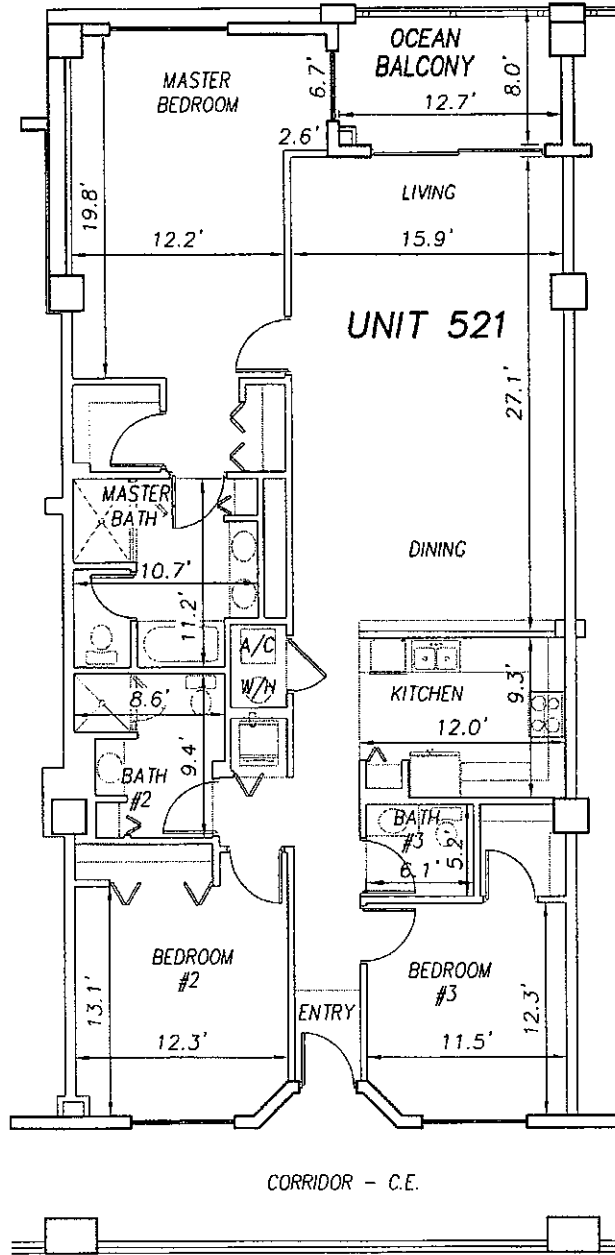
SCALE 1" = 10'

OFF REC 0983 PAGE 0293

EXHIBIT 'B'



UNIT 520



UNIT 522

P:\land projects T2003\T3070PCBW\dwg\CONDO-sh 110 - 135 5th Fl.dwg 09/11/2003 10:05:50 AM EDT

**SURF CLUB II  
CONDOMINIUM**  
SITUATED IN MATANZAS SHORES  
FLAGLER COUNTY, FLORIDA  
**FIFTH FLOOR - UNIT 521 (South Wing)**



**TOMOKA ENGINEERING**  
CIVIL ENGINEERING & LAND SURVEYING SINCE 1976  
DAYTONA BEACH FLAGLER/PALM COAST  
Main Office: 900 So. Ridgewood Ave., Daytona Beach, FL 32114  
Phone: 386-257-1600 Fax: 386-257-1601  
email: tomoka@tomoka-eng.com website: www.tomoka@tomoka-eng.com

DATE ISSUED: 07/23/2003

JOB # T3070PCBW1

SHEET 132 OF 213 SHEETS

0 10 20

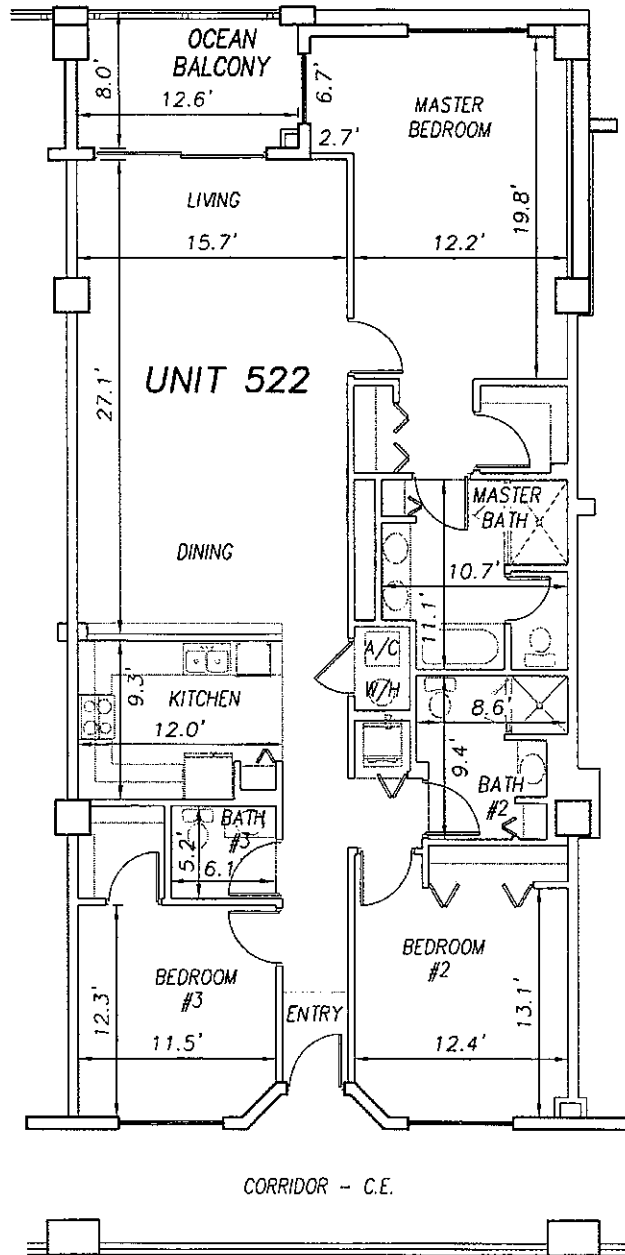
SCALE 1" = 10'

OFF REC 0983 PAGE 0294

EXHIBIT 'B'



UNIT 521



UNIT 523

**SURF CLUB II  
CONDOMINIUM**

SITUATED IN MATANZAS SHORES  
FLAGLER COUNTY, FLORIDA

**FIFTH FLOOR - UNIT 522 (South Wing)**



**TOMOKA ENGINEERING**

CIVIL ENGINEERING & LAND SURVEYING SINCE 1976  
DAYTONA BEACH FLAGLER/PALM COAST  
Main Office: 900 So. Ridgewood Ave., Daytona Beach, FL 32114  
Phone: 386-257-1600 Fax: 386-257-1601  
email: tomoka@tomoka-eng.com website: www.tomoka@tomoka-eng.com

DATE ISSUED: 07/23/2003

JOB # T3070PCBWI

SHEET 133 OF 213 SHEETS

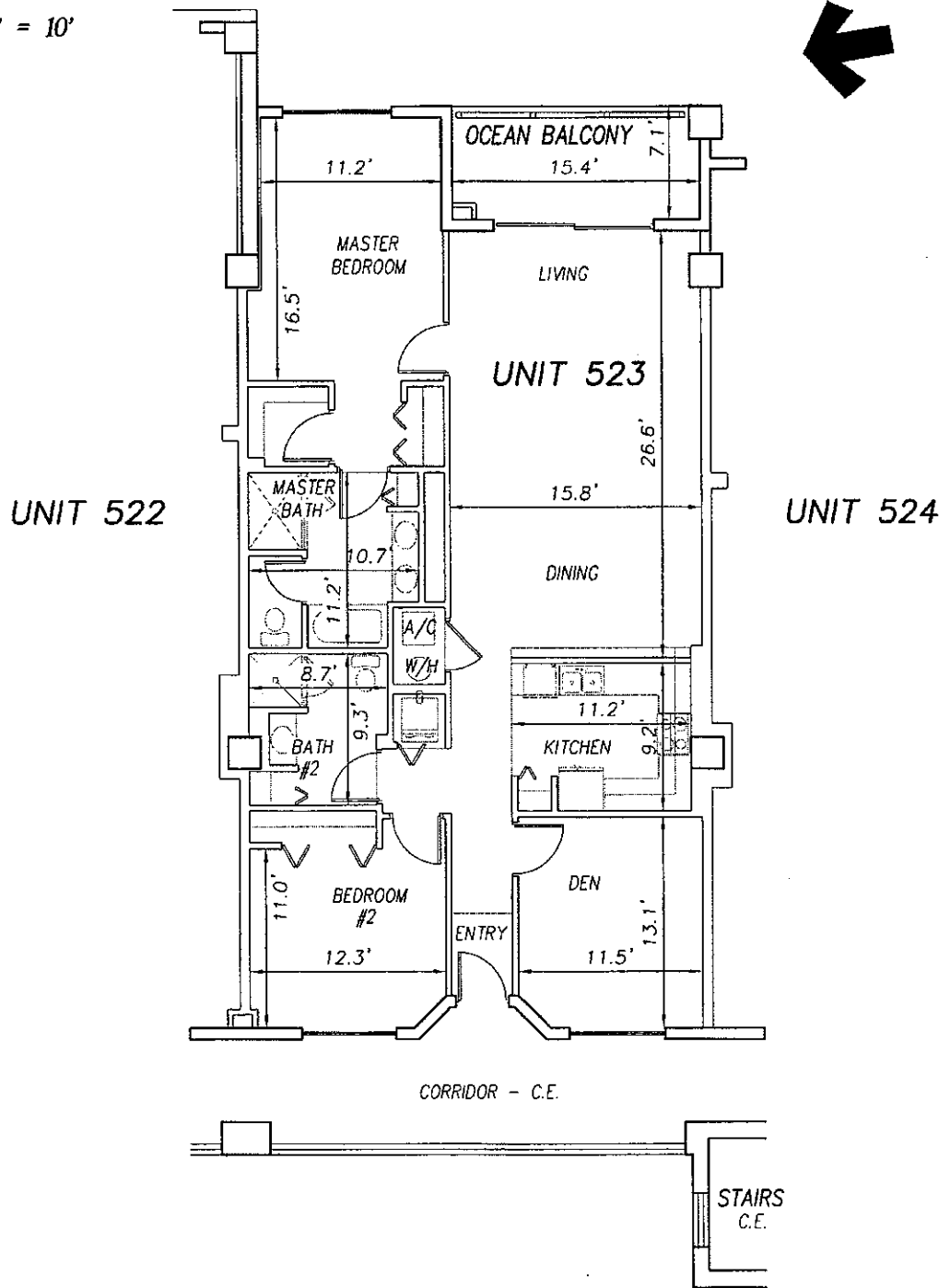
P:\land projects T2003\T3070PCBWI\dwg\CONDO-sh 110 - 135 5th Fl.dwg 09/11/2003 10:05:50 AM EDT

0 10 20

SCALE 1" = 10'

OFF REC 0983 PAGE 0295

EXHIBIT 'B'



P:\land\_projects\T2003\T3070PCBWA\dwg\CONDO-sh 110 - 135 5th Fl.dwg 09/11/2003 10:05:50 AM EDT

**SURF CLUB II**  
**CONDOMINIUM**  
 SITUATED IN MATANZAS SHORES  
 FLAGLER COUNTY, FLORIDA  
**FIFTH FLOOR - UNIT 523 (South Wing)**



**TOMOKA ENGINEERING**  
 CIVIL ENGINEERING & LAND SURVEYING SINCE 1976  
 DAYTONA BEACH FLAGLER/PALM COAST  
 Main Office: 900 So. Ridgewood Ave., Daytona Beach, FL 32114  
 Phone: 386-257-1600 Fax: 386-257-1601  
 email: tomoka@tomoka-eng.com website: www.tomoka@tomoka-eng.com

DATE ISSUED: 07/23/2003

JOB # T3070PCBWI

SHEET 134 OF 213 SHEETS



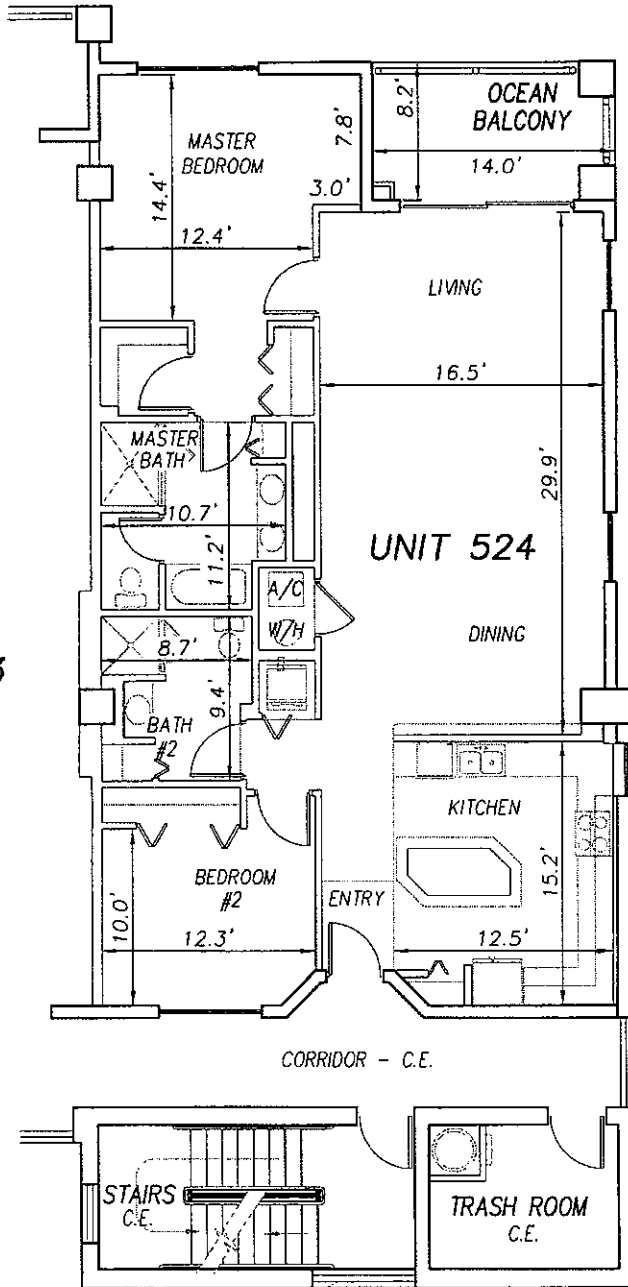
0 10 20

SCALE 1" = 10'

OFF REC 0983 PAGE 0296 EXHIBIT 'B'



UNIT 523



**SURF CLUB II  
CONDOMINIUM**

SITUATED IN MATANZAS SHORES  
FLAGLER COUNTY, FLORIDA

**FIFTH FLOOR - UNIT 524 (South Wing)**



**TOMOKA ENGINEERING**

CIVIL ENGINEERING & LAND SURVEYING SINCE 1976  
DAYTONA BEACH FLAGLER/PALM COAST

Main Office: 900 So. Ridgewood Ave., Daytona Beach, FL 32114  
Phone: 386-257-1600 Fax: 386-257-1601  
email: tomoka@tomoka-eng.com website: www.tomoka@tomoka-eng.com

LB #2222

DATE ISSUED: 07/23/2003

JOB # T3070PCBWI

SHEET 135 OF 213 SHEETS

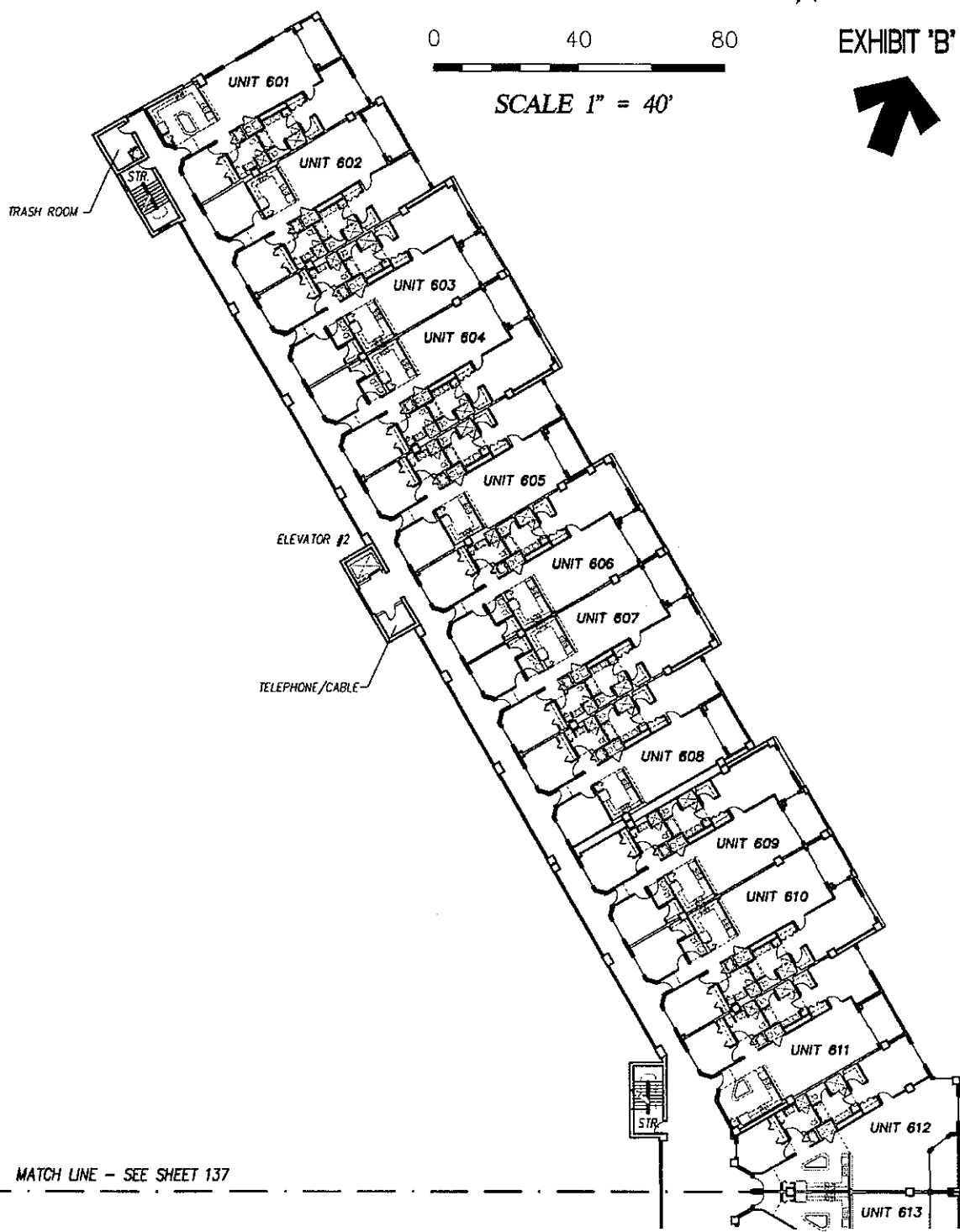
P:\cond projects T2003\T3070PCBWI\dwg\CONDO-sh 110 - 135 5th Fl.dwg 09/11/2003 10:05:50 AM EDT

0 40 80



SCALE 1" = 40'

EXHIBIT 'B'



MATCH LINE - SEE SHEET 137

**SURF CLUB II  
CONDOMINIUM**

SITUATED IN MATANZAS SHORES  
FLAGLER COUNTY, FLORIDA

**SIXTH FLOOR - OVERALL LAYOUT (North Wing)**



**TOMOKA ENGINEERING**  
CIVIL ENGINEERING & LAND SURVEYING SINCE 1976  
DAYTONA BEACH FLAGLER/PALM COAST  
Main Office: 900 So. Ridgewood Ave., Daytona Beach, FL 32114  
Phone: 386-257-1600 Fax: 386-257-1601  
www: www.tomoka-engineering.com

DATE ISSUED: 07/23/2003

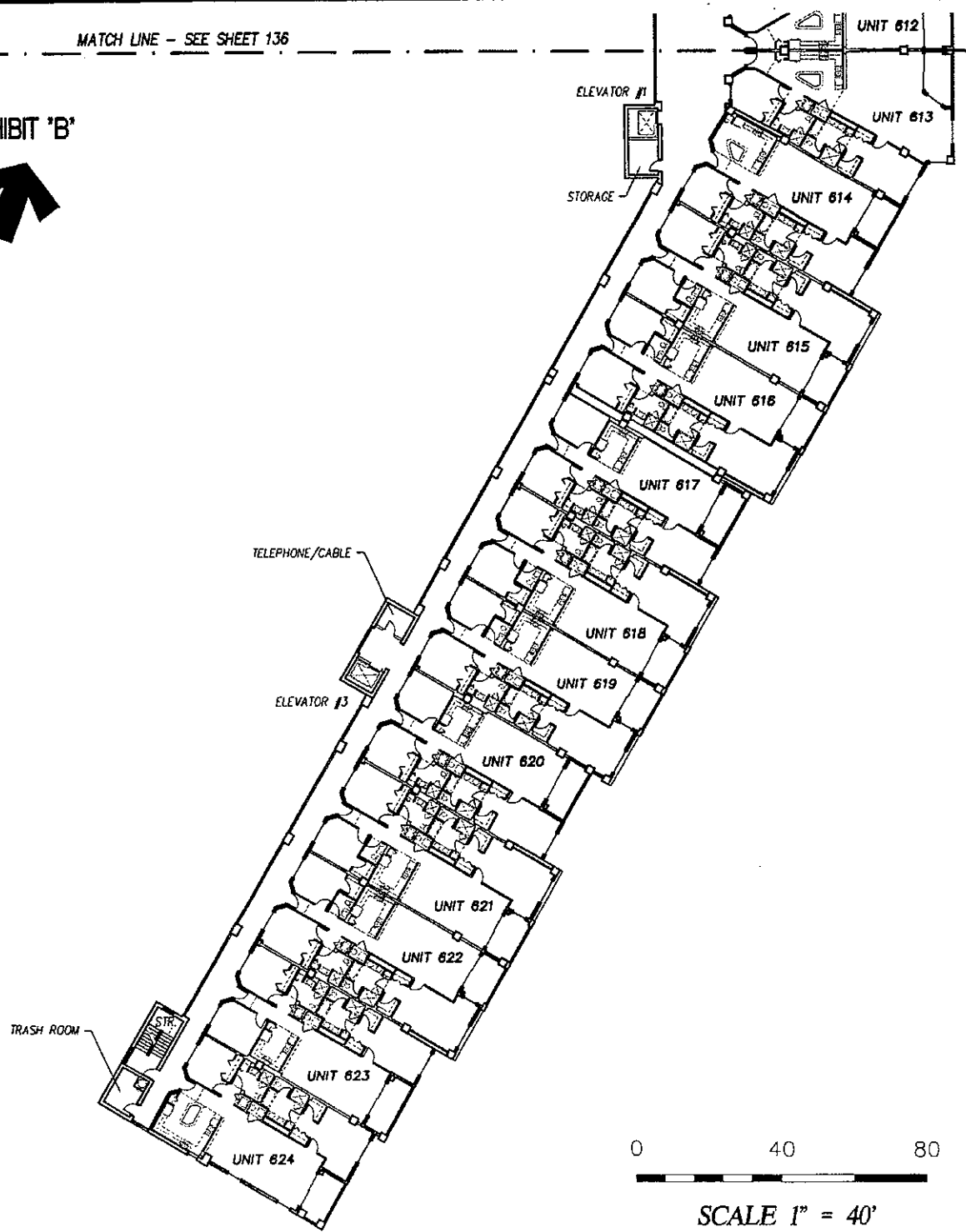
JOB # T3070PCBWI

SHEET 136 OF 213 SHEETS

P:\cond projects T2003\T3070PCBWI\dwg\CONDO-sh 136 - 161 6th Fl.dwg 09/11/2003 10:16:35 AM EDT

MATCH LINE - SEE SHEET 136

EXHIBIT 'B'



**SURF CLUB II  
CONDOMINIUM**

SITUATED IN MATANZAS SHORES  
FLAGLER COUNTY, FLORIDA

**SIXTH FLOOR - OVERALL LAYOUT (South Wing)**



**TOMOKA ENGINEERING**  
 CIVIL ENGINEERING & LAND SURVEYING SINCE 1978  
 DAYTONA BEACH FLAGLER/PALM COAST  
 Main Office: 900 So. Ridgewood Ave., Daytona Beach, FL 32114  
 Phone: 386-257-1600 Fax: 386-257-1601  
 email: tomoka@tomoka-eng.com website: www.tomoka@tomoka-eng.com

DATE ISSUED: 07/23/2003

JOB # T3070PCBWI

SHEET 137 OF 213 SHEETS

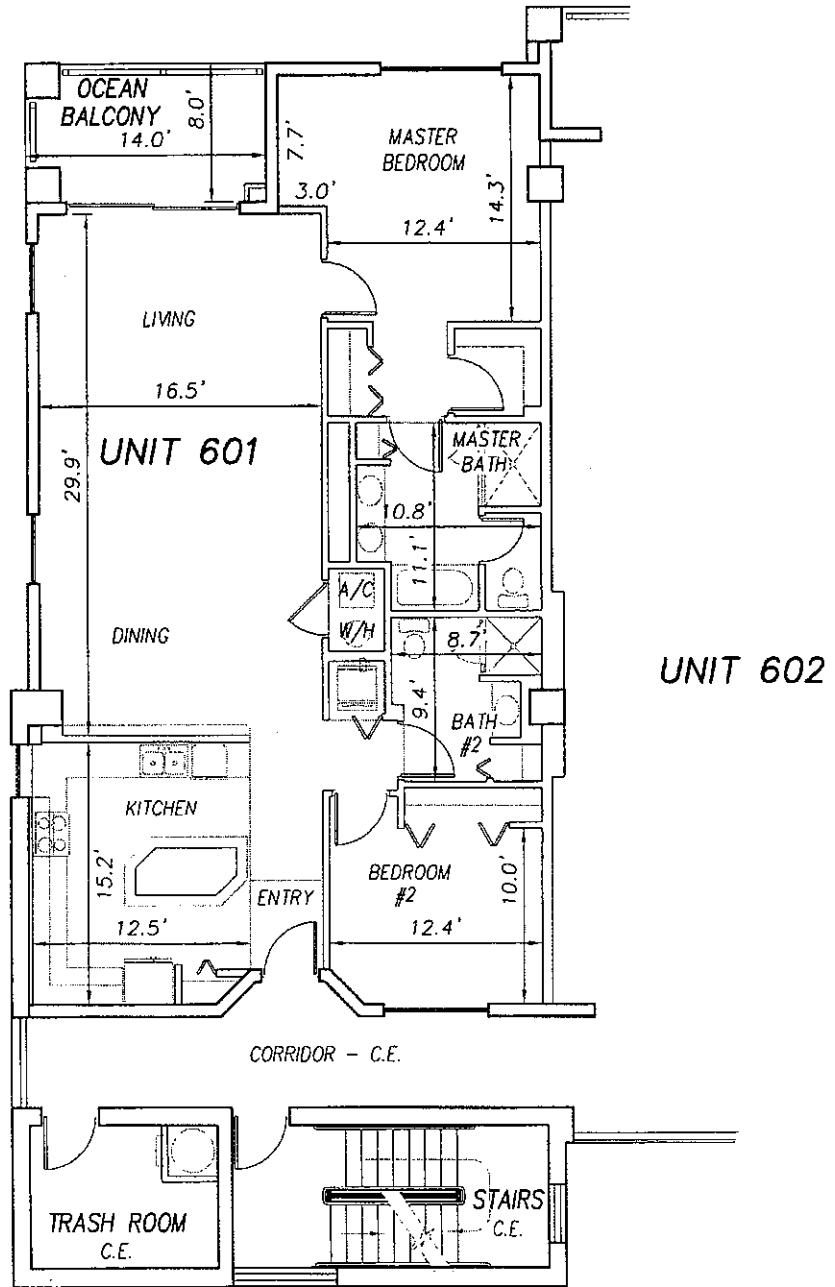
P:\land projects T2003\T3070PCBWI\dwg\CONDO-sh 136 - 161 6th Fl.dwg 09/11/2003 10:16:35 AM EDT

0 10 20



SCALE 1" = 10'

OFF REC 0983 PAGE 0299 EXHIBIT 'B'



P:\cond projects T2003\T3070PCBW\dwg\CONDO-sh 136 - 161 6th Fl.dwg 09/11/2003 10:16:35 AM EDT

**SURF CLUB II  
CONDOMINIUM**  
SITUATED IN MATANZAS SHORES  
FLAGLER COUNTY, FLORIDA  
**SIXTH FLOOR - UNIT 601 (North Wing)**



**TOMOKA ENGINEERING**  
CIVIL ENGINEERING & LAND SURVEYING SINCE 1976  
DAYTONA BEACH FLAGLER/PALM COAST  
Main Office: 900 So. Ridgewood Ave., Daytona Beach, FL 32114  
Phone: 386-257-1600 Fax: 386-257-1601  
email: tomoka@tomoka-eng.com website: www.tomoka@tomoka-eng.com

DATE ISSUED: 07/23/2003

JOB # T3070PCBW1

SHEET 138 OF 213 SHEETS

0 10 20

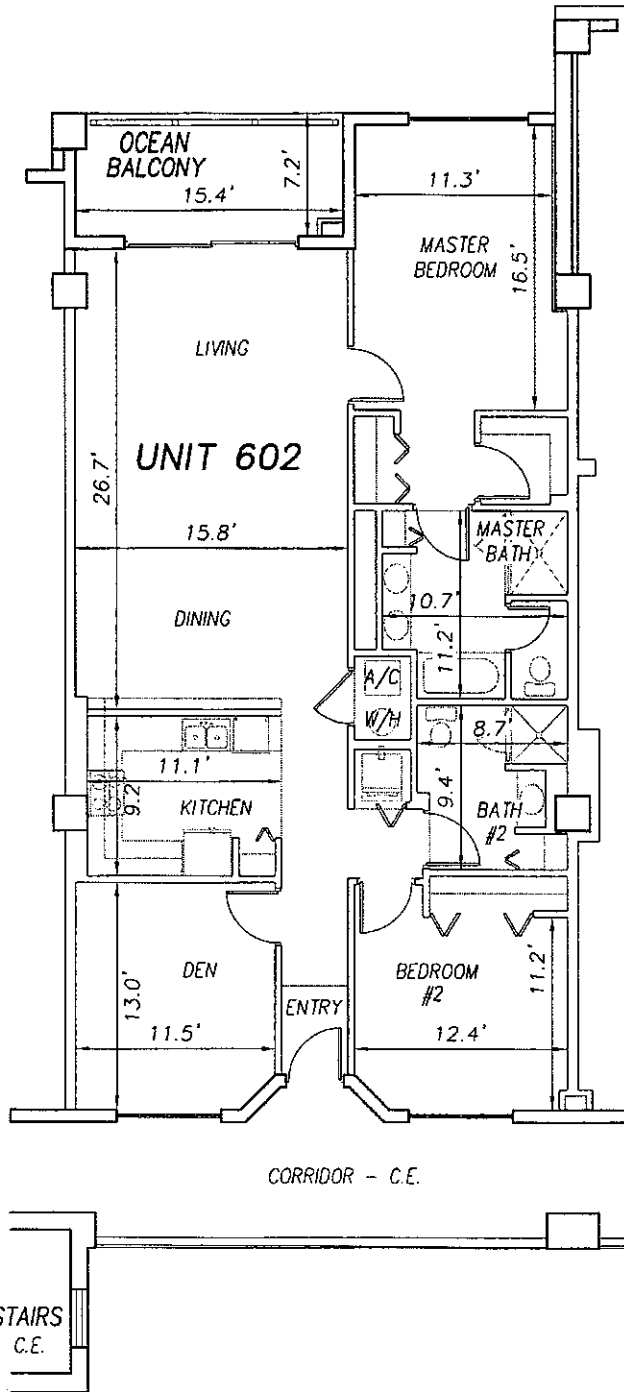
OFF REC 0983 PAGE 0300 EXHIBIT 'B'

SCALE 1" = 10'



UNIT 601

UNIT 603



P:\land projects T2003\T3070PCBW\dwg\CONDO-sh 136 - 161 6th Fl.dwg 09/11/2003 10:16:35 AM EDT

**SURF CLUB II  
CONDOMINIUM**  
SITUATED IN MATANZAS SHORES  
FLAGLER COUNTY, FLORIDA  
**SIXTH FLOOR - UNIT 602 (North Wing)**



**TOMOKA ENGINEERING**  
CIVIL ENGINEERING & LAND SURVEYING SINCE 1976  
DAYTONA BEACH FLAGLER/PALM COAST  
Main Office: 900 So. Ridgewood Ave., Daytona Beach, FL 32114  
Phone: 386-257-1600 Fax: 386-257-1601  
email: tomoka@tomoka-eng.com website: www.tomoka@tomoka-eng.com

DATE ISSUED: 07/23/2003

JOB # T3070PCBW1

SHEET 139 OF 213 SHEETS