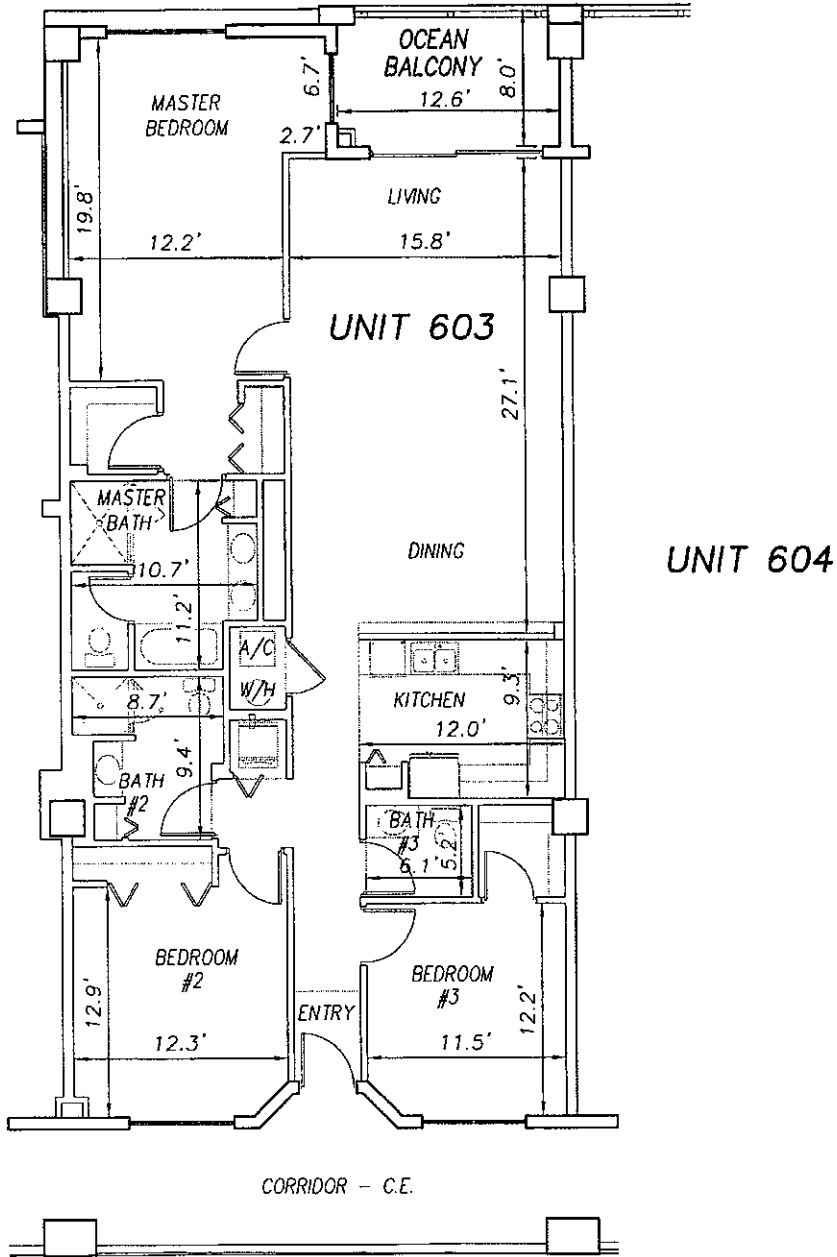


0 10 20

SCALE 1" = 10'

OFF REC 0983 PAGE 0301

EXHIBIT 'B'



P:\land projects T2003\T3070PCBWI\dwg\CONDO-sh 136 - 161 6th Fl.dwg 09/11/2003 10:16:35 AM EDT

**SURF CLUB II**  
**CONDOMINIUM**  
 SITUATED IN MATANZAS SHORES  
 FLAGLER COUNTY, FLORIDA  
**SIXTH FLOOR - UNIT 603 (North Wing)**



**TOMOKA ENGINEERING**  
 CIVIL ENGINEERING & LAND SURVEYING SINCE 1976  
 DAYTONA BEACH FLAGLER/PALM COAST  
 Mch Office: 900 So. Ridgewood Ave., Daytona Beach, FL 32114  
 Phone: 386-257-1800 Fax: 386-257-1501  
 email: tomoka@tomoka-eng.com website: www.tomoka@tomoka-eng.com

DATE ISSUED: 07/23/2003

JOB # T3070PCBWI

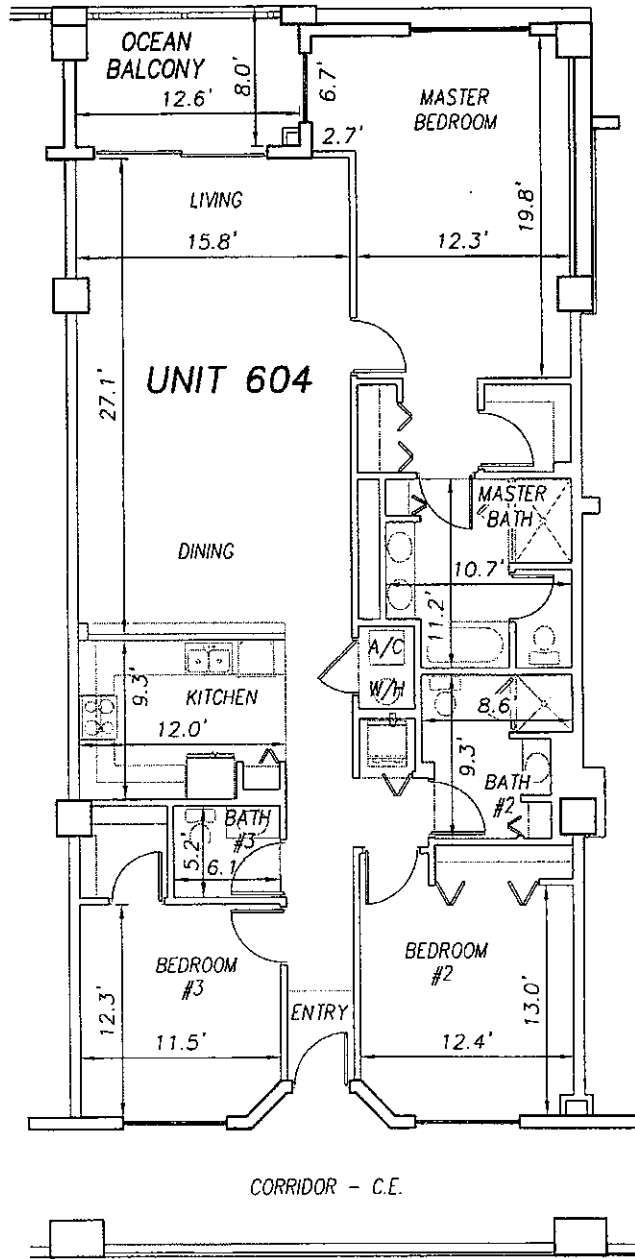
SHEET 140 OF 213 SHEETS

0 10 20

SCALE 1" = 10'

OFF REC 0983 PAGE 0302

EXHIBIT 'B'



UNIT 603

UNIT 604

UNIT 605

**SURF CLUB II  
CONDOMINIUM**

SITUATED IN MATANZAS SHORES  
FLAGLER COUNTY, FLORIDA

**SIXTH FLOOR - UNIT 604 (North Wing)**



**TOMOKA ENGINEERING**  
 CIVIL ENGINEERING & LAND SURVEYING SINCE 1976  
 DAYTONA BEACH FLAGLER/PALM COAST  
 Main Office: 900 So. Ridgewood Ave., Daytona Beach, FL 32114  
 Phone: 386-257-1600 Fax: 386-257-1601  
 e-mail: tomoka@tomoka-eng.com website: www.tomoka@tomoka-eng.com

DATE ISSUED: 07/23/2003

JOB # T3070PCBWI

SHEET 141 OF 213 SHEETS

P:\land projects T2003\T3070PCBWI\dwg\CONDO-sh 136 - 161 6th Fl.dwg 09/11/2003 10:16:35 AM EDT

0 10 20

SCALE 1" = 10'

OFF REC 0983 PAGE 0303

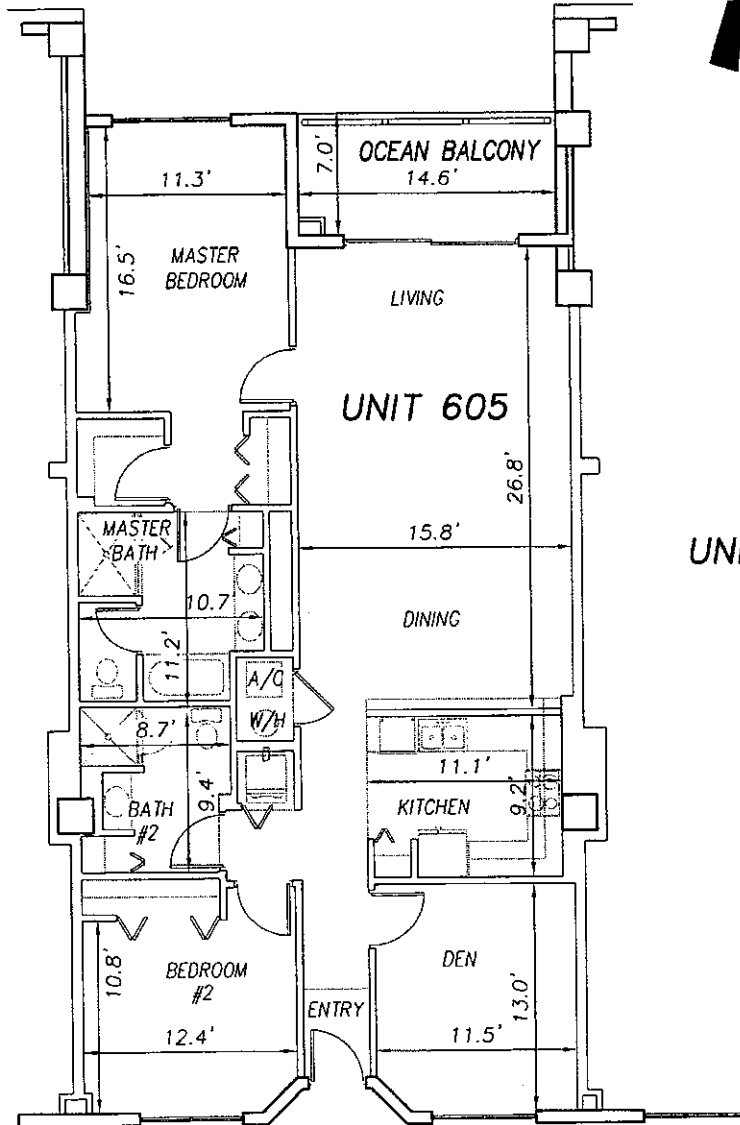
EXHIBIT 'B'



UNIT 604

UNIT 605

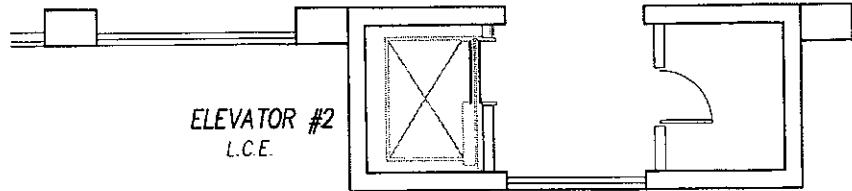
UNIT 606



CORRIDOR - C.E.

TELEPHONE/CABLE C.E.

ELEVATOR #2 L.C.E.



**SURF CLUB II  
CONDOMINIUM**

SITUATED IN MATANZAS SHORES  
FLAGLER COUNTY, FLORIDA

**SIXTH FLOOR - UNIT 605 (North Wing)**



**TOMOKA ENGINEERING**  
CIVIL ENGINEERING & LAND SURVEYING SINCE 1976  
DAYTONA BEACH FLAGLER/PALM COAST  
Main Office: 600 So. Ridgewood Ave., Daytona Beach, FL 32114  
Phone: 386-257-1600 Fax: 386-257-1801  
e-mail: tomoka@tomoka-eng.com website: www.tomoka@tomoka-eng.com

DATE ISSUED: 07/23/2003

JOB # T3070PCBW1

SHEET 142 OF 213 SHEETS

P:\land projects T2003\T3070PCBW1\dwg\CONDO-sh 136 - 161 6th Fl.dwg 09/11/2003 10:16:35 AM EDT

0 10 20

SCALE 1" = 10'

OFF REC 0983 PAGE 0304

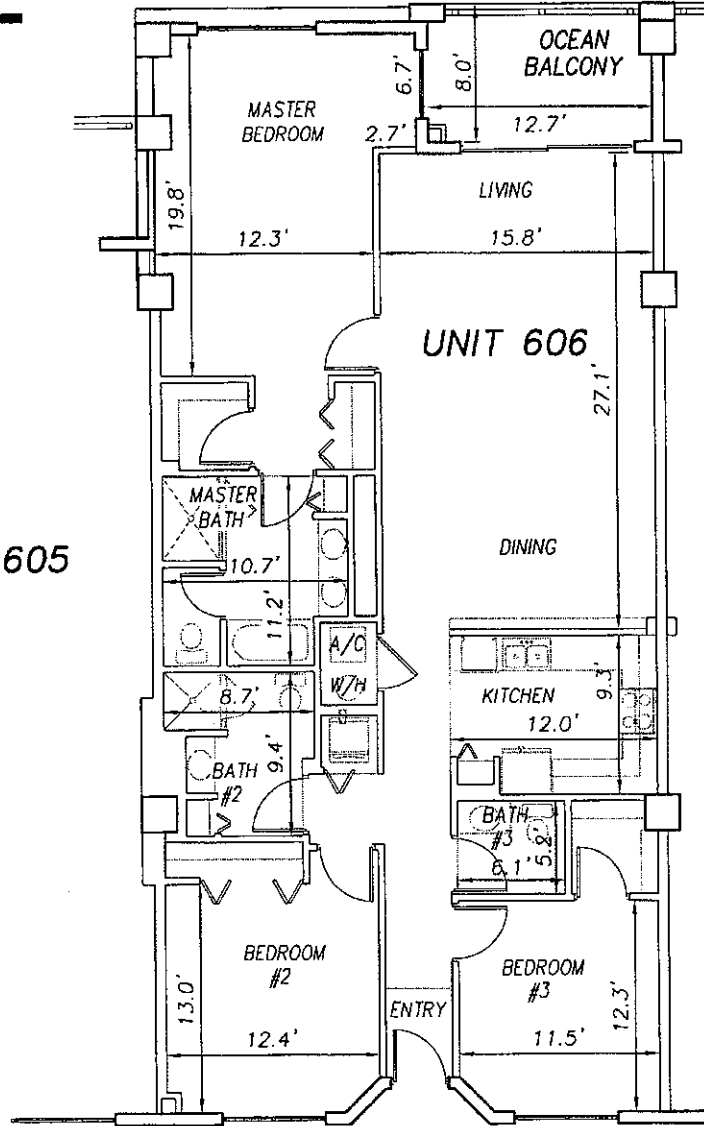
EXHIBIT 'B'



UNIT 605

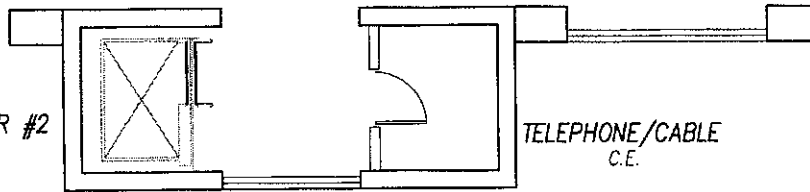
UNIT 606

UNIT 607



CORRIDOR - C.E.

ELEVATOR #2  
L.C.E.



TELEPHONE/CABLE  
C.E.

**SURF CLUB II  
CONDOMINIUM**

SITUATED IN MATANZAS SHORES  
FLAGLER COUNTY, FLORIDA

**SIXTH FLOOR - UNIT 606 (North Wing)**



**TOMOKA ENGINEERING**

CIVIL ENGINEERING & LAND SURVEYING SINCE 1976  
DAYTONA BEACH FLAGLER/PALM COAST  
Main Office: 900 So. Ridgewood Ave., Daytona Beach, FL 32114  
Phone: 386-257-1600 Fax: 386-257-1601  
e-mail: tomoka@tomoka-eng.com website: www.tomoka@tomoka-eng.com

DATE ISSUED: 07/23/2003

JOB # T3070PCBWI

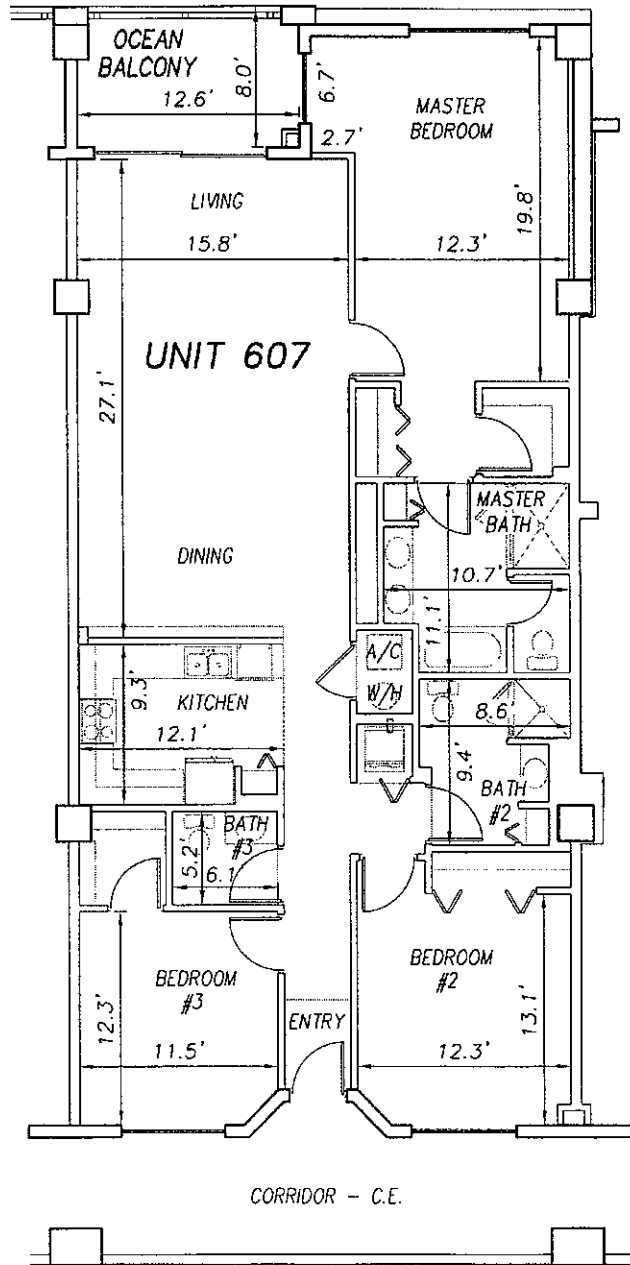
SHEET 143 OF 213 SHEETS

P:\cond projects T2003\T3070PCBWI\dwg\CONDO--sh 136 - 161 6th Fl.dwg 09/11/2003 10:16:35 AM EDT

0 10 20

SCALE 1" = 10'

OFF REC 0983 PAGE 0305 EXHIBIT 'B'



UNIT 606

UNIT 607

UNIT 608

**SURF CLUB II  
CONDOMINIUM**

SITUATED IN MATANZAS SHORES  
FLAGLER COUNTY, FLORIDA

**SIXTH FLOOR - UNIT 607 (North Wing)**



**TOMOKA ENGINEERING**

CIVIL ENGINEERING & LAND SURVEYING SINCE 1976  
DAYTONA BEACH FLAGLER/PALM COAST

Main Office: 900 So. Ridgewood Ave., Daytona Beach, FL 32114  
Phone: 386-257-1600 Fax: 386-257-1601  
email: tomoka@tomoka-eng.com website: www.tomoka@tomoka-eng.com

DATE ISSUED: 07/23/2003

JOB # T3070PCBW1

SHEET 144 OF 213 SHEETS

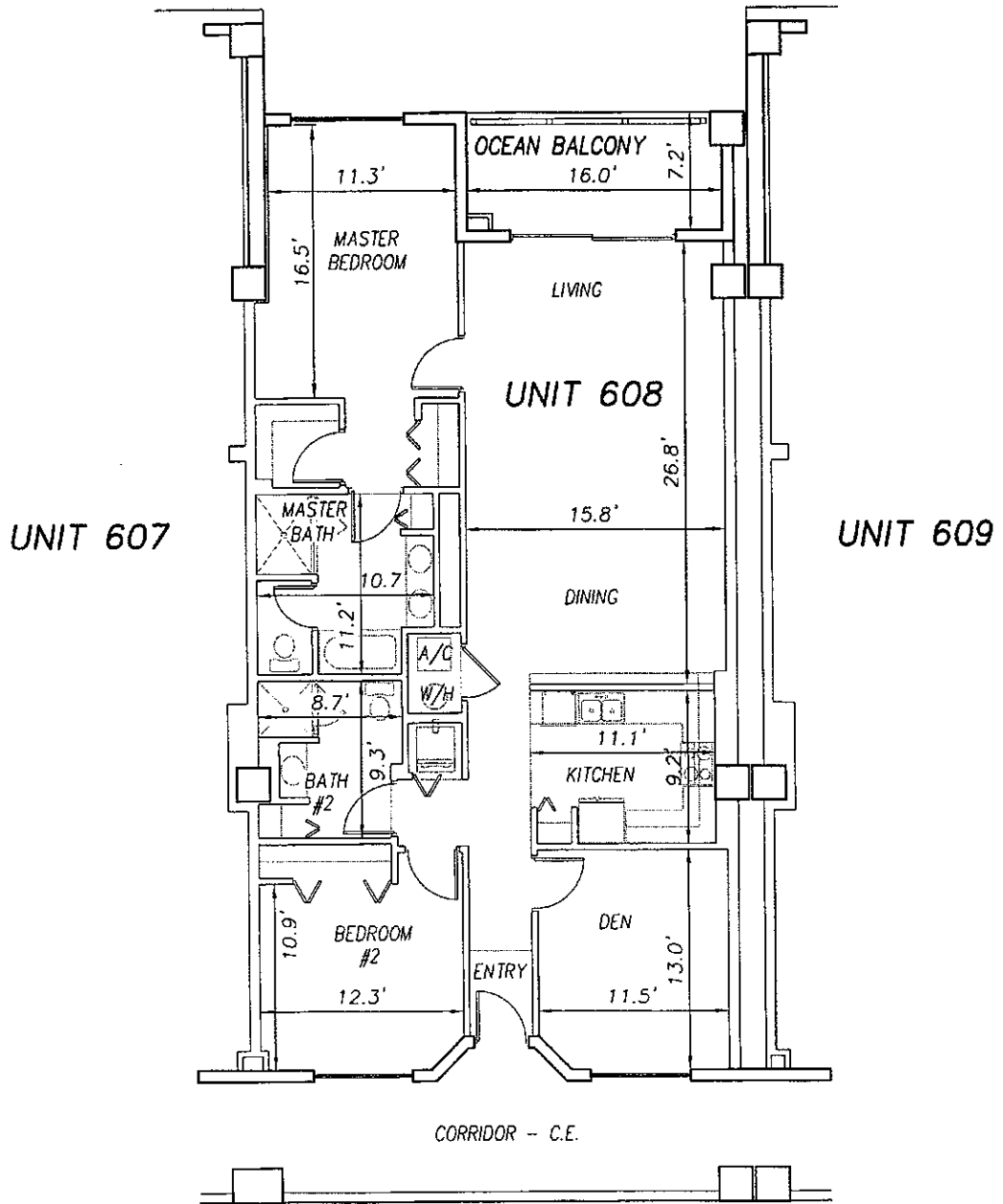
P:\land projects T2003\T3070PCBW1.dwg\CONDO-sh 1.36 - 161 6th Fl.dwg 09/11/2003 10:16:35 AM EDT

0 10 20

SCALE 1" = 10'

OFF REC 0983 PAGE 0306

EXHIBIT 'B'



P:\cond projects T2003\T3070PCBWI\dwg\CONDO-sh 136 - 161 6th Fl.dwg 09/11/2003 10:16:35 AM EDT

**SURF CLUB II**  
**CONDOMINIUM**  
 SITUATED IN MATANZAS SHORES  
 FLAGLER COUNTY, FLORIDA  
**SIXTH FLOOR - UNIT 608 (North Wing)**



**TOMOKA ENGINEERING**  
 CIVIL ENGINEERING & LAND SURVEYING SINCE 1976  
 DAYTONA BEACH FLAGLER/PALM COAST  
 Main Office: 900 So. Ridgewood Ave., Daytona Beach, FL 32114  
 Phone: 386-257-1800 Fax: 386-257-1801  
 email: tomoka@tomoka-eng.com website: www.tomoka@tomoka-eng.com

DATE ISSUED: 07/23/2003

JOB # T3070PCBWI

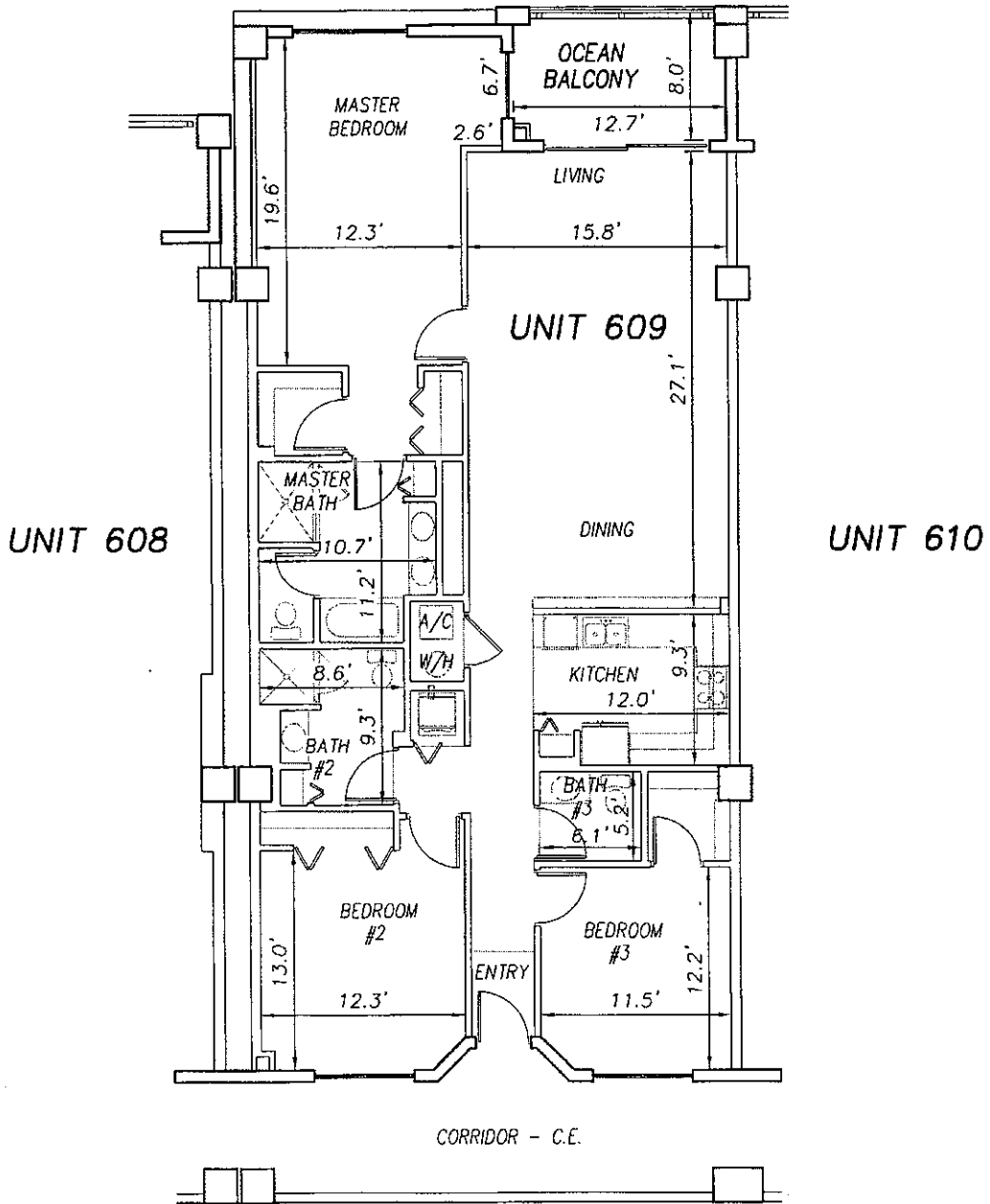
SHEET 145 OF 213 SHEETS

0 10 20

SCALE 1" = 10'

OFF REC 0983 PAGE 0307

EXHIBIT 'B'



UNIT 608

UNIT 610

**SURF CLUB II  
CONDOMINIUM**

SITUATED IN MATANZAS SHORES  
FLAGLER COUNTY, FLORIDA

**SIXTH FLOOR - UNIT 609 (North Wing)**



LB #2237

**TOMOKA ENGINEERING**

CIVIL ENGINEERING & LAND SURVEYING SINCE 1976  
DAYTONA BEACH FLAGLER/PALM COAST  
Main Office: 900 So. Ridgewood Ave., Daytona Beach, FL 32114  
Phone: 386-257-1600 Fax: 386-257-1601  
email: tomoka@tomoka-eng.com website: www.tomoka@tomoka-eng.com

DATE ISSUED: 07/23/2003

JOB # T3070PCBW1

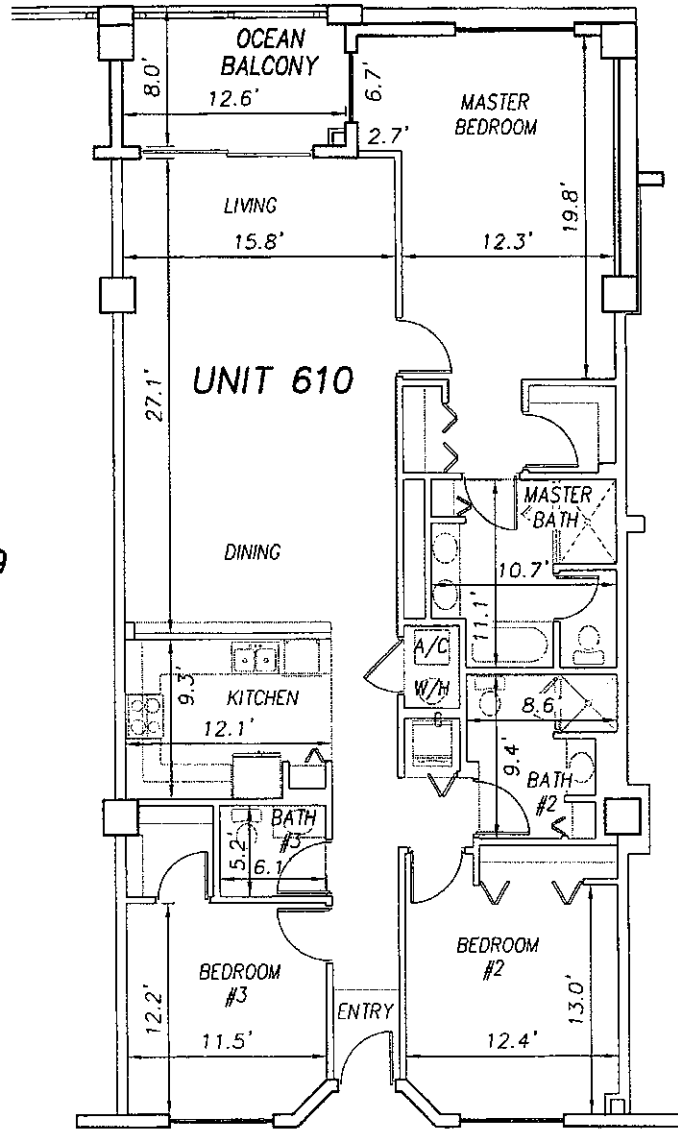
SHEET 146 OF 213 SHEETS

P:\land projects T2003\T3070PCBW1.dwg\CONDO-sh 136 - 161 6th Fl.dwg 09/11/2003 10:16:35 AM EDT

0 10 20

SCALE 1" = 10'

OFF REC 0983 PAGE 0308 EXHIBIT 'B'



UNIT 609

UNIT 610

UNIT 611

CORRIDOR - C.E.

SURF CLUB II  
CONDOMINIUM

SITUATED IN MATANZAS SHORES  
FLAGLER COUNTY, FLORIDA

SIXTH FLOOR - UNIT 610 (North Wing)



**TOMOKA ENGINEERING**

CIVIL ENGINEERING & LAND SURVEYING SINCE 1976  
DAYTONA BEACH FLAGLER/PALM COAST

Main Office: 900 So. Ridgewood Ave., Daytona Beach, FL 32114  
Phone: 386-257-1600 Fax: 386-257-1601  
email: tomoka@tomoka-eng.com website: www.tomoka@tomoka-eng.com

LB #2132

DATE ISSUED: 07/23/2003

JOB # T3070PCBW1

SHEET 147 OF 213 SHEETS

P:\land projects T2003\T3070PCBW1\dwg\CONDO-sh 136 - 161 6th Fl.dwg 09/11/2003 10:16:35 AM EDT



0 10 20

SCALE 1" = 10'

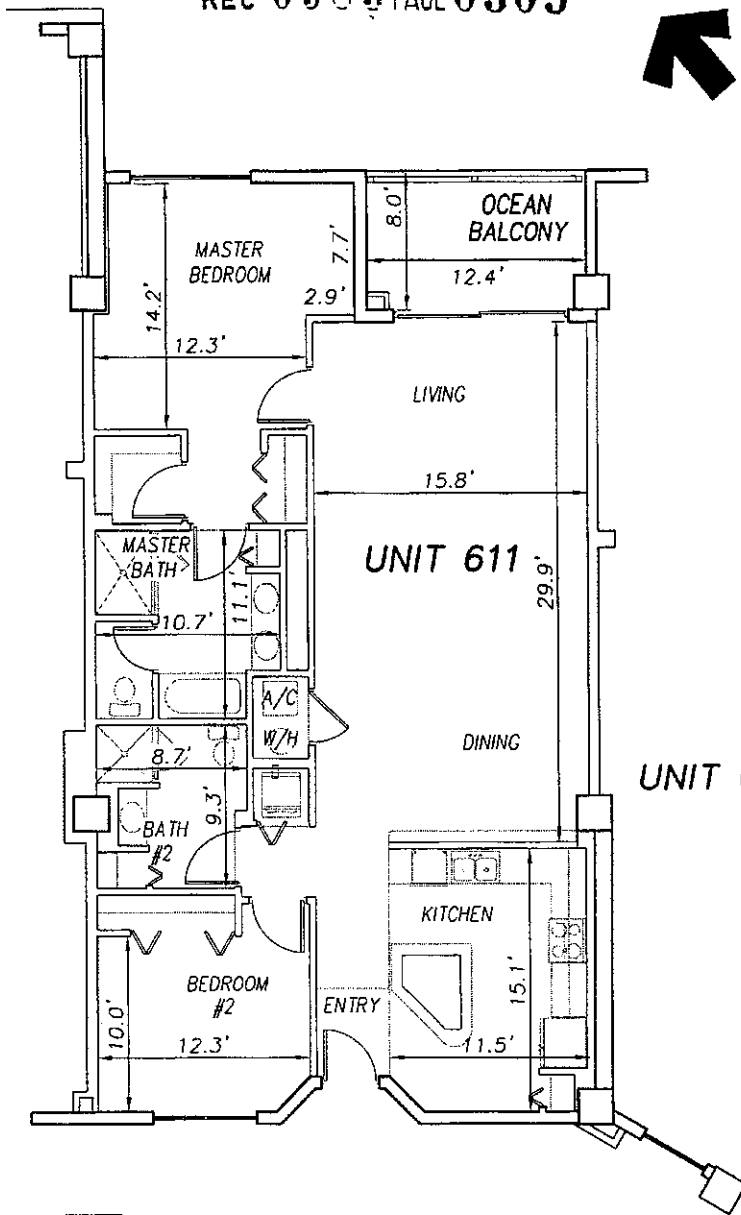
OFF REC 0983 PAGE 0309

EXHIBIT 'B'

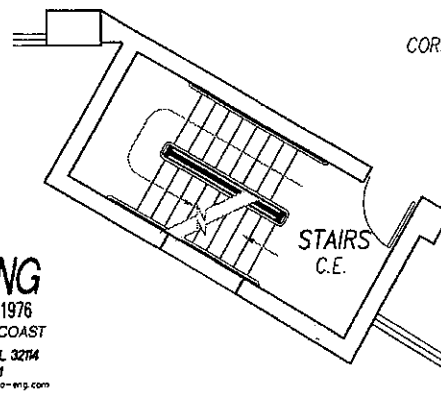


UNIT 610

UNIT 612



CORRIDOR - C.E.



**SURF CLUB II  
CONDOMINIUM**

SITUATED IN MATANZAS SHORES  
FLAGLER COUNTY, FLORIDA

**SIXTH FLOOR - UNIT 611 (North Wing)**



**TOMOKA ENGINEERING**

CIVIL ENGINEERING & LAND SURVEYING SINCE 1976  
DAYTONA BEACH FLAGLER/PALM COAST  
Main Office: 900 So. Ridgewood Ave., Daytona Beach, FL 32114  
Phone: 386-257-1600 Fax: 386-257-1601  
email: tomoka@tomoka-eng.com website: www.tomoka@tomoka-eng.com

DATE ISSUED: 07/23/2003

JOB # T3070PCBWI

SHEET 148 OF 213 SHEETS

P:\land projects T2003\T3070PCBWI\dwg\CONDO-sh 136 - 161 6th Fl.dwg 09/11/2003 10:16:35 AM EDT

0 10 20

SCALE 1" = 10'

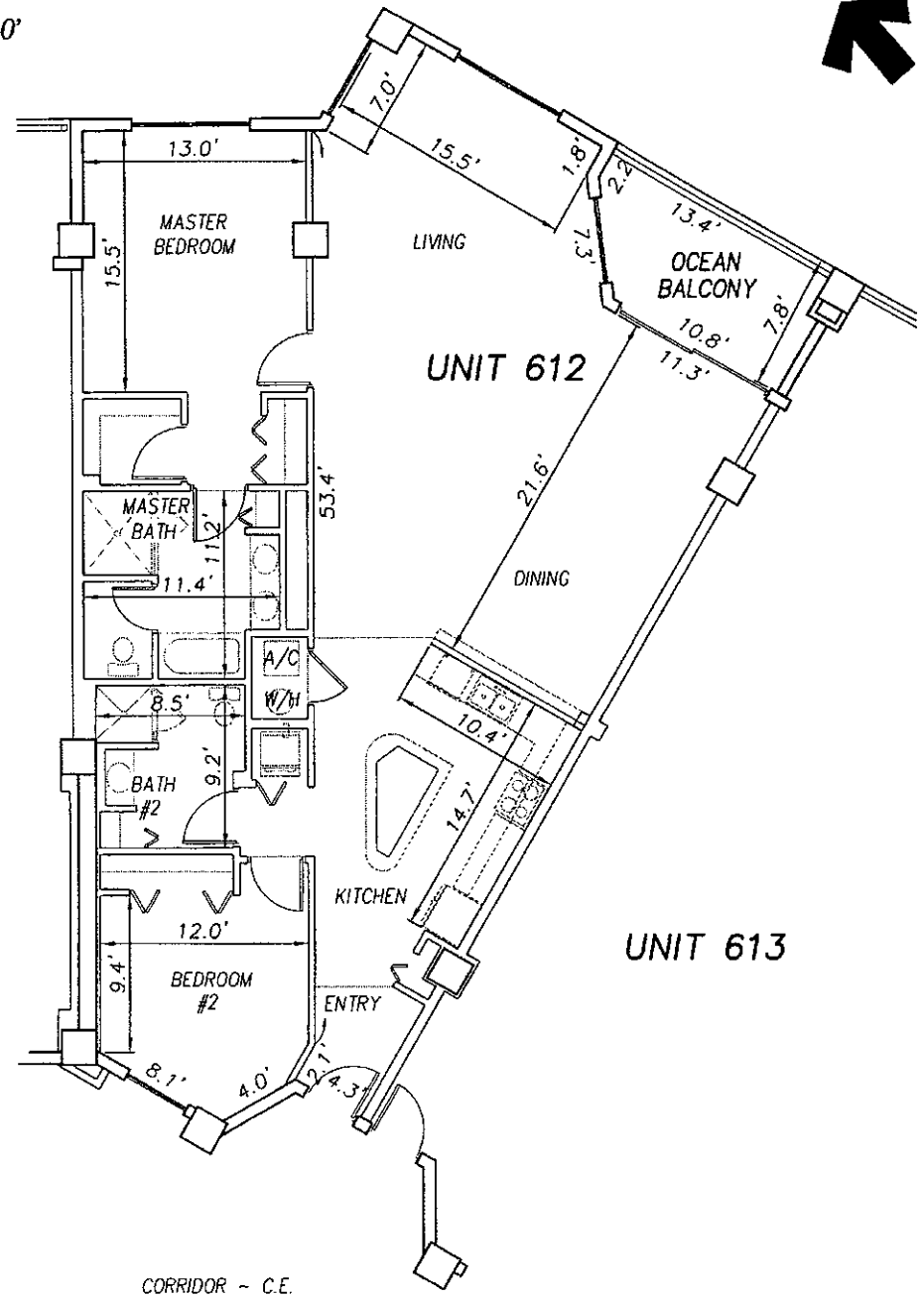
OFF REC 0983 PAGE 0310 EXHIBIT 'B'



UNIT 611

UNIT 612

UNIT 613



P:\land\_projects\T3070PCBWI\dwg\CONDO-sh 136 - 161 6th Fl.dwg 09/11/2003 10:16:35 AM EDT

**SURF CLUB II**  
**CONDOMINIUM**  
 SITUATED IN MATANZAS SHORES  
 FLAGLER COUNTY, FLORIDA  
**SIXTH FLOOR - UNIT 612 (North Wing)**



**TOMOKA ENGINEERING**  
 CIVIL ENGINEERING & LAND SURVEYING SINCE 1976  
 DAYTONA BEACH FLAGLER/PALM COAST  
 Main Office: 900 So. Ridgewood Ave., Daytona Beach, FL 32114  
 Phone: 386-257-1600 Fax: 386-257-1601  
 email: tomoka@tomoka-eng.com web site: www.tomoka@tomoka-eng.com

DATE ISSUED: 07/23/2003

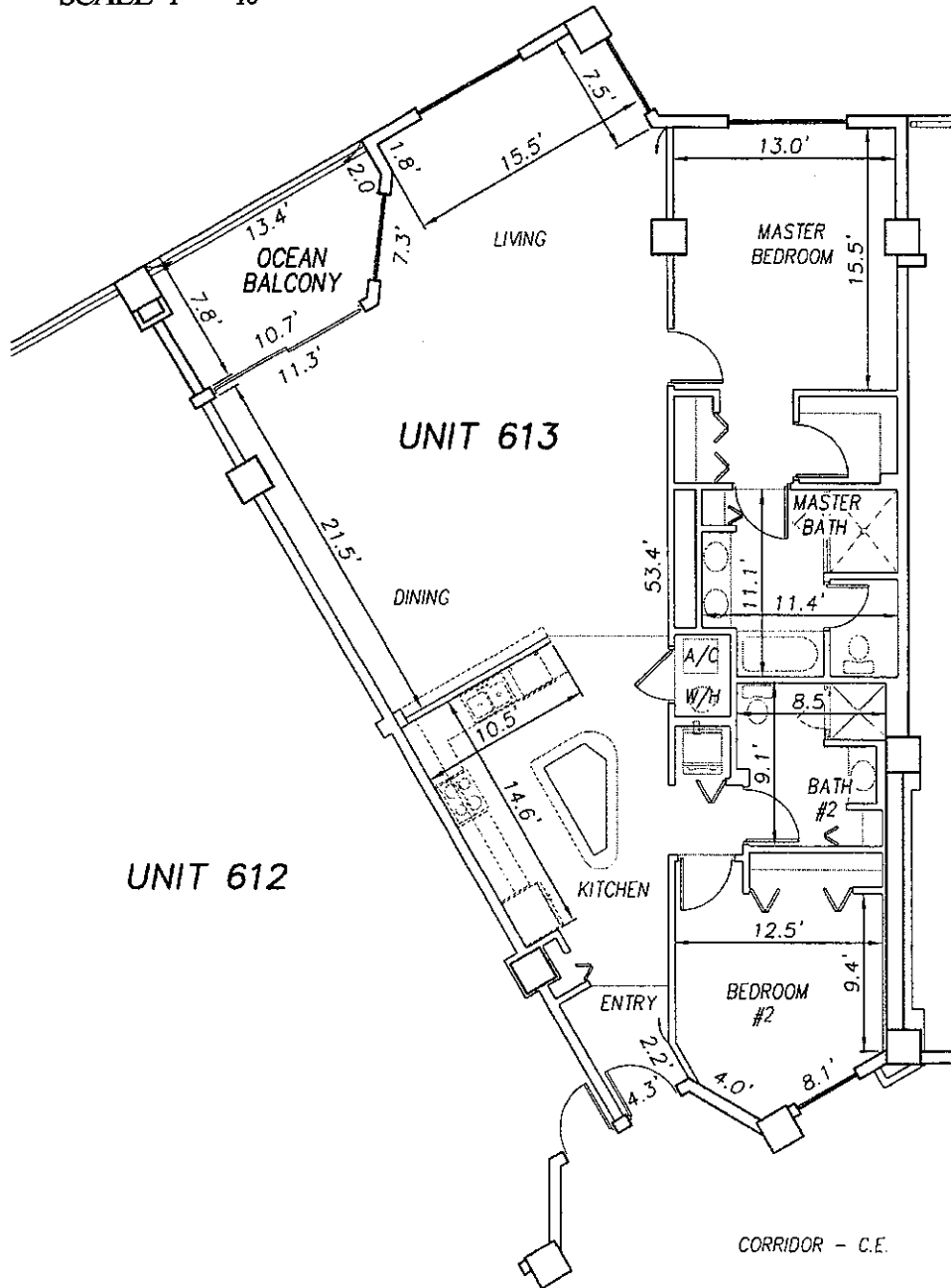
JOB # T3070PCBWI

SHEET 149 OF 213 SHEETS

0 10 20

SCALE 1" = 10'

OFF REC 0983 PAGE 0311 EXHIBIT 'B'



P:\land projects T2003\T3070PCBWI\ewg\CONDO-sh 136 - 161 6th Fl.dwg 09/11/2003 10:16:35 AM EDT

**SURF CLUB II**  
**CONDOMINIUM**  
 SITUATED IN MATANZAS SHORES  
 FLAGLER COUNTY, FLORIDA  
**SIXTH FLOOR - UNIT 613 (South Wing)**



**TOMOKA ENGINEERING**  
 CIVIL ENGINEERING & LAND SURVEYING SINCE 1976  
 DAYTONA BEACH FLAGLER/PALM COAST  
 Main Office: 900 So. Ridgewood Ave., Daytona Beach, FL 32114  
 Phone: 386-257-1600 Fax: 386-257-1601  
 email: tomoka@tomoka-eng.com website: www.tomoka@tomoka-eng.com

DATE ISSUED: 07/23/2003

JOB # T3070PCBWI

SHEET 150 OF 213 SHEETS

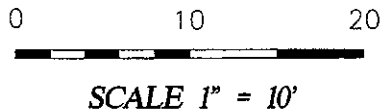
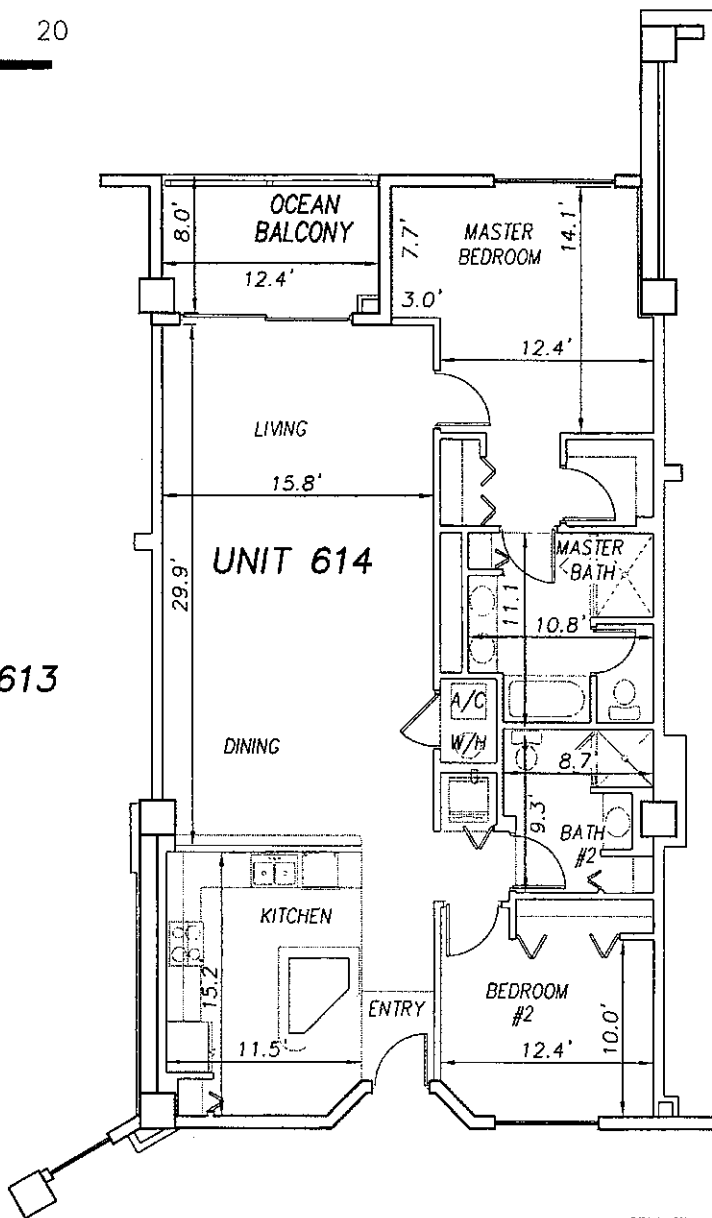


EXHIBIT 'B'



UNIT 613

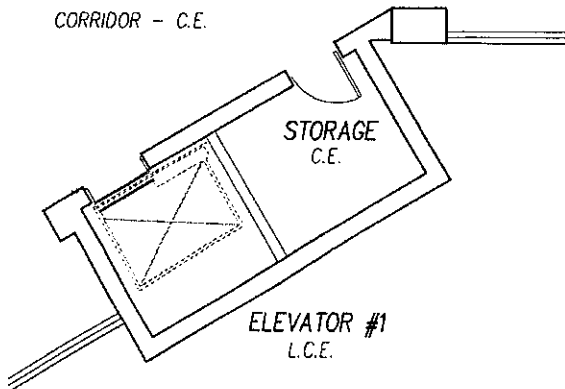
UNIT 614

UNIT 615

**SURF CLUB II  
CONDOMINIUM**  
SITUATED IN MATANZAS SHORES  
FLAGLER COUNTY, FLORIDA  
**SIXTH FLOOR - UNIT 614 (South Wing)**



**TOMOKA ENGINEERING**  
CIVIL ENGINEERING & LAND SURVEYING SINCE 1976  
DAYTONA BEACH FLAGLER/PALM COAST  
Main Office: 900 So. Ridgewood Ave., Daytona Beach, FL 32114  
Phone: 386-257-1600 Fax: 386-257-1601  
email: tomoka@tomoka-eng.com website: www.tomoka@tomoka-eng.com



DATE ISSUED: 07/23/2003

JOB # T3070PCBW1

SHEET 151 OF 213 SHEETS

P:\land projects T2003\T3070PCBW1\dwg\CONDO-sh 136 - 161 6th Fl.dwg 09/11/2003 10:16:35 AM EDT

0 10 20

SCALE 1" = 10'

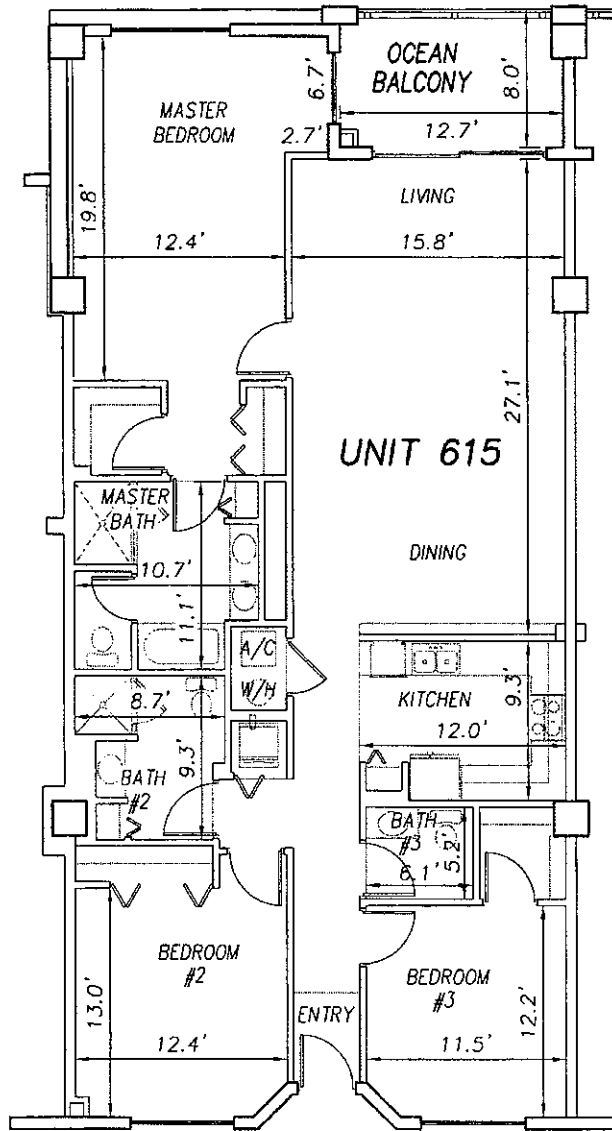
OFF REC 0983 PAGE 0313 EXHIBIT 'B'



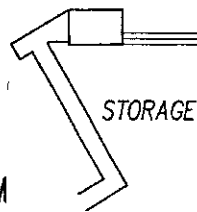
UNIT 614

UNIT 615

UNIT 616



CORRIDOR - C.E.



**SURF CLUB II  
CONDOMINIUM**

SITUATED IN MATANZAS SHORES  
FLAGLER COUNTY, FLORIDA

**SIXTH FLOOR - UNIT 615 (South Wing)**



**TOMOKA ENGINEERING**

CIVIL ENGINEERING & LAND SURVEYING SINCE 1976  
DAYTONA BEACH FLAGLER/PALM COAST  
Main Office: 900 So. Ridgewood Ave., Daytona Beach, FL 32114  
Phone: 386-257-1600 Fax: 386-257-1601  
email: tomoka@tomoka-eng.com website: www.tomoka@tomoka-eng.com

DATE ISSUED: 07/23/2003

JOB # T3070PCBWI

SHEET 152 OF 213 SHEETS

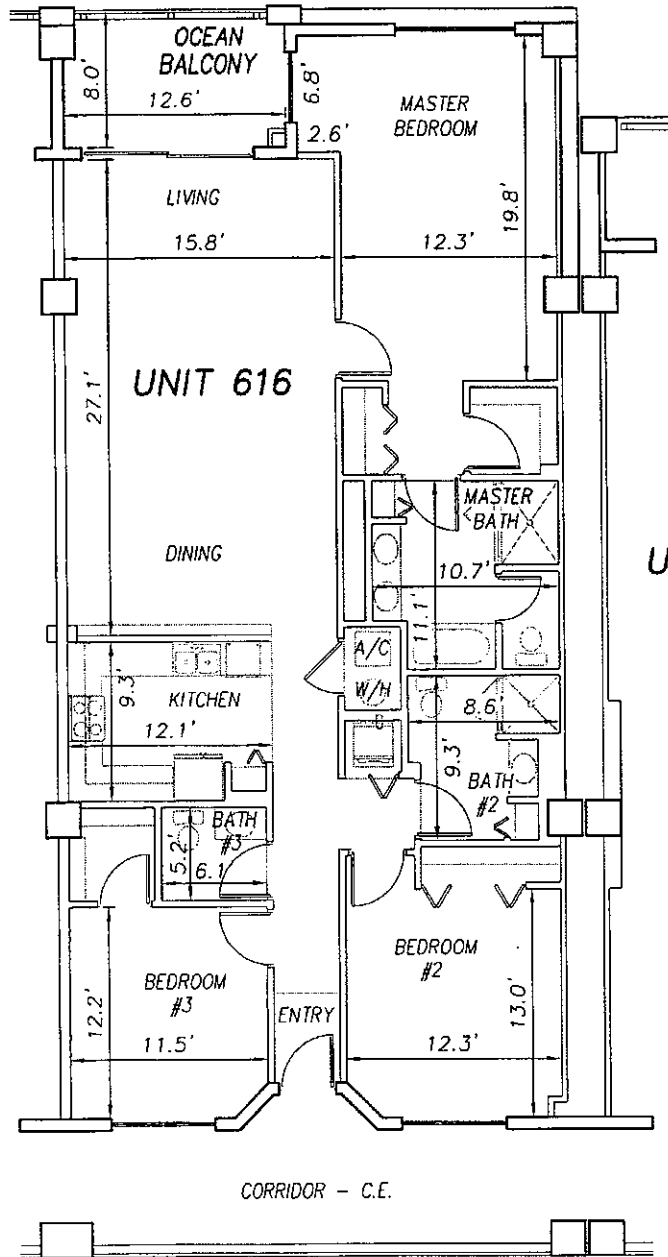
P:\land\_projects\T3070PCBWI\dwg\CONDO-sh 136 - 161 6th Fl.dwg 09/11/2003 10:16:35 AM EDT

0 10 20

SCALE 1" = 10'

OFF REC 0983 PAGE 0314

EXHIBIT 'B'



UNIT 615

UNIT 616

UNIT 617

P:\cond projects T2003\T3070PCBWI\dwg\CONDO-sh 136 - 161 6th Fl.dwg 09/11/2003 10:16:35 AM EDT

**SURF CLUB II  
CONDOMINIUM**  
SITUATED IN MATANZAS SHORES  
FLAGLER COUNTY, FLORIDA  
**SIXTH FLOOR - UNIT 616 (South Wing)**



**TOMOKA ENGINEERING**  
CIVIL ENGINEERING & LAND SURVEYING SINCE 1976  
DAYTONA BEACH FLAGLER/PALM COAST  
Main Office: 900 So. Ridgewood Ave., Daytona Beach, FL 32114  
Phone: 386-257-1800 Fax: 386-257-1801  
email: tomoka@tomoka-eng.com website: www.tomoka@tomoka-eng.com

DATE ISSUED: 07/23/2003

JOB # T3070PCBWI

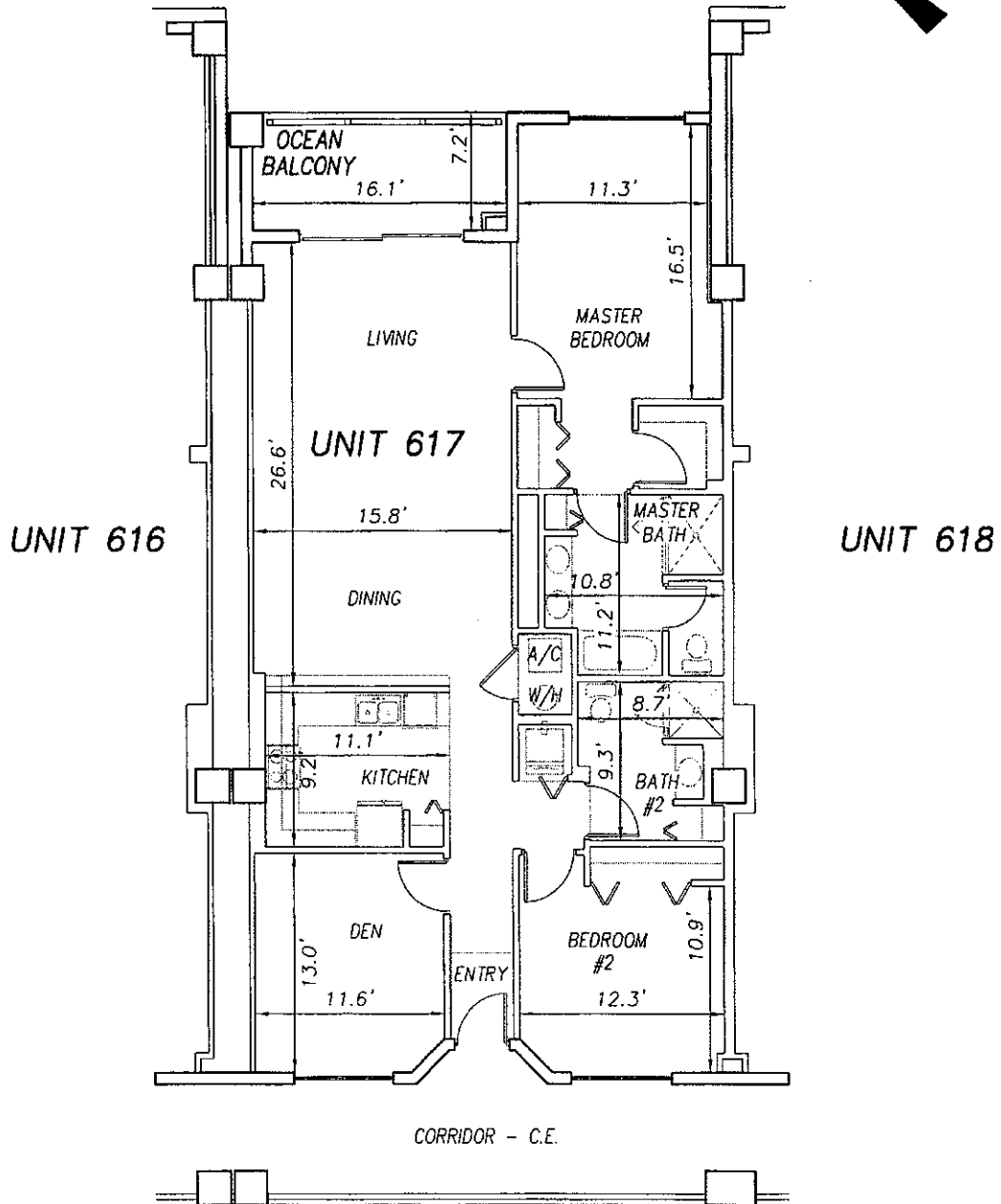
SHEET 153 OF 213 SHEETS

0 10 20

SCALE 1" = 10'

OFF REC 0983 PAGE 0315

EXHIBIT 'B'



P:\land projects T2003\T3070PCBW1.dwg\CONDO-sh 136 - 161 6th Fl.dwg 09/11/2003 10:16:35 AM EDT

**SURF CLUB II  
CONDOMINIUM**

SITUATED IN MATANZAS SHORES  
FLAGLER COUNTY, FLORIDA

**SIXTH FLOOR - UNIT 617 (South Wing)**



**TOMOKA ENGINEERING**

CIVIL ENGINEERING & LAND SURVEYING SINCE 1976  
DAYTONA BEACH FLAGLER/PALM COAST  
Main Office: 900 So. Ridgewood Ave., Daytona Beach, FL 32114  
Phone: 386-257-1600 Fax: 386-257-1601  
e-mail: tomoka@tomoka-eng.com website: www.tomoka@tomoka-eng.com

DATE ISSUED: 07/23/2003

JOB # T3070PCBW1

SHEET 154 OF 213 SHEETS

0 10 20

SCALE 1" = 10'

OFF REC 0983 PAGE 0316

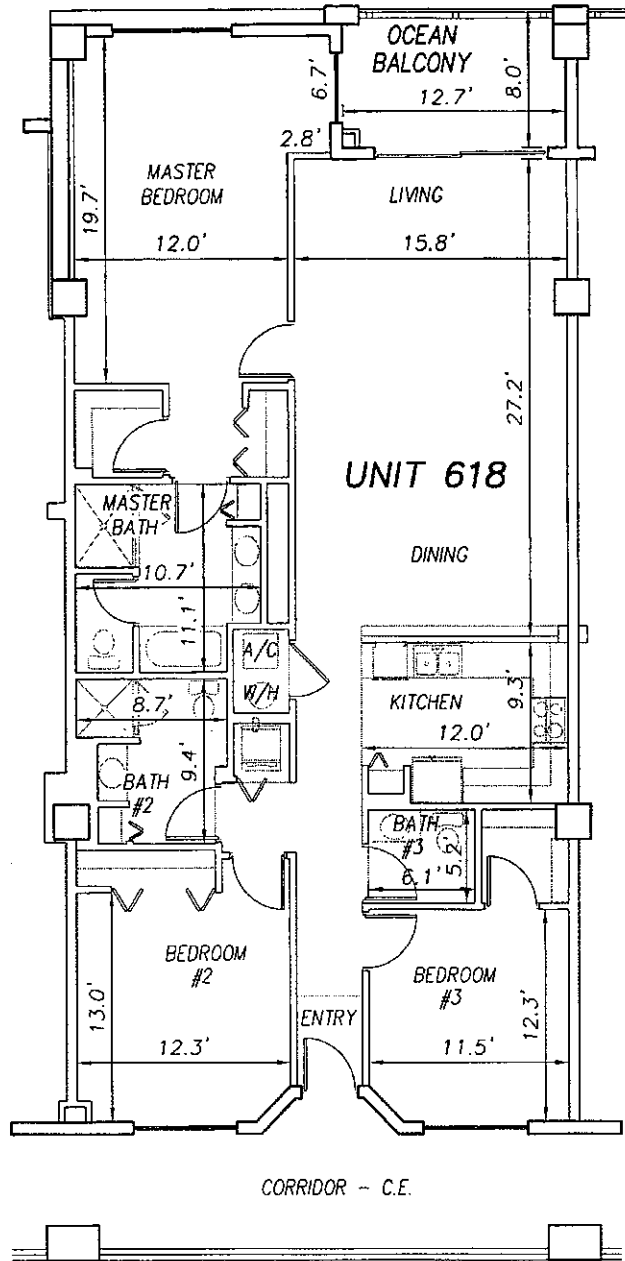
EXHIBIT 'B'



UNIT 617

UNIT 618

UNIT 619



**SURF CLUB II  
CONDOMINIUM**

SITUATED IN MATANZAS SHORES  
FLAGLER COUNTY, FLORIDA

**SIXTH FLOOR - UNIT 618 (South Wing)**



**TOMOKA ENGINEERING**

CIVIL ENGINEERING & LAND SURVEYING SINCE 1976  
DAYTONA BEACH FLAGLER/PALM COAST  
Main Office: 900 So. Ridgewood Ave., Daytona Beach, FL 32114  
Phone: 386-257-1600 Fax: 386-257-1601  
email: tomoka@tomoka-eng.com website: www.tomoka-tomoka-eng.com

DATE ISSUED: 07/23/2003

JOB # T3070PCBWI

SHEET 155 OF 213 SHEETS

P:\land projects \2003\T3070PCBWI\dwg\CONDO-sh 136 - 161 6th Fl.dwg 09/11/2003 10:16:35 AM EDT



0 10 20

SCALE 1" = 10'

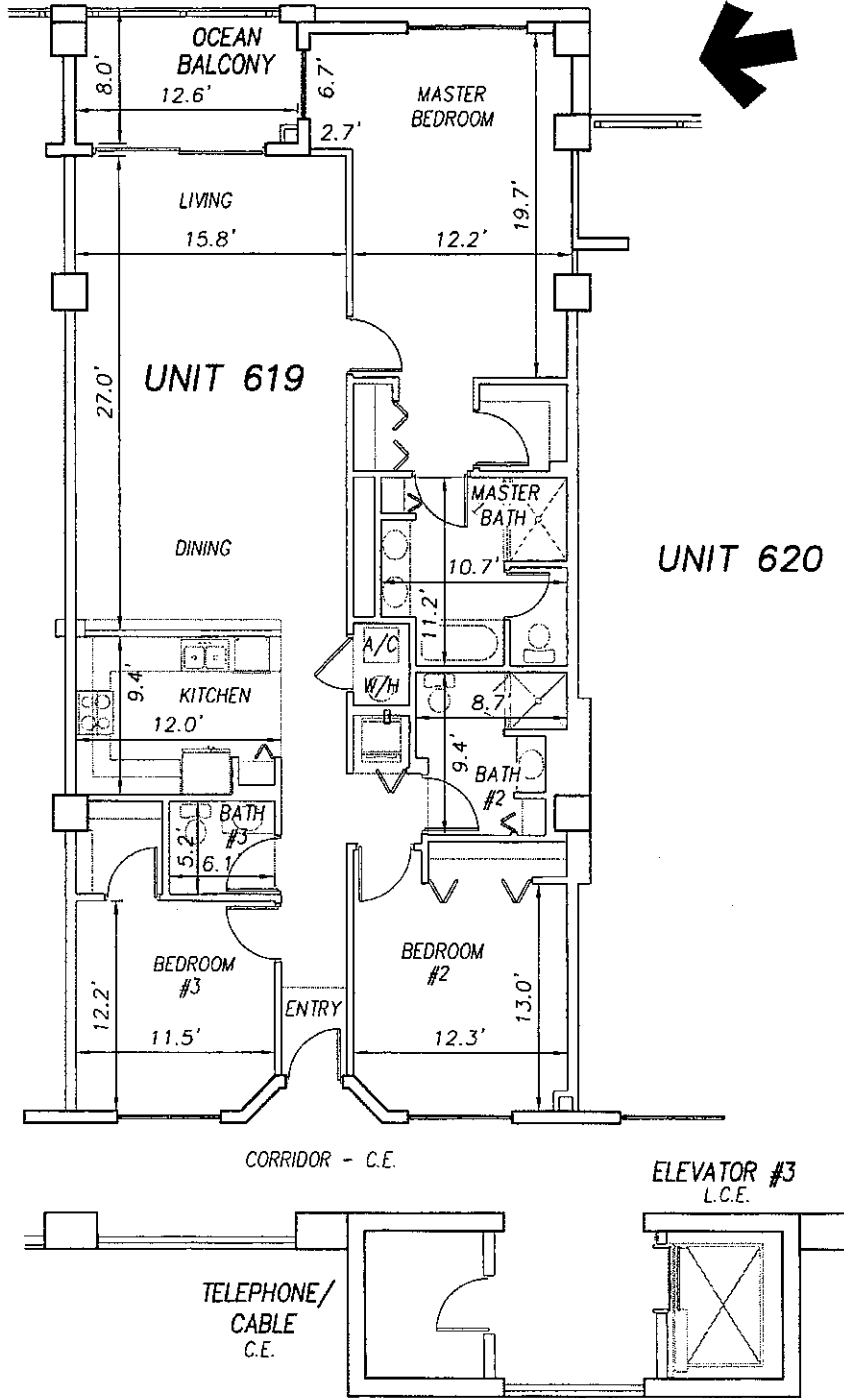
OFF REC 0983 PAGE 0317 EXHIBIT 'B'



UNIT 618

UNIT 619

UNIT 620



P:\cond\_projects T2003\T3070PCBWI\dwg\CONDO-sh 136 - 161 6th Fl.dwg 09/11/2003 10:16:35 AM EDT

**SURF CLUB II  
CONDOMINIUM**

SITUATED IN MATANZAS SHORES  
FLAGLER COUNTY, FLORIDA

**SIXTH FLOOR - UNIT 619 (South Wing)**



**TOMOKA ENGINEERING**

CIVIL ENGINEERING & LAND SURVEYING SINCE 1976  
DAYTONA BEACH FLAGLER/PALM COAST  
Main Office: 900 So. Ridgewood Ave., Daytona Beach, FL 32114  
Phone: 386-257-1600 Fax: 386-257-1601  
email: tomoka@tomoka-eng.com website: www.tomoka@tomoka-eng.com

DATE ISSUED: 07/23/2003

JOB # T3070PCBWI

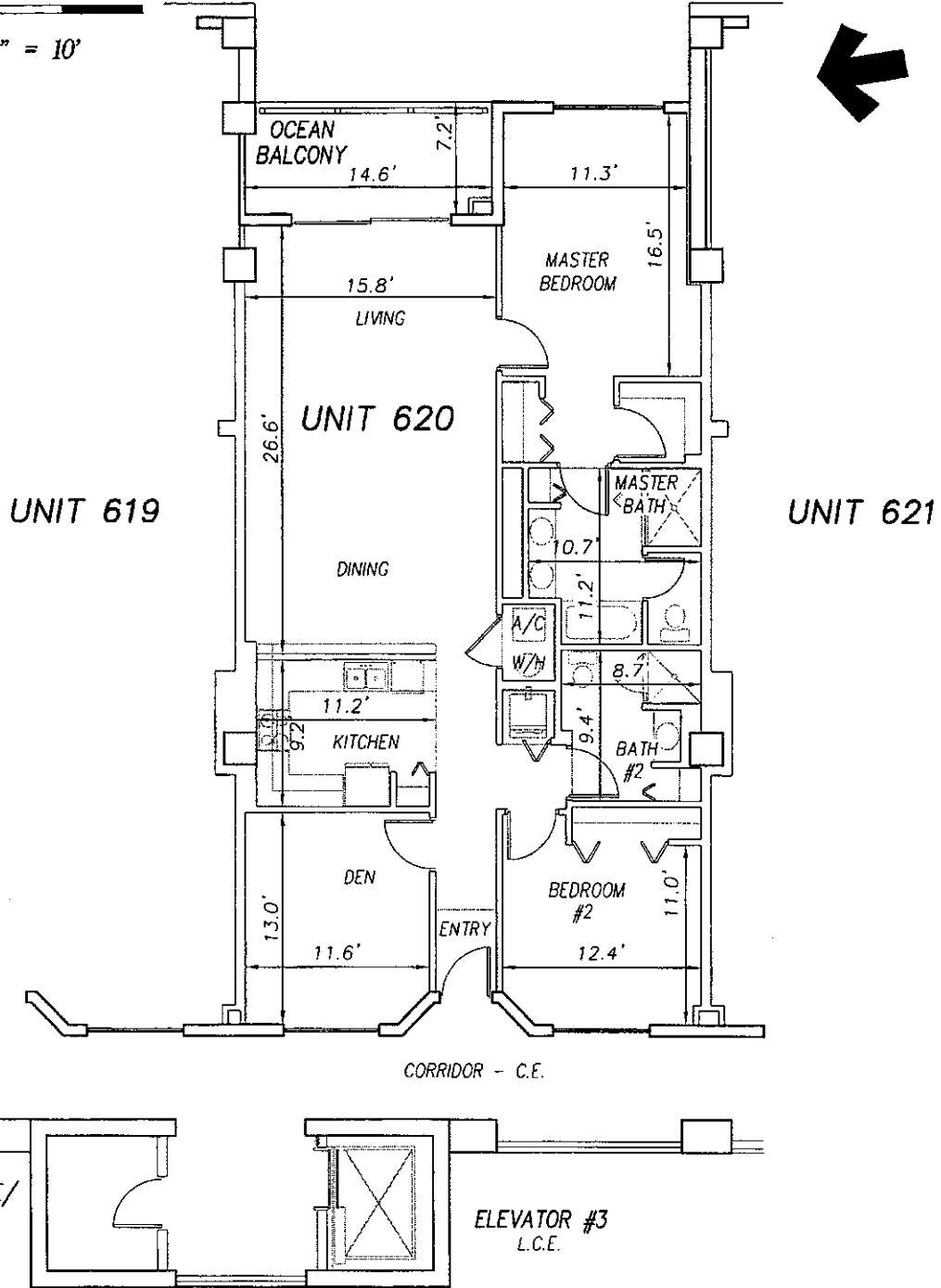
SHEET 156 OF 213 SHEETS

0 10 20

OFF REC 0983 PAGE 0318

EXHIBIT 'B'

SCALE 1" = 10'



TELEPHONE/  
CABLE  
C.E.

ELEVATOR #3  
L.C.E.

**SURF CLUB II  
CONDOMINIUM**  
SITUATED IN MATANZAS SHORES  
FLAGLER COUNTY, FLORIDA  
**SIXTH FLOOR - UNIT 620 (South Wing)**



**TOMOKA ENGINEERING**  
CIVIL ENGINEERING & LAND SURVEYING SINCE 1976  
DAYTONA BEACH      FLAGLER/PALM COAST  
Main Office: 900 So. Ridgewood Ave., Daytona Beach, FL 32114  
Phone: 386-257-1600      Fax: 386-257-1601  
email: tomoka@tomoka-eng.com      website: www.tomoka@tomoka-eng.com

DATE ISSUED: 07/23/2003

JOB # T3070PCBWI

SHEET 157 OF 213 SHEETS

P:\land projects T2003\T3070PCBWI\dwg\CONDG-sh 136 - 161 6th Fl.dwg 09/11/2003 10:16:35 AM EDT

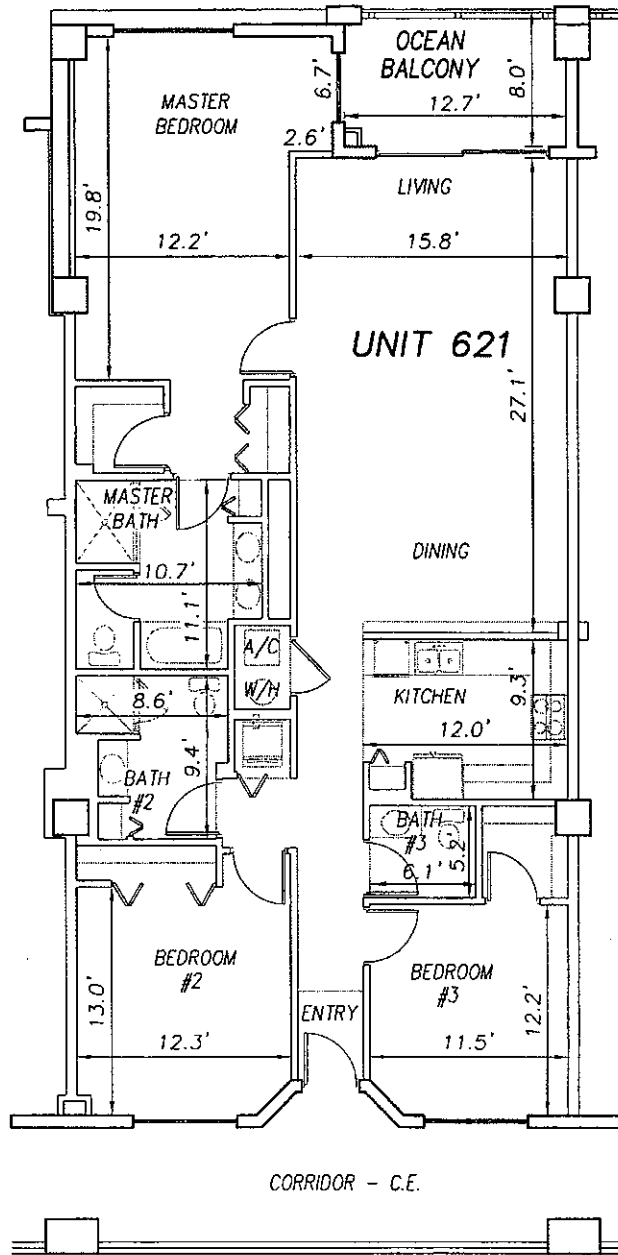
0 10 20

SCALE 1" = 10'

OFF REC 0983 PAGE 0319 EXHIBIT 'B'



UNIT 620



UNIT 622

P:\cond\_projects\T2003\T3070PCBWI\dwg\CONDO-sh 136 - 161 6th Fl.dwg 09/11/2003 10:16:35 AM EDT

**SURF CLUB II**  
**CONDOMINIUM**  
 SITUATED IN MATANZAS SHORES  
 FLAGLER COUNTY, FLORIDA  
**SIXTH FLOOR - UNIT 621 (South Wing)**



**TOMOKA ENGINEERING**  
 CIVIL ENGINEERING & LAND SURVEYING SINCE 1976  
 DAYTONA BEACH FLAGLER/PALM COAST  
 Main Office: 900 So. Ridgewood Ave., Daytona Beach, FL 32114  
 Phone: 386-257-1600 Fax: 386-257-1601  
 e-mail: tomoka@tomoka-eng.com website: www.tomoka@tomoka-eng.com

DATE ISSUED: 07/23/2003

JOB # T3070PCBWI

SHEET 158 OF 213 SHEETS

0 10 20

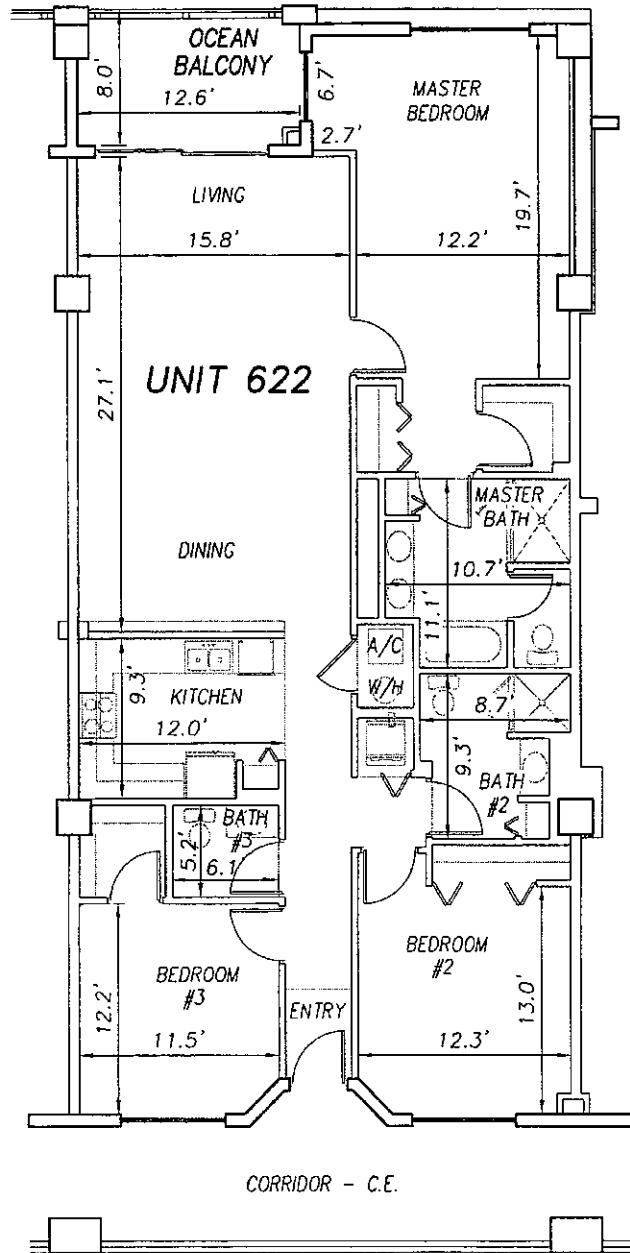
SCALE 1" = 10'

OFF REC 0983 PAGE 0320

EXHIBIT 'B'



UNIT 621



UNIT 623

**SURF CLUB II  
CONDOMINIUM**

SITUATED IN MATANZAS SHORES  
FLAGLER COUNTY, FLORIDA

**SIXTH FLOOR - UNIT 622 (South Wing)**



**TOMOKA ENGINEERING**

CIVIL ENGINEERING & LAND SURVEYING SINCE 1976  
DAYTONA BEACH FLAGLER/PALM COAST  
Main Office: 900 So. Ridgewood Ave., Daytona Beach, FL 32114  
Phone: 386-257-1600 Fax: 386-257-1601  
email: tomoka@tomoka-eng.com website: www.tomoka@tomoka-eng.com

DATE ISSUED: 07/23/2003

JOB # T3070PCBWI

SHEET 159 OF 213 SHEETS

P:\land projects T2003\T3070PCBWI\dwg\CONDO-sh 136 - 161 6th Fl.dwg 09/11/2003 10:16:35 AM EDT

0 10 20

SCALE 1" = 10'

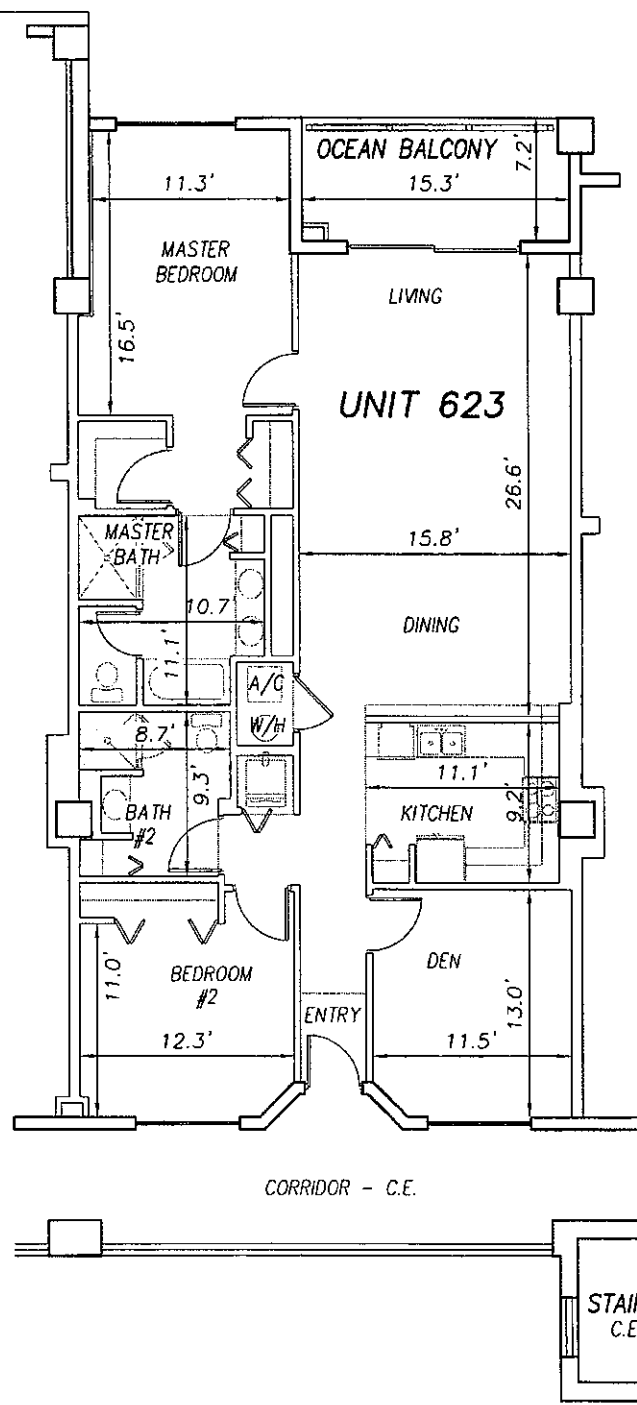
OFF REC 0983 PAGE 0321 EXHIBIT 'B'



UNIT 622

UNIT 623

UNIT 624



P:\land projects T2003\T3070PCBWA\dwg\CONDO-sh 136 - 161 6th Fl.dwg 05/11/2003 10:16:35 AM EDT

**SURF CLUB II  
CONDOMINIUM**  
SITUATED IN MATANZAS SHORES  
FLAGLER COUNTY, FLORIDA  
**SIXTH FLOOR - UNIT 623 (South Wing)**



**TOMOKA ENGINEERING**  
CIVIL ENGINEERING & LAND SURVEYING SINCE 1976  
DAYTONA BEACH FLAGLER/PALM COAST  
Main Office: 900 So. Ridgewood Ave., Daytona Beach, FL 32114  
Phone: 386-257-1600 Fax: 386-257-1601  
email: tomoka@tomoka-eng.com www: www.tomoka-tomoka-eng.com

0 10 20

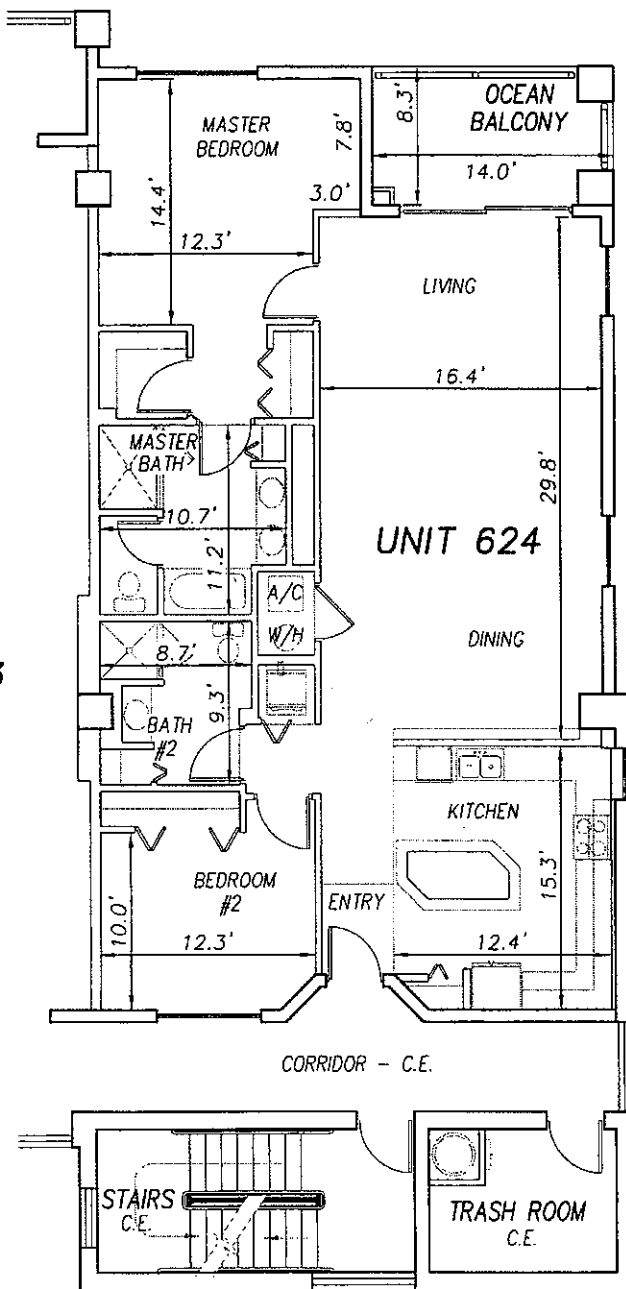
SCALE 1" = 10'

OFF REC 0983 PAGE 0322

EXHIBIT 'B'



UNIT 623



**SURF CLUB II  
CONDOMINIUM**

SITUATED IN MATANZAS SHORES  
FLAGLER COUNTY, FLORIDA

**SIXTH FLOOR - UNIT 624 (South Wing)**



**TOMOKA ENGINEERING**

CIVIL ENGINEERING & LAND SURVEYING SINCE 1976  
DAYTONA BEACH FLAGLER/PALM COAST  
Main Office: 900 So. Ridgewood Ave., Daytona Beach, FL 32114  
Phone: 386-257-1600 Fax: 386-257-1601  
email: tomoka@tomoka-eng.com website: www.tomoka@tomoka-eng.com

DATE ISSUED: 07/23/2003

JOB # T3070PCBWI

SHEET 161 OF 213 SHEETS

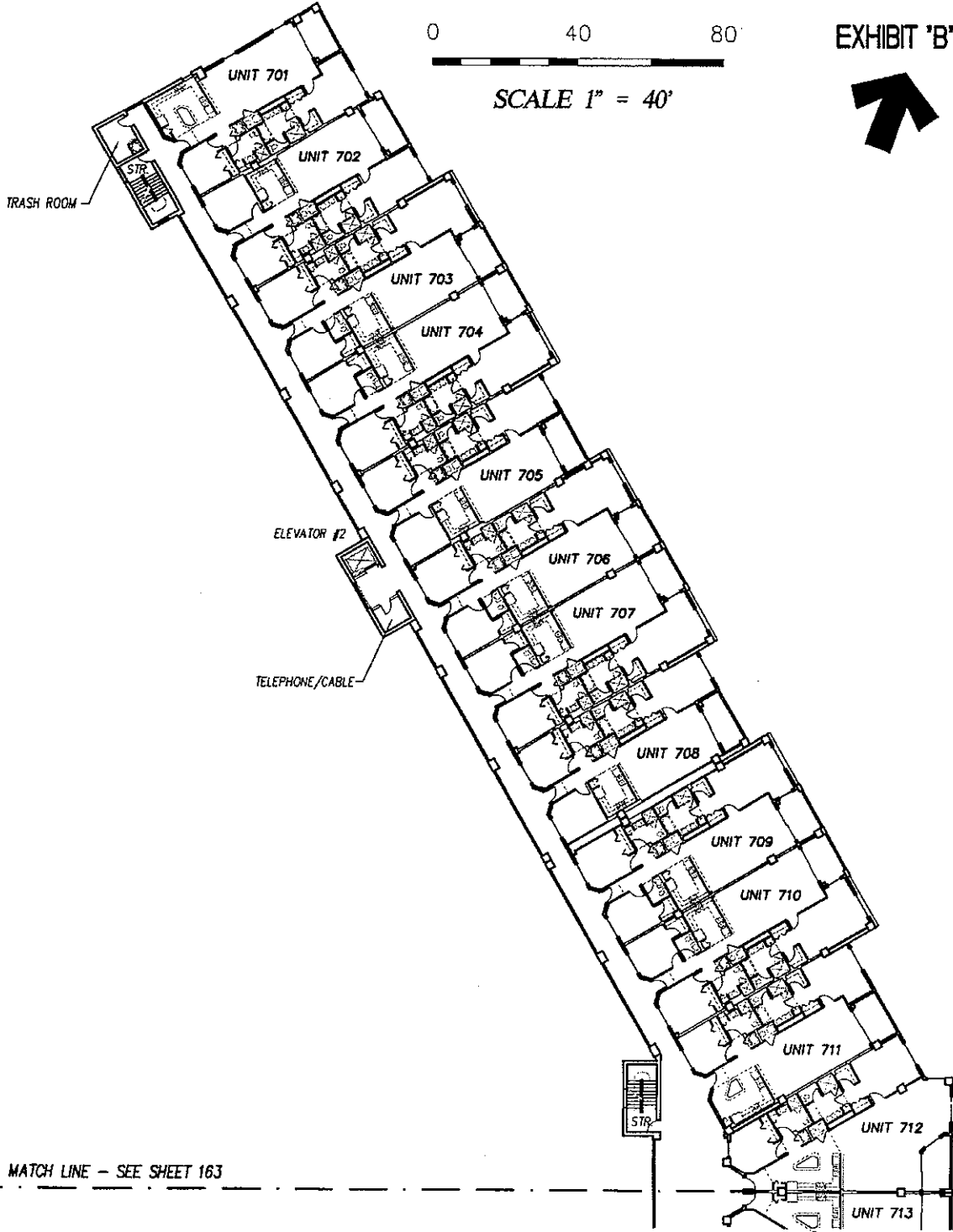
P:\land projects T2003\T3070PCBWI\dwg\CONDO-sh 136 - 161 6th Fl.dwg 09/11/2003 10:16:35 AM EDT

0 40 80



SCALE 1" = 40'

EXHIBIT 'B'



MATCH LINE - SEE SHEET 163

**SURF CLUB II  
CONDOMINIUM**

SITUATED IN MATANZAS SHORES  
FLAGLER COUNTY, FLORIDA

**SEVENTH FLOOR - OVERALL LAYOUT (North Wing)**



**TOMOKA ENGINEERING**

CIVIL ENGINEERING & LAND SURVEYING SINCE 1976  
DAYTONA BEACH FLAGLER/PALM COAST  
Main Office: 900 So. Ridgewood Ave., Daytona Beach, FL 32114  
Phone: 386-257-1600 Fax: 386-257-1801  
email: tomoka@tomoka-eng.com website: www.tomoka-eng.com

DATE ISSUED: 07/23/2003

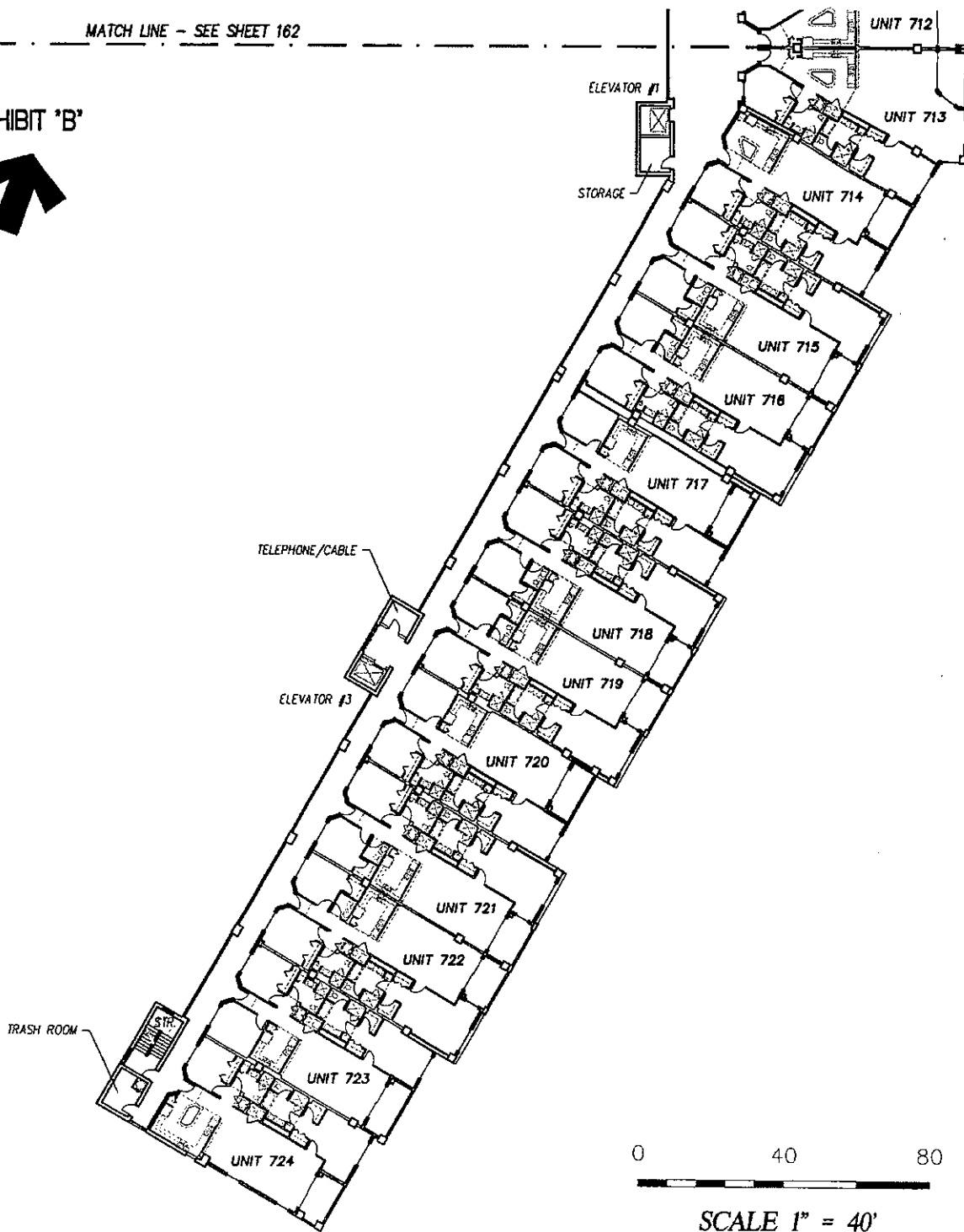
JOB # T3070PCBWI

SHEET 162 OF 213 SHEETS

\\survey\12001\land projects t2003\T3070PCBWI\dwg\CONDO-sh 162 - 187 7th Fl.dwg 09/11/2003 09:21:10 AM EDT

MATCH LINE - SEE SHEET 162

EXHIBIT 'B'



**SURF CLUB II  
CONDOMINIUM**

SITUATED IN MATANZAS SHORES  
FLAGLER COUNTY, FLORIDA

**SEVENTH FLOOR - OVERALL LAYOUT (South Wing)**



**TOMOKA ENGINEERING**

CIVIL ENGINEERING & LAND SURVEYING SINCE 1976  
DAYTONA BEACH FLAGLER/PALM COAST  
Main Office: 900 So. Ridgewood Ave., Daytona Beach, FL 32114  
Phone: 386-257-1600 Fax: 386-257-1601  
email: tomoka@tomoka-eng.com website: www.tomoka@tomoka-eng.com

DATE ISSUED: 07/23/2003

JOB # T3070PCBWI

SHEET 163 OF 213 SHEETS

\\survey\2001\land projects\2003\T3070PCBWI\dwg\CONDO-sh 162 - 187 7th Fl.dwg 09/11/2003 09:21:10 AM EDT

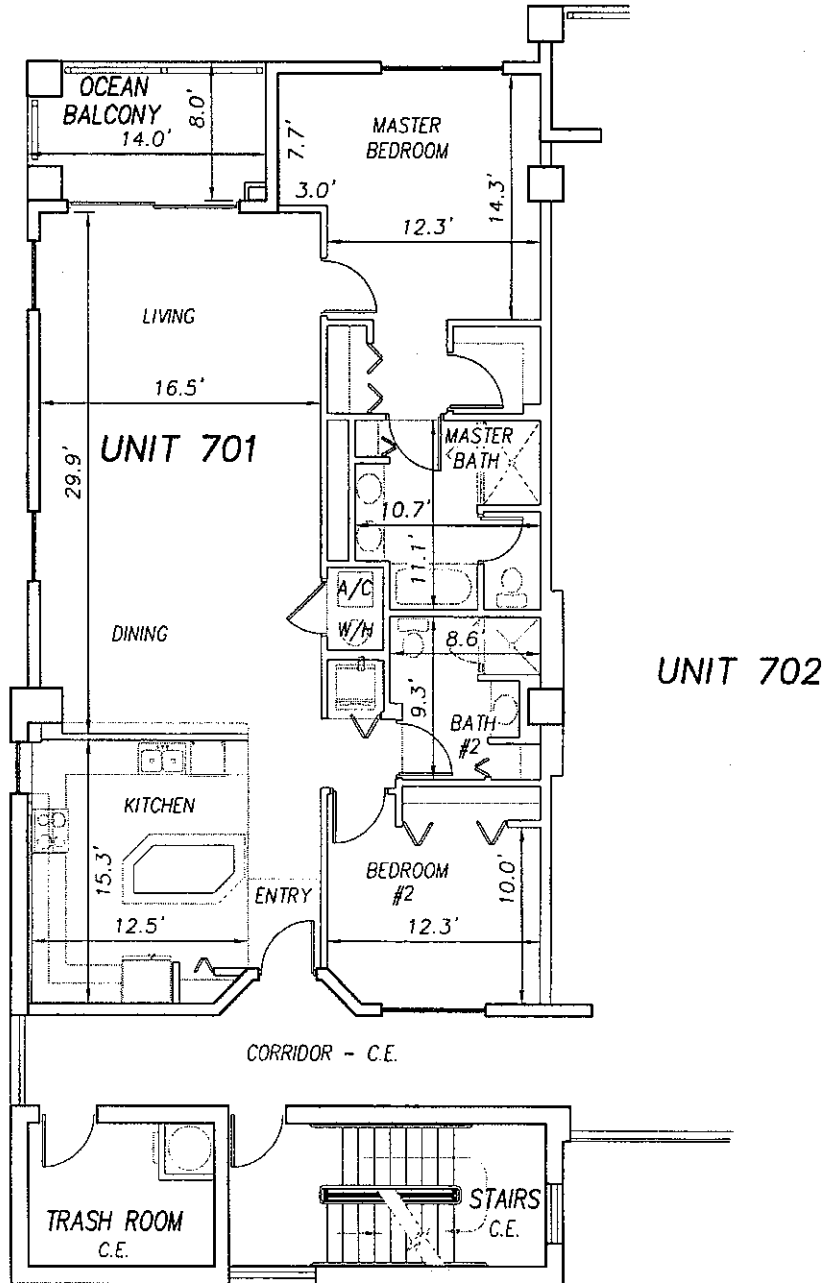


0 10 20

SCALE 1" = 10'

OFF REC 0983 PAGE 0325

EXHIBIT 'B'



\\survey\12001\land projects\2003\T3070PCBW\dwg\CONDO-sh 162 - 187 7th Fl.dwg 09/11/2003 09:21:10 AM EDT

**SURF CLUB II  
CONDOMINIUM**  
SITUATED IN MATANZAS SHORES  
FLAGLER COUNTY, FLORIDA  
**SEVENTH FLOOR - UNIT 701 (North Wing)**



**TOMOKA ENGINEERING**  
CIVIL ENGINEERING & LAND SURVEYING SINCE 1976  
DAYTONA BEACH FLAGLER/PALM COAST  
Main Office: 900 So. Ridgewood Ave., Daytona Beach, FL 32114  
Phone: 386-257-1600 Fax: 386-257-1601  
email: tomoka@tomoka-eng.com website: www.tomoka@tomoka-eng.com

DATE ISSUED: 07/23/2003

JOB # T3070PCBW1

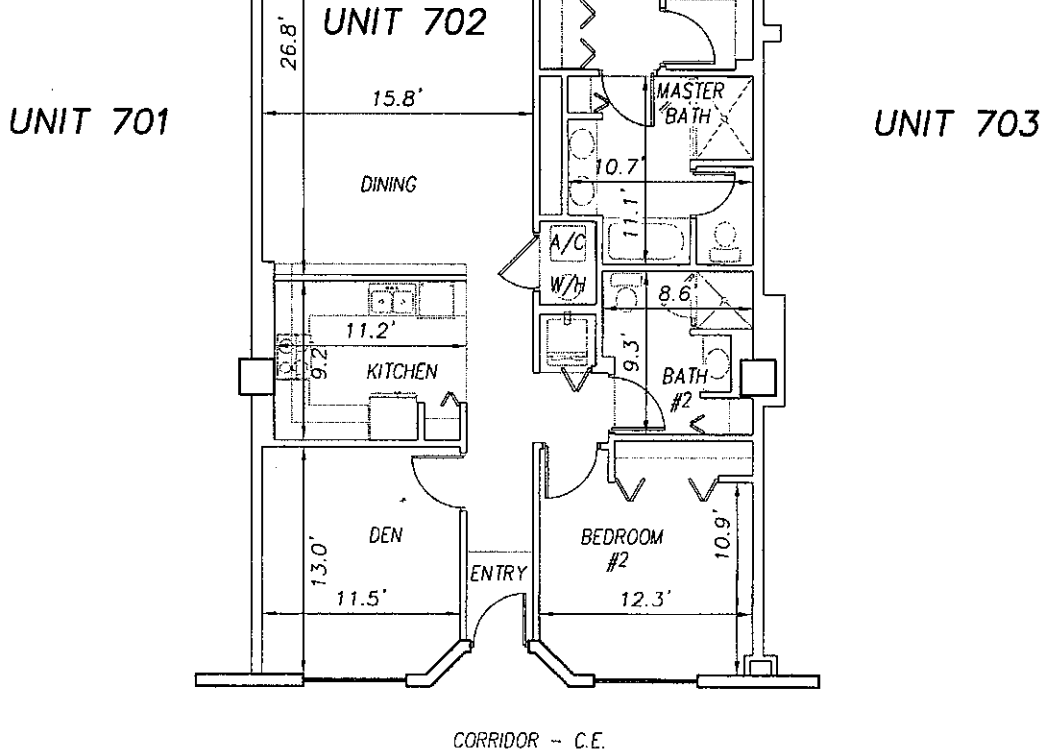
SHEET 164 OF 213 SHEETS

0 10 20

SCALE 1" = 10'

OFF REC 0983 PAGE 0326

EXHIBIT 'B'



\\survey\12001\land\_projects\12003\T3070PCBWI\dwg\CONDO-sh 162 - 187 7th Fl.dwg 09/11/2003 09:21:10 AM EDT

**SURF CLUB II  
CONDOMINIUM**  
SITUATED IN MATANZAS SHORES  
FLAGLER COUNTY, FLORIDA  
**SEVENTH FLOOR - UNIT 702 (North Wing)**



**TOMOKA ENGINEERING**  
CIVIL ENGINEERING & LAND SURVEYING SINCE 1976  
DAYTONA BEACH FLAGLER/PALM COAST  
Main Office: 900 So. Ridgewood Ave., Daytona Beach, FL 32114  
Phone: 386-257-1800 Fax: 386-257-1801  
emok: tomoka@tomoka-eng.com website: www.tomoka-tomoka-eng.com

DATE ISSUED: 07/23/2003

JOB # T3070PCBWI

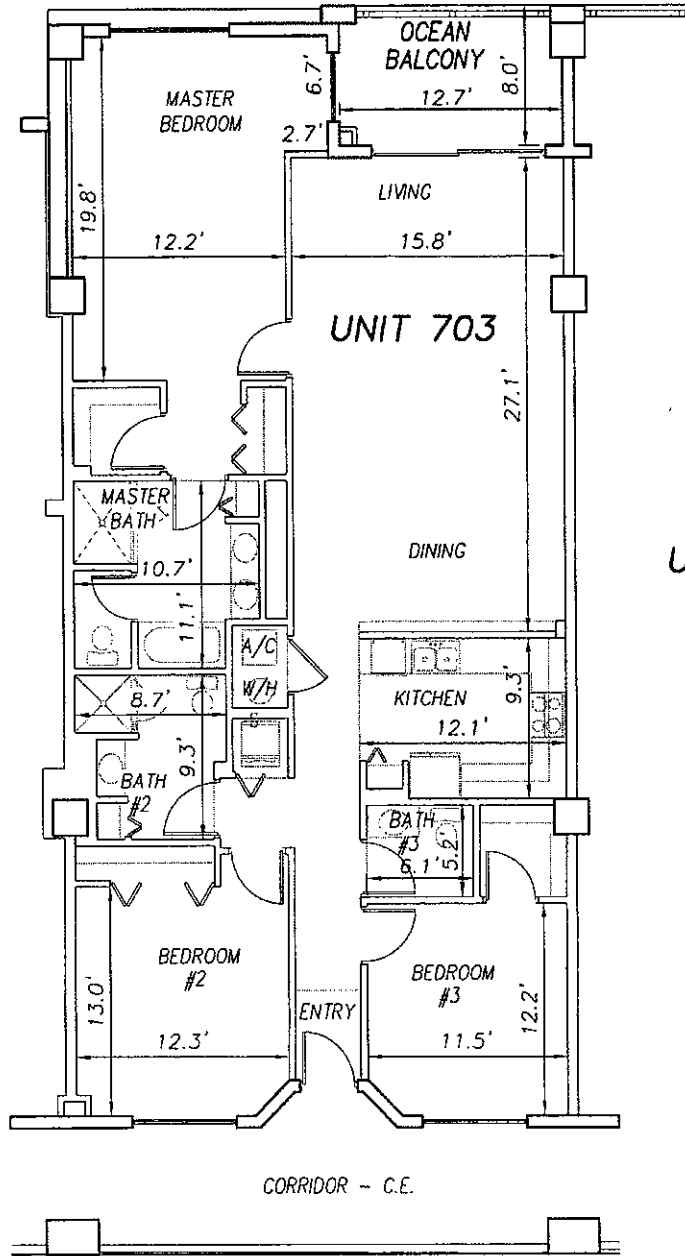
SHEET 165 OF 213 SHEETS

0 10 20

SCALE 1" = 10'

OFF REC 0983 PAGE 0327

EXHIBIT 'B'



UNIT 702

UNIT 704

**SURF CLUB II  
CONDOMINIUM**

SITUATED IN MATANZAS SHORES  
FLAGLER COUNTY, FLORIDA

**SEVENTH FLOOR - UNIT 703 (North Wing)**



**TOMOKA ENGINEERING**

CIVIL ENGINEERING & LAND SURVEYING SINCE 1976  
DAYTONA BEACH FLAGLER/PALM COAST  
Main Office: 900 So. Ridgewood Ave., Daytona Beach, FL 32114  
Phone: 386-257-1600 Fax: 386-257-1601  
email: tomoka@tomoka-eng.com website: www.tomoka@tomoka-eng.com

DATE ISSUED: 07/23/2003

JOB # T3070PCBW1

SHEET 166 OF 213 SHEETS

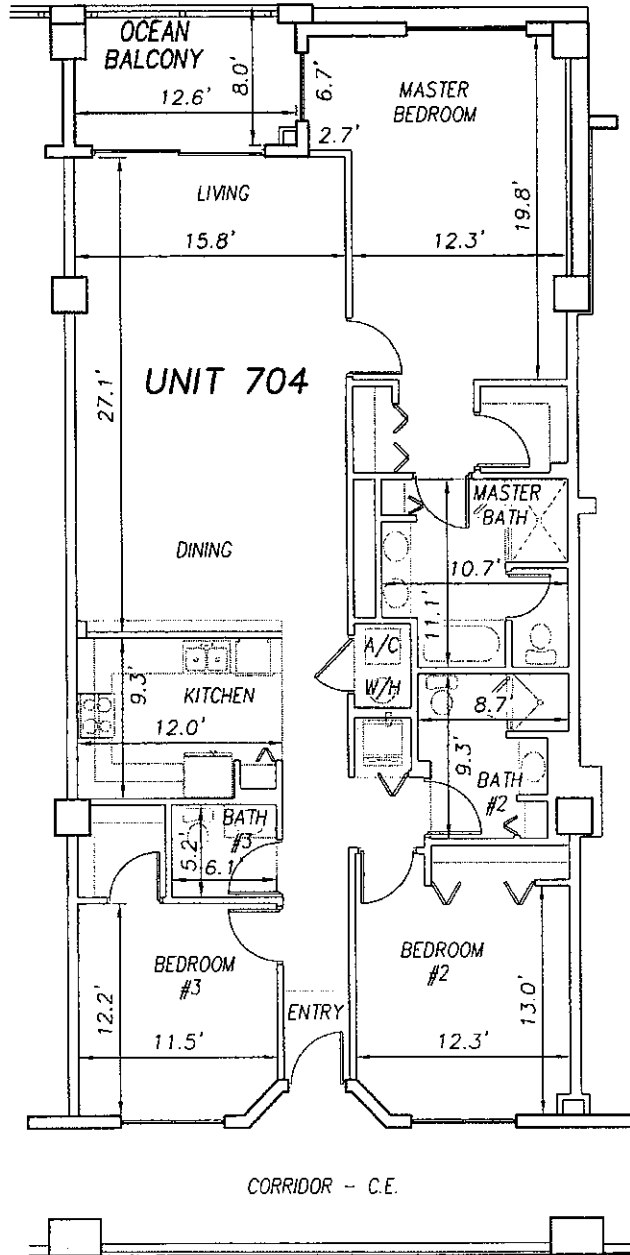
\\survey\12001\land projects\2003\T3070PCBW1\dwg\CONDO-sh 162 - 187 7th Fl.dwg 09/11/2003 09:21:10 AM EDT

0 10 20

SCALE 1" = 10'

OFF REC 0983 PAGE 0328

EXHIBIT 'B'



UNIT 703

UNIT 705

**SURF CLUB II  
CONDOMINIUM**

SITUATED IN MATANZAS SHORES  
FLAGLER COUNTY, FLORIDA

**SEVENTH FLOOR - UNIT 704 (North Wing)**



**TOMOKA ENGINEERING**

CIVIL ENGINEERING & LAND SURVEYING SINCE 1976  
DAYTONA BEACH FLAGLER/PALM COAST  
Main Office: 900 So. Ridgewood Ave., Daytona Beach, FL 32114  
Phone: 386-257-1600 Fax: 386-257-1601  
email: tomoka@tomoka-eng.com website: www.tomoka@tomoka-eng.com

DATE ISSUED: 07/23/2003

JOB # T3070PCBWI

SHEET 167 OF 213 SHEETS

\\survey\12001\land projects\12003\T3070PCBWI\dwg\CONDO-sh 162 - 187 7th Fl.dwg 09/11/2003 09:21:10 AM EDT

0 10 20

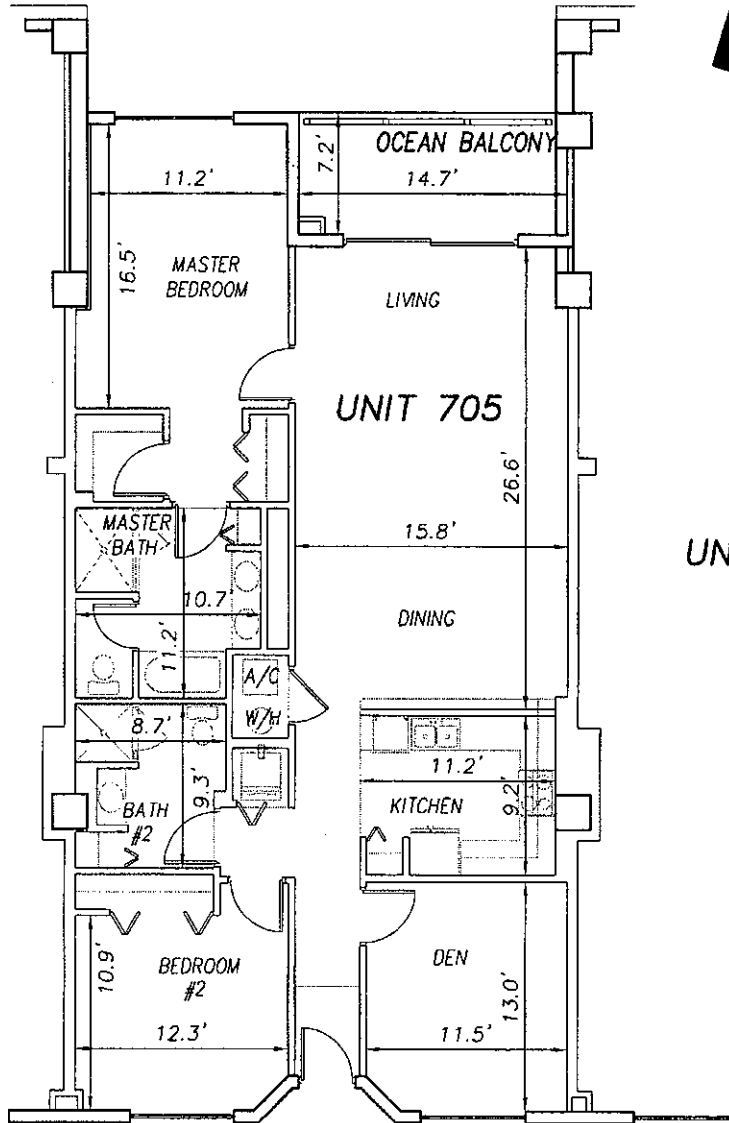
OFF REC 0983 PAGE 0329

EXHIBIT 'B'

SCALE 1" = 10'



UNIT 704

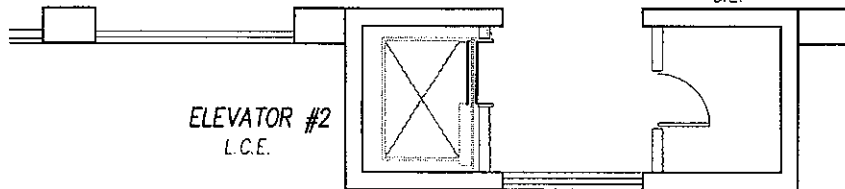


UNIT 706

CORRIDOR - C.E.

TELEPHONE/CABLE C.E.

ELEVATOR #2 L.C.E.



**SURF CLUB II  
CONDOMINIUM**

SITUATED IN MATANZAS SHORES  
FLAGLER COUNTY, FLORIDA

**SEVENTH FLOOR - UNIT 705 (North Wing)**



**TOMOKA ENGINEERING**

CIVIL ENGINEERING & LAND SURVEYING SINCE 1976  
DAYTONA BEACH FLAGLER/PALM COAST  
Main Office: 900 So. Ridgewood Ave., Daytona Beach, FL 32114  
Phone: 386-257-1600 Fax: 386-257-1601  
email: tomoka@tomoka-eng.com website: www.tomoka-tomoka-eng.com

DATE ISSUED: 07/23/2003

JOB # T3070PCBWI

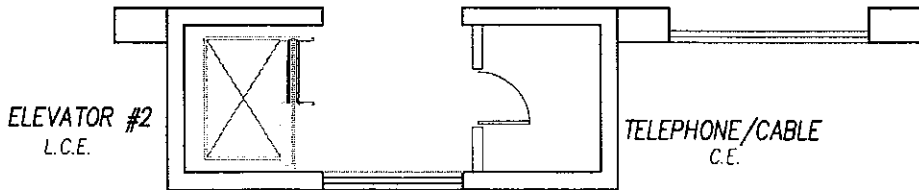
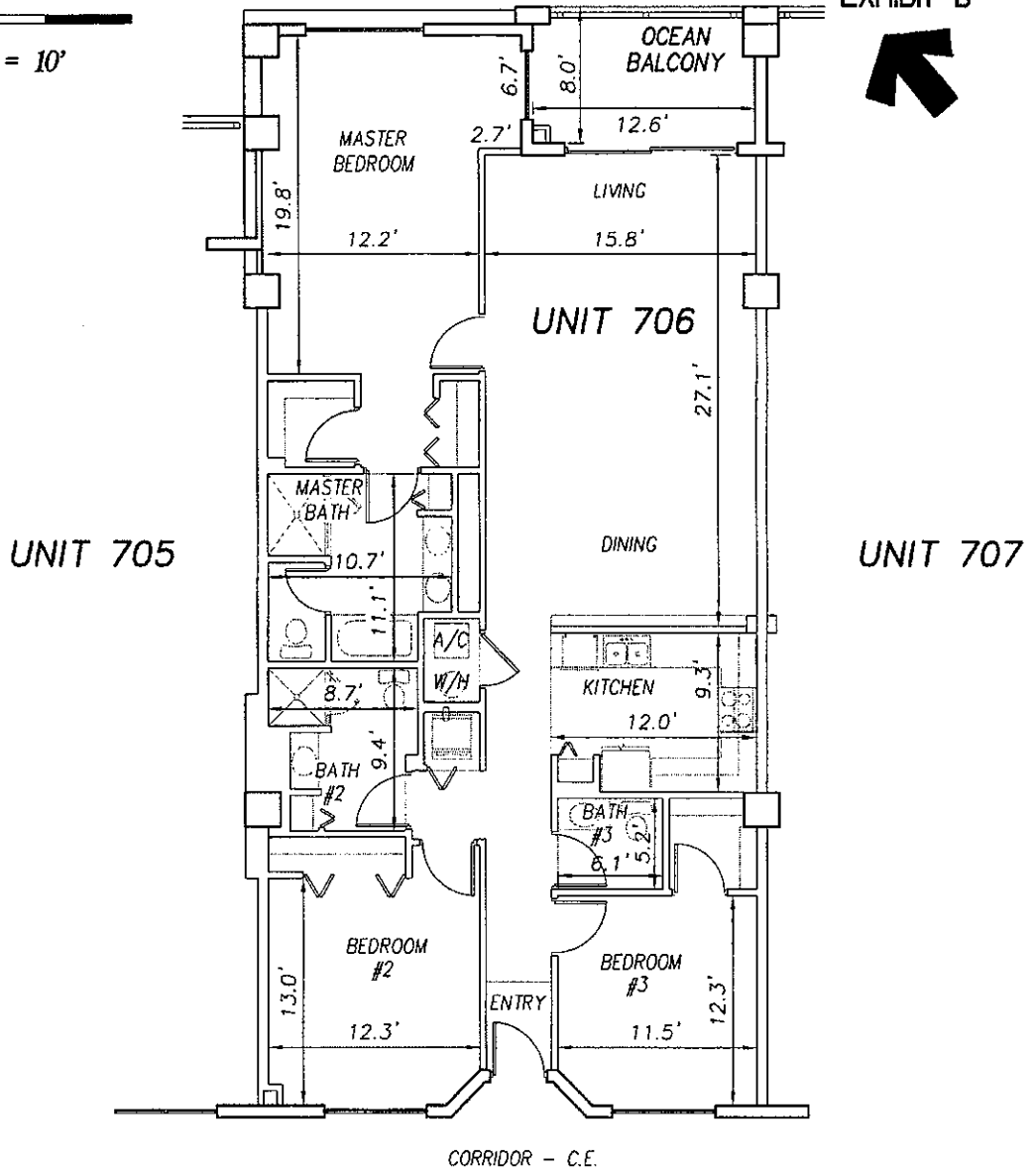
SHEET 168 OF 213 SHEETS

\\survey\12001\land projects\2003\T3070PCBWI\dwg\CONDO-sh 162 - 187 7th Fl.dwg 09/11/2003 09:21:10 AM EDT

0 10 20

SCALE 1" = 10'

EXHIBIT 'B'



**SURF CLUB II  
CONDOMINIUM**

SITUATED IN MATANZAS SHORES  
FLAGLER COUNTY, FLORIDA

**SEVENTH FLOOR - UNIT 706 (North Wing)**



**TOMOKA ENGINEERING**

CIVIL ENGINEERING & LAND SURVEYING SINCE 1976  
DAYTONA BEACH FLAGLER/PALM COAST  
Main Office: 900 So. Ridgewood Ave., Daytona Beach, FL 32114  
Phone: 386-257-1600 Fax: 386-257-1801  
email: tomoka@tomoka-eng.com website: www.tomoka@tomoka-eng.com

DATE ISSUED: 07/23/2003

JOB # T3070PCBWI

SHEET 169 OF 213 SHEETS

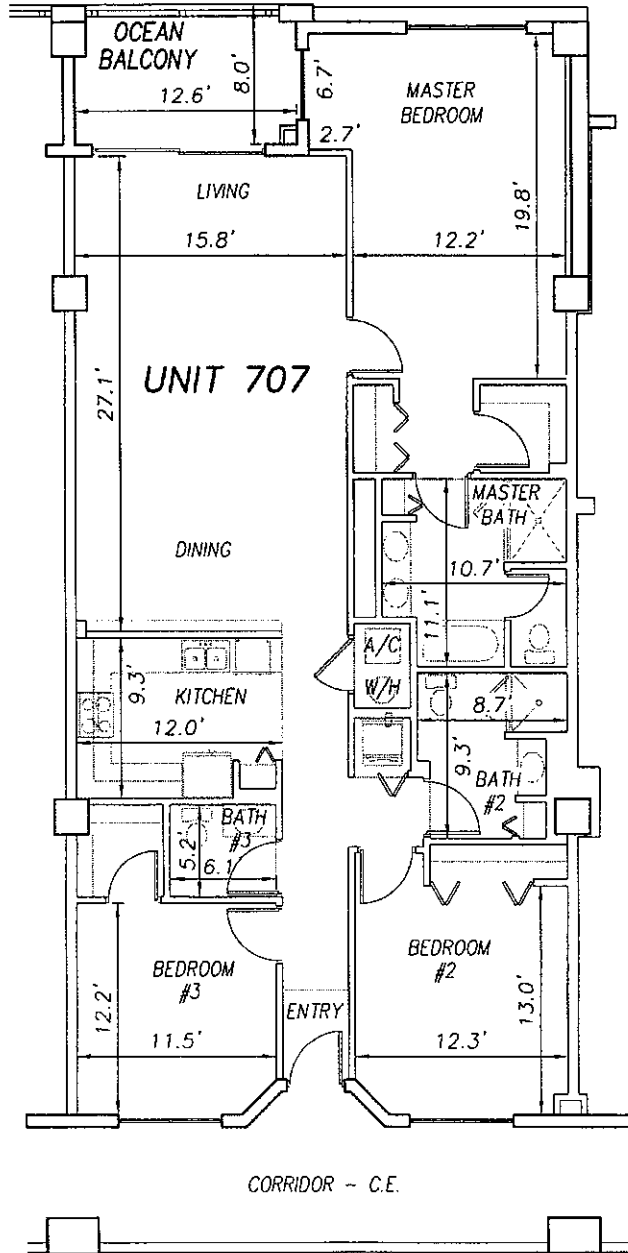
\\survey\2001\land projects\2003\T3070PCBWI\dwg\CONDO--sh 162 - 187 7th Fl.dwg 09/11/2003 09:21:10 AM EDT

0 10 20

SCALE 1" = 10'

OFF REC 0983 PAGE 0331

EXHIBIT 'B'



UNIT 706

UNIT 708

**SURF CLUB II  
CONDOMINIUM**

SITUATED IN MATANZAS SHORES  
FLAGLER COUNTY, FLORIDA

**SEVENTH FLOOR - UNIT 707 (North Wing)**



**TOMOKA ENGINEERING**

CIVIL ENGINEERING & LAND SURVEYING SINCE 1976  
DAYTONA BEACH FLAGLER/PALM COAST  
Main Office: 900 So. Ridgewood Ave., Daytona Beach, FL 32114  
Phone: 386-257-1600 Fax: 386-257-1601  
email: tomoka@tomoka-eng.com website: www.tomoka.com

DATE ISSUED: 07/23/2003

JOB # T3070PCBW1

SHEET 170 OF 213 SHEETS

\\survey\12001\land projects t2003\T3070PCBW1.dwg\CONDO-sh 182 - 187 7th Fl.dwg 09/11/2003 09:21:10 AM EDT