

0 10 20

SCALE 1" = 10'

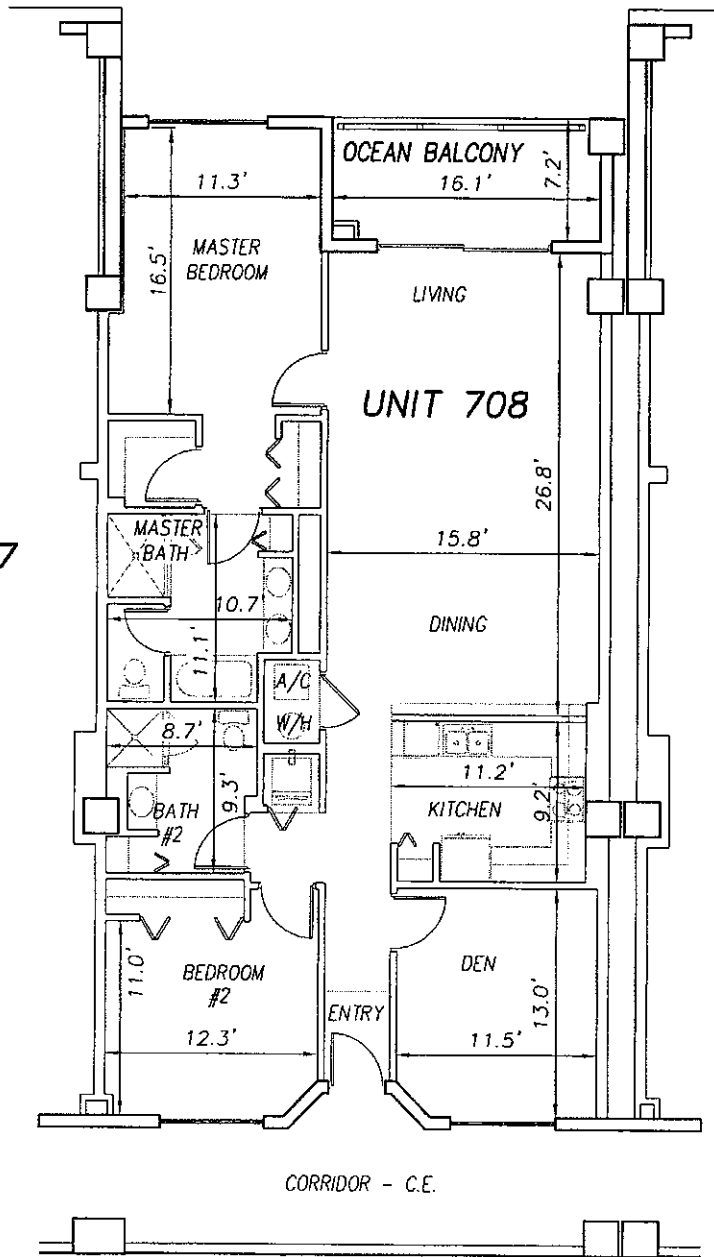
OFF REC 0983 PAGE 0332

EXHIBIT 'B'



UNIT 707

UNIT 709



**SURF CLUB II  
CONDOMINIUM**

SITUATED IN MATANZAS SHORES  
FLAGLER COUNTY, FLORIDA

**SEVENTH FLOOR - UNIT 708 (North Wing)**



**TOMOKA ENGINEERING**

CIVIL ENGINEERING & LAND SURVEYING SINCE 1976  
DAYTONA BEACH FLAGLER/PALM COAST

Main Office: 900 So. Ridgewood Ave., Daytona Beach, FL 32114  
Phone: 386-257-1600 Fax: 386-257-1601  
email: tomoka@tomoka-eng.com website: www.tomoka@tomoka-eng.com

DATE ISSUED: 07/23/2003

JOB # T3070PCBWI

SHEET 171 OF 213 SHEETS

\\survey\2001\land projects\2003\T3070PCBWI\dwg\CONDO-sh 162 -- 187 7th Fl.dwg 09/11/2003 09:21:10 AM EDT

0 10 20



SCALE 1" = 10'

OFF REC 0983 PAGE 0333

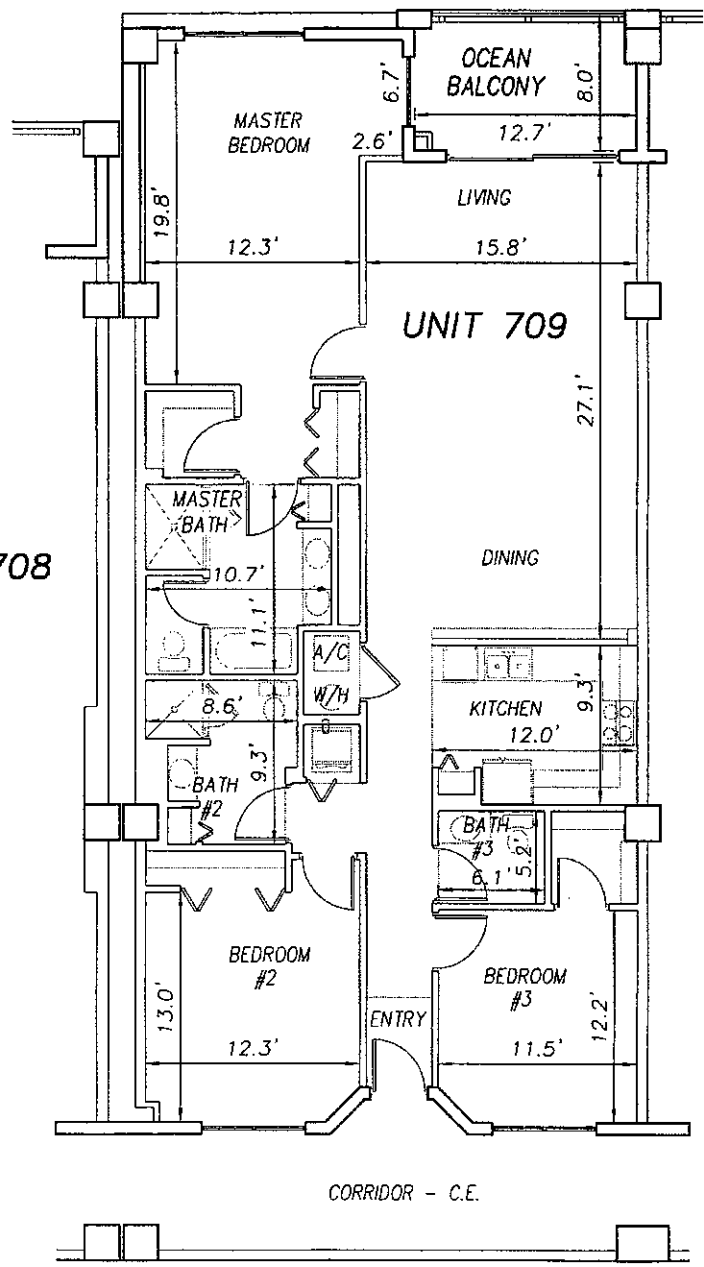
EXHIBIT 'B'



UNIT 708

UNIT 709

UNIT 710



\\survey\2001\land projects 12003\T3070PCBWI\dwg\CONDO-sh 162 - 187 7th Fl.dwg 09/11/2003 09:21:10 AM EDT

**SURF CLUB II**  
**CONDOMINIUM**  
 SITUATED IN MATANZAS SHORES  
 FLAGLER COUNTY, FLORIDA  
**SEVENTH FLOOR - UNIT 709 (North Wing)**



**TOMOKA ENGINEERING**  
 CIVIL ENGINEERING & LAND SURVEYING SINCE 1976  
 DAYTONA BEACH FLAGLER/PALM COAST  
 Main Office: 900 So. Ridgewood Ave., Daytona Beach, FL 32114  
 Phone: 386-257-1600 Fax: 386-257-1601  
 email: tomoka@tomoka-eng.com website: www.tomoka@tomoka-eng.com

DATE ISSUED: 07/23/2003

JOB # T3070PCBWI

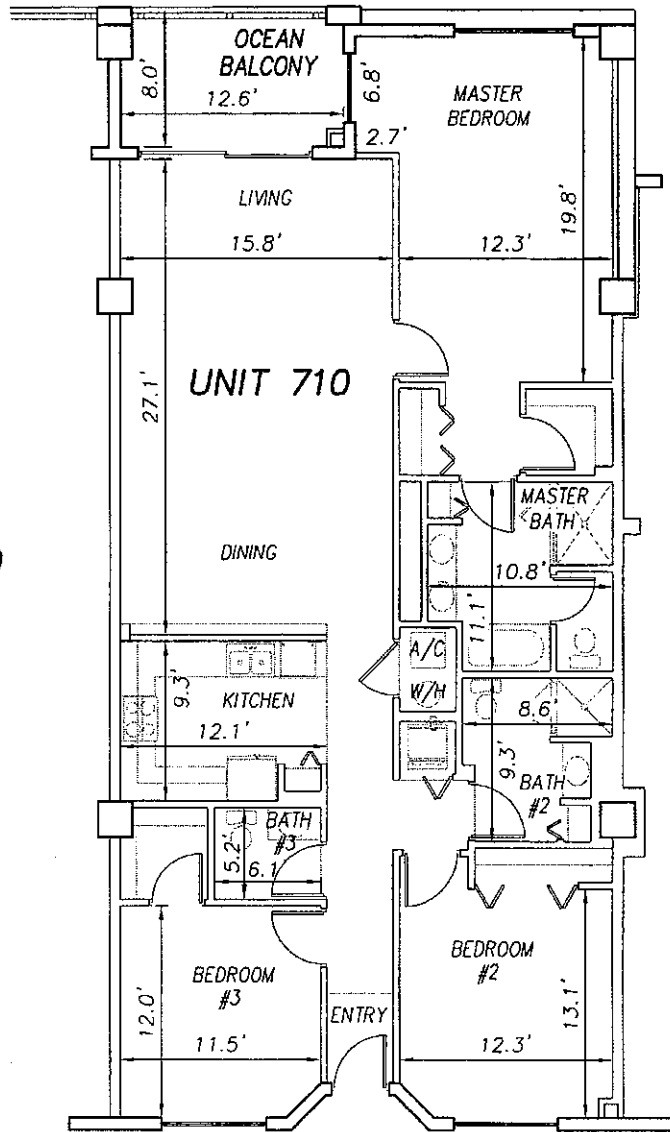
SHEET 172 OF 213 SHEETS

0 10 20

SCALE 1" = 10'

OFF REC 0983 PAGE 0334

EXHIBIT 'B'



UNIT 709

UNIT 710

UNIT 711

CORRIDOR - C.E.

SURF CLUB II  
CONDOMINIUM

SITUATED IN MATANZAS SHORES  
FLAGLER COUNTY, FLORIDA

SEVENTH FLOOR - UNIT 710 (North Wing)



**TOMOKA ENGINEERING**

CIVIL ENGINEERING & LAND SURVEYING SINCE 1976  
DAYTONA BEACH FLAGLER/PALM COAST  
Main Office: 900 So. Ridgewood Ave., Daytona Beach, FL 32114  
Phone: 386-257-1600 Fax: 386-257-1601  
mob: tomoka@tomoka-eng.com web site: www.tomoka@tomoka-eng.com

LB #2232

DATE ISSUED: 07/23/2003

JOB # T3070PCBWI

SHEET 173 OF 213 SHEETS

\\survey\2001\cond projects\2003\T3070PCBWI\dwg\CONDO-sh 162 - 187 7th Fl.dwg 09/11/2003 09:21:10 AM EDT

0 10 20

SCALE 1" = 10'

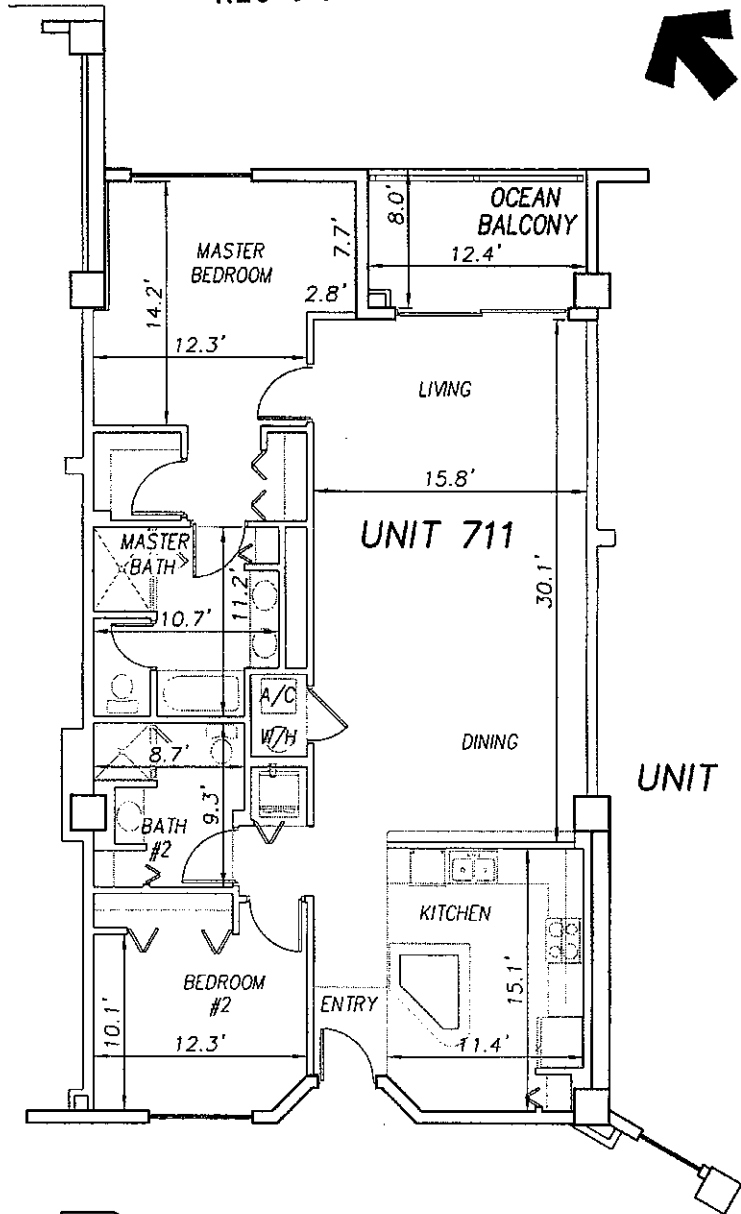
OFF REC 0983 PAGE 0335 EXHIBIT 'B'



UNIT 710

UNIT 711

UNIT 712



**SURF CLUB II  
CONDOMINIUM**

SITUATED IN MATANZAS SHORES  
FLAGLER COUNTY, FLORIDA

**SEVENTH FLOOR - UNIT 711 (North Wing)**



**TOMOKA ENGINEERING**

CIVIL ENGINEERING & LAND SURVEYING SINCE 1976  
DAYTONA BEACH FLAGLER/PALM COAST  
Main Office: 800 So. Ridgewood Ave., Daytona Beach, FL 32114  
Phone: 386-257-1600 Fax: 386-257-1601  
email: tomoka@tomoka-eng.com website: www.tomoka@tomoka-eng.com

DATE ISSUED: 07/23/2003

JOB # T3070PCBWI

SHEET 174 OF 213 SHEETS

\\survey\12001\land projects 12003\T3070PCBWI\dwg\CONDO-sh 162 - 187 7th Fl.dwg 09/11/2003 09:21:10 AM EDT

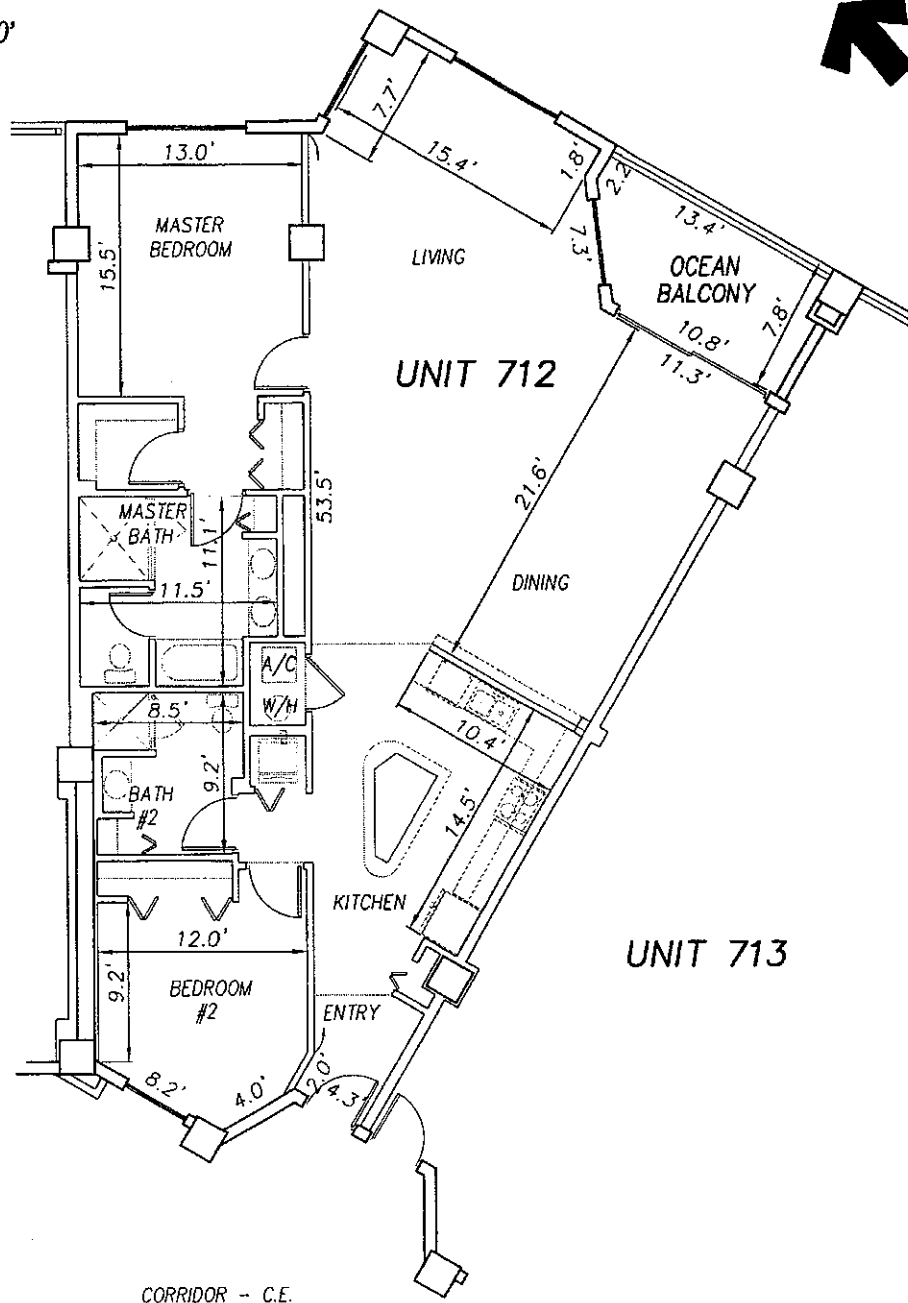
0 10 20

SCALE 1" = 10'

OFF REC 0983 PAGE 0336 EXHIBIT 'B'



UNIT 711



UNIT 713

\\survey\2001\cond projects\2003\T3070PCBWI\dwg\CONDO--sh 162 - 187 7th Fl.dwg 09/11/2003 09:21:10 AM EDT

**SURF CLUB II  
CONDOMINIUM**  
SITUATED IN MATANZAS SHORES  
FLAGLER COUNTY, FLORIDA  
**SEVENTH FLOOR - UNIT 712 (North Wing)**



**TOMOKA ENGINEERING**  
CIVIL ENGINEERING & LAND SURVEYING SINCE 1978  
DAYTONA BEACH FLAGLER/PALM COAST  
Main Office: 900 So. Ridgewood Ave., Daytona Beach, FL 32114  
Phone: 386-257-1500 Fax: 386-257-1501  
email: tomoka@tomoka-eng.com web site: www.tomokafromake-eng.com

DATE ISSUED: 07/23/2003

JOB # T3070PCBWI

SHEET 175 OF 213 SHEETS

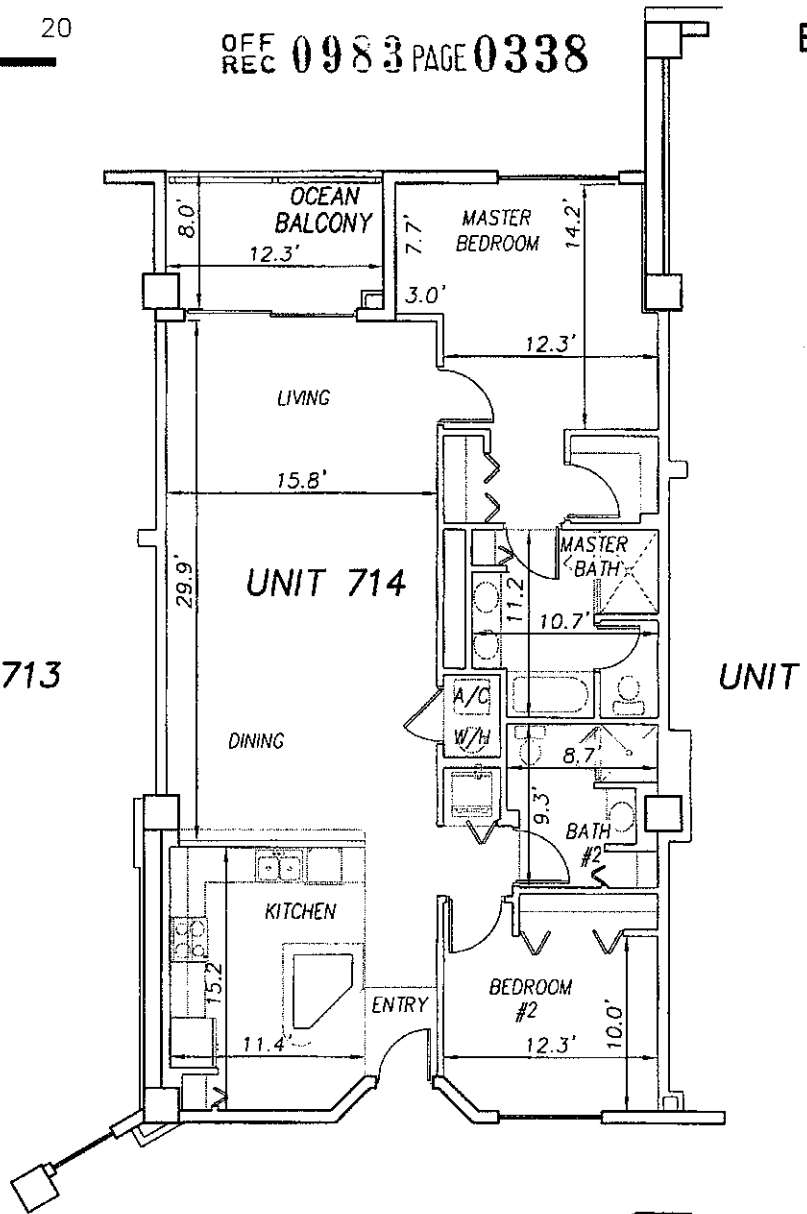


0 10 20

SCALE 1" = 10'

OFF REC 0983 PAGE 0338

EXHIBIT 'B'

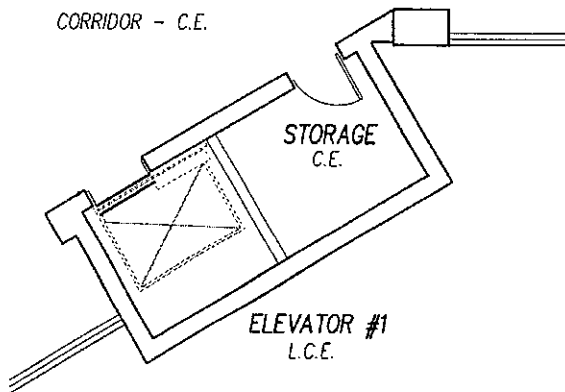


CORRIDOR - C.E.

**SURF CLUB II  
CONDOMINIUM**

SITUATED IN MATANZAS SHORES  
FLAGLER COUNTY, FLORIDA

**SEVENTH FLOOR - UNIT 714 (South Wing)**



**TOMOKA ENGINEERING**

CIVIL ENGINEERING & LAND SURVEYING SINCE 1976  
DAYTONA BEACH FLAGLER/PALM COAST  
Main Office: 900 So. Ridgewood Ave., Daytona Beach, FL 32114  
Phone: 386-257-1600 Fax: 386-257-1601  
email: tomoka@tomoka-eng.com website: www.tomoka-engineering.com

DATE ISSUED: 07/23/2003

JOB # T3070PCBW1

SHEET 177 OF 213 SHEETS

\\survey\2001\land projects\2003\T3070PCBW1\dwg\CONDO-sh 162 - 187 7th Fl.dwg 09/11/2003 09:21:10 AM EDT

0 10 20

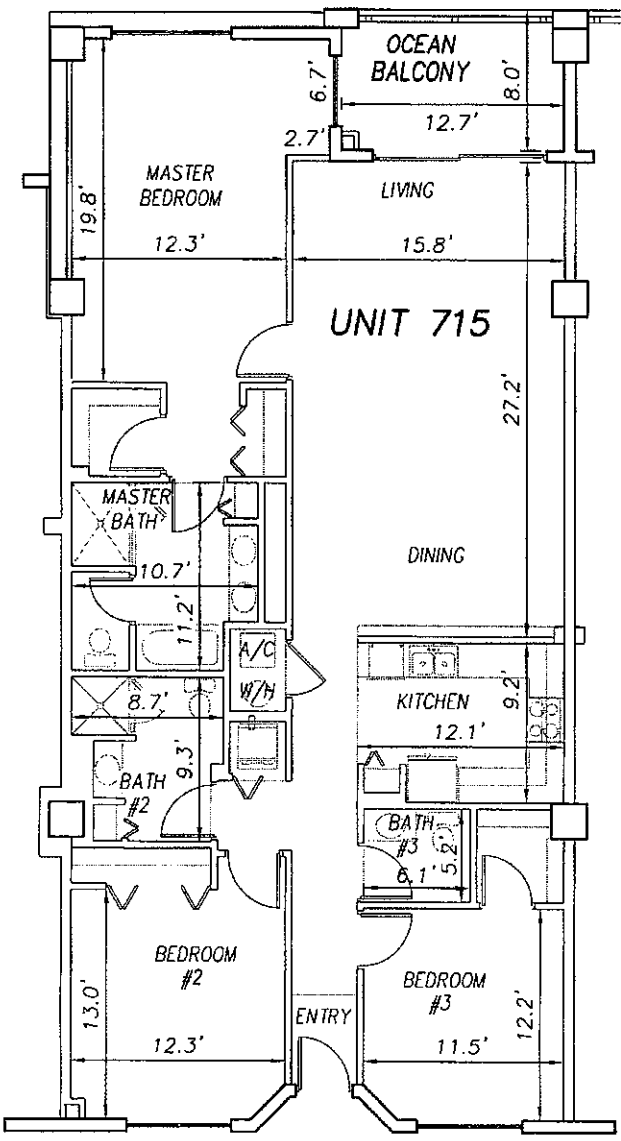
SCALE 1" = 10'

OFF REC 0983 PAGE 0339

EXHIBIT 'B'

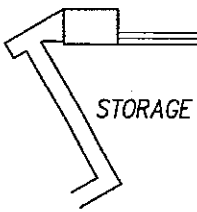


UNIT 714



UNIT 716

CORRIDOR - C.E.



**SURF CLUB II  
CONDOMINIUM**

SITUATED IN MATANZAS SHORES  
FLAGLER COUNTY, FLORIDA

**SEVENTH FLOOR - UNIT 715 (South Wing)**



**TOMOKA ENGINEERING**

CIVIL ENGINEERING & LAND SURVEYING SINCE 1976  
DAYTONA BEACH FLAGLER/PALM COAST  
Main Office: 900 So. Ridgewood Ave., Daytona Beach, FL 32114  
Phone: 386-257-1800 Fax: 386-257-1601  
email: tomoka@tomoka-eng.com website: www.tomoka@tomoka-eng.com

DATE ISSUED: 07/23/2003

JOB # T3070PCBWI

SHEET 178 OF 213 SHEETS

\\survey\12001\cond projects\12003\T3070PCBWI\dwg\CONDO-sh 162 - 187 7th Fl.dwg 09/11/2003 09:21:10 AM EDT

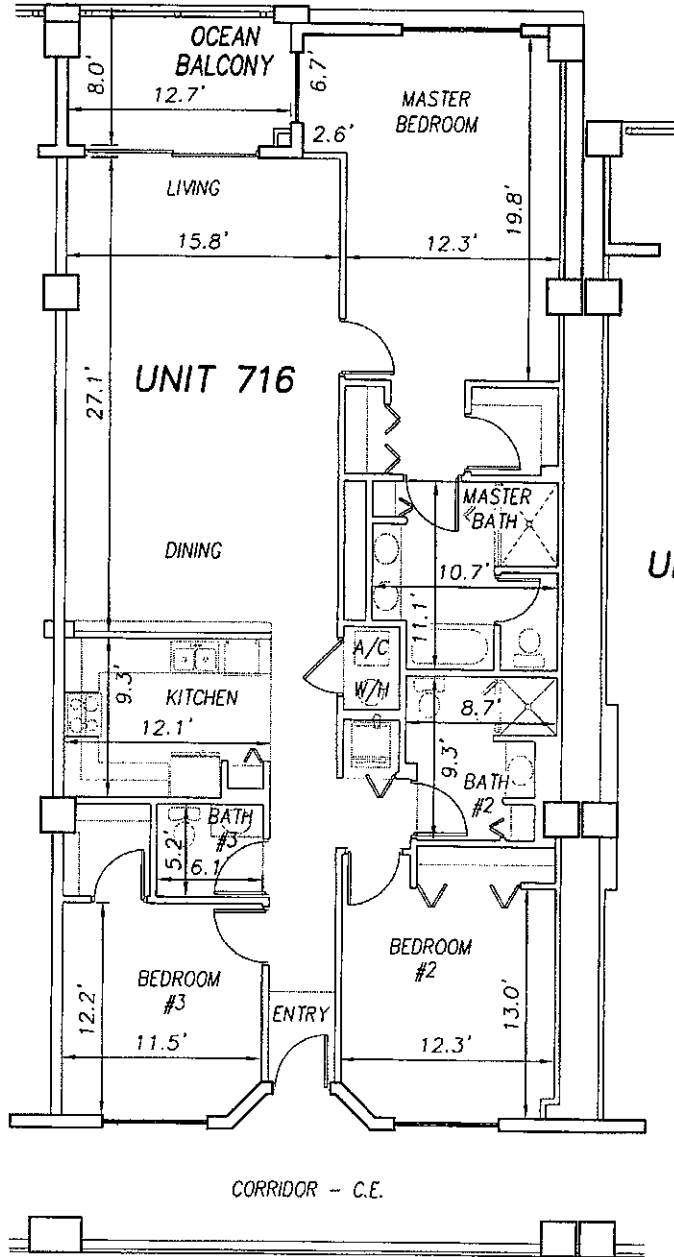


0 10 20

OFF REC 0983 PAGE 0340

EXHIBIT 'B'

SCALE 1" = 10'



UNIT 715

UNIT 716

UNIT 717

CORRIDOR - C.E.

**SURF CLUB II  
CONDOMINIUM**

SITUATED IN MATANZAS SHORES  
FLAGLER COUNTY, FLORIDA

**SEVENTH FLOOR - UNIT 716 (South Wing)**



**TOMOKA ENGINEERING**

CIVIL ENGINEERING & LAND SURVEYING SINCE 1976  
DAYTONA BEACH FLAGLER/PALM COAST

Main Office: 900 So. Ridgewood Ave., Daytona Beach, FL 32114  
Phone: 386-257-1600 Fax: 386-257-1601

email: tomoka@tomoka-eng.com website: www.tomoka@tomoka-eng.com

LB 1732

DATE ISSUED: 07/23/2003

JOB # T3070PCBWI

SHEET 179 OF 213 SHEETS

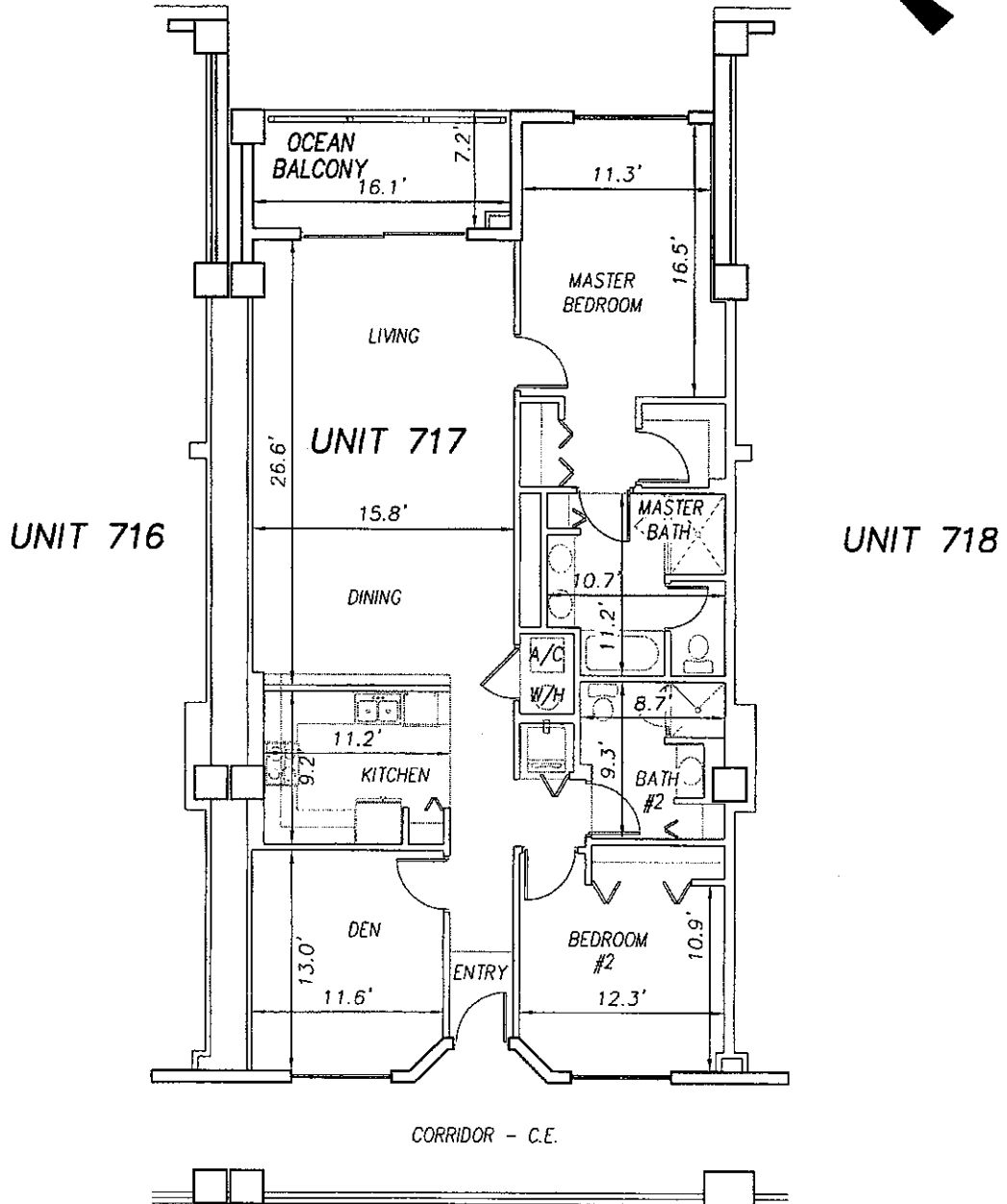
\\survey\2001\land projects t2003\T3070PCBWI\dwg\CONDO-sh 162 - 187 7th Fl.dwg 09/11/2003 09:21:10 AM EDT

0 10 20

SCALE 1" = 10'

OFF REC 0983 PAGE 0341

EXHIBIT 'B'



\\survey\2001\land projects t2003\T3070PCBW\dwg\CONDO-sh 162 - 187 7th Fl.dwg 09/11/2003 09:21:10 AM EDT

**SURF CLUB II**  
**CONDOMINIUM**  
 SITUATED IN MATANZAS SHORES  
 FLAGLER COUNTY, FLORIDA  
**SEVENTH FLOOR - UNIT 717 (South Wing)**



**TOMOKA ENGINEERING**  
 CIVIL ENGINEERING & LAND SURVEYING SINCE 1976  
 DAYTONA BEACH FLAGLER/PALM COAST  
 Main Office: 900 So. Ridgewood Ave., Daytona Beach, FL 32114  
 Phone: 386-257-1800 Fax: 386-257-1601  
 email: tomoka@tomoka-eng.com website: www.tomoka@tomoka-eng.com

DATE ISSUED: 07/23/2003

JOB # T3070PCBW1

SHEET 180 OF 213 SHEETS

0 10 20

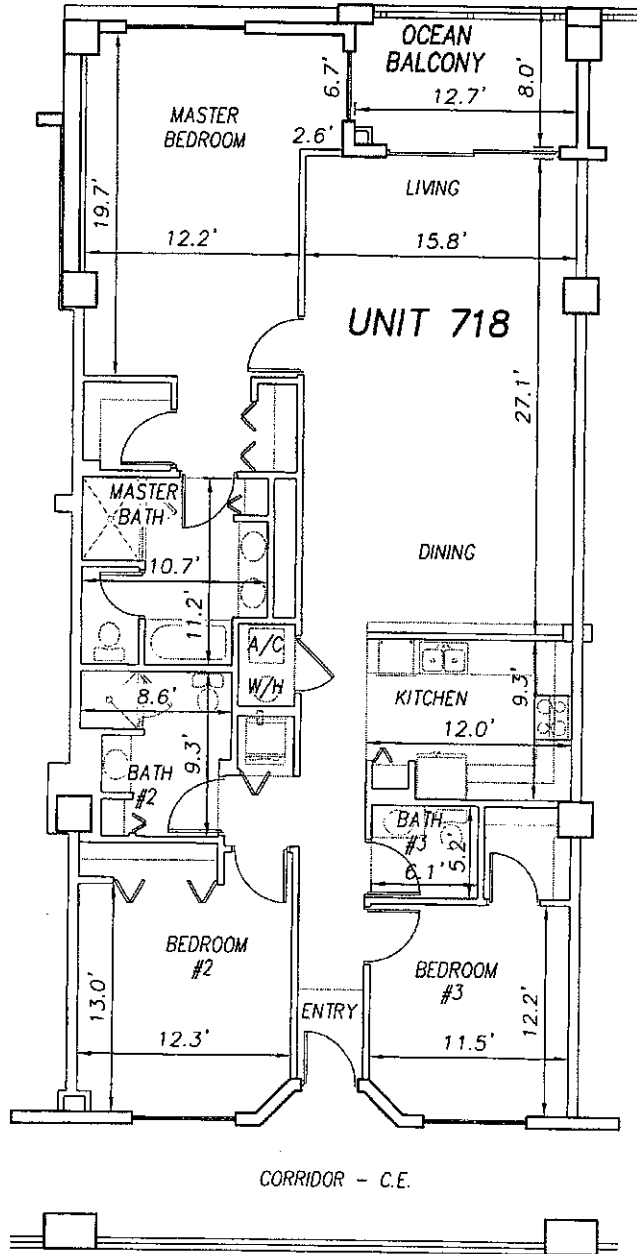


SCALE 1" = 10'

OFF REC 0983 PAGE 0342 EXHIBIT 'B'



UNIT 717



UNIT 719

\\survey\2001\cond projects 12003\T3070PCBWI\dwg\CONDO-sh 162 - 187 7th Fl.dwg 09/11/2003 09:21:10 AM EDT

**SURF CLUB II**  
**CONDOMINIUM**  
 SITUATED IN MATANZAS SHORES  
 FLAGLER COUNTY, FLORIDA  
**SEVENTH FLOOR - UNIT 718 (South Wing)**



**TOMOKA ENGINEERING**  
 CIVIL ENGINEERING & LAND SURVEYING SINCE 1976  
 DAYTONA BEACH FLAGLER/PALM COAST  
 Main Office: 900 So. Ridgewood Ave., Daytona Beach, FL 32114  
 Phone: 386-257-1600 Fax: 386-257-1801  
 e-mail: tomoka@tomoka-eng.com website: www.tomoka-engineering.com

DATE ISSUED: 07/23/2003

JOB # T3070PCBWI

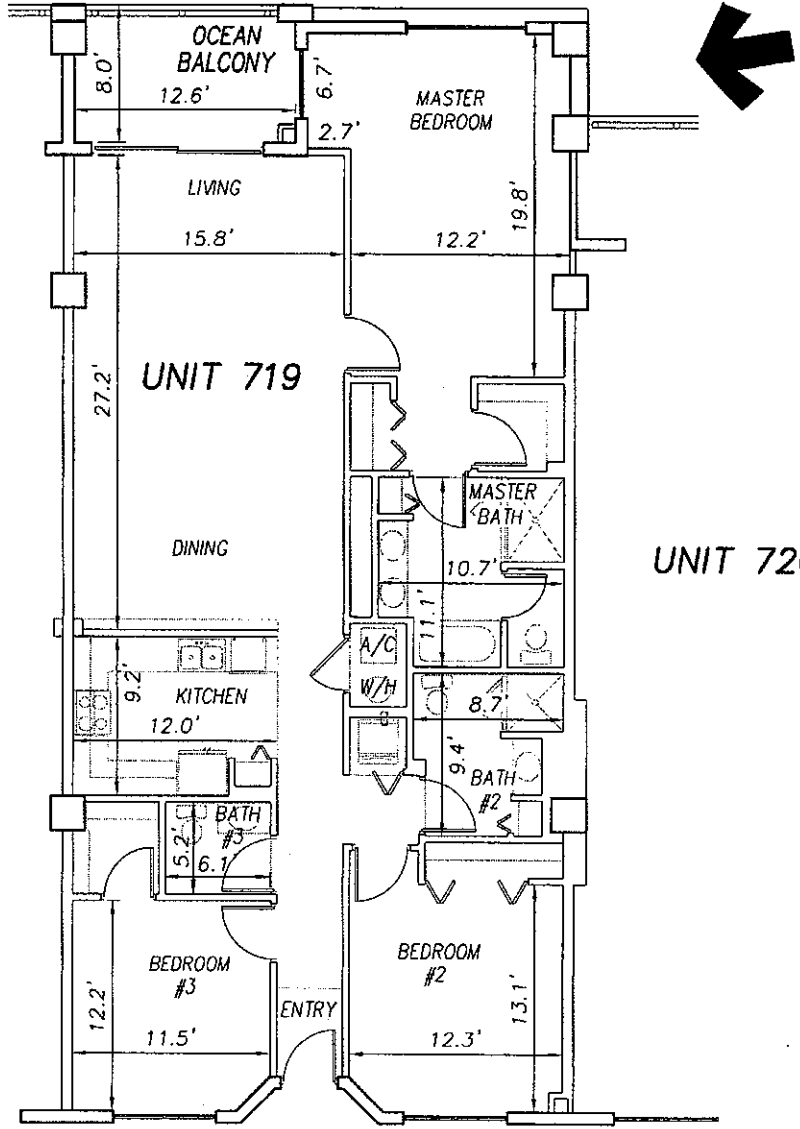
SHEET 181 OF 213 SHEETS

0 10 20

OFF REC 0983 PAGE 0343

EXHIBIT 'B'

SCALE 1" = 10'

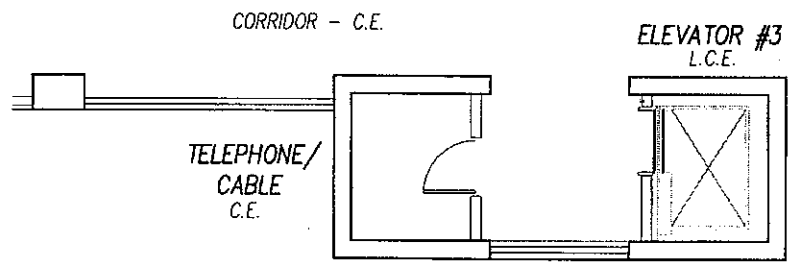


UNIT 718

UNIT 719

UNIT 720

\\survey\12001\land projects t2003\T3070PCBW\dwg\CONDO--sh 162 - 187 7th Fl.dwg 09/11/2003 09:21:10 AM EDT



**SURF CLUB II**  
**CONDOMINIUM**  
SITUATED IN MATANZAS SHORES  
FLAGLER COUNTY, FLORIDA  
**SEVENTH FLOOR - UNIT 719 (South Wing)**



**TOMOKA ENGINEERING**  
CIVIL ENGINEERING & LAND SURVEYING SINCE 1976  
DAYTONA BEACH FLAGLER/PALM COAST  
Main Office: 900 So. Ridgewood Ave., Daytona Beach, FL 32114  
Phone: 386-257-1600 Fax: 386-257-1501  
email: tomoka@tomoka-eng.com website: www.tomoka@tomoka-eng.com

DATE ISSUED: 07/23/2003

JOB # T3070PCBW1

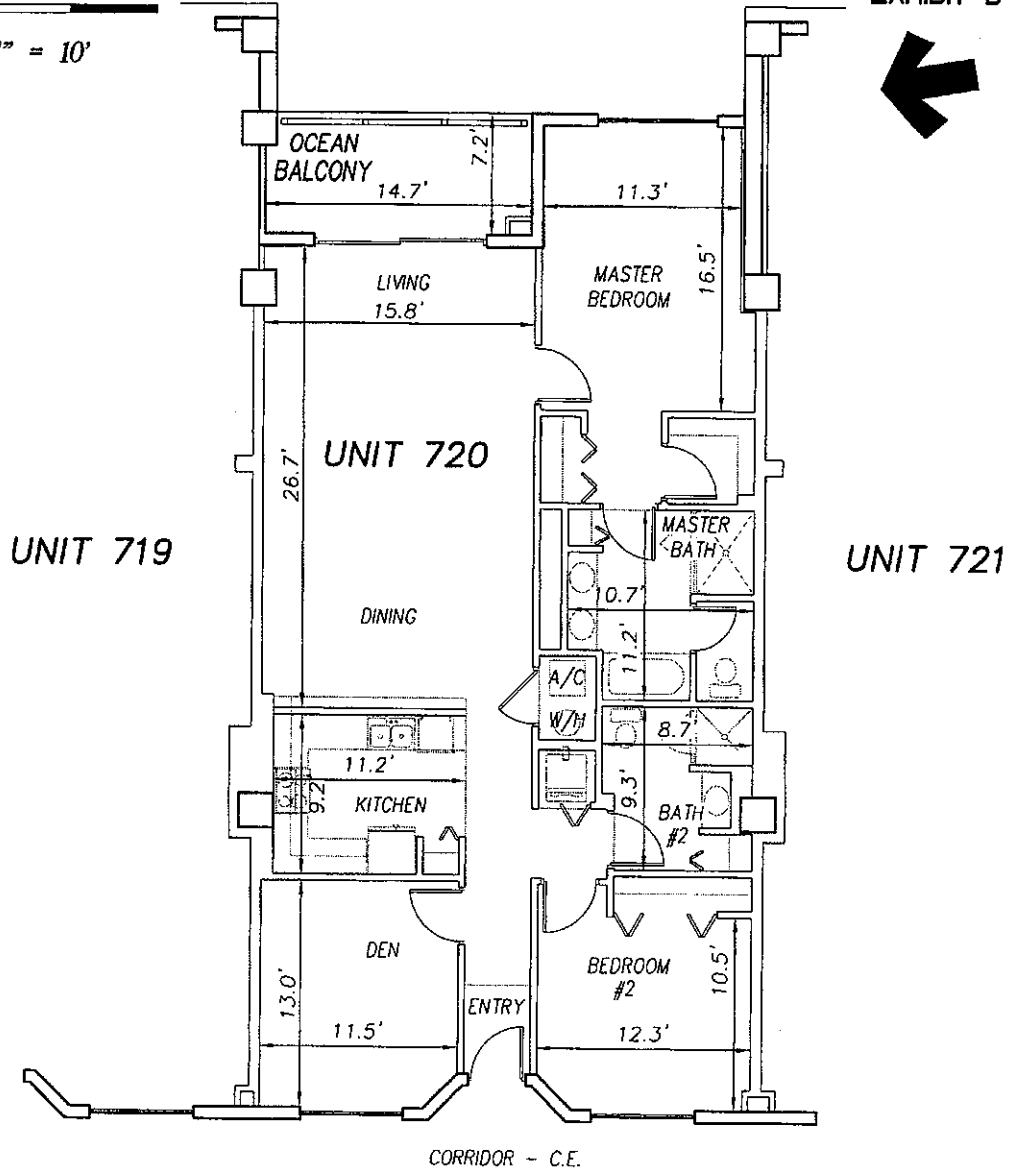
SHEET 182 OF 213 SHEETS

0 10 20

SCALE 1" = 10'

OFF REC 0983 PAGE 0344

EXHIBIT 'B'



TELEPHONE/  
CABLE  
C.E.

ELEVATOR #3  
L.C.E.

**SURF CLUB II  
CONDOMINIUM**  
SITUATED IN MATANZAS SHORES  
FLAGLER COUNTY, FLORIDA  
**SEVENTH FLOOR - UNIT 720 (South Wing)**



**TOMOKA ENGINEERING**  
CIVIL ENGINEERING & LAND SURVEYING SINCE 1976  
DAYTONA BEACH FLAGLER/PALM COAST  
Main Office: 900 So. Ridgewood Ave., Daytona Beach, FL 32114  
Phone: 386-257-1600 Fax: 386-257-1601  
Email: tomako@tomoko-mp.com website: www.tomoko@tomoko-mp.com

DATE ISSUED: 07/23/2003

JOB # T3070PCBW1

SHEET 183 OF 213 SHEETS

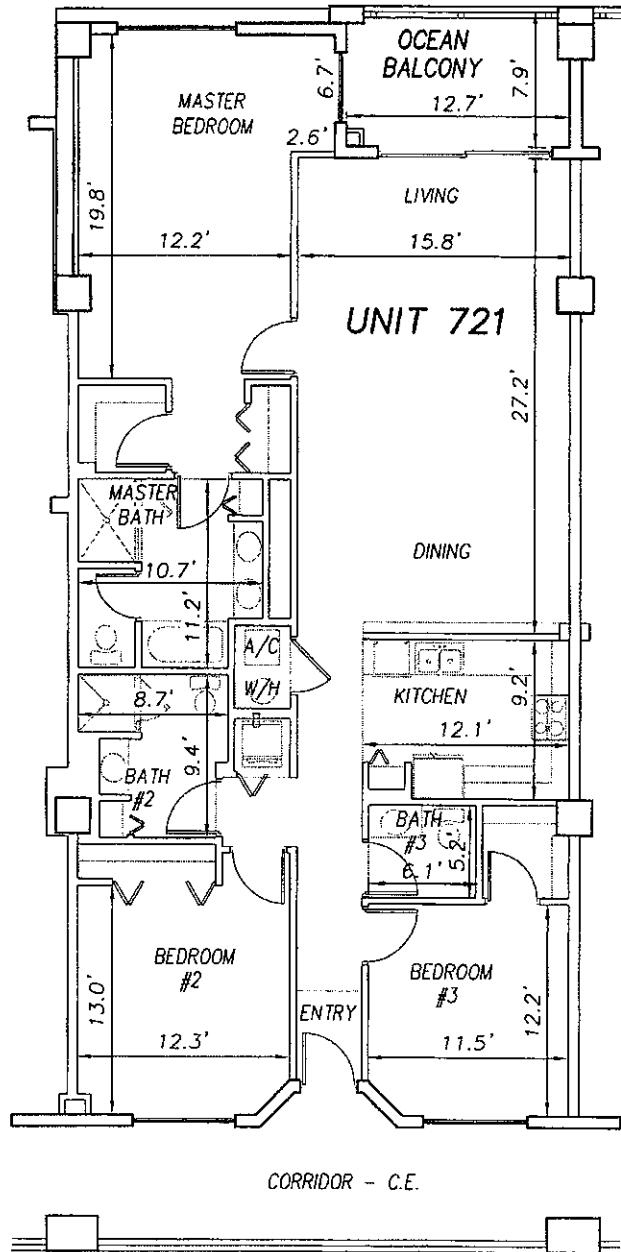
\\survey\12001\land projects\2003\T3070PCBW1.dwg\CONDO-sh 162 - 187 7th Fl.dwg 09/11/2003 09:21:10 AM EDT

0 10 20

SCALE 1" = 10'

OFF REC 0983 PAGE 0345

EXHIBIT 'B'



UNIT 720

UNIT 722

CORRIDOR - C.E.

**SURF CLUB II  
CONDOMINIUM**

SITUATED IN MATANZAS SHORES  
FLAGLER COUNTY, FLORIDA

**SEVENTH FLOOR - UNIT 721 (South Wing)**



**TOMOKA ENGINEERING**

CIVIL ENGINEERING & LAND SURVEYING SINCE 1976  
DAYTONA BEACH FLAGLER/PALM COAST

Main Office: 900 So. Ridgewood Ave., Daytona Beach, FL 32114  
Phone: 386-257-1600 Fax: 386-257-1601  
e-mail: tomoka@tomoka-eng.com website: www.tomoka@tomoka-eng.com

LB #2332

DATE ISSUED: 07/23/2003

JOB # T3070PCBWI

SHEET 184 OF 213 SHEETS

\\survey\2001\cond projects\2003\T3070PCBWI\dwg\CONDO-sh 162 - 187 7th Fl.dwg 09/11/2003 09:21:10 AM EDT

0 10 20



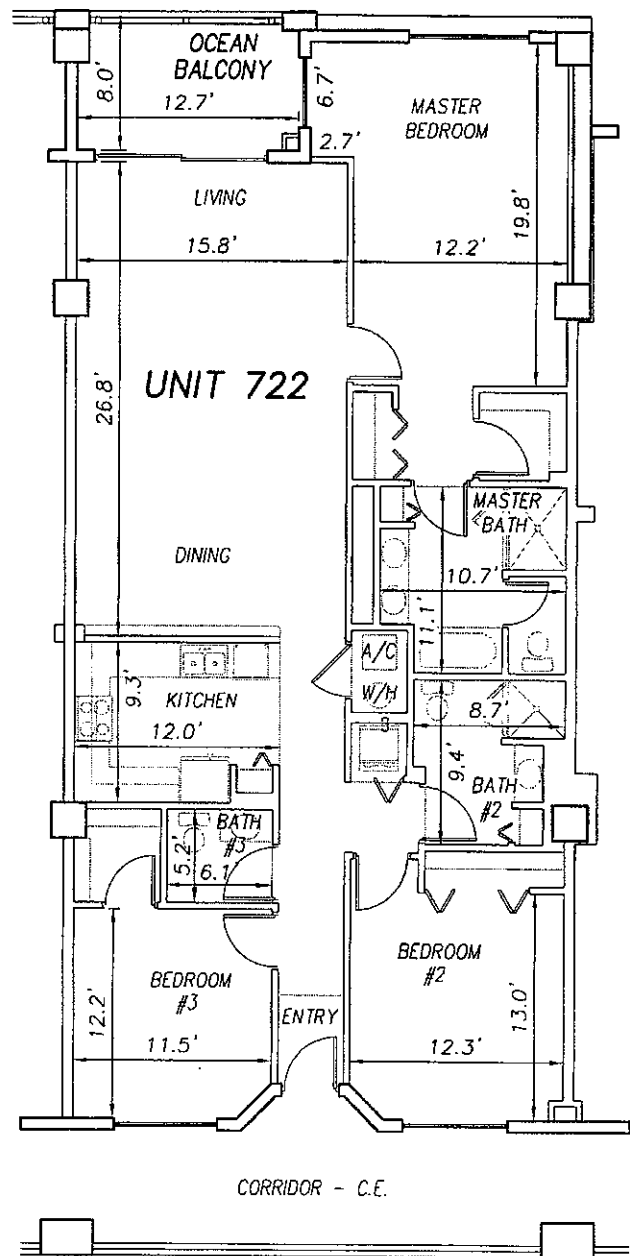
SCALE 1" = 10'

OFF REC 0983 PAGE 0346

EXHIBIT 'B'



UNIT 721



UNIT 723

**SURF CLUB II  
CONDOMINIUM**

SITUATED IN MATANZAS SHORES  
FLAGLER COUNTY, FLORIDA

**SEVENTH FLOOR - UNIT 722 (South Wing)**



**TOMOKA ENGINEERING**

CIVIL ENGINEERING & LAND SURVEYING SINCE 1976  
DAYTONA BEACH FLAGLER/PALM COAST

Main Office: 900 So. Ridgewood Ave., Daytona Beach, FL 32114  
Phone: 386-257-1900 Fax: 386-257-1501  
email: tomoka@tomoka-eng.com website: www.tomoka@tomoka-eng.com

DATE ISSUED: 07/23/2003

JOB # T3070PCBWI

SHEET 185 OF 213 SHEETS

\\survey\2001\land projects\2003\T3070PCBWI\dwg\CONDO-sh 162 - 187 7th Fl.dwg 09/11/2003 09:21:10 AM EDT

0 10 20

SCALE 1" = 10'

OFF REC 0983 PAGE 0347

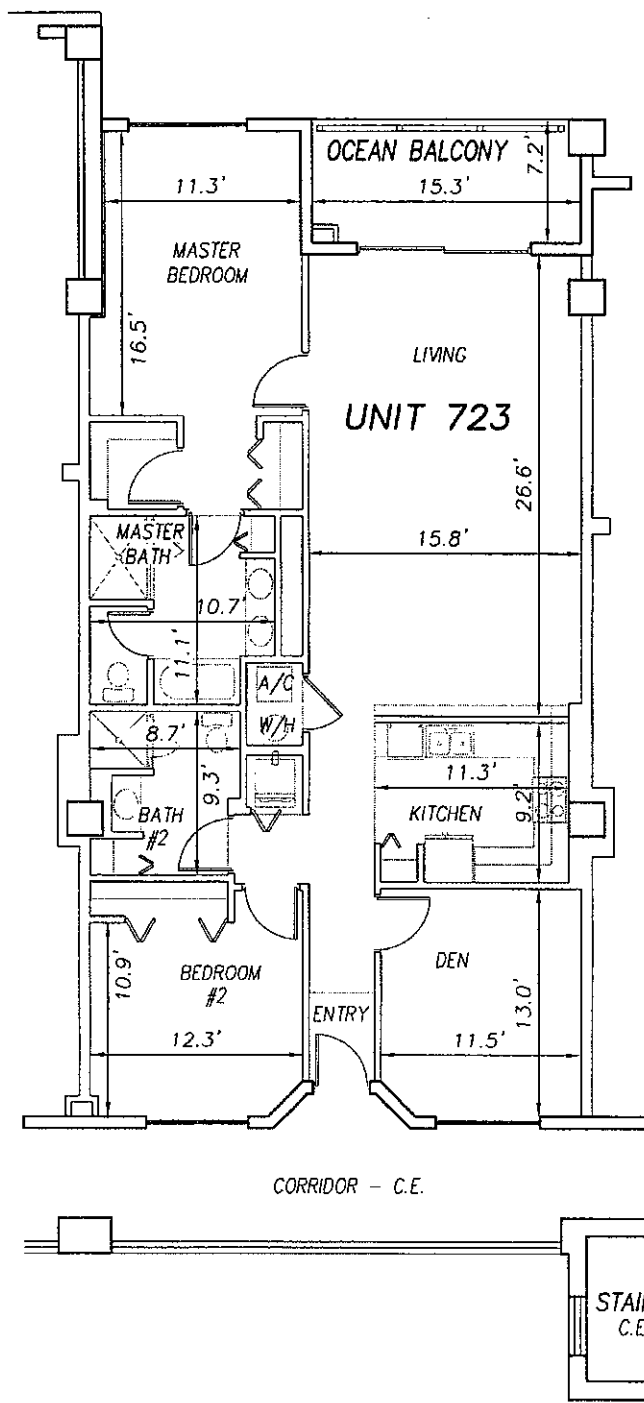
EXHIBIT 'B'



UNIT 722

UNIT 723

UNIT 724



\\survey\2001\land projects\2003\T3070PCBW\dwg\CONDO-sh 162 - 187 7th Fl.dwg 09/11/2003 09:21:10 AM EDT

**SURF CLUB II  
CONDOMINIUM**

SITUATED IN MATANZAS SHORES  
FLAGLER COUNTY, FLORIDA

**SEVENTH FLOOR - UNIT 723 (South Wing)**



**TOMOKA ENGINEERING**

CIVIL ENGINEERING & LAND SURVEYING SINCE 1976  
DAYTONA BEACH FLAGLER/PALM COAST

Main Office: 900 So. Ridgewood Ave., Daytona Beach, FL 32114  
Phone: 386-257-1500 Fax: 386-257-1501  
email: tomoka@tomoka-eng.com website: www.tomoka-engineering.com

DATE ISSUED: 07/23/2003

JOB # T3070PCBW1

SHEET 186 OF 213 SHEETS



0 10 20

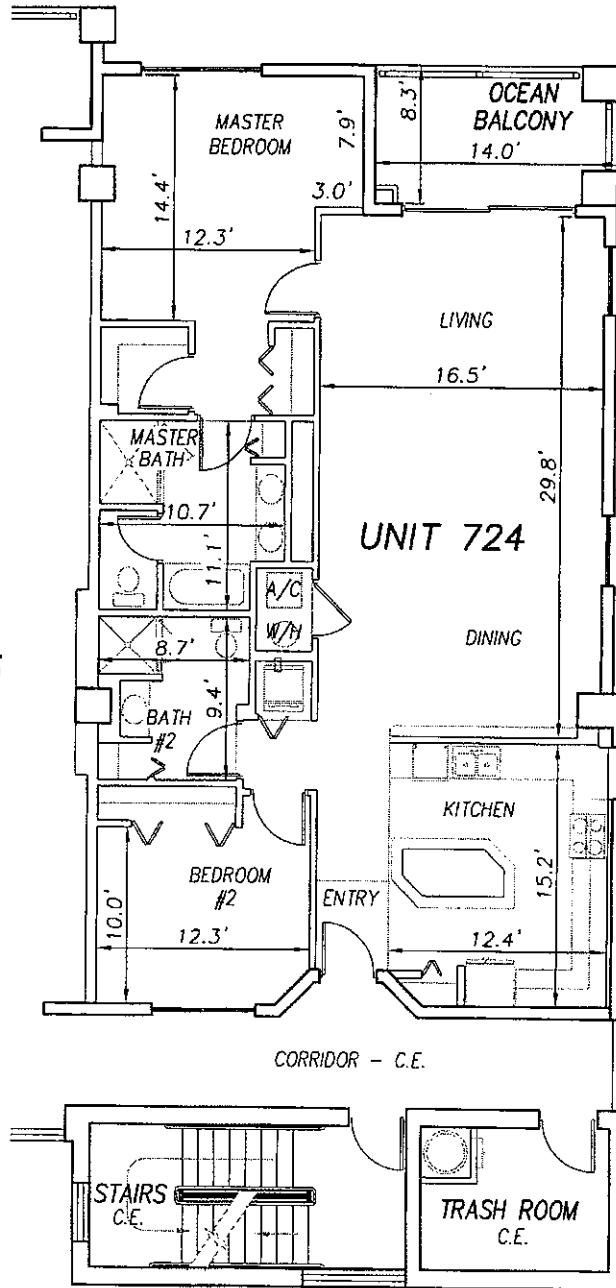
SCALE 1" = 10'

OFF REC 0983 PAGE 0348

EXHIBIT 'B'



UNIT 723



**SURF CLUB II  
CONDOMINIUM**

SITUATED IN MATANZAS SHORES  
FLAGLER COUNTY, FLORIDA

**SEVENTH FLOOR - UNIT 724 (South Wing)**



**TOMOKA ENGINEERING**

CIVIL ENGINEERING & LAND SURVEYING SINCE 1976  
DAYTONA BEACH FLAGLER/PALM COAST

Main Office: 900 So. Ridgewood Ave., Daytona Beach, FL 32114  
Phone: 386-257-1600 Fax: 386-257-1601  
email: tomoka@tomoka-eng.com website: www.tomoka@tomoka-eng.com

DATE ISSUED: 07/23/2003

JOB # T3070PCBWI

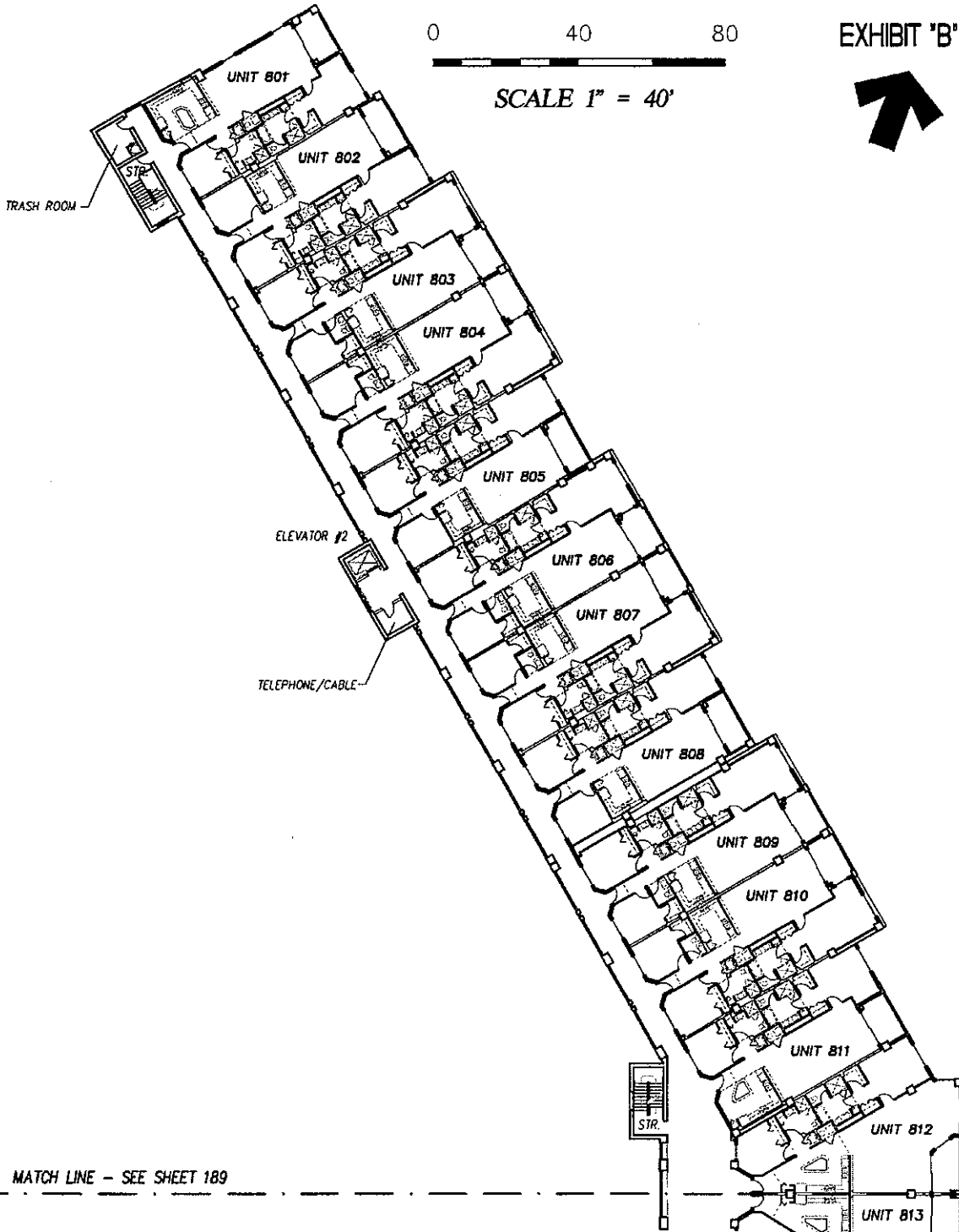
SHEET 187 OF 213 SHEETS

\\survey\2001\land projects\2003\T3070PCBWI\dwg\CONDO--sh 162 -- 187 7th Fl.dwg 09/11/2003 09:21:10 AM EDT

EXHIBIT 'B'

0 40 80

SCALE 1" = 40'



\\survey\12001\land\_projects\t2003\T3070PCBWI\dwg\CONDO-sh 188 - 213 8th Fl.dwg 09/11/2003 09:13:51 AM EDT

**SURF CLUB II**  
**CONDOMINIUM**  
 SITUATED IN MATANZAS SHORES  
 FLAGLER COUNTY, FLORIDA  
**EIGHTH FLOOR - OVERALL LAYOUT (North Wing)**



**TOMOKA ENGINEERING**  
 CIVIL ENGINEERING & LAND SURVEYING SINCE 1976  
 DAYTONA BEACH FLAGLER/PALM COAST  
 Main Office: 900 So. Ridgewood Ave., Daytona Beach, FL 32114  
 Phone: 386-257-1600 Fax: 386-257-1601  
 e-mail: tomoka@tomoka-eng.com website: www.tomoka@tomoka-eng.com

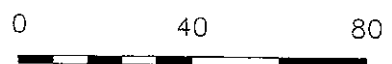
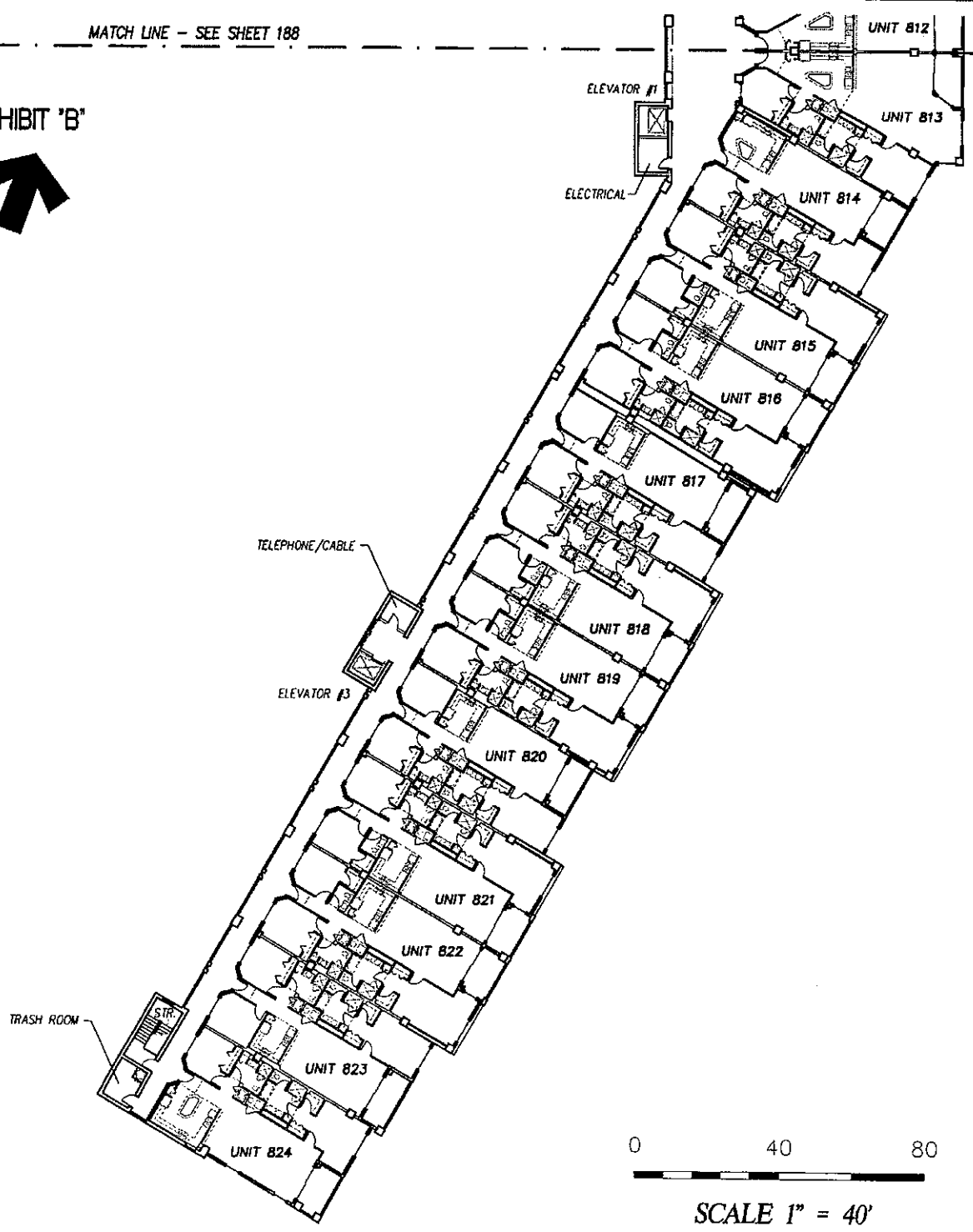
DATE ISSUED: 07/23/2003

JOB # T3070PCBWI

SHEET 188 OF 213 SHEETS

MATCH LINE - SEE SHEET 188

EXHIBIT 'B'  
↑



SCALE 1" = 40'

**SURF CLUB II  
CONDOMINIUM**

SITUATED IN MATANZAS SHORES  
FLAGLER COUNTY, FLORIDA

**EIGHTH FLOOR - OVERALL LAYOUT (South Wing)**



**TOMOKA ENGINEERING**  
 CIVIL ENGINEERING & LAND SURVEYING SINCE 1976  
 DAYTONA BEACH FLAGLER/PALM COAST  
 Main Office 900 So. Ridgewood Ave., Daytona Beach, FL 32114  
 Phone: 386-257-1600 Fax: 386-257-1601  
 email: tomoka@tomoka-eng.com website: www.tomoka@tomoka-eng.com

DATE ISSUED: 07/23/2003

JOB # T3070PCBW!

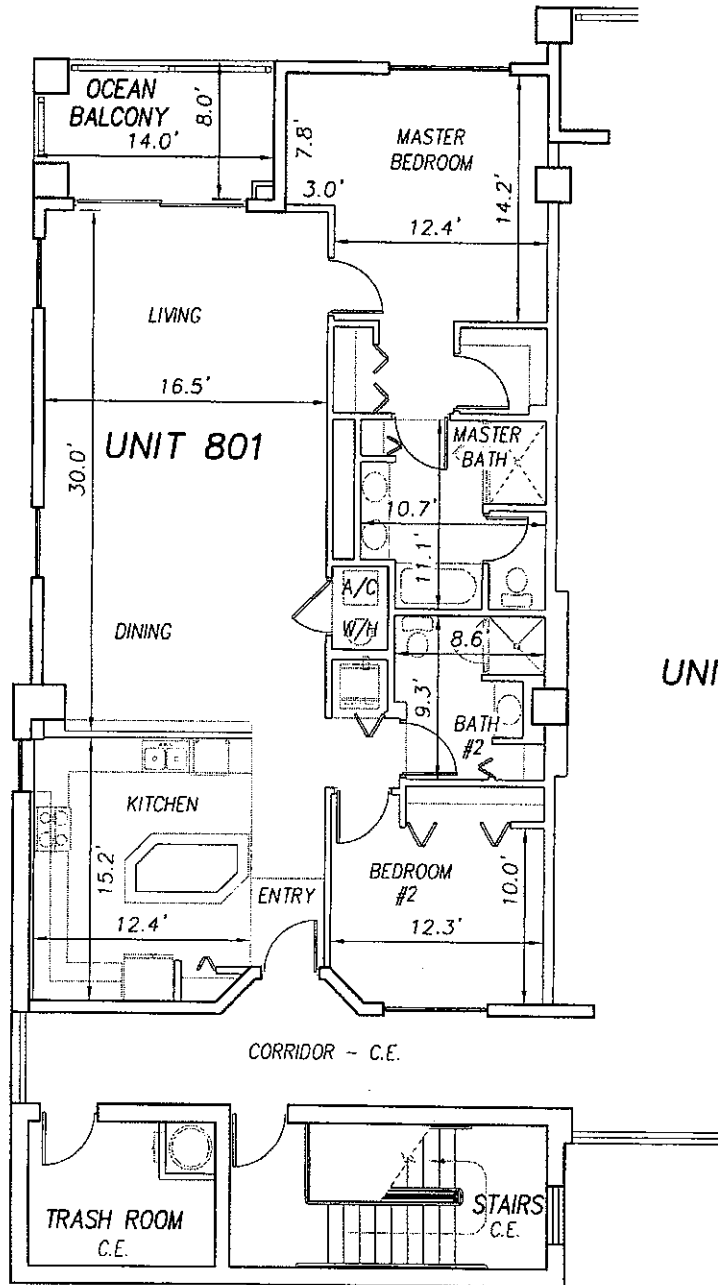
SHEET 189 OF 213 SHEETS

\\survey\2001\cond\_projects\2003\T3070PCBW\dwg\CONDO-sn 188 - 213 8th Fl.dwg 09/11/2003 09:13:51 AM EDT

0 10 20  
 SCALE 1" = 10'

OFF REC 0983 PAGE 0351

EXHIBIT 'B'



\\survey\12001\cond projects\2003\T3070PCBWI\dwg\CONDO-sh 188 - 213 8th Fl.dwg 09/11/2003 09:13:51 AM EDT

**SURF CLUB II**  
**CONDOMINIUM**  
 SITUATED IN MATANZAS SHORES  
 FLAGLER COUNTY, FLORIDA  
**EIGHTH FLOOR - UNIT 801 (North Wing)**



**TOMOKA ENGINEERING**  
 CIVIL ENGINEERING & LAND SURVEYING SINCE 1976  
 DAYTONA BEACH FLAGLER/PALM COAST  
 Mch Office: 900 So. Ridgewood Ave., Daytona Beach, FL 32114  
 Phone: 386-257-1600 Fax: 386-257-1601  
 mob: tomoka@tomoka-eng.com web site: www.tomoka@tomoka-eng.com

DATE ISSUED: 07/23/2003

JOB # T3070PCBWI

SHEET 190 OF 213 SHEETS

0 10 20

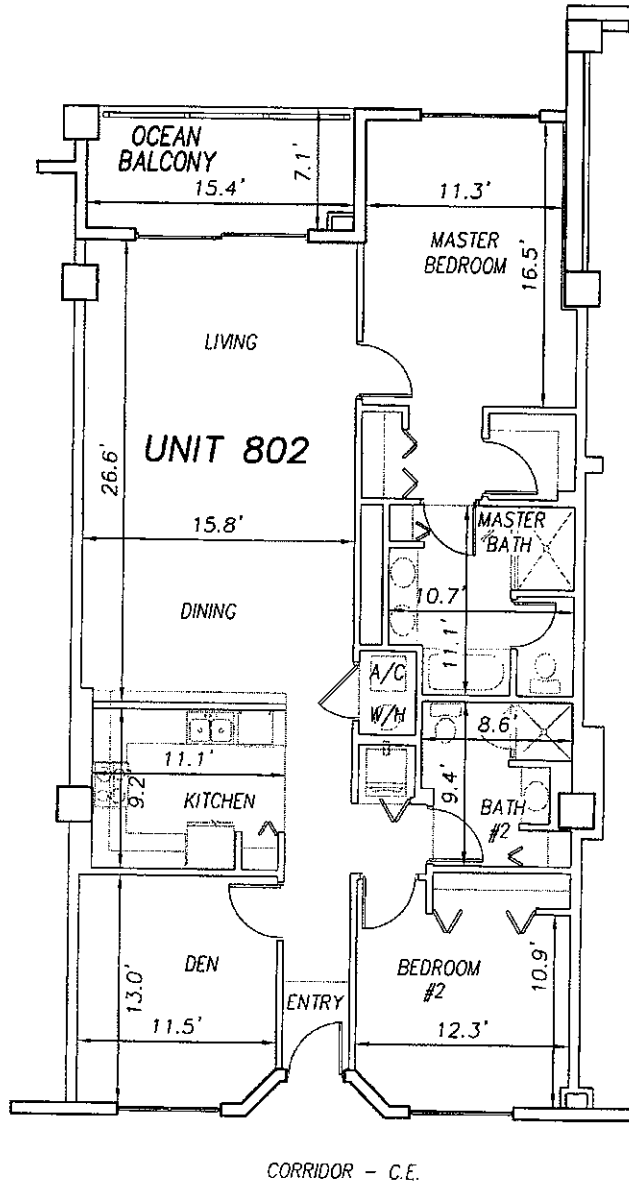
SCALE 1" = 10'

OFF REC 0983 PAGE 0352 EXHIBIT 'B'



UNIT 801

UNIT 803



\\survey\2001\cond projects\2003\T3070PCBW\dwg\COND0-sh 188 - 213 8th Fl.dwg 09/11/2003 09:13:51 AM EDT

**SURF CLUB II**  
**CONDOMINIUM**  
 SITUATED IN MATANZAS SHORES  
 FLAGLER COUNTY, FLORIDA  
**EIGHTH FLOOR - UNIT 802 (North Wing)**



**TOMOKA ENGINEERING**  
 CIVIL ENGINEERING & LAND SURVEYING SINCE 1976  
 DAYTONA BEACH FLAGLER/PALM COAST  
 Main Office: 900 So. Ridgewood Ave., Daytona Beach, FL 32114  
 Phone: 386-257-1600 Fax: 386-257-1601  
 email: tomoka@tomoka-eng.com website: www.tomoka@tomoka-eng.com

DATE ISSUED: 07/23/2003

JOB # T3070PCBW1

SHEET 191 OF 213 SHEETS

0 10 20

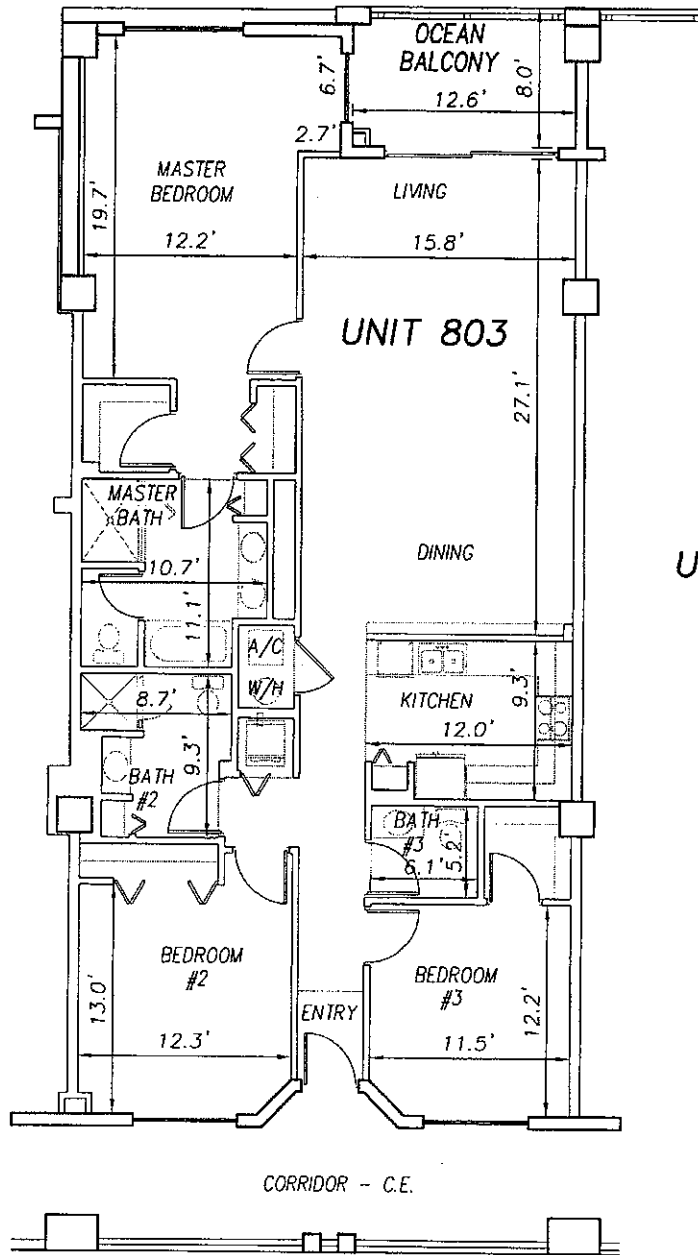
SCALE 1" = 10'

OFF REC 0983 PAGE 0353

EXHIBIT 'B'



UNIT 802



UNIT 804

**SURF CLUB II  
CONDOMINIUM**

SITUATED IN MATANZAS SHORES  
FLAGLER COUNTY, FLORIDA

**EIGHTH FLOOR - UNIT 803 (North Wing)**



**TOMOKA ENGINEERING**

CIVIL ENGINEERING & LAND SURVEYING SINCE 1976  
DAYTONA BEACH FLAGLER/PALM COAST  
Main Office: 900 So. Ridgewood Ave., Daytona Beach, FL 32114  
Phone: 386-257-1600 Fax: 386-257-1601  
email: tomoka@tomoka-eng.com website: www.tomoka@tomoka-eng.com

DATE ISSUED: 07/23/2003

JOB # T3070PCBWI

SHEET 192 OF 213 SHEETS

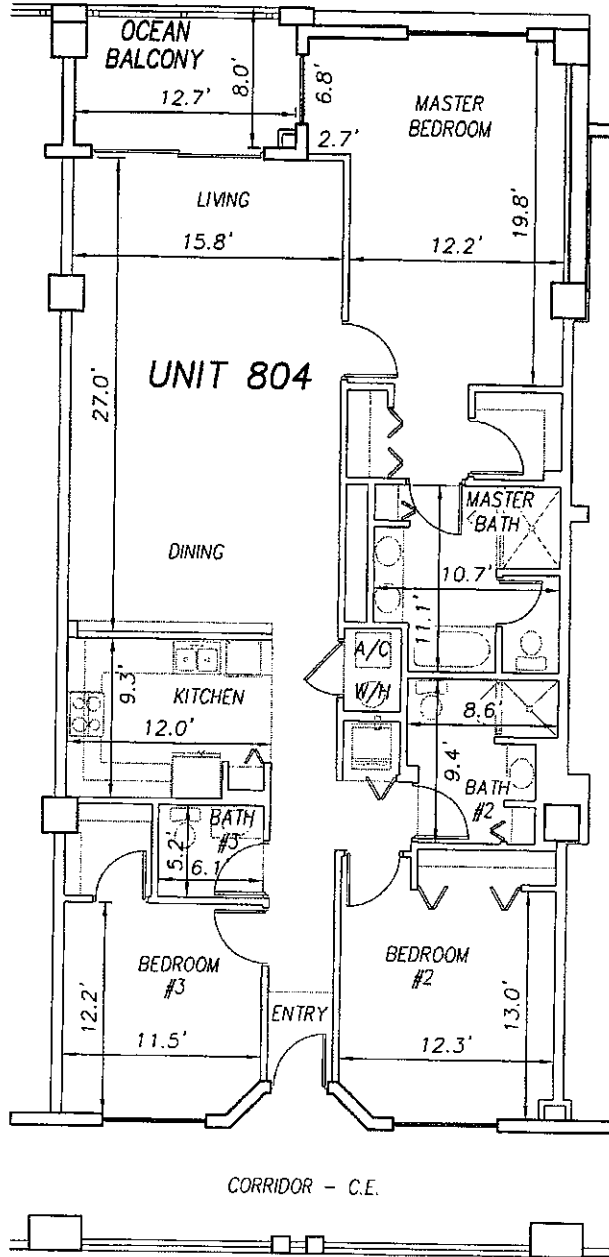
\\survey\2001\land projects\2003\T3070PCBWI\dwg\CONDO-sh 188 - 213 8th Fl.dwg 09/11/2003 09:13:51 AM EDT

0 10 20

SCALE 1" = 10'

OFF REC 0983 PAGE 0354

EXHIBIT 'B'



UNIT 803

UNIT 804

UNIT 805

**SURF CLUB II  
CONDOMINIUM**

SITUATED IN MATANZAS SHORES  
FLAGLER COUNTY, FLORIDA

**EIGHTH FLOOR - UNIT 804 (North Wing)**



**TOMOKA ENGINEERING**

CIVIL ENGINEERING & LAND SURVEYING SINCE 1976  
DAYTONA BEACH FLAGLER/PALM COAST  
Main Office: 900 So. Ridgewood Ave., Daytona Beach, FL 32114  
Phone: 386-257-1600 Fax: 386-257-1601  
email: tomoka@tomoka-eng.com website: www.tomokaoflorida-eng.com

CB #2232

DATE ISSUED: 07/23/2003

JOB # T3070PCBWI

SHEET 193 OF 213 SHEETS

\\survey\2001\cond projects\2003\T3070PCBWI\dwg\CONDO--sh 188 - 213 8th Fl.dwg 09/11/2003 09:13:51 AM EDT

0 10 20

SCALE 1" = 10'

OFF REC 0983 PAGE 0355

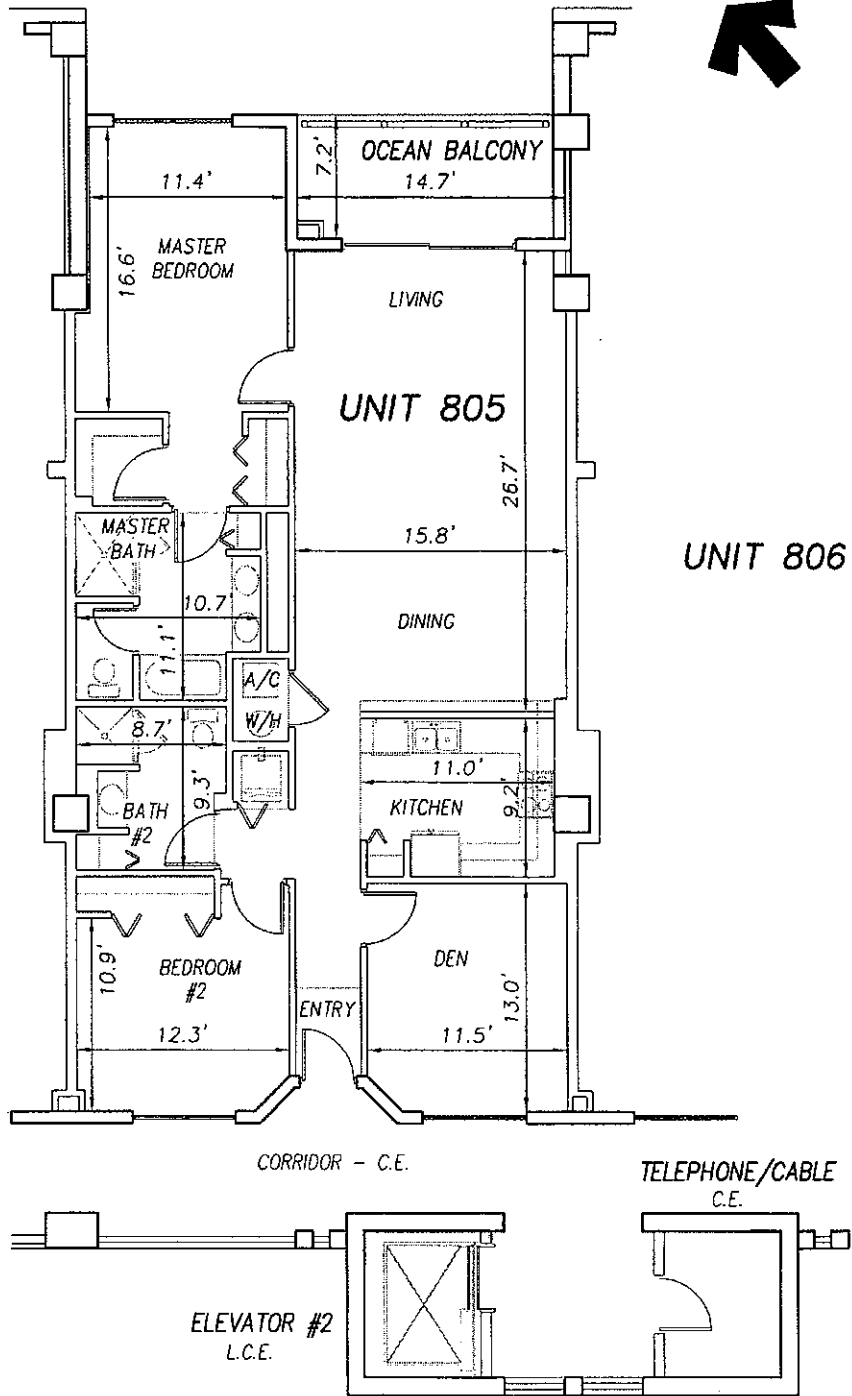
EXHIBIT 'B'



UNIT 804

UNIT 805

UNIT 806



\\survey\2001\land projects\12003\T3070PCBW1\dwg\CONDO-sh 188 - 213 8th Fl.dwg 09/11/2003 09:13:51 AM EDT

**SURF CLUB II  
CONDOMINIUM**

SITUATED IN MATANZAS SHORES  
FLAGLER COUNTY, FLORIDA

**EIGHTH FLOOR - UNIT 805 (North Wing)**



**TOMOKA ENGINEERING**

CIVIL ENGINEERING & LAND SURVEYING SINCE 1976  
DAYTONA BEACH FLAGLER/PALM COAST

Main Office: 900 So. Ridgewood Ave. Daytona Beach, FL 32114  
Phone: 386-257-1600 Fax: 386-257-1601  
e-mail: tomoka@tomoka-eng.com web site: www.tomoka-tomoka-eng.com

LB J2232

DATE ISSUED: 07/23/2003

JOB # T3070PCBW1

SHEET 194 OF 213 SHEETS



EXHIBIT 'B'

0 10 20

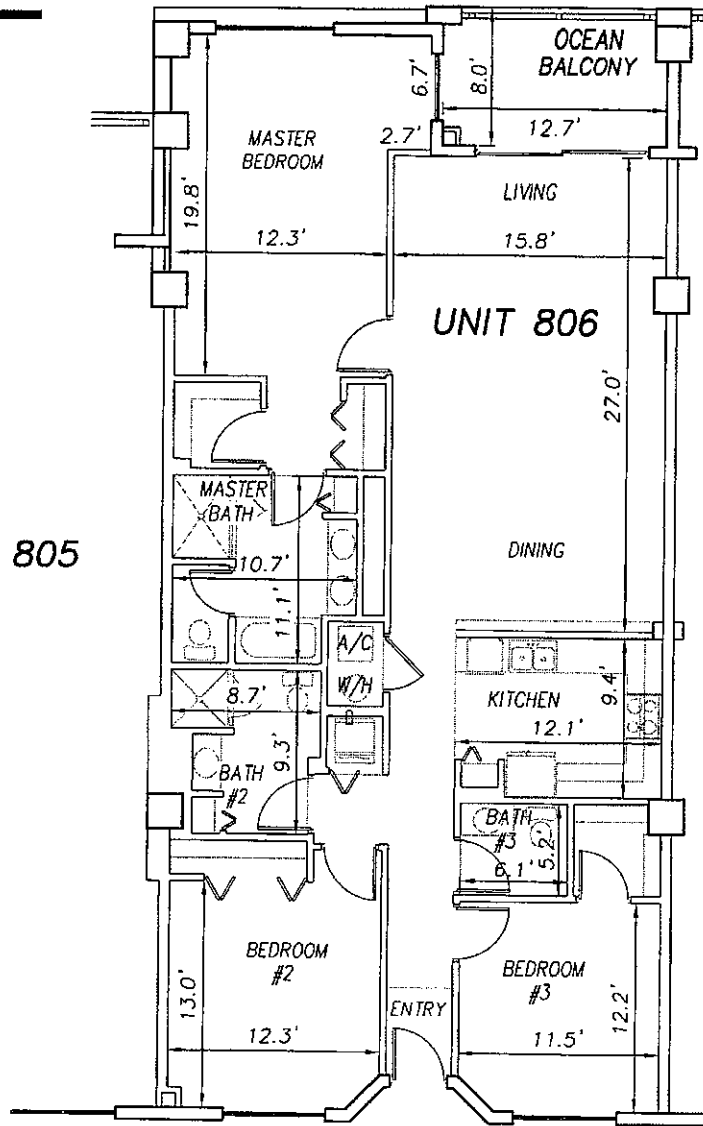
SCALE 1" = 10'



UNIT 805

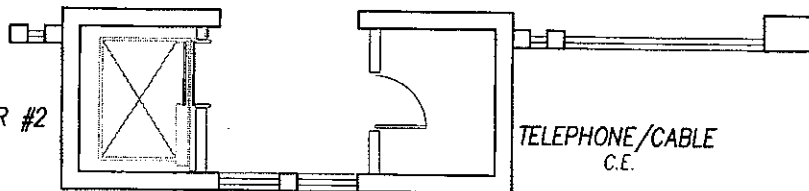
UNIT 806

UNIT 807



CORRIDOR - C.E.

ELEVATOR #2  
L.C.E.



TELEPHONE/CABLE  
C.E.

**SURF CLUB II**  
**CONDOMINIUM**  
SITUATED IN MATANZAS SHORES  
FLAGLER COUNTY, FLORIDA

**EIGHTH FLOOR - UNIT 806 (North Wing)**



**TOMOKA ENGINEERING**  
CIVIL ENGINEERING & LAND SURVEYING SINCE 1976  
DAYTONA BEACH FLAGLER/PALM COAST  
Main Office: 900 So. Ridgewood Ave., Daytona Beach, FL 32114  
Phone: 386-257-1600 Fax: 386-257-1601  
email: tomoka@tomoka-eng.com website: www.tomoka@tomoka-eng.com

DATE ISSUED: 07/23/2003

JOB # T3070PCBWI

SHEET 195 OF 213 SHEETS

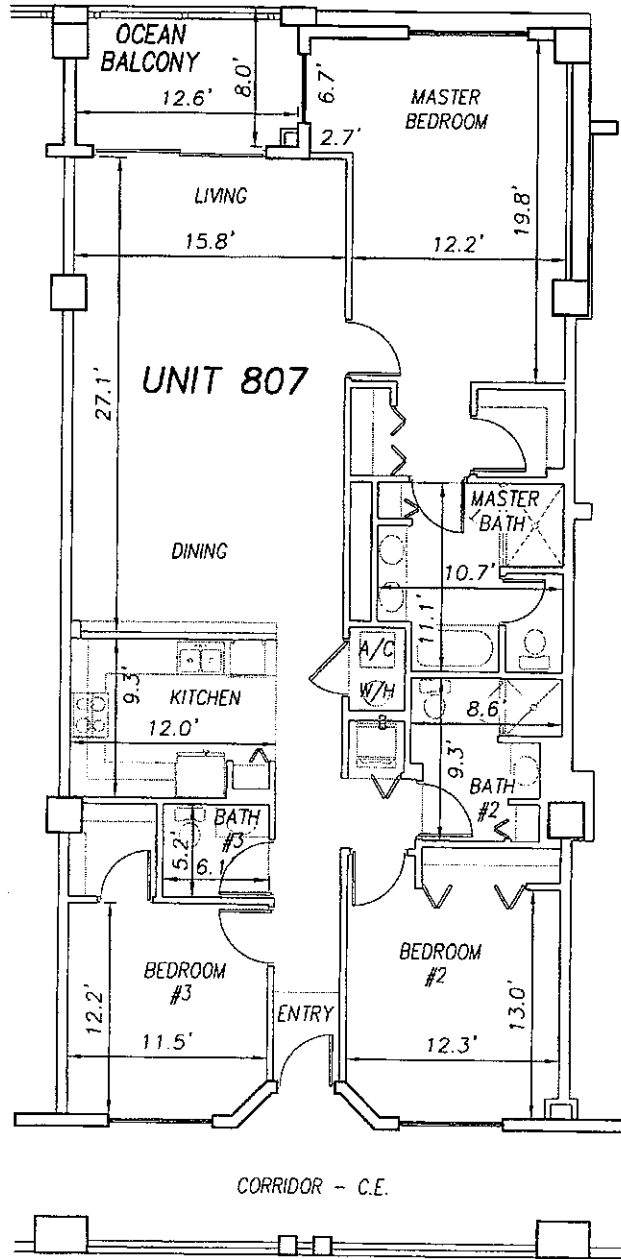
\\survey\2001\land projects\2003\T3070PCBWI\dwg\CONDO-sn 188 - 213 8th Fl.dwg 09/11/2003 09:13:51 AM EDT

0 10 20



SCALE 1" = 10'

OFF REC 0983 PAGE 0357 EXHIBIT 'B'



UNIT 806

UNIT 807

UNIT 808

**SURF CLUB II  
CONDOMINIUM**

SITUATED IN MATANZAS SHORES  
FLAGLER COUNTY, FLORIDA

**EIGHTH FLOOR - UNIT 807 (North Wing)**



**TOMOKA ENGINEERING**

CIVIL ENGINEERING & LAND SURVEYING SINCE 1976  
DAYTONA BEACH FLAGLER/PALM COAST  
Main Office 900 So. Ridgewood Ave., Daytona Beach, FL 32114  
Phone 386-257-1600 Fax 386-257-1601  
smok\_tomoka@tomoka-eng.com website: www.tomoka-tomoka-eng.com

DATE ISSUED: 07/23/2003

JOB # T3070PCBWI

SHEET 196 OF 213 SHEETS

\\survey\2001\cond projects\2003\T3070PCBWI\dwg\CONDO--sh 188 - 213 8th Fl.dwg 09/11/2003 09:13:51 AM EDT

0 10 20

SCALE 1" = 10'

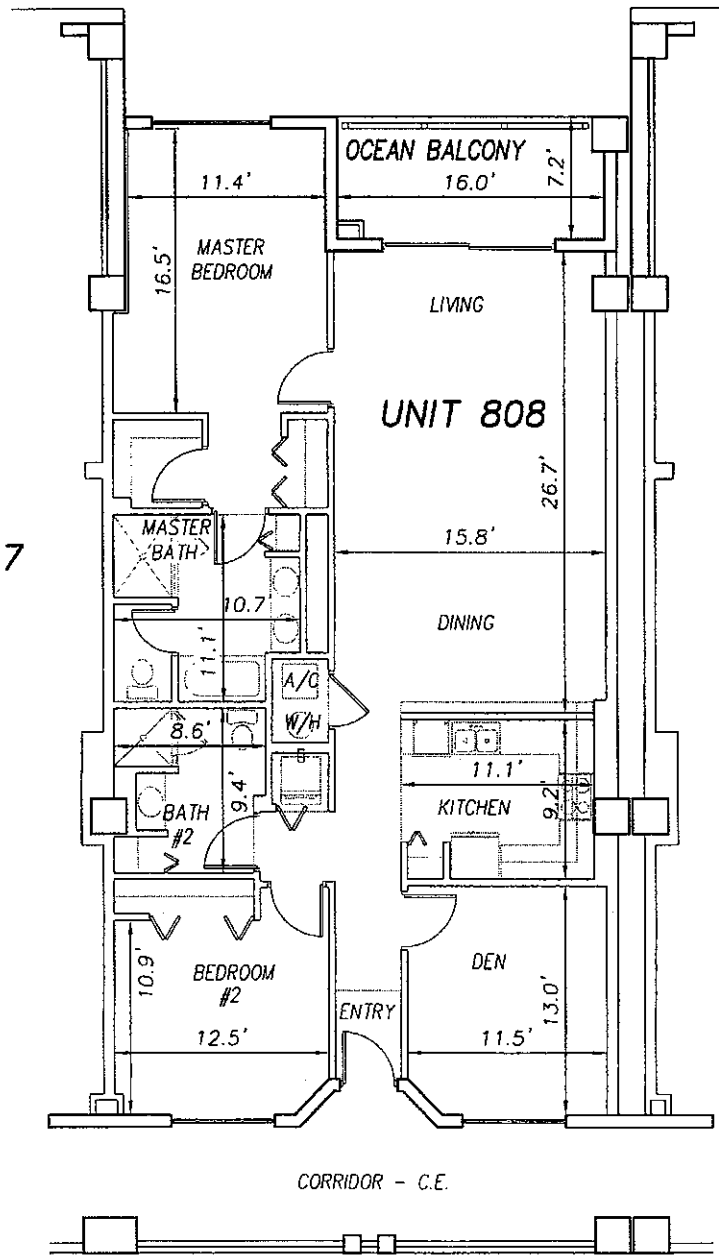
OFF REC 0983 PAGE 0358

EXHIBIT 'B'



UNIT 807

UNIT 809



**SURF CLUB II  
CONDOMINIUM**

SITUATED IN MATANZAS SHORES  
FLAGLER COUNTY, FLORIDA

**EIGHTH FLOOR - UNIT 808 (North Wing)**



LG #2237

**TOMOKA ENGINEERING**

CIVIL ENGINEERING & LAND SURVEYING SINCE 1976  
DAYTONA BEACH FLAGLER/PALM COAST  
Main Office: 900 So. Ridgewood Ave., Daytona Beach, FL 32114  
Phone: 386-257-1600 Fax: 386-257-1601  
email: tomoka@tomoka-eng.com website: www.tomoka@tomoka-eng.com

DATE ISSUED: 07/23/2003

JOB # T3070PCBWI

SHEET 197 OF 213 SHEETS

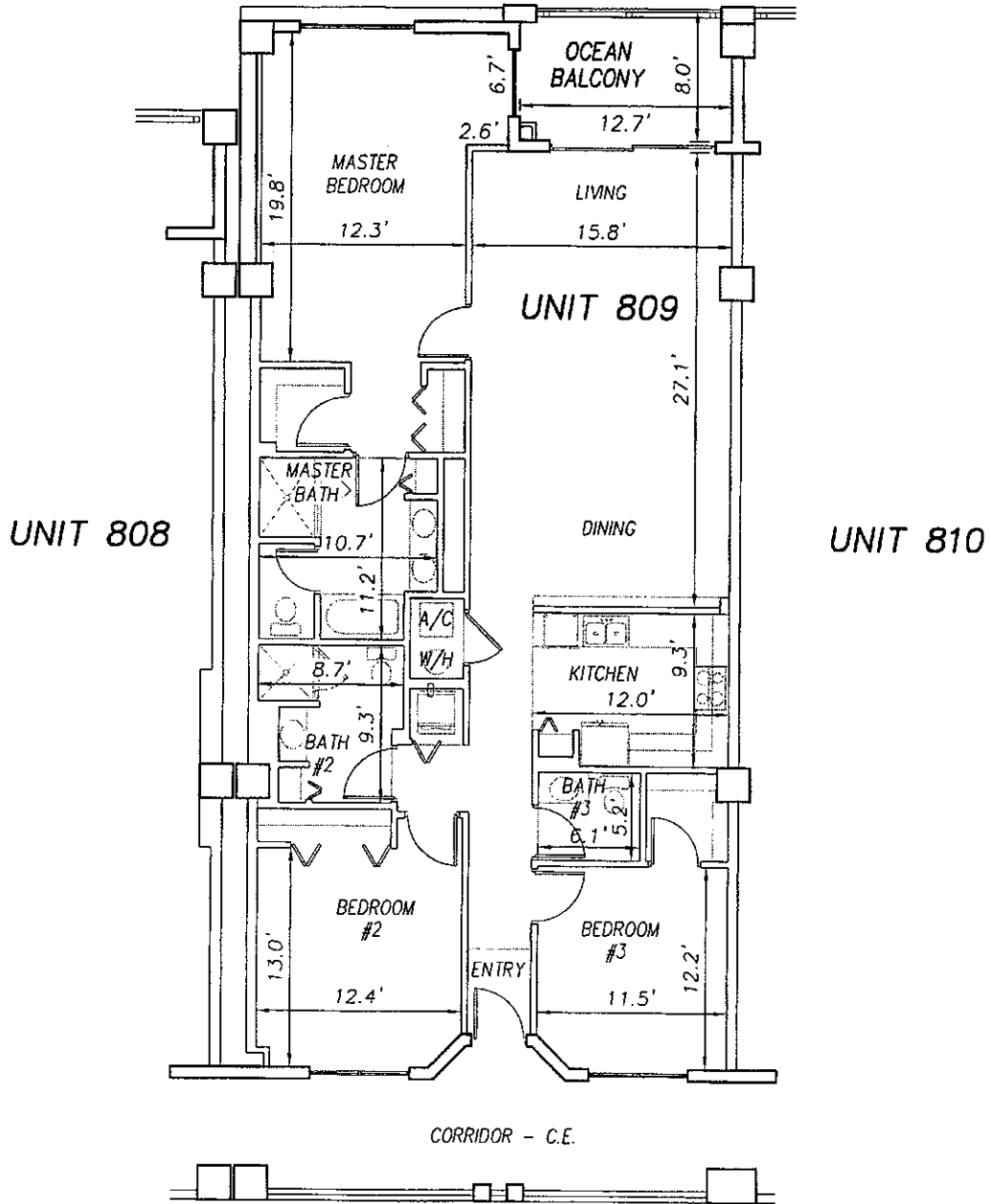
\\survey\2001\cond\_projects\2003\T3070PCBWI\dwg\CONDO-sh 188 - 213 8th Fl.dwg 09/11/2003 09:13:51 AM EDT

0 10 20

SCALE 1" = 10'

OFF REC 0983 PAGE 0359

EXHIBIT 'B'



\\survey\2001\cond projects t2003\T3070PCBWI\dwg\CONDO--eh 188 - 213 8th Fl.dwg 08/11/2003 09:13:51 AM EDT

**SURF CLUB II  
CONDOMINIUM**

SITUATED IN MATANZAS SHORES  
FLAGLER COUNTY, FLORIDA

**EIGHTH FLOOR - UNIT 809 (North Wing)**



**TOMOKA ENGINEERING**

CIVIL ENGINEERING & LAND SURVEYING SINCE 1976  
DAYTONA BEACH FLAGLER/PALM COAST  
Main Office: 900 So. Ridgewood Ave., Daytona Beach, FL 32114  
Phone: 386-257-1600 Fax: 386-257-1601  
email: tomoka@tomoka-eng.com website: www.tomoka-engineering.com

DATE ISSUED: 07/23/2003

JOB # T3070PCBWI

SHEET 198 OF 213 SHEETS

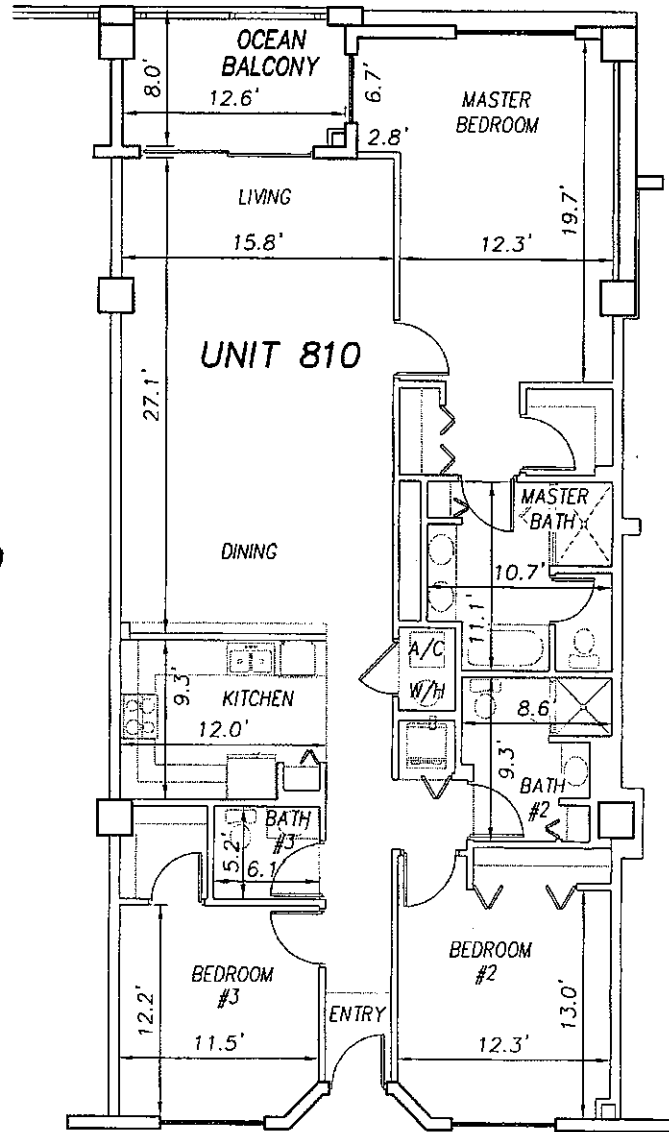
0 10 20



SCALE 1" = 10'

OFF REC 0983 PAGE 0360

EXHIBIT 'B'



UNIT 809

UNIT 810

UNIT 811

CORRIDOR - C.E.

**SURF CLUB II  
CONDOMINIUM**

SITUATED IN MATANZAS SHORES  
FLAGLER COUNTY, FLORIDA

**EIGHTH FLOOR - UNIT 810 (North Wing)**



**TOMOKA ENGINEERING**

CIVIL ENGINEERING & LAND SURVEYING SINCE 1976

DAYTONA BEACH FLAGLER/PALM COAST

Main Office: 900 So. Ridgewood Ave., Daytona Beach, FL 32114

Phone: 386-257-1600 Fax: 386-257-1601

email: tomoka@tomoka-eng.com website: www.tomoka@tomoka-eng.com

LB #2232

DATE ISSUED: 07/23/2003

JOB # T3070PCBWI

SHEET 199 OF 213 SHEETS

\\survey\2001\end\_projects\2003\T3070PCBWI\dwg\CONDO-sh 188 - 213 8th Fl.dwg 05/11/2003 09:13:51 AM EDT

0 10 20

SCALE 1" = 10'

OFF REC 0983 PAGE 0361

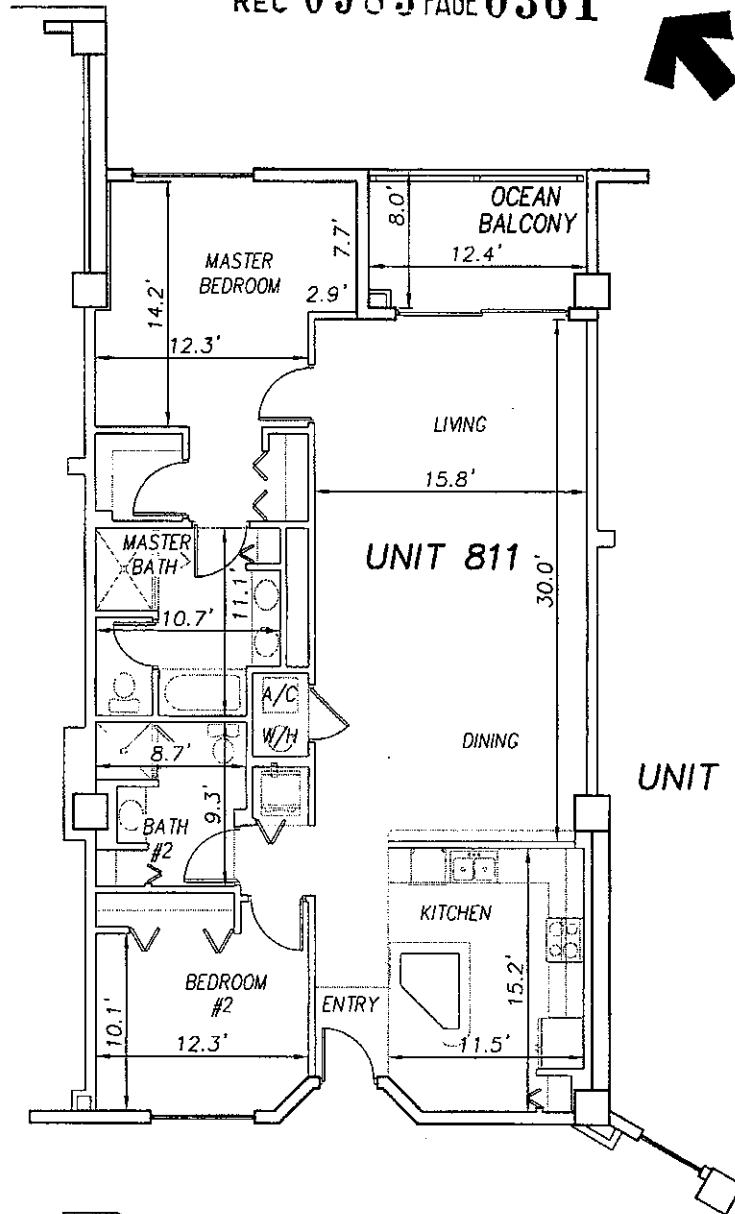
EXHIBIT 'B'



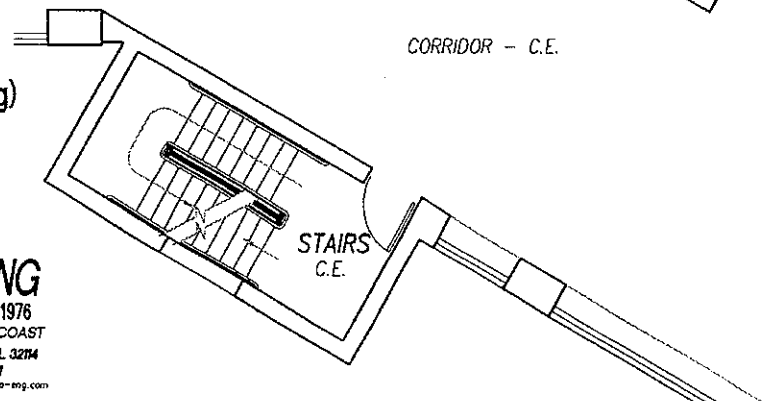
UNIT 810

UNIT 811

UNIT 812



CORRIDOR - C.E.



**SURF CLUB II  
CONDOMINIUM**

SITUATED IN MATANZAS SHORES  
FLAGLER COUNTY, FLORIDA

**EIGHTH FLOOR - UNIT 811 (North Wing)**



**TOMOKA ENGINEERING**  
CIVIL ENGINEERING & LAND SURVEYING SINCE 1976  
DAYTONA BEACH FLAGLER/PALM COAST  
Main Office: 900 So. Ridgewood Ave., Daytona Beach, FL 32114  
Phone: 386-257-1600 Fax: 386-257-1601  
email: tomoka@tomoka-eng.com website: www.tomoka@tomoka-eng.com

DATE ISSUED: 07/23/2003

JOB # T3070PCBWI

SHEET 200 OF 213 SHEETS

\\survey\2001\cond projects\2003\T3070PCBWI\dwg\CONDO-sh 188 - 213 8th Fl.dwg 09/11/2003 09:13:51 AM EDT

0 10 20

SCALE 1" = 10'

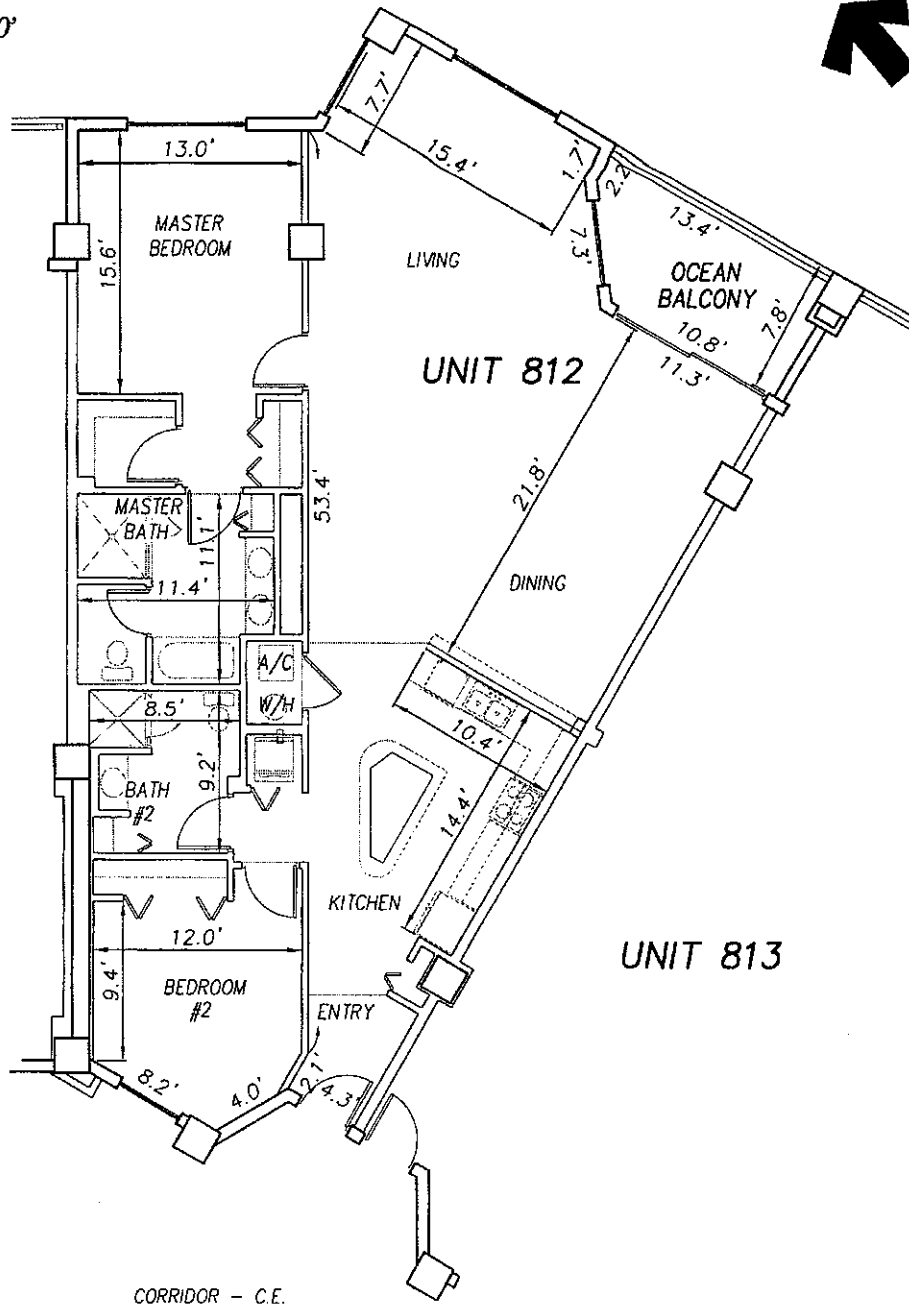
OFF REC 0983 PAGE 0362 EXHIBIT 'B'



UNIT 811

UNIT 812

UNIT 813



CORRIDOR - C.E.

**SURF CLUB II  
CONDOMINIUM**

SITUATED IN MATANZAS SHORES  
FLAGLER COUNTY, FLORIDA

**EIGHTH FLOOR - UNIT 812 (North Wing)**



**TOMOKA ENGINEERING**

CIVIL ENGINEERING & LAND SURVEYING SINCE 1976  
DAYTONA BEACH FLAGLER/PALM COAST  
Main Office: 900 So. Ridgewood Ave., Daytona Beach, FL 32114  
Phone: 386-257-1600 Fax: 386-257-1601  
email: tomoka@tomoka-eng.com website: www.tomoka@tomoka-eng.com

18 J2232

DATE ISSUED: 07/23/2003

JOB # T3070PCBWI

SHEET 201 OF 213 SHEETS

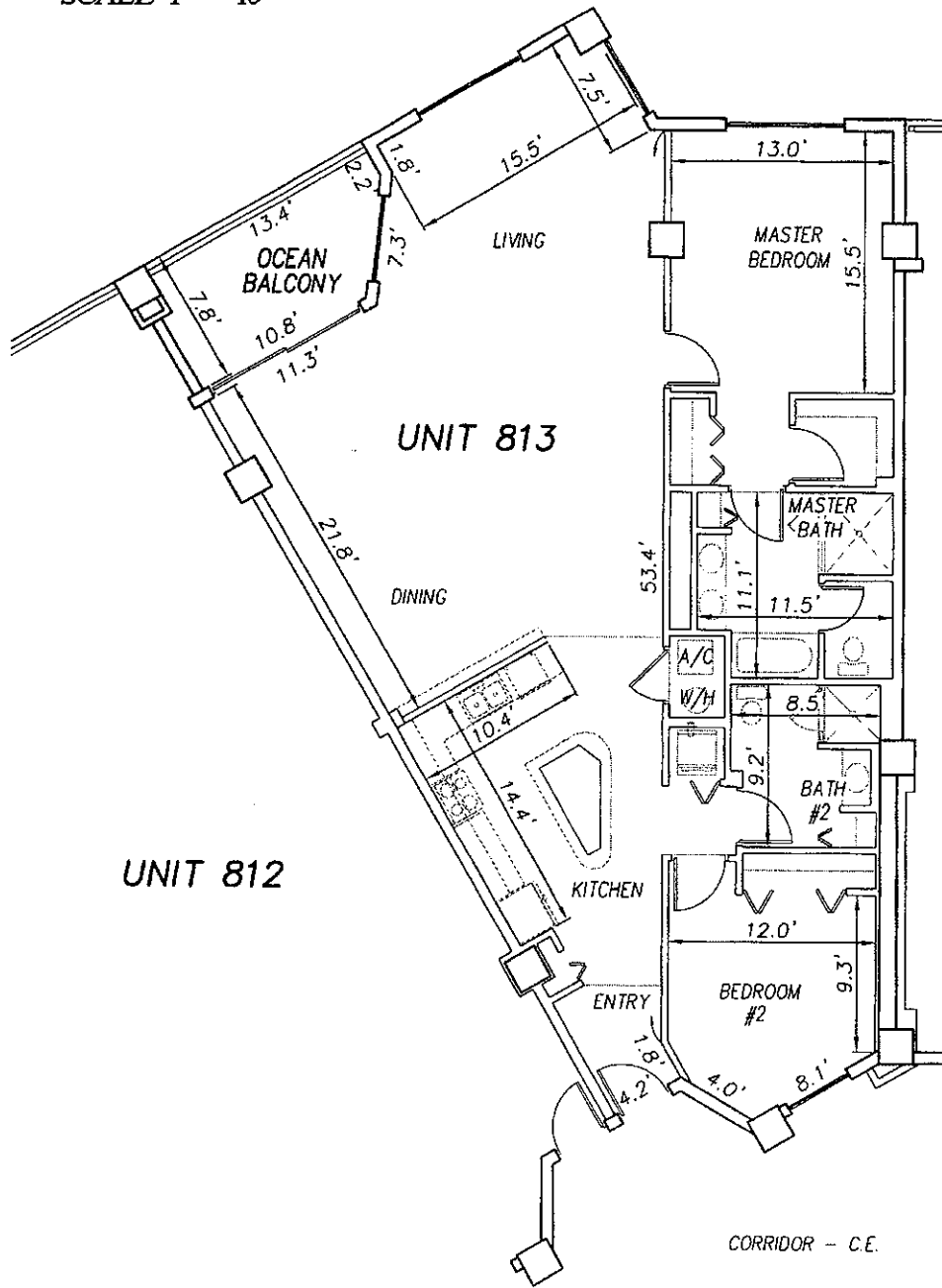
\\survey\2001\land projects\2003\13070PCBWI\dwg\CONDO-sh 188 - 213 8th Fl.dwg 09/11/2003 09:13:51 AM EDT

0 10 20

SCALE 1" = 10'

OFF REC 0983 PAGE 0363

EXHIBIT 'B'



\\survey\12001\land projects\2003\T3070PCBWI\dwg\CONDO--sh 18B - 213 8th Fl.dwg 09/11/2003 09:13:51 AM EDT

UNIT 812

UNIT 813

UNIT 814

**SURF CLUB II  
CONDOMINIUM**  
SITUATED IN MATANZAS SHORES  
FLAGLER COUNTY, FLORIDA  
**EIGHTH FLOOR - UNIT 813 (South Wing)**



**TOMOKA ENGINEERING**  
CIVIL ENGINEERING & LAND SURVEYING SINCE 1976  
DAYTONA BEACH FLAGLER/PALM COAST  
Main Office: 900 So. Ridgewood Ave., Daytona Beach, FL 32114  
Phone: 386-257-1600 Fax: 386-257-1601  
email: tomoka@tomoka-eng.com website: www.tomoka-tomoka-eng.com

DATE ISSUED: 07/23/2003

JOB # T3070PCBWI

SHEET 202 OF 213 SHEETS

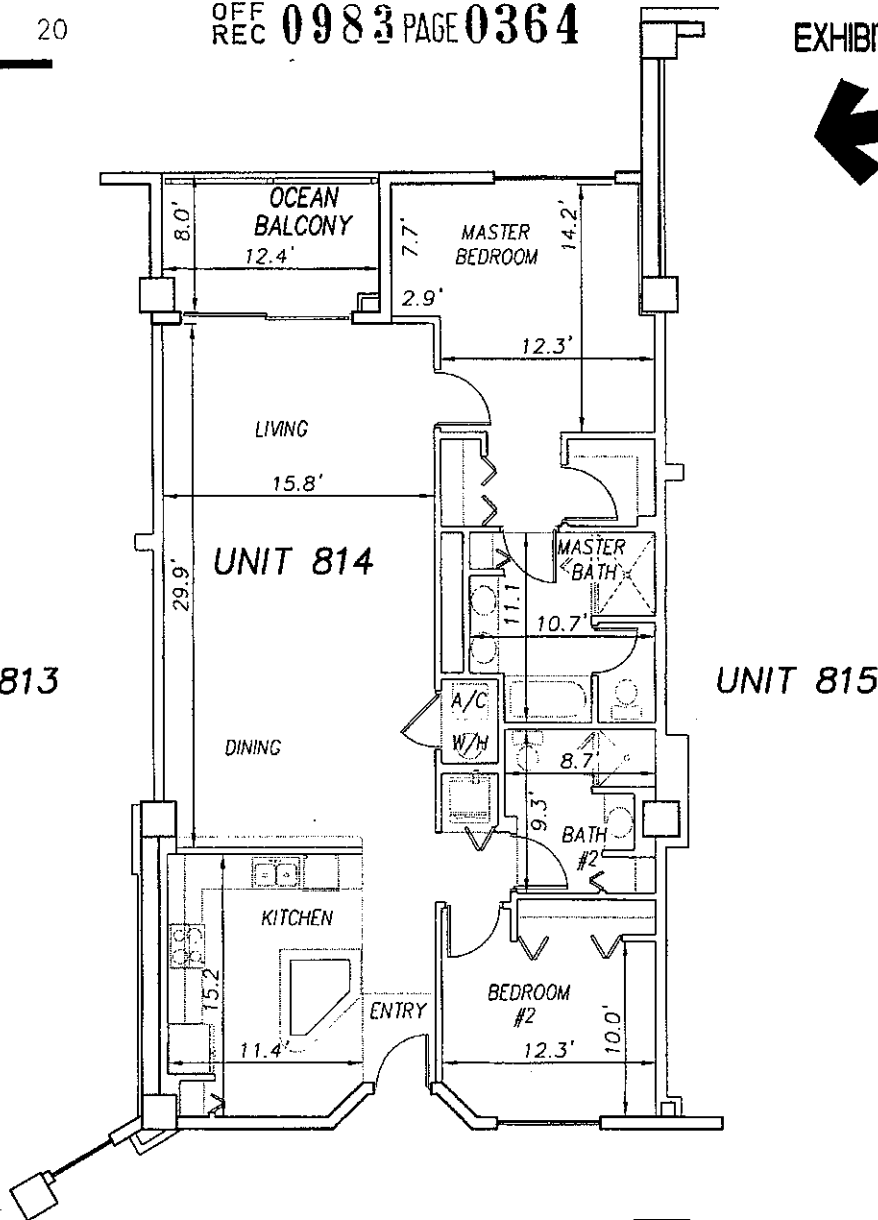


0 10 20

SCALE 1" = 10'

OFF REC 0983 PAGE 0364

EXHIBIT 'B'



UNIT 813

UNIT 814

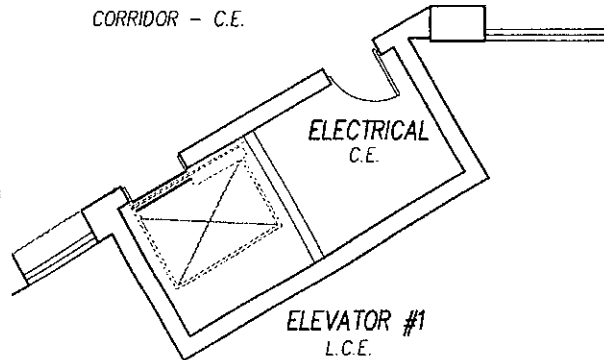
UNIT 815

CORRIDOR - C.E.

**SURF CLUB II  
CONDOMINIUM**

SITUATED IN MATANZAS SHORES  
FLAGLER COUNTY, FLORIDA

**EIGHTH FLOOR - UNIT 814 (South Wing)**



**TOMOKA ENGINEERING**

CIVIL ENGINEERING & LAND SURVEYING SINCE 1976  
DAYTONA BEACH FLAGLER/PALM COAST  
Main Office: 900 So. Ridgewood Ave., Daytona Beach, FL 32114  
Phone: 386-257-1600 Fax: 386-257-1601  
email: tomoka@tomoka-eng.com website: www.tomoka@tomoka-eng.com

DATE ISSUED: 07/23/2003

JOB # T3070PCBW1

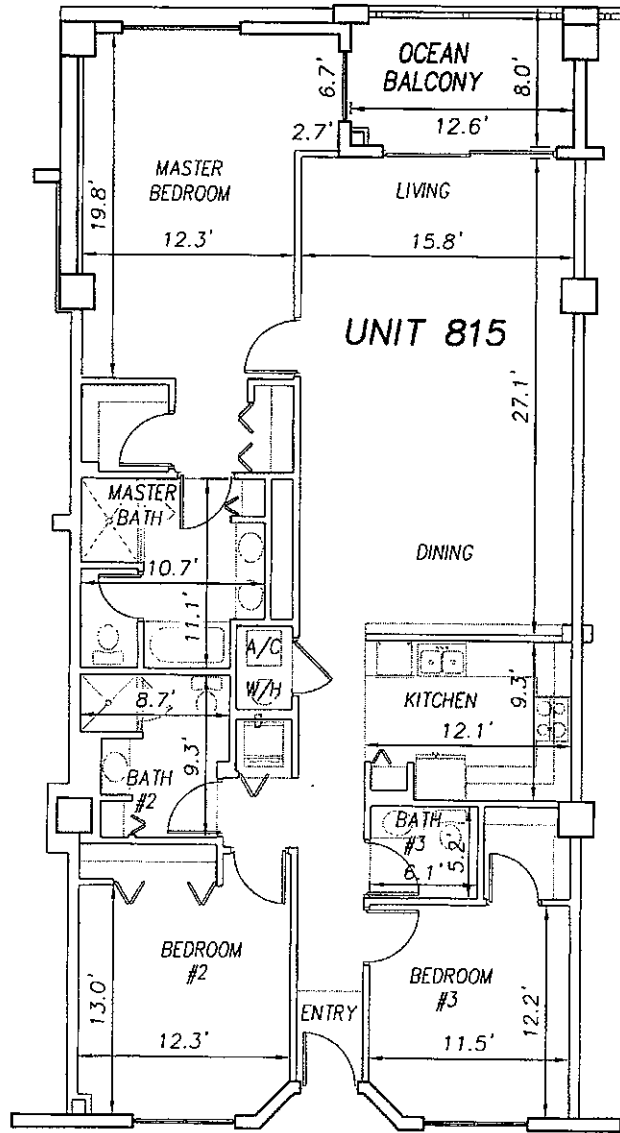
SHEET 203 OF 213 SHEETS

\\survey\2001\land projects\2003\T3070PCBW1.dwg\CONDO-sh 188 - 213 8th Fl.dwg 09/11/2003 09:13:51 AM EDT

0 10 20

SCALE 1" = 10'

OFF REC 0983 PAGE 0365 EXHIBIT 'B'



UNIT 814

UNIT 816

CORRIDOR - C.E.

ELECTRICAL

**SURF CLUB II  
CONDOMINIUM**

SITUATED IN MATANZAS SHORES  
FLAGLER COUNTY, FLORIDA

**EIGHTH FLOOR - UNIT 815 (South Wing)**



**TOMOKA ENGINEERING**

CIVIL ENGINEERING & LAND SURVEYING SINCE 1976  
DAYTONA BEACH FLAGLER/PALM COAST

Main Office: 900 So. Ridgewood Ave., Daytona Beach, FL 32114  
Phone: 386-257-1600 Fax: 386-257-1601  
e-mail: tomoka@tomoka-eng.com website: www.tomoka@tomoka-eng.com

LB #2232

DATE ISSUED: 07/23/2003

JOB # T3070PCBW1

SHEET 204 OF 213 SHEETS

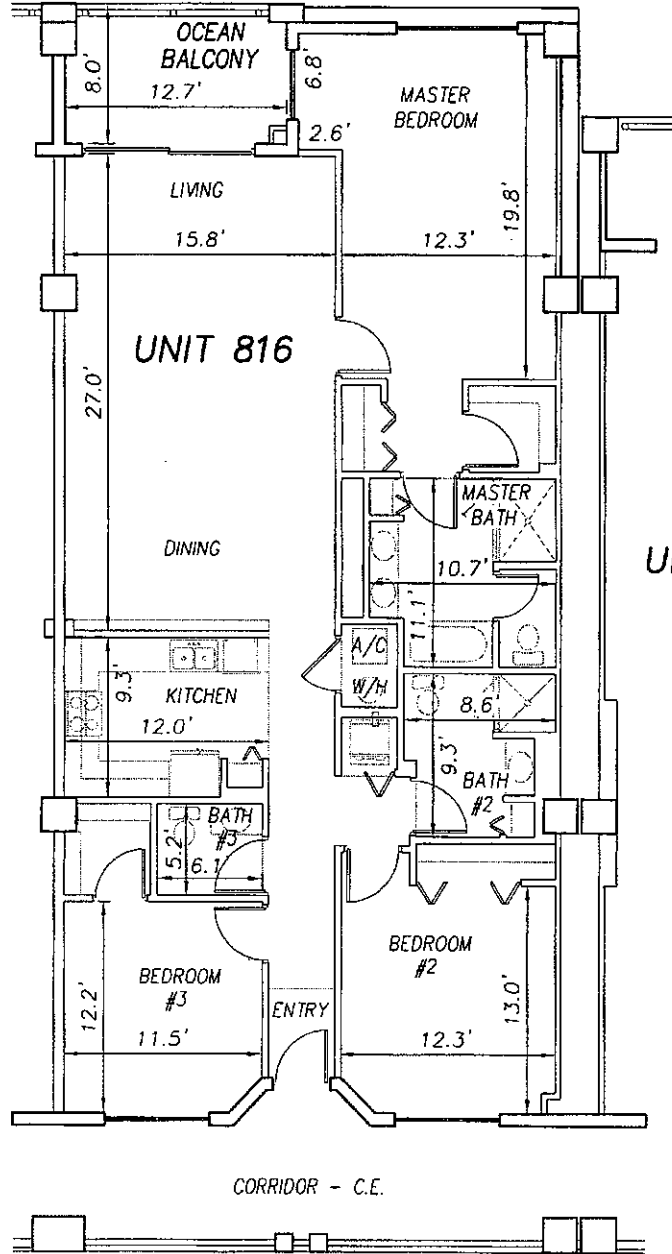
\\survey\2001\land projects\2003\T3070PCBW1\dwg\CONDO-sh 188 - 213 Bth Fl.dwg 09/11/2003 09:13:51 AM EDT

0 10 20

SCALE 1" = 10'

OFF REC 0983 PAGE 0366

EXHIBIT 'B'



UNIT 815

UNIT 817

\\survey\2001\land projects t2003\T3070PCBW\dwg\CONDO-sh 1BB - 213 8th Fl.dwg 09/11/2003 09:13:51 AM EDT

**SURF CLUB II  
CONDOMINIUM**

SITUATED IN MATANZAS SHORES  
FLAGLER COUNTY, FLORIDA

**EIGHTH FLOOR - UNIT 816 (South Wing)**



**TOMOKA ENGINEERING**

CIVIL ENGINEERING & LAND SURVEYING SINCE 1976  
DAYTONA BEACH FLAGLER/PALM COAST

Main Office: 500 So. Ridgewood Ave., Daytona Beach, FL 32114  
Phone: 386-257-1600 Fax: 386-257-1601  
email: tomoka@tomoka-eng.com website: www.tomoka@tomoka-eng.com

LS 7222

DATE ISSUED: 07/23/2003

JOB # T3070PCBW!

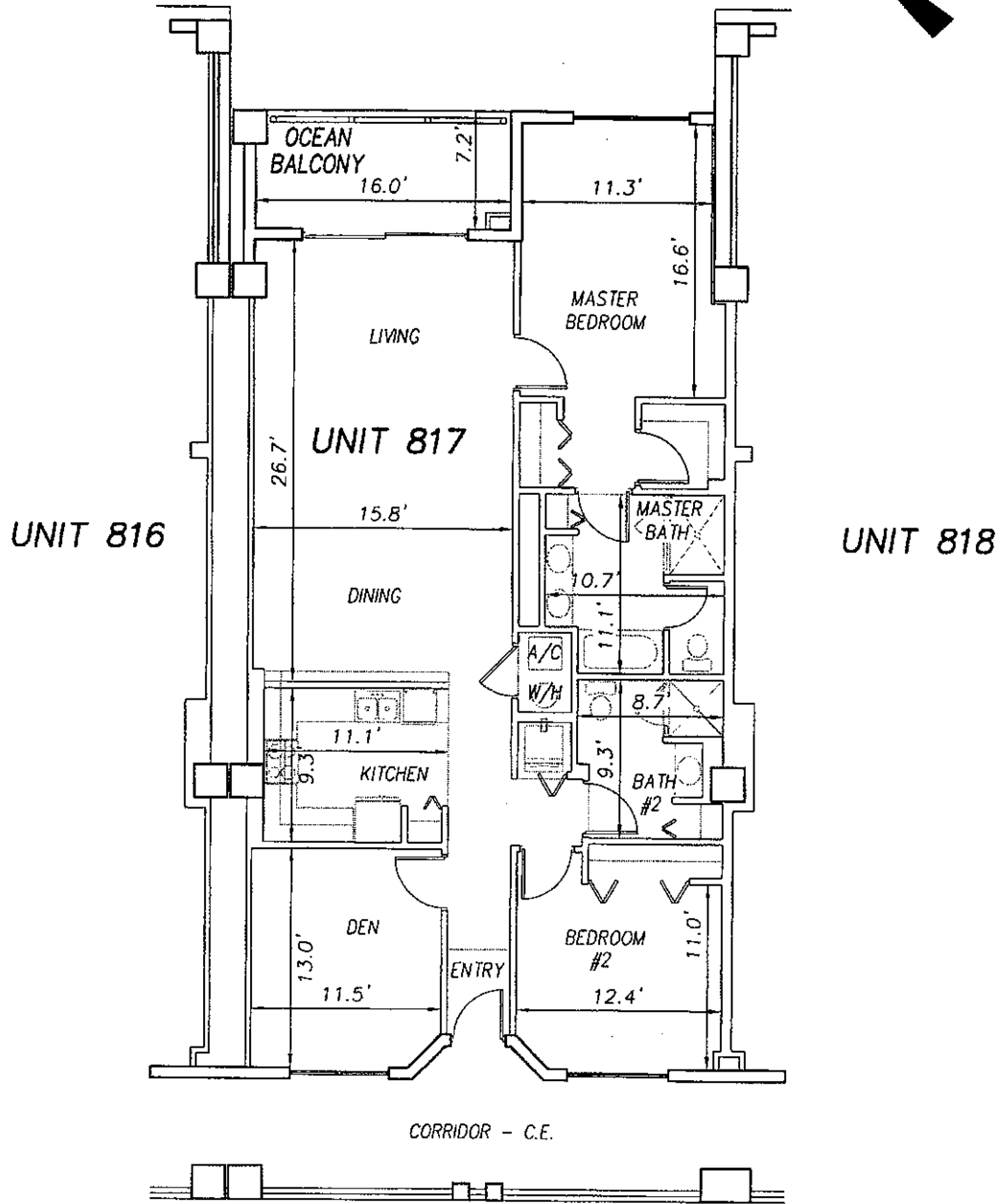
SHEET 205 OF 213 SHEETS

0 10 20

SCALE 1" = 10'

OFF REC 0983 PAGE 0367

EXHIBIT 'B'



\\survey\2001\land projects\2003\T3070PCBWI\dwg\CONDO-sh 188 -- 213 8th Fl.dwg 09/11/2003 09:13:51 AM EDT

**SURF CLUB II  
CONDOMINIUM**  
SITUATED IN MATANZAS SHORES  
FLAGLER COUNTY, FLORIDA  
**EIGHTH FLOOR - UNIT 817 (South Wing)**



**TOMOKA ENGINEERING**  
CIVIL ENGINEERING & LAND SURVEYING SINCE 1976  
DAYTONA BEACH FLAGLER/PALM COAST  
Main Office: 900 So. Ridgewood Ave., Daytona Beach, FL 32114  
Phone: 386-257-1600 Fax: 386-257-1601  
email: tomoka@tomoka-eng.com website: www.tomoka-tomoka-eng.com

DATE ISSUED: 07/23/2003

JOB # T3070PCBWI

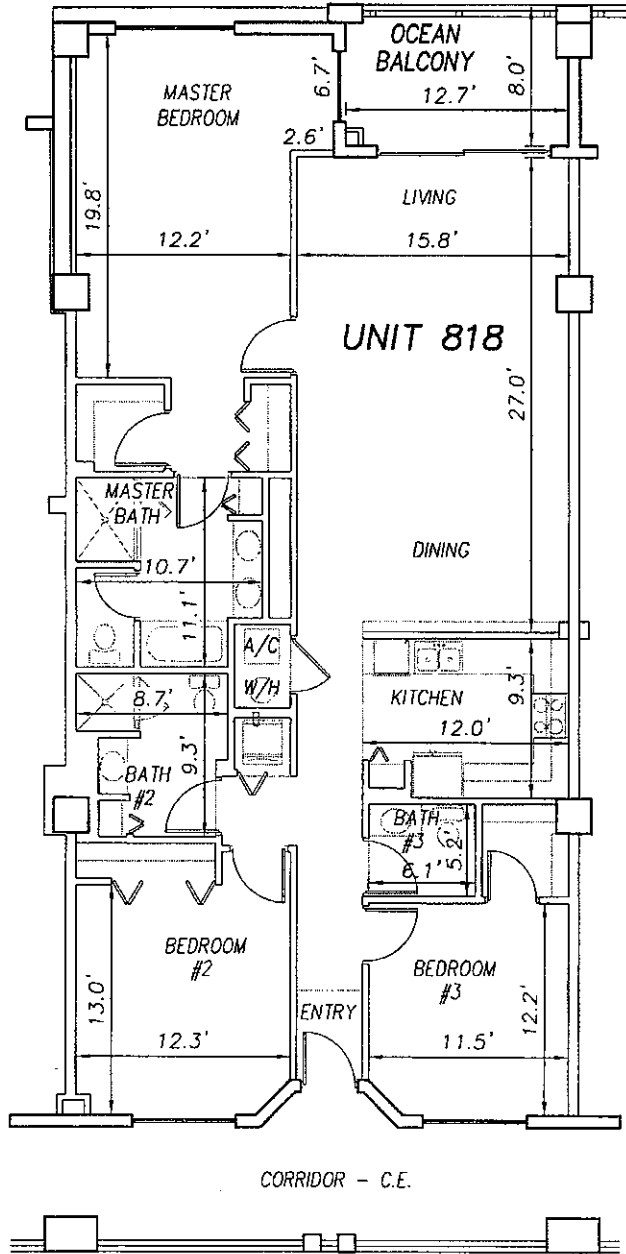
SHEET 206 OF 213 SHEETS

0 10 20

SCALE 1" = 10'

OFF REC 0983 PAGE 0368

EXHIBIT 'B'



UNIT 817

UNIT 819

\\survey\2001\land projects\2003\13070PCBW\dwg\CONDO-sh 188 - 213 8th Fl.dwg 09/11/2003 09:13:51 AM EDT

**SURF CLUB II  
CONDOMINIUM**

SITUATED IN MATANZAS SHORES  
FLAGLER COUNTY, FLORIDA

**EIGHTH FLOOR - UNIT 818 (South Wing)**



**TOMOKA ENGINEERING**

CIVIL ENGINEERING & LAND SURVEYING SINCE 1976  
DAYTONA BEACH FLAGLER/PALM COAST  
Main Office: 900 So. Ridgewood Ave., Daytona Beach, FL 32114  
Phone: 386-257-1600 Fax: 386-257-1601  
email: tomoka@tomoka-eng.com website: www.tomoka@tomoka-eng.com

LB 22232

DATE ISSUED: 07/23/2003

JOB # T3070PCBW1

SHEET 207 OF 213 SHEETS

0 10 20

OFF REC 0983 PAGE 0369

EXHIBIT 'B'

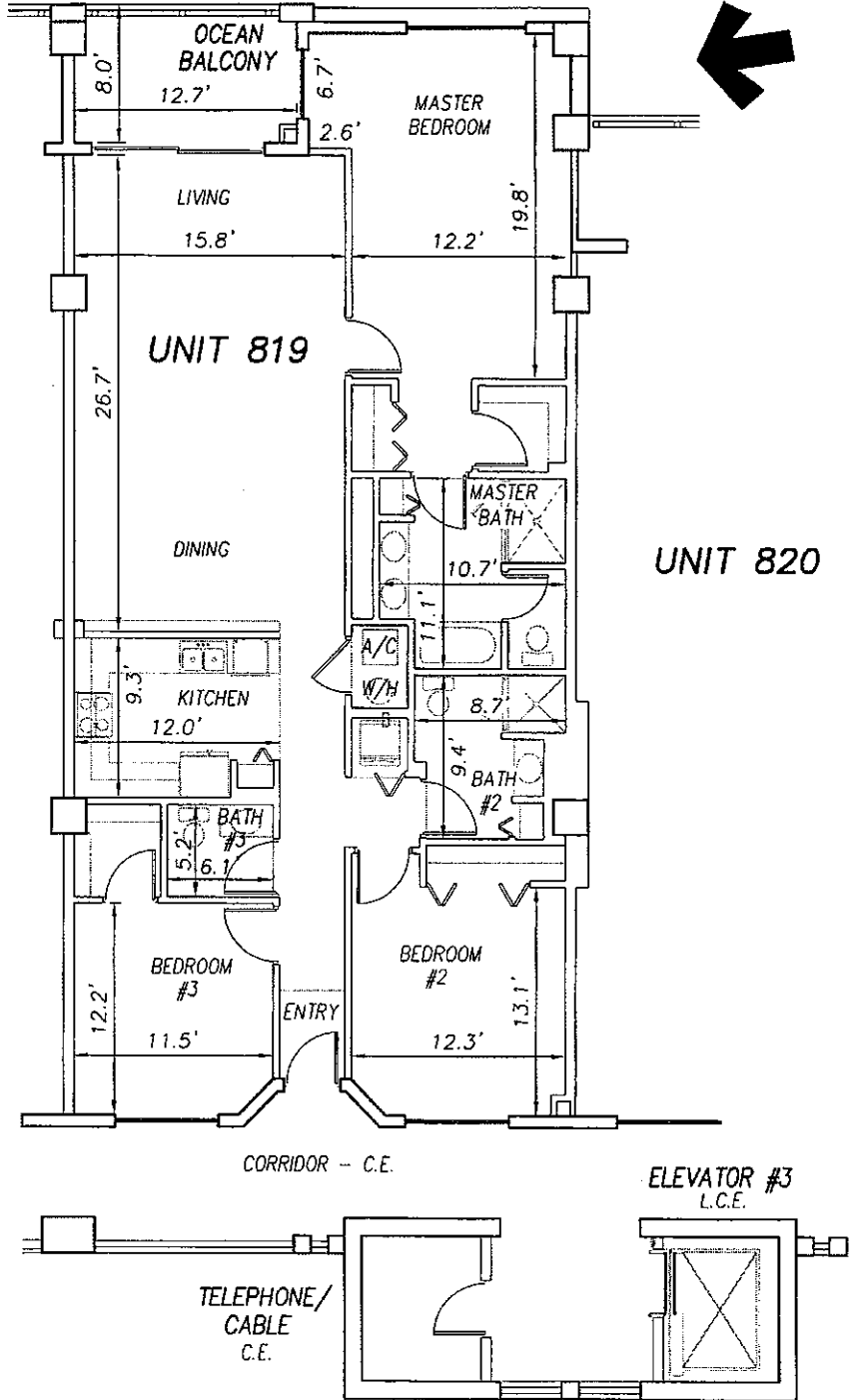
SCALE 1" = 10'



UNIT 818

UNIT 819

UNIT 820



**SURF CLUB II  
CONDOMINIUM**

SITUATED IN MATANZAS SHORES  
FLAGLER COUNTY, FLORIDA

**EIGHTH FLOOR - UNIT 819 (South Wing)**



**TOMOKA ENGINEERING**

CIVIL ENGINEERING & LAND SURVEYING SINCE 1976  
DAYTONA BEACH FLAGLER/PALM COAST

Main Office: 900 So. Ridgewood Ave., Daytona Beach, FL 32114  
Phone: 386-257-1600 Fax: 386-257-1601  
email: tomoka@tomoka-eng.com website: www.tomoka@tomoka-eng.com

DATE ISSUED: 07/23/2003

JOB # T3070PCBW1

SHEET 208 OF 213 SHEETS

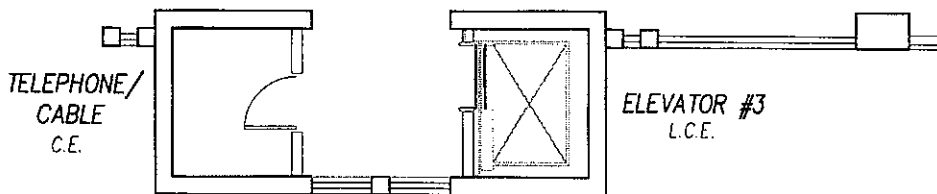
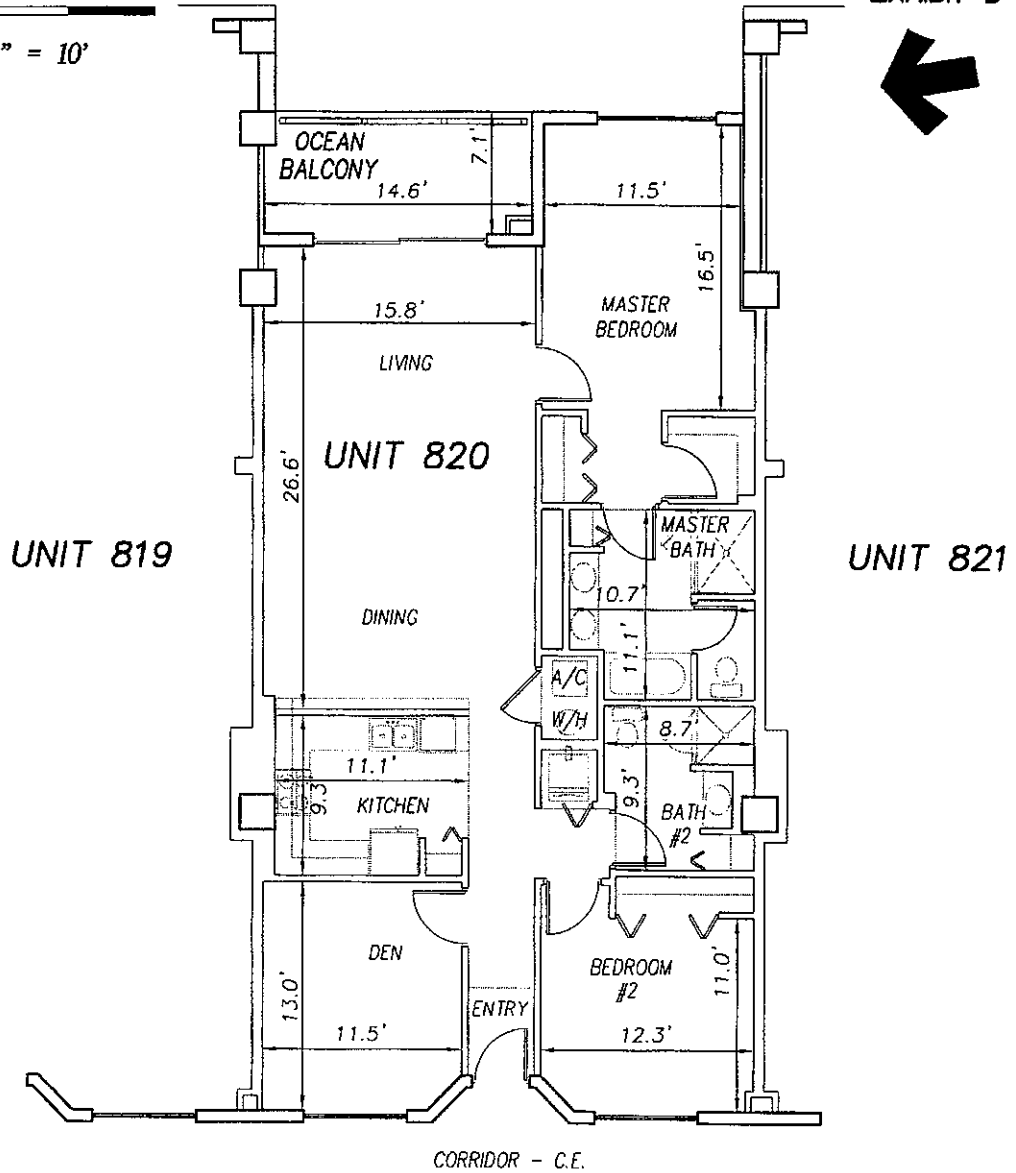
\\survey\2001\land projects\2003\T3070PCBW1\dwg\CONDO-sh 188 - 213 8th Fl.dwg 09/11/2003 09:13:51 AM EDT

0 10 20

OFF REC 0983 PAGE 0370

EXHIBIT 'B'

SCALE 1" = 10'



**SURF CLUB II  
CONDOMINIUM**

SITUATED IN MATANZAS SHORES  
FLAGLER COUNTY, FLORIDA

**EIGHTH FLOOR - UNIT 820 (South Wing)**



**TOMOKA ENGINEERING**

CIVIL ENGINEERING & LAND SURVEYING SINCE 1976  
DAYTONA BEACH FLAGLER/PALM COAST  
Main Office: 900 So. Ridgewood Ave., Daytona Beach, FL 32114  
Phone: 386-257-1600 Fax: 386-257-1601  
email: tomoka@tomoka-eng.com website: www.tomoka@tomoka-eng.com

DATE ISSUED: 07/23/2003

JOB # T3070PCBWI

SHEET 209 OF 213 SHEETS

\\survey\l2001\land projects\2003\T3070PCBWI\dwg\CONDO-sh 188 - 213 8th Fl.dwg 09/11/2003 09:13:51 AM EDT