

SIDEWALK

STAIRS

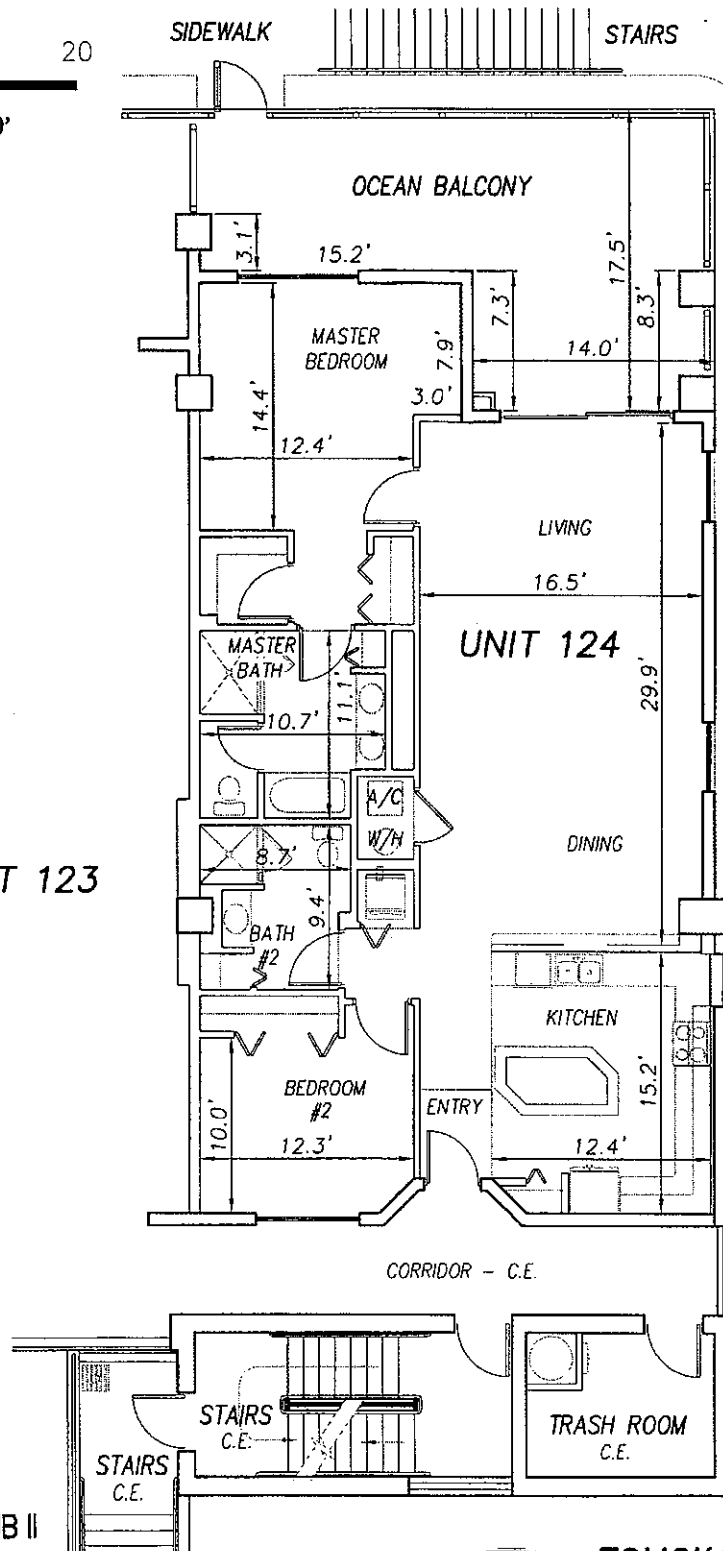
EXHIBIT 'B'



SIDEWALK

UNIT 123

UNIT 124



**SURF CLUB II
CONDOMINIUM**

SITUATED IN MATANZAS SHORES
FLAGLER COUNTY, FLORIDA

FIRST FLOOR - UNIT 124 (South Wing)



TOMOKA ENGINEERING

CIVIL ENGINEERING & LAND SURVEYING SINCE 1976
DAYTONA BEACH FLAGLER/PALM COAST
Main Office: 900 So. Ridgewood Ave., Daytona Beach, FL 32114
Phone: 386-257-1600 Fax: 386-257-1601
email: tomoka@tomoka-eng.com website: www.tomoka-engineering.com

DATE ISSUED: 07/23/2003

JOB # T3070PCBWI

SHEET 31 OF 213 SHEETS

P:\land projects T2003\T3070PCBWI\dwg\CONDO-sh 6 - 31 1st Fl.dwg 09/11/2003 09:14:59 AM EDT

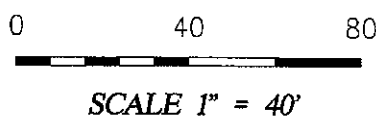
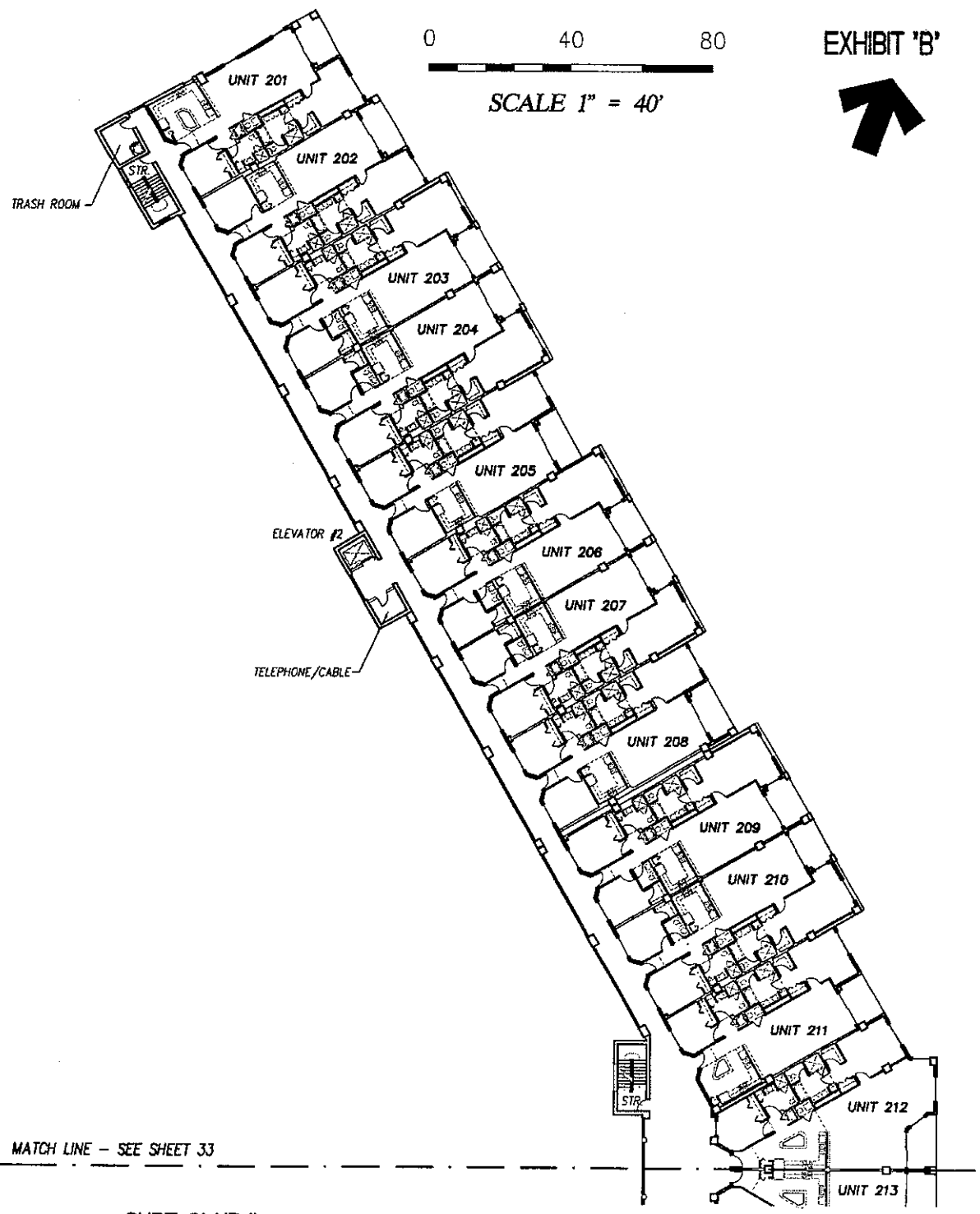


EXHIBIT 'B'
↑



MATCH LINE - SEE SHEET 33

**SURF CLUB II
CONDOMINIUM**

SITUATED IN MATANZAS SHORES
FLAGLER COUNTY, FLORIDA

SECOND FLOOR - OVERALL LAYOUT (North Wing)



TOMOKA ENGINEERING
CIVIL ENGINEERING & LAND SURVEYING SINCE 1976
DAYTONA BEACH FLAGLER/PALM COAST
Main Office: 900 So. Ridgewood Ave., Daytona Beach, FL 32114
Phone: 386-257-1800 Fax: 386-257-1801
web: tomoka@tomoka-eng.com website: www.tomoka-tomoka-eng.com

DATE ISSUED: 07/23/2003

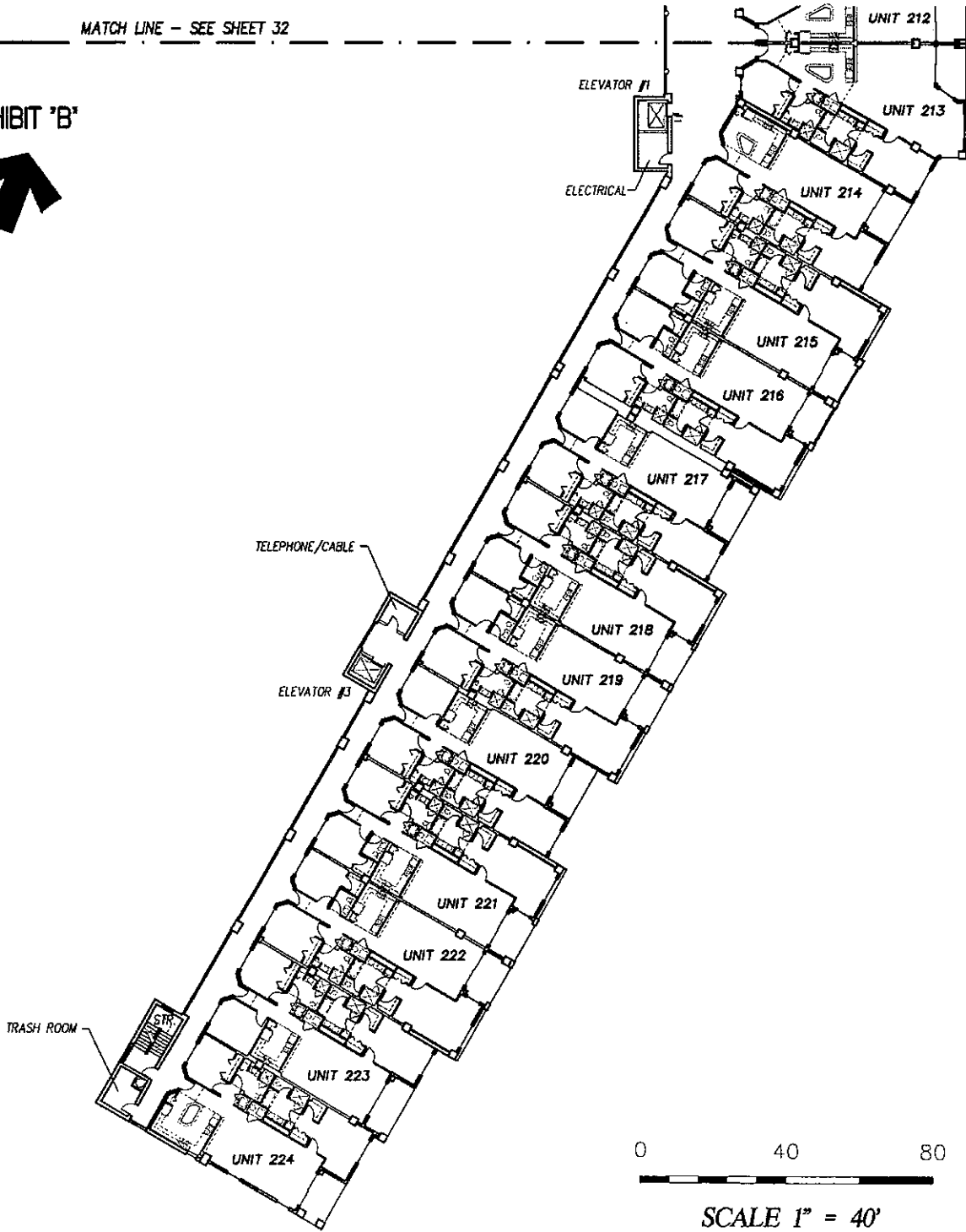
JOB # T3070PCBW1

SHEET 32 OF 213 SHEETS

P:\land projects T2003\T3070PCBW1.dwg\CONDO-sh 32 - 57 2nd Fl.dwg 09/11/2003 09:23:50 AM EDT

MATCH LINE - SEE SHEET 32

EXHIBIT 'B'



**SURF CLUB II
CONDOMINIUM**

SITUATED IN MATANZAS SHORES
FLAGLER COUNTY, FLORIDA

SECOND FLOOR - OVERALL LAYOUT (South Wing)



TOMOKA ENGINEERING

CIVIL ENGINEERING & LAND SURVEYING SINCE 1976
DAYTONA BEACH FLAGLER/PALM COAST
Main Office: 900 So. Ridgewood Ave., Daytona Beach, FL 32114
Phone: 386-257-1600 Fax: 386-257-1601
email: tomoka@tomoka-eng.com website: www.tomoka@tomoka-eng.com

DATE ISSUED: 07/23/2003

JOB # T3070PCBWI

SHEET 33 OF 213 SHEETS

P:\land projects T2003\T3070PCBWI\dwg\COND00--sh 32 - 57 2nd Flidwg 09/11/2003 09:23:50 AM EDT

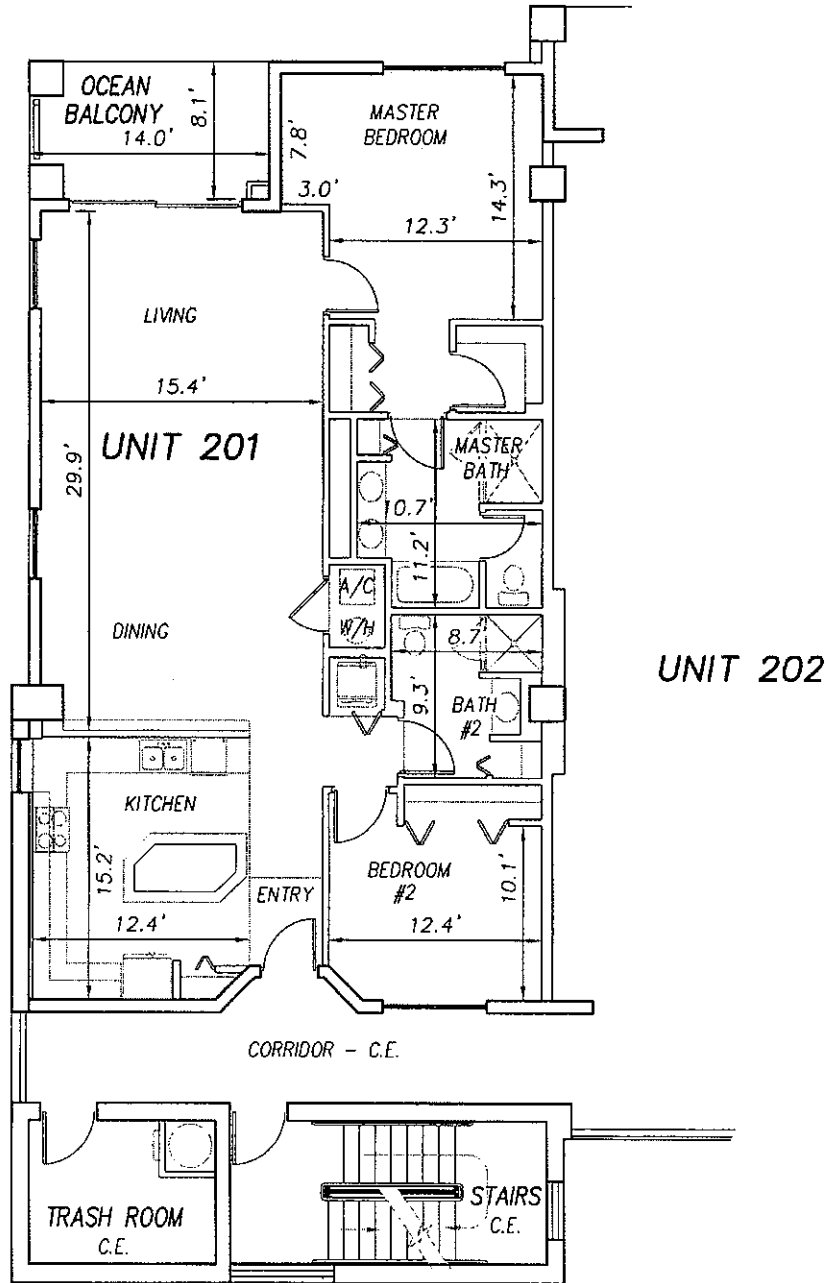
0 10 20



SCALE 1" = 10'

OFF REC 0983 PAGE 0195

EXHIBIT 'B'



P:\land projects T2003\T3070PCBWI\dwg\CONDO-sh 32 - 57 2nd Fl.dwg 09/11/2003 09:23:50 AM EDT

**SURF CLUB II
CONDOMINIUM**
SITUATED IN MATANZAS SHORES
FLAGLER COUNTY, FLORIDA
SECOND FLOOR - UNIT 201 (North Wing)



TOMOKA ENGINEERING
CIVIL ENGINEERING & LAND SURVEYING SINCE 1976
DAYTONA BEACH FLAGLER/PALM COAST
Main Office: 900 So. Ridgewood Ave., Daytona Beach, FL 32114
Phone: 386-257-1800 Fax: 386-257-1801
email: tomoka@tomoka-eng.com web site: www.tomoka@tomoka-eng.com

DATE ISSUED: 07/23/2003

JOB # T3070PCBWI

SHEET 34 OF 213 SHEETS

0 10 20

SCALE 1" = 10'

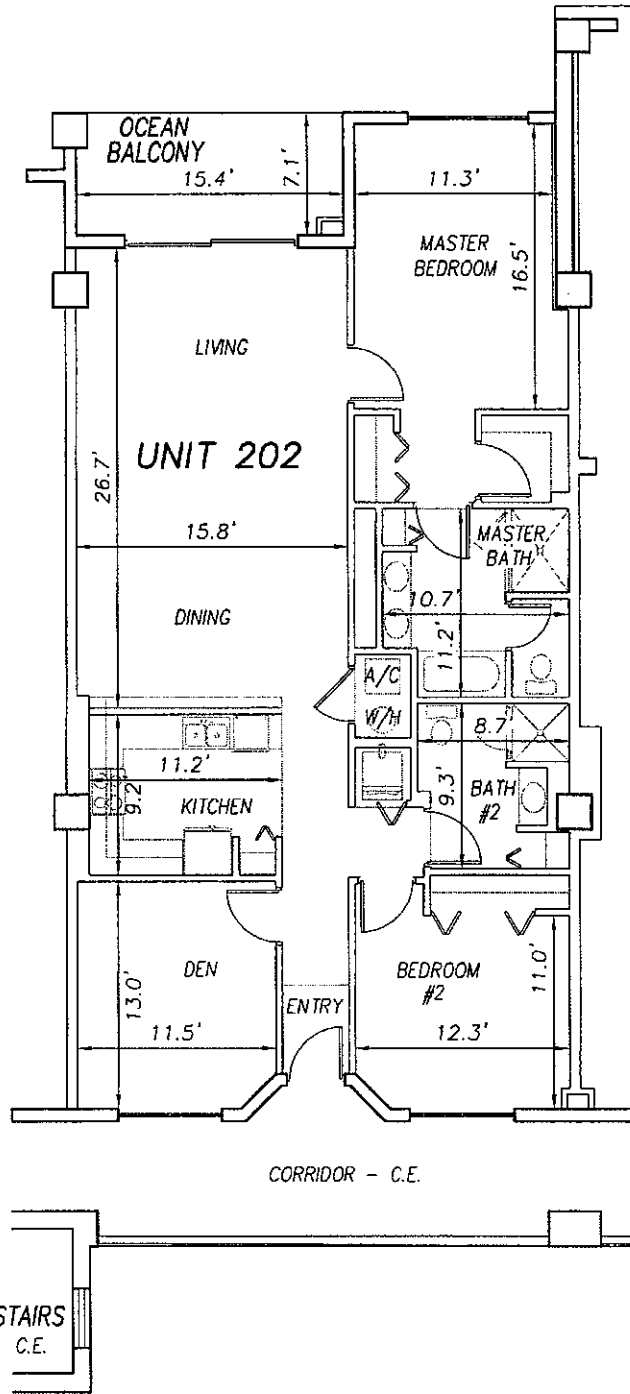
OFF REC 0983 PAGE 0196

EXHIBIT 'B'



UNIT 201

UNIT 203



**SURF CLUB II
CONDOMINIUM**

SITUATED IN MATANZAS SHORES
FLAGLER COUNTY, FLORIDA

SECOND FLOOR - UNIT 202 (North Wing)



TOMOKA ENGINEERING

CIVIL ENGINEERING & LAND SURVEYING SINCE 1976
DAYTONA BEACH FLAGLER/PALM COAST
Main Office: 800 So. Ridgewood Ave., Daytona Beach, FL 32114
Phone: 386-257-1800 Fax: 386-257-1801
email: tomoka@tomoka-eng.com website: www.tomoka@tomoka-eng.com

DATE ISSUED: 07/23/2003

JOB # T3070PCBW1

SHEET 35 OF 213 SHEETS

P:\land projects T2003\T3070PCBW\dwg\CONDO-sh 32 - 57 2nd Fl.dwg 09/11/2003 09:23:50 AM EDT

0 10 20

SCALE 1" = 10'

OFF REC 0983 PAGE 0197

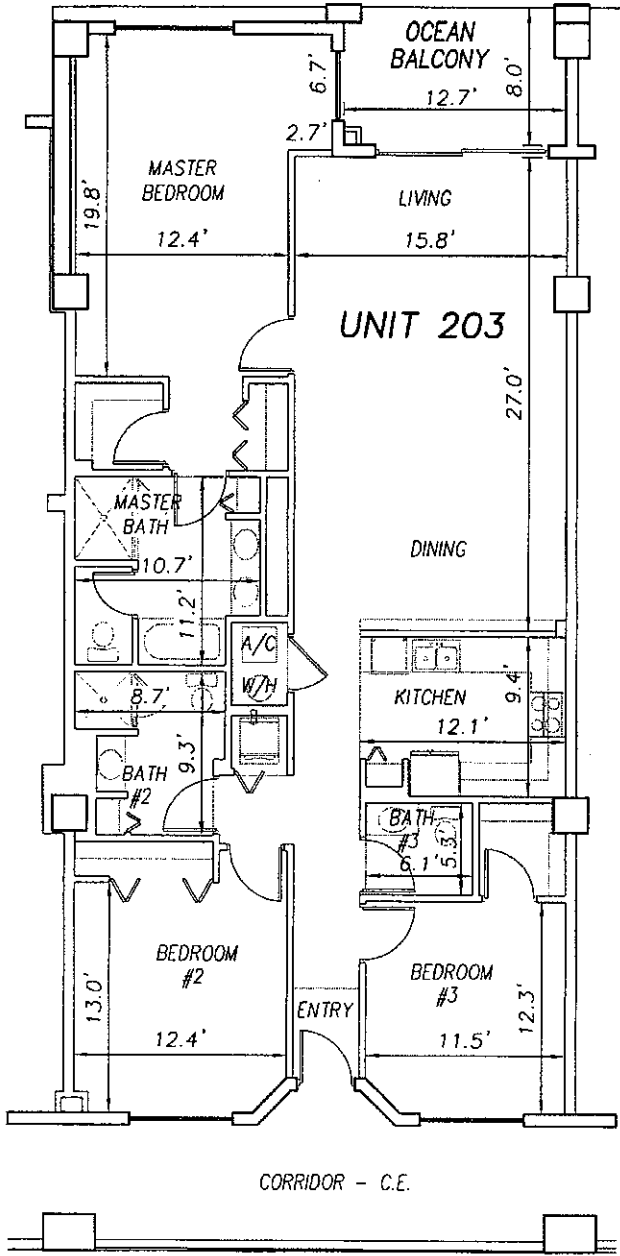
EXHIBIT 'B'



UNIT 202

UNIT 203

UNIT 204



P:\land projects T2003\T3070PCBW\dwg\CONDO-sh 32 - 57 2nd Fl.dwg 09/11/2003 09:23:50 AM EDT

SURF CLUB II
CONDOMINIUM
 SITUATED IN MATANZAS SHORES
 FLAGLER COUNTY, FLORIDA
SECOND FLOOR - UNIT 203 (North Wing)



TOMOKA ENGINEERING
 CIVIL ENGINEERING & LAND SURVEYING SINCE 1976
 DAYTONA BEACH FLAGLER/PALM COAST
 Main Office: 900 So. Ridgewood Ave., Daytona Beach, FL 32114
 Phone: 386-257-1600 Fax: 386-257-1801
 email: tomoka@tomoka-eng.com website: www.tomoka@tomoka-eng.com

DATE ISSUED: 07/23/2003

JOB # T3070PCBWI

SHEET 36 OF 213 SHEETS

0 10 20

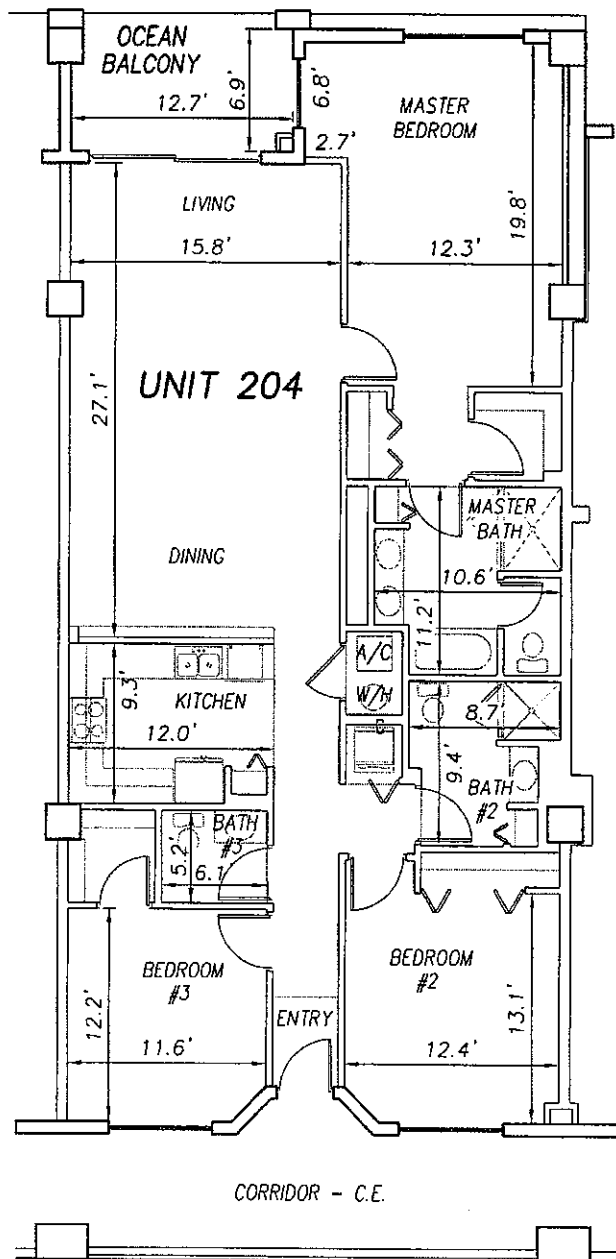
SCALE 1" = 10'

OFF REC 0983 PAGE 0198 EXHIBIT 'B'



UNIT 203

UNIT 205



**SURF CLUB II
CONDOMINIUM**

SITUATED IN MATANZAS SHORES
FLAGLER COUNTY, FLORIDA

SECOND FLOOR - UNIT 204 (North Wing)



TOMOKA ENGINEERING

CIVIL ENGINEERING & LAND SURVEYING SINCE 1976
DAYTONA BEACH FLAGLER/PALM COAST
Main Office: 900 So. Ridgewood Ave., Daytona Beach, FL 32114
Phone: 386-257-1600 Fax: 386-257-1601
email: tomoka@tomoka-eng.com website: www.tomoka-eng.com

LB #2232

DATE ISSUED: 07/23/2003

JOB # T3070PCBWI

SHEET 37 OF 213 SHEETS

P:\land projects T2003\T3070PCBWI\dwg\CONDO-sh 32 - 57 2nd Fl.dwg 09/11/2003 09:23:50 AM EDT

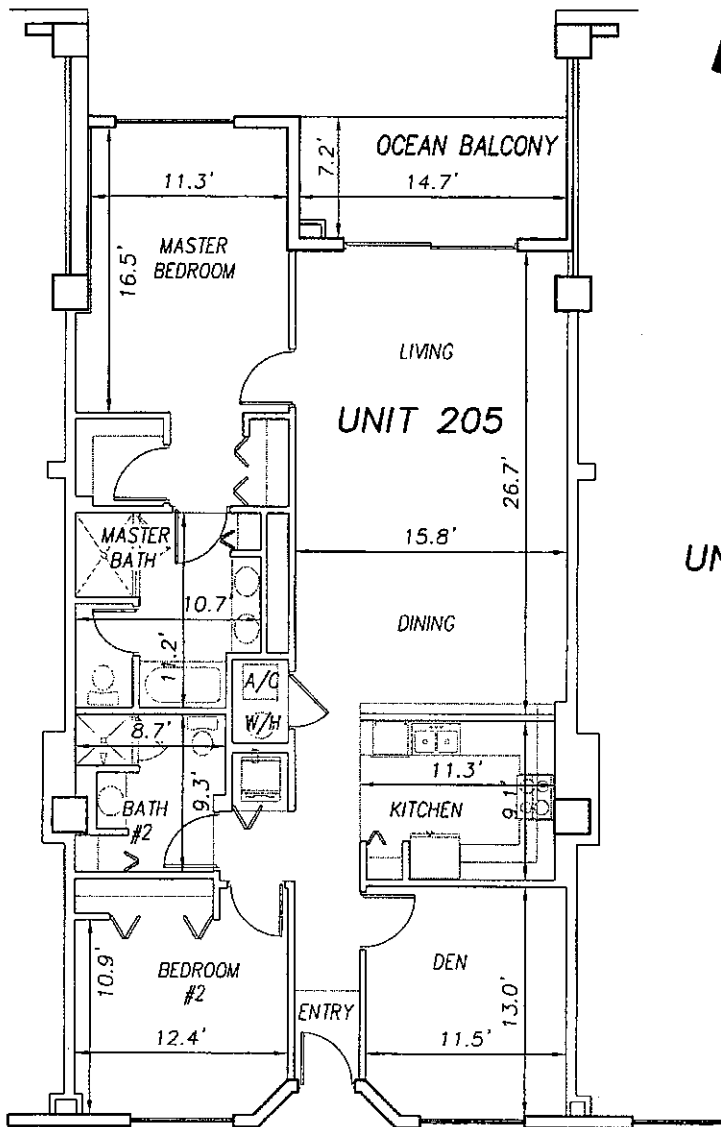
0 10 20

SCALE 1" = 10'



UNIT 204

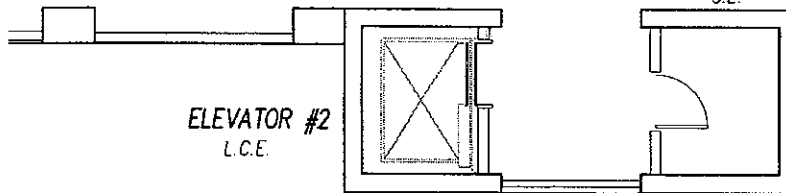
UNIT 206



CORRIDOR - C.E.

TELEPHONE/CABLE C.E.

ELEVATOR #2 L.C.E.



**SURF CLUB II
CONDOMINIUM**

SITUATED IN MATANZAS SHORES
FLAGLER COUNTY, FLORIDA

SECOND FLOOR - UNIT 205 (North Wing)



TOMOKA ENGINEERING

CIVIL ENGINEERING & LAND SURVEYING SINCE 1976
DAYTONA BEACH FLAGLER/PALM COAST
Main Office: 900 So. Ridgewood Ave., Daytona Beach, FL 32114
Phone: 386-257-1600 Fax: 386-257-1601
email: tomoka@tomoka-eng.com website: www.tomoka@tomoka-eng.com

DATE ISSUED: 07/23/2003

JOB # T3070PCBWI

SHEET 38 OF 213 SHEETS

P:\land projects 12003\T3070PCBWI\dwg\CONDO-sh 32 - 57 2nd Fl.dwg 09/11/2003 09:23:50 AM EDT

0 10 20

SCALE 1" = 10'

OFF REC 0983 PAGE 0200

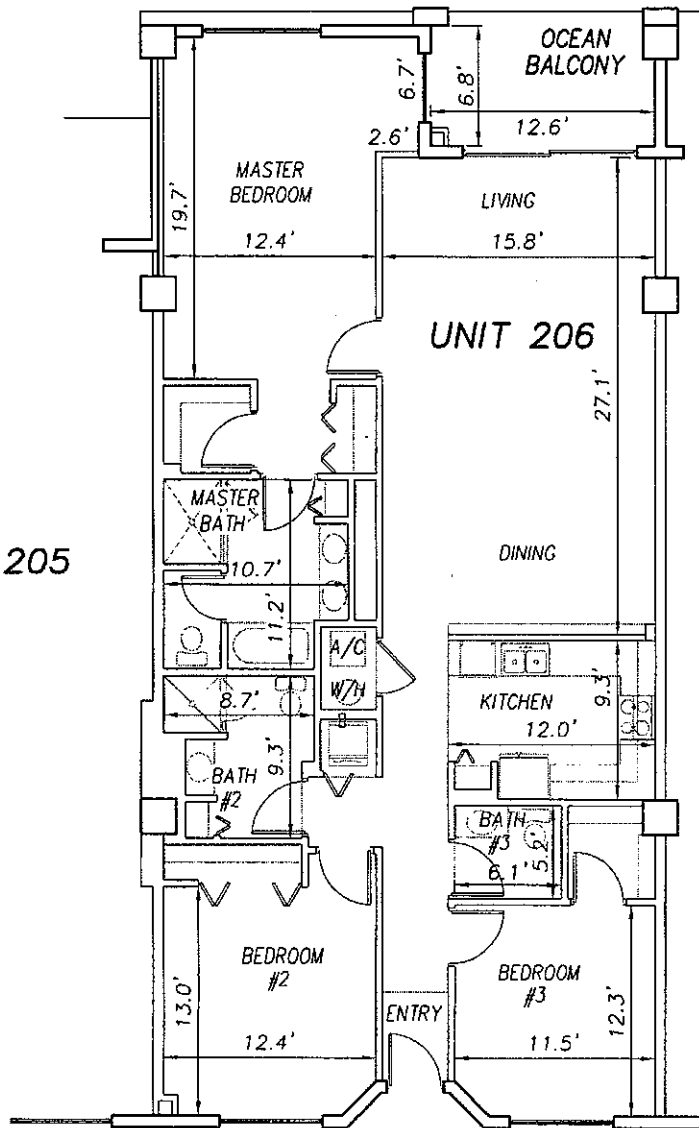
EXHIBIT 'B'



UNIT 205

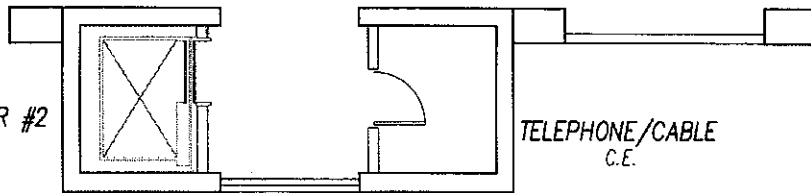
UNIT 206

UNIT 207



CORRIDOR - C.E.

ELEVATOR #2
L.C.E.



TELEPHONE/CABLE
C.E.

**SURF CLUB II
CONDOMINIUM**

SITUATED IN MATANZAS SHORES
FLAGLER COUNTY, FLORIDA

SECOND FLOOR - UNIT 206 (North Wing)



TOMOKA ENGINEERING

CIVIL ENGINEERING & LAND SURVEYING SINCE 1976
DAYTONA BEACH FLAGLER/PALM COAST
Main Office: 900 So. Ridgewood Ave., Daytona Beach, FL 32114
Phone: 386-257-1600 Fax: 386-257-1601
email: tomoka@tomoka-eng.com web site: www.tomoka@tomoka-eng.com

DATE ISSUED: 07/23/2003

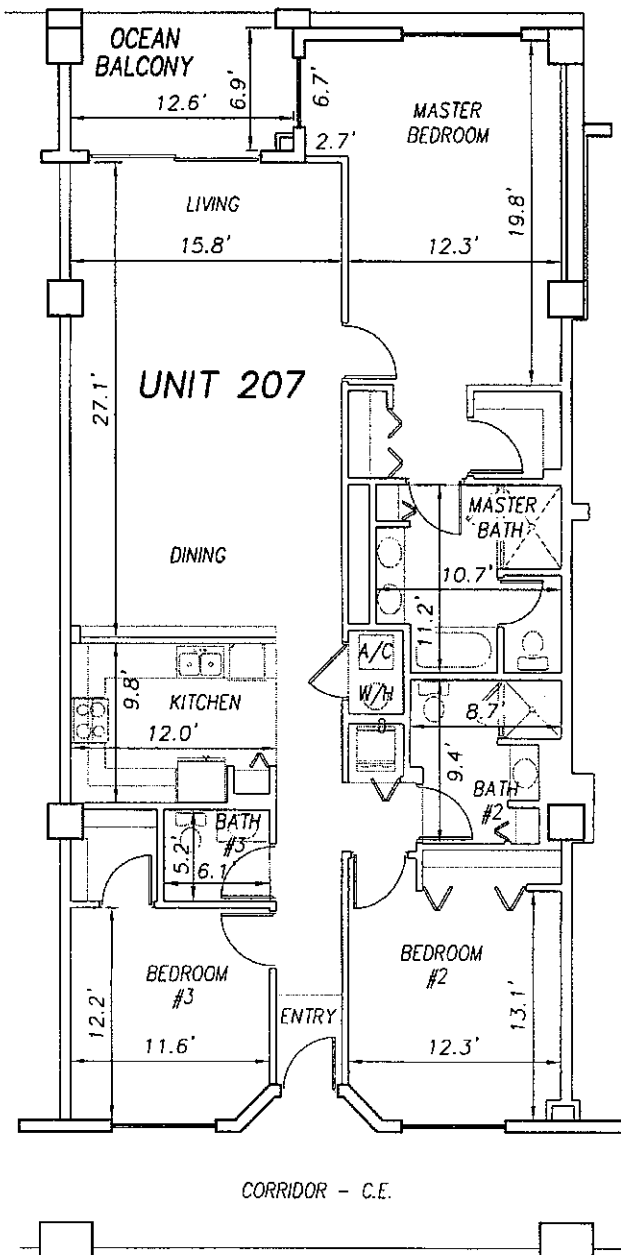
JOB # T3070PCBW1

SHEET 39 OF 213 SHEETS

P:\land projects T2003\T3070PCBW1.dwg\CONDO-sh 32 - 57 2nd Fl.dwg 09/11/2003 09:23:50 AM EDT

0 10 20

SCALE 1" = 10'



UNIT 206

UNIT 208

**SURF CLUB II
CONDOMINIUM**

SITUATED IN MATANZAS SHORES
FLAGLER COUNTY, FLORIDA

SECOND FLOOR - UNIT 207 (North Wing)



TOMOKA ENGINEERING

CIVIL ENGINEERING & LAND SURVEYING SINCE 1976
DAYTONA BEACH FLAGLER/PALM COAST
Main Office 900 So. Ridgewood Ave., Daytona Beach, FL 32114
Phone: 386-257-1600 Fax: 386-257-1501
email: tomoka@tomoka-eng.com website: www.tomoka-engineering.com

DATE ISSUED: 07/23/2003

JOB # T3070PCBW1

SHEET 40 OF 213 SHEETS

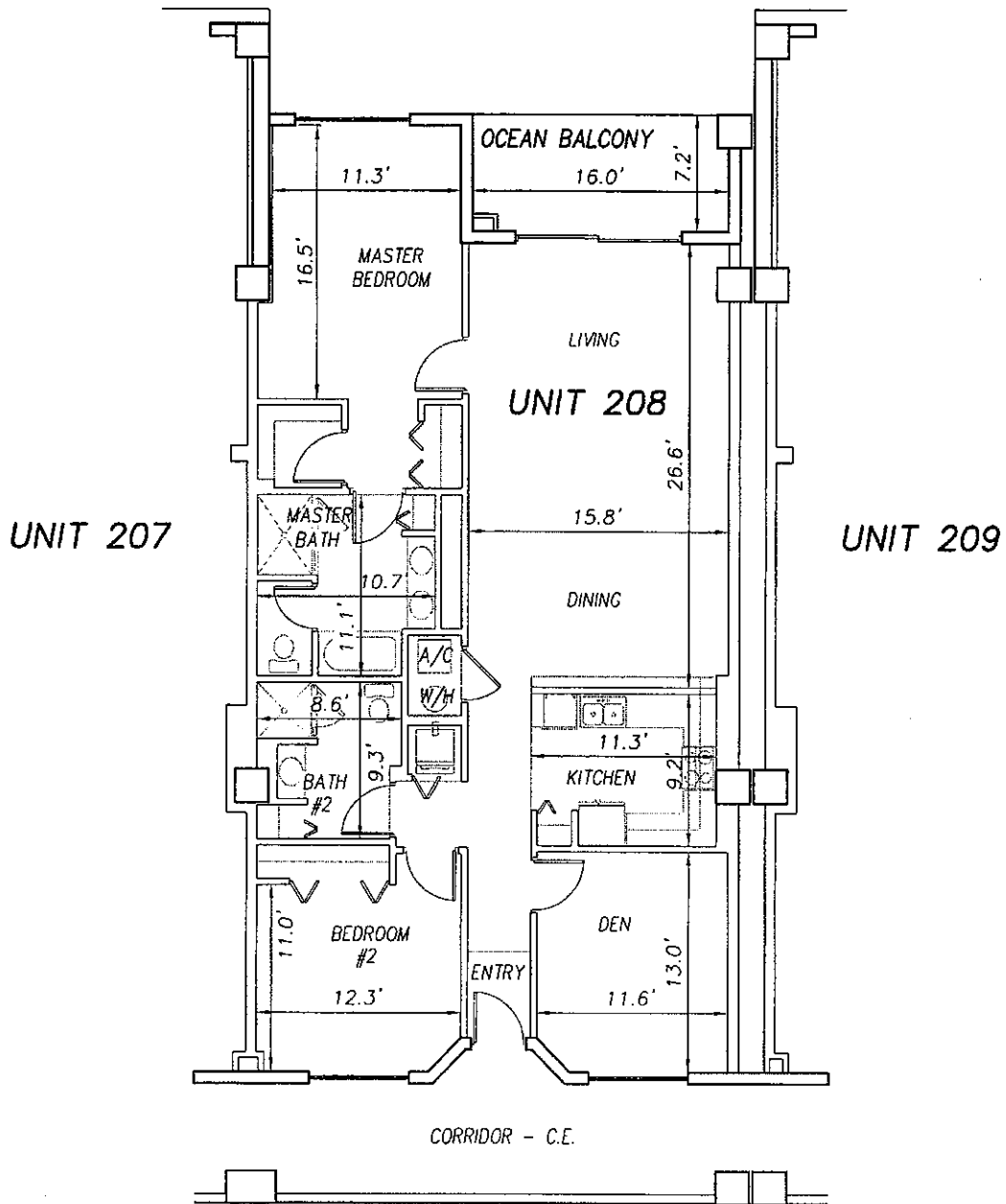
P:\land projects T2003\T3070PCBW1.dwg\CONDO-sh 32 - 57 2nd Fl.dwg 09/11/2003 09:23:50 AM EDT

0 10 20

SCALE 1" = 10'

OFF REC 0983 PAGE 0202

EXHIBIT 'B'



P:\land projects \2003\T3070PCBWI\dwg\CONDO-sh 32 - 57 2nd Fl.dwg 09/11/2003 09:23:50 AM EDT

SURF CLUB II
CONDOMINIUM
 SITUATED IN MATANZAS SHORES
 FLAGLER COUNTY, FLORIDA
SECOND FLOOR - UNIT 208 (North Wing)



TOMOKA ENGINEERING
 CIVIL ENGINEERING & LAND SURVEYING SINCE 1976
 DAYTONA BEACH FLAGLER/PALM COAST
 Main Office: 900 So. Ridgewood Ave., Daytona Beach, FL 32114
 Phone: 386-257-1800 Fax: 386-257-1801
 email: tomoka@tomoka-eng.com website: www.tomoka@tomoka-eng.com

DATE ISSUED: 07/23/2003

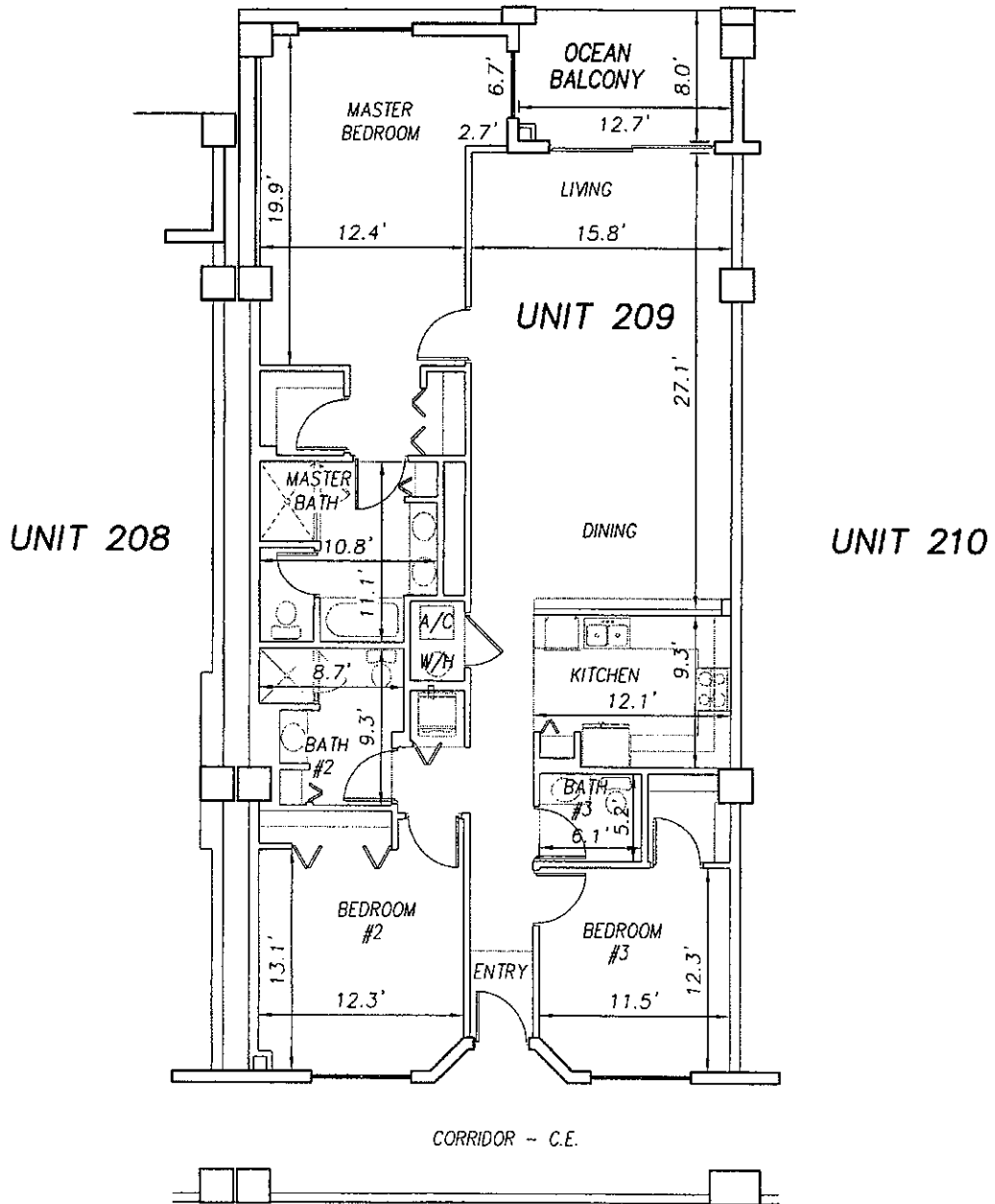
JOB # T3070PCBWI

SHEET 41 OF 213 SHEETS

0 10 20

SCALE 1" = 10'

OFF REC 0983 PAGE 0203 EXHIBIT 'B'



P:\land projects\T2003\T3070PCBW\dwg\CONDO-sh 32 - 57 2nd Fl.dwg 09/11/2003 09:23:50 AM EDT

SURF CLUB II
CONDOMINIUM
 SITUATED IN MATANZAS SHORES
 FLAGLER COUNTY, FLORIDA
SECOND FLOOR - UNIT 209 (North Wing)



TOMOKA ENGINEERING
 CIVIL ENGINEERING & LAND SURVEYING SINCE 1976
 DAYTONA BEACH FLAGLER/PALM COAST
 Main Office: 900 So. Ridgewood Ave., Daytona Beach, FL 32114
 Phone: 386-257-1600 Fax: 386-257-1601
 email: tomoka@tomoka-eng.com website: www.tomoka@tomoka-eng.com

DATE ISSUED: 07/23/2003

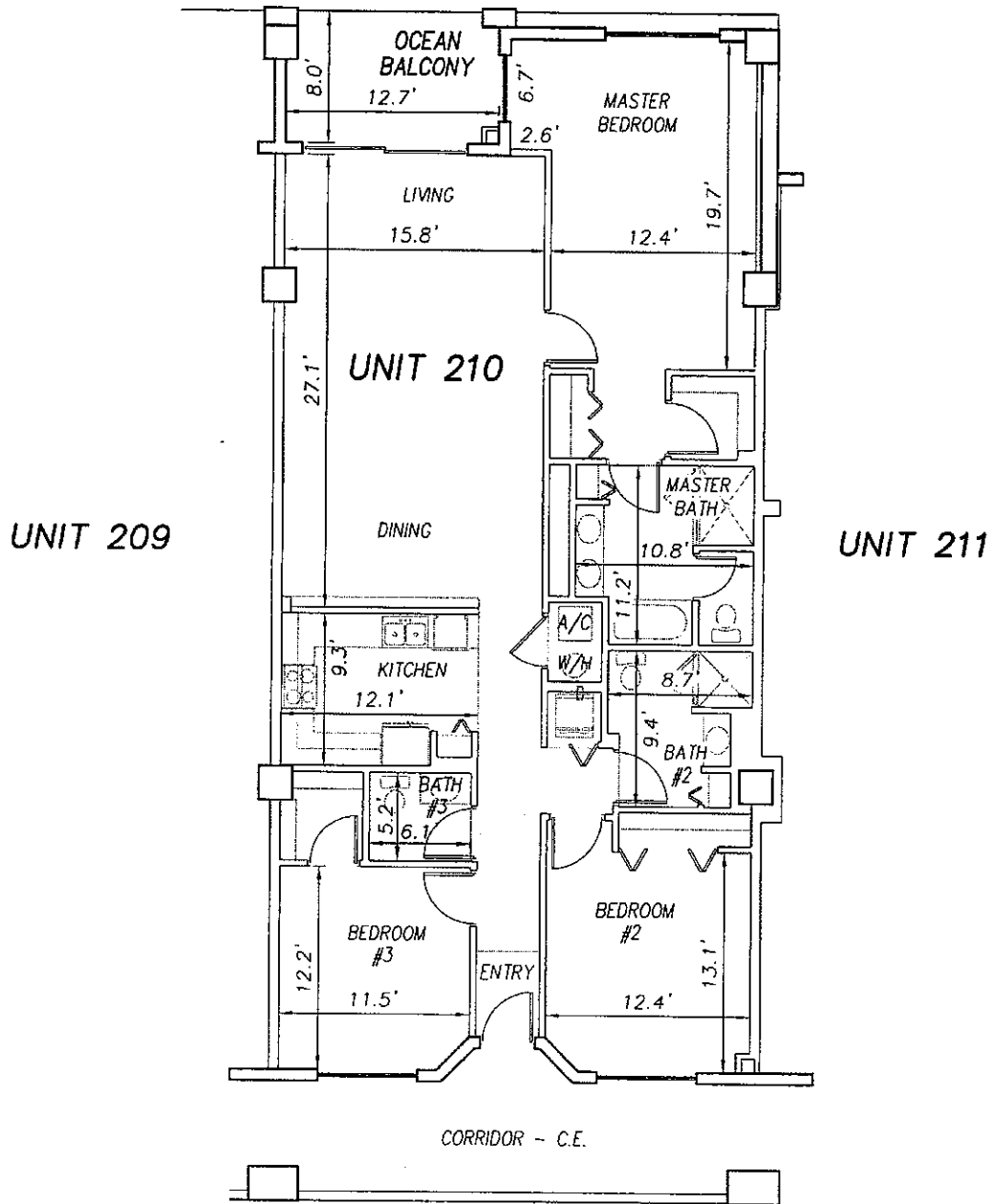
JOB # T3070PCBWI

SHEET 42 OF 213 SHEETS

0 10 20

SCALE 1" = 10'

OFF REC 0983 PAGE 0204 EXHIBIT 'B'



P:\land projects \2003\T3070PCBW\dwg\CONDO--sh 32 - 57 2nd Fl.dwg 09/11/2003 09:23:50 AM EDT

SURF CLUB II
CONDOMINIUM
 SITUATED IN MATANZAS SHORES
 FLAGLER COUNTY, FLORIDA
SECOND FLOOR - UNIT 210 (North Wing)



TOMOKA ENGINEERING
 CIVIL ENGINEERING & LAND SURVEYING SINCE 1976
 DAYTONA BEACH FLAGLER/PALM COAST
 Mch Office: 900 So. Ridgewood Ave., Daytona Beach, FL 32114
 Phone: 386-257-1600 Fax: 386-257-1601
 e-mail: tomoka@tomoka-eng.com web site: www.tomoka@tomoka-eng.com

DATE ISSUED: 07/23/2003

JOB # T3070PCBW

SHEET 43 OF 213 SHEETS

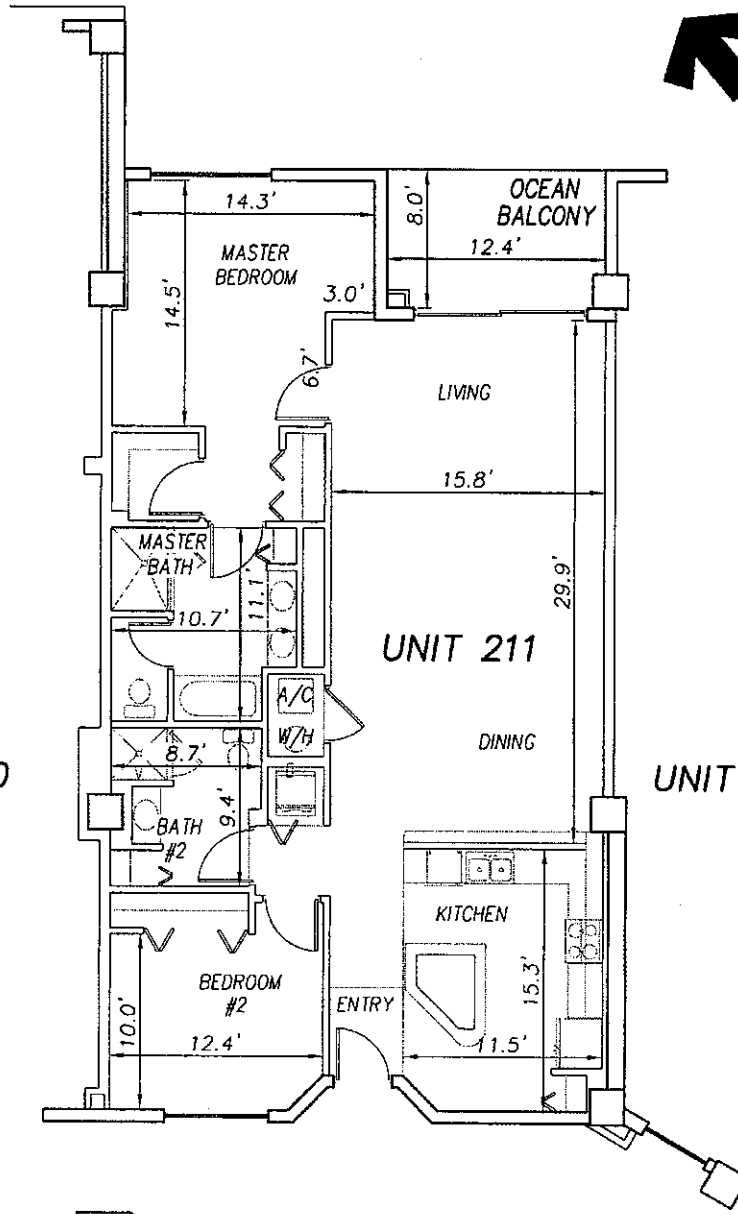
0 10 20

SCALE 1" = 10'

OFF REC 0983 PAGE 0205 EXHIBIT 'B'



UNIT 210



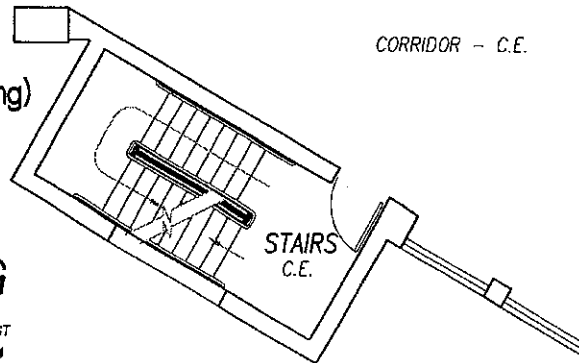
UNIT 212

**SURF CLUB II
CONDOMINIUM**

SITUATED IN MATANZAS SHORES
FLAGLER COUNTY, FLORIDA

SECOND FLOOR - UNIT 211 (North Wing)

CORRIDOR - C.E.



TOMOKA ENGINEERING
CIVIL ENGINEERING & LAND SURVEYING SINCE 1976
DAYTONA BEACH FLAGLER/PALM COAST
Main Office: 900 So. Ridgewood Ave., Daytona Beach, FL 32114
Phone: 386-257-1600 Fax: 386-257-1601
email: tomoka@tomoka-eng.com website: www.tomokaof.com

DATE ISSUED: 07/23/2003

JOB # T3070PCBWI

SHEET 44 OF 213 SHEETS

P:\land projects T2003\T3070PCBWI\dwg\CONDO-sh 32 - 57 2nd Fl.dwg 09/11/2003 09:23:50 AM EDT

0 10 20

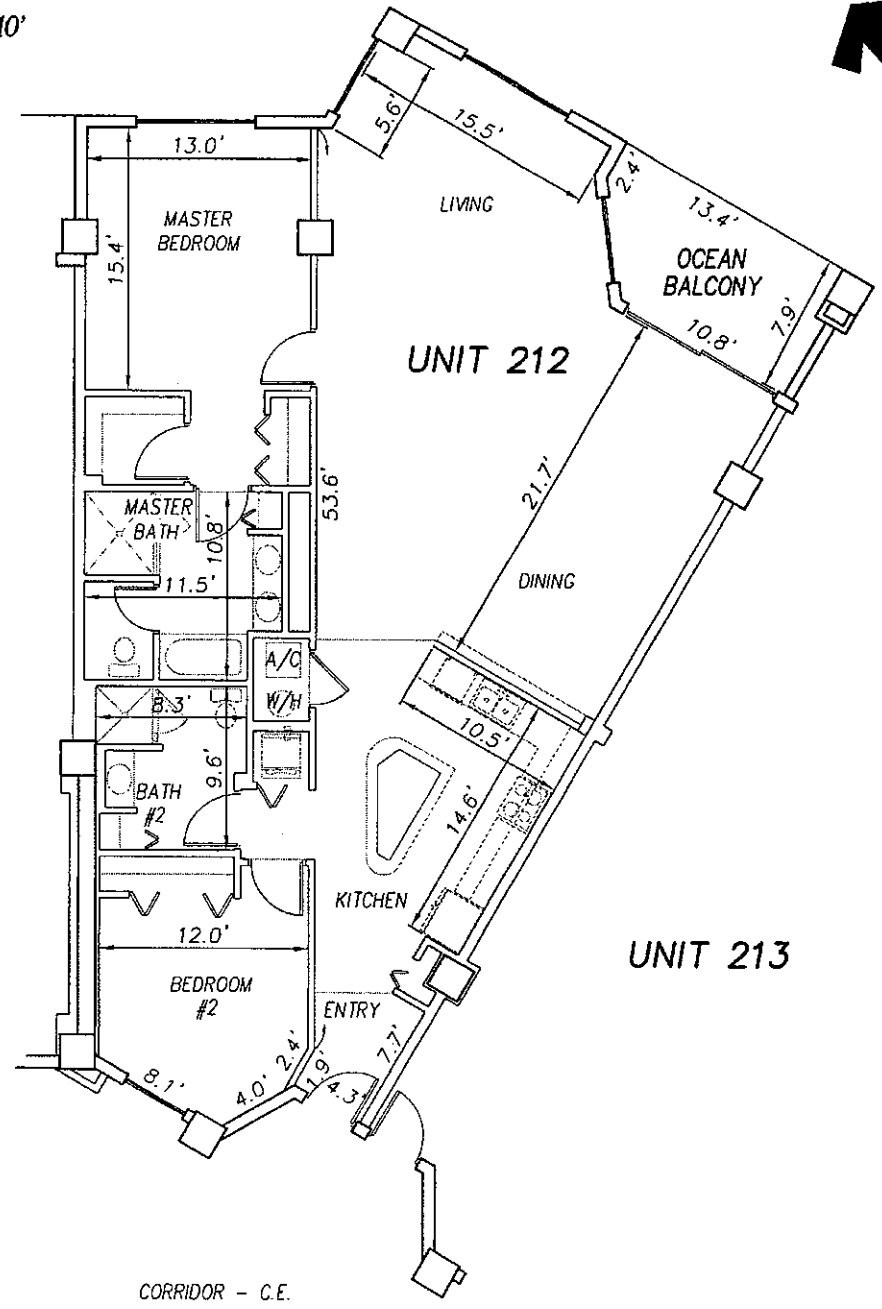
SCALE 1" = 10'



UNIT 211

UNIT 212

UNIT 213



P:\land projects T2003\T3070PCBWI\dwg\CONDO-sh 32 - 57 2nd Fl.dwg 09/11/2003 09:23:50 AM EDT

SURF CLUB II
CONDOMINIUM
 SITUATED IN MATANZAS SHORES
 FLAGLER COUNTY, FLORIDA
SECOND FLOOR - UNIT 212 (North Wing)



TOMOKA ENGINEERING
 CIVIL ENGINEERING & LAND SURVEYING SINCE 1976
 DAYTONA BEACH FLAGLER/PALM COAST
 Main Office: 900 So. Ridgewood Ave., Daytona Beach, FL 32114
 Phone: 386-257-1900 Fax: 386-257-1901
 email: tomoka@tomoka-eng.com website: www.tomoka@tomoka-eng.com

DATE ISSUED: 07/23/2003

JOB # T3070PCBWI

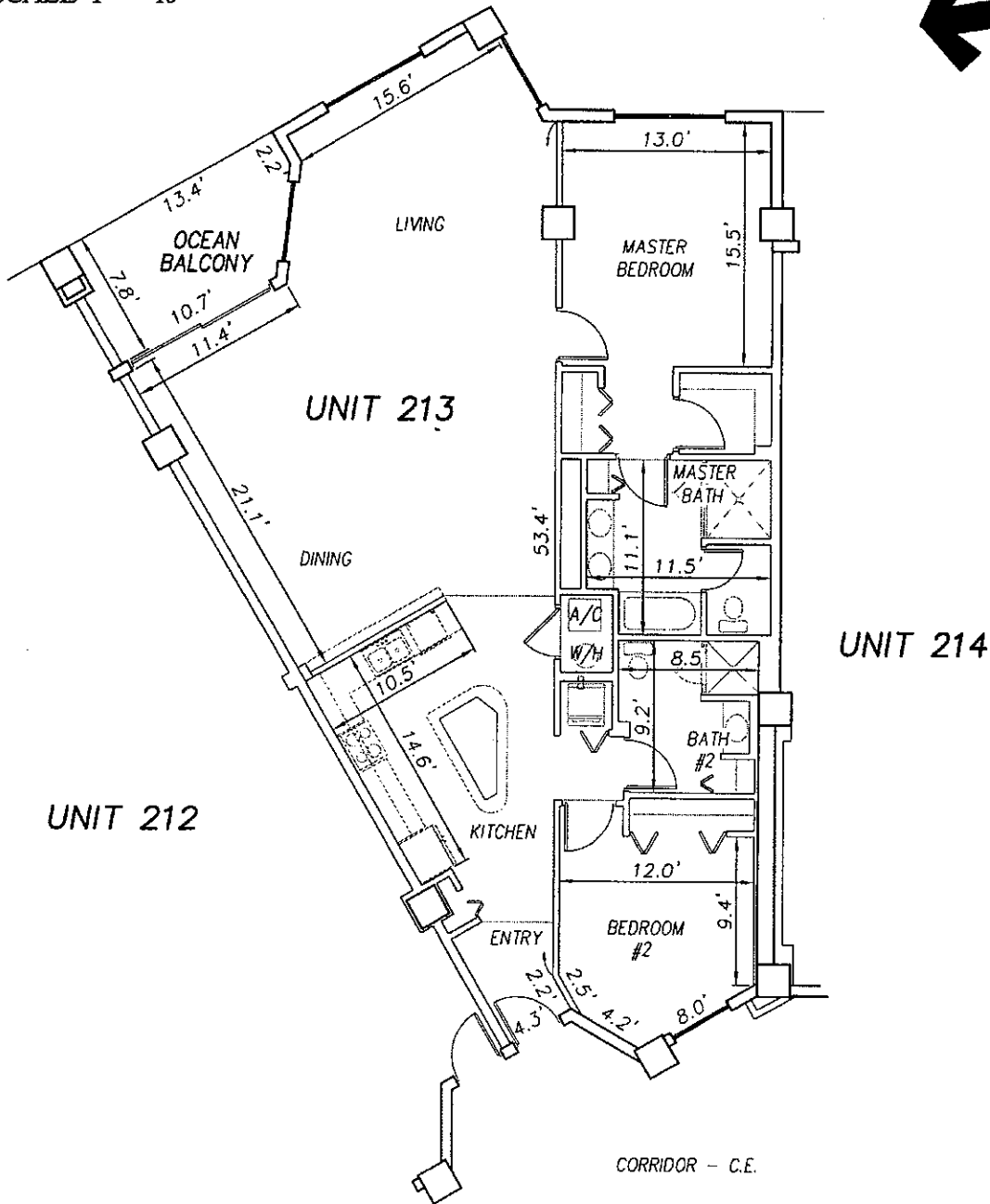
SHEET 45 OF 213 SHEETS

0 10 20

SCALE 1" = 10'

OFF REC 0983 PAGE 0207

EXHIBIT 'B'



P:\land projects T2003\T3070PCBWI\dwg\CONDO-sh 32 - 57 2nd Fl.dwg 09/11/2003 09:23:50 AM EDT

**SURF CLUB II
CONDOMINIUM**
SITUATED IN MATANZAS SHORES
FLAGLER COUNTY, FLORIDA
SECOND FLOOR - UNIT 213 (South Wing)



TOMOKA ENGINEERING
CIVIL ENGINEERING & LAND SURVEYING SINCE 1976
DAYTONA BEACH FLAGLER/PALM COAST
Main Office: 900 So. Ridgewood Ave., Daytona Beach, FL 32114
Phone: 386-257-1800 Fax: 386-257-1801
email: tomoka@tomoka-eng.com www: www.tomoka-engineering.com

DATE ISSUED: 07/23/2003

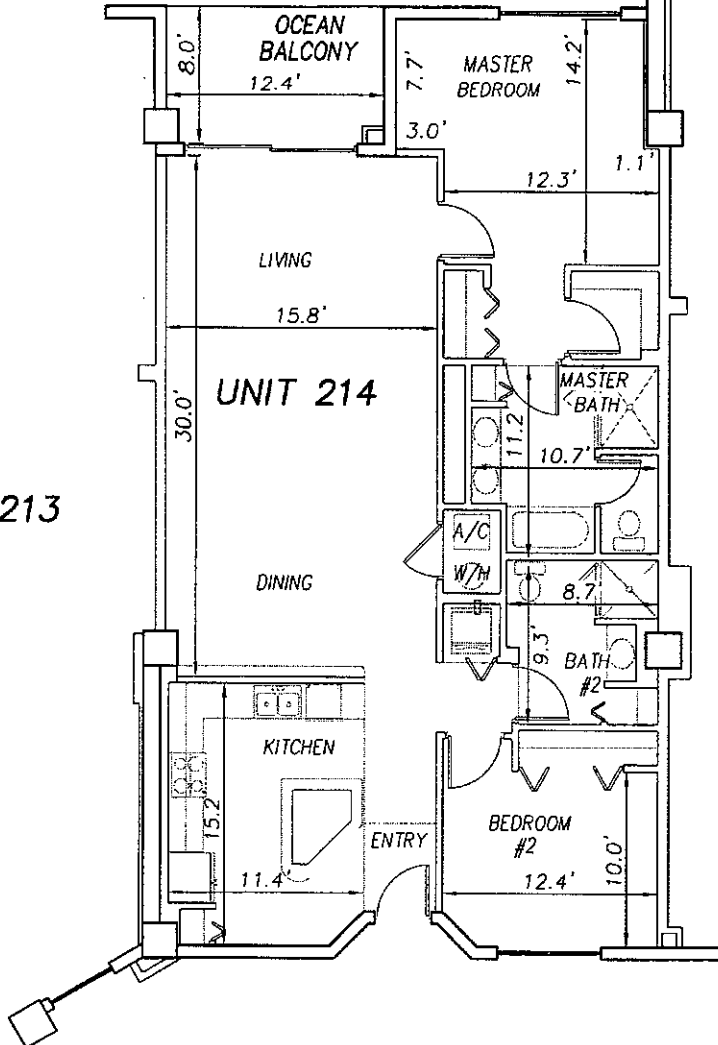
JOB # T3070PCBWI

SHEET 46 OF 213 SHEETS

0 10 20

SCALE 1" = 10'

EXHIBIT 'B'



UNIT 213

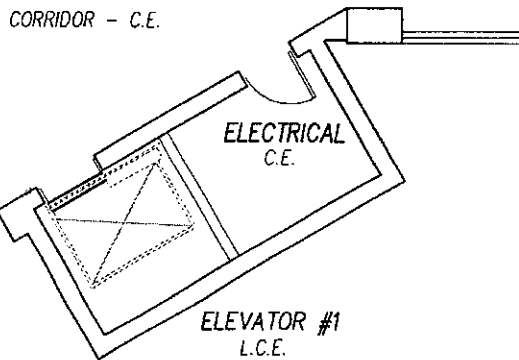
UNIT 214

UNIT 215

**SURF CLUB II
CONDOMINIUM**

SITUATED IN MATANZAS SHORES
FLAGLER COUNTY, FLORIDA

SECOND FLOOR - UNIT 214 (South Wing)



TOMOKA ENGINEERING

CIVIL ENGINEERING & LAND SURVEYING SINCE 1976
DAYTONA BEACH FLAGLER/PALM COAST
Main Office: 900 So. Ridgewood Ave., Daytona Beach, FL 32114
Phone: 386-257-1600 Fax: 386-257-1601
email: tomoko@tomoko-eng.com website: www.tomoko@tomoko-eng.com

DATE ISSUED: 07/23/2003

JOB # T3070PCBW1

SHEET 47 OF 213 SHEETS

P:\land projects T2003\T3070PCBW\dwg\CONDO-sh 32 - 57 2nd Fl.dwg 09/11/2003 09:23:50 AM EDT

0 10 20

OFF REC 0983 PAGE 0209 EXHIBIT 'B'

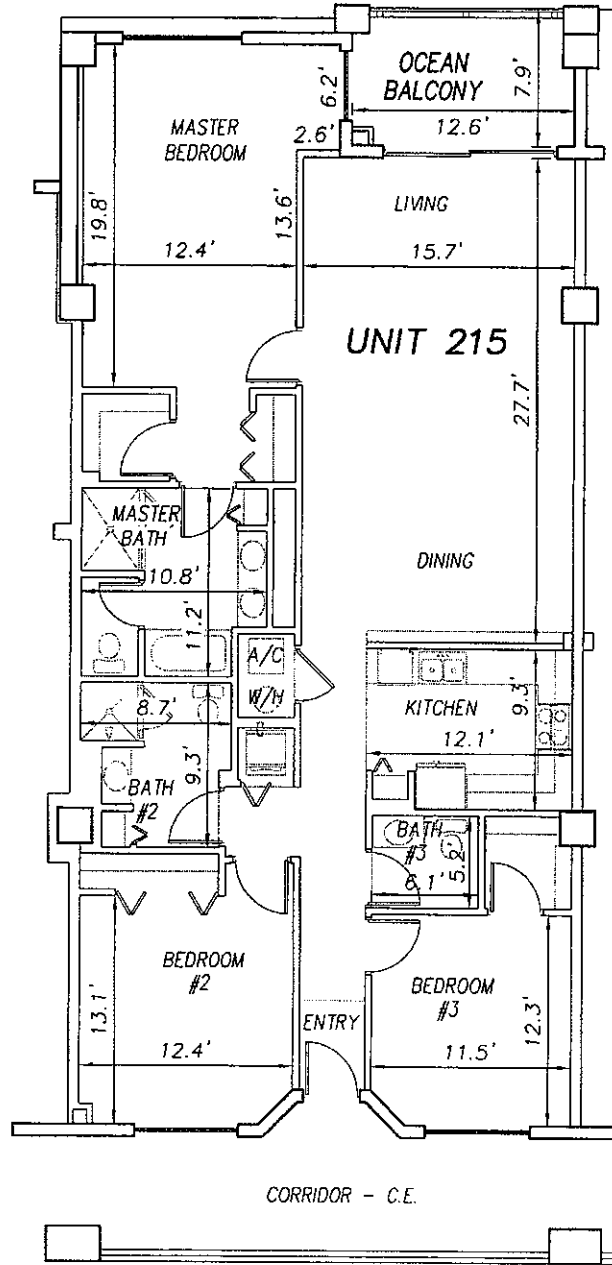
SCALE 1" = 10'



UNIT 214

UNIT 215

UNIT 216



P:\land projects T2003\T3070PCBW\CONDO-sh 32 - 57 2nd Fl.dwg 09/11/2003 09:23:50 AM EDT

SURF CLUB II
CONDOMINIUM
 SITUATED IN MATANZAS SHORES
 FLAGLER COUNTY, FLORIDA
SECOND FLOOR - UNIT 215 (South Wing)



TOMOKA ENGINEERING
 CIVIL ENGINEERING & LAND SURVEYING SINCE 1976
 DAYTONA BEACH FLAGLER/PALM COAST
 Main Office: 900 So. Ridgewood Ave., Daytona Beach, FL 32114
 Phone: 386-257-1900 Fax: 386-257-1901
 email: tomoka@tomoka-eng.com website: www.tomoka-tomoka-eng.com

DATE ISSUED: 07/23/2003

JOB # T3070PCBW/

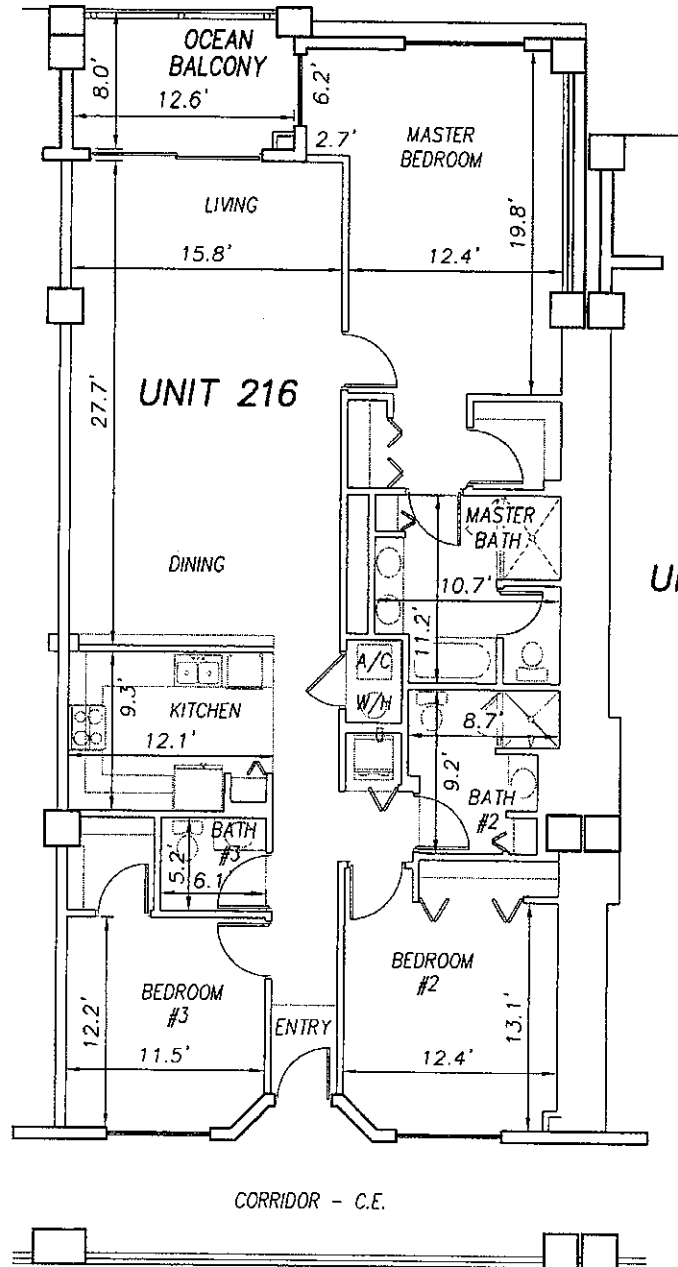
SHEET 48 OF 213 SHEETS

0 10 20

OFF REC 0983 PAGE 0210

EXHIBIT 'B'

SCALE 1" = 10'



UNIT 215

UNIT 216

UNIT 217

P:\land projects\T3070PCBWI\dwg\CONDO-sh 32 - 57 2nd Fl.dwg 09/11/2003 09:23:50 AM EDT

**SURF CLUB II
CONDOMINIUM**
SITUATED IN MATANZAS SHORES
FLAGLER COUNTY, FLORIDA
SECOND FLOOR - UNIT 216 (South Wing)



TOMOKA ENGINEERING
CIVIL ENGINEERING & LAND SURVEYING SINCE 1976
DAYTONA BEACH FLAGLER/PALM COAST
Main Office: 900 So. Ridgewood Ave., Daytona Beach, FL 32114
Phone: 386-257-1500 Fax: 386-257-1501
email: tomoka@tomoka-eng.com website: www.tomoka@tomoka-eng.com

DATE ISSUED: 07/23/2003

JOB # T3070PCBWI

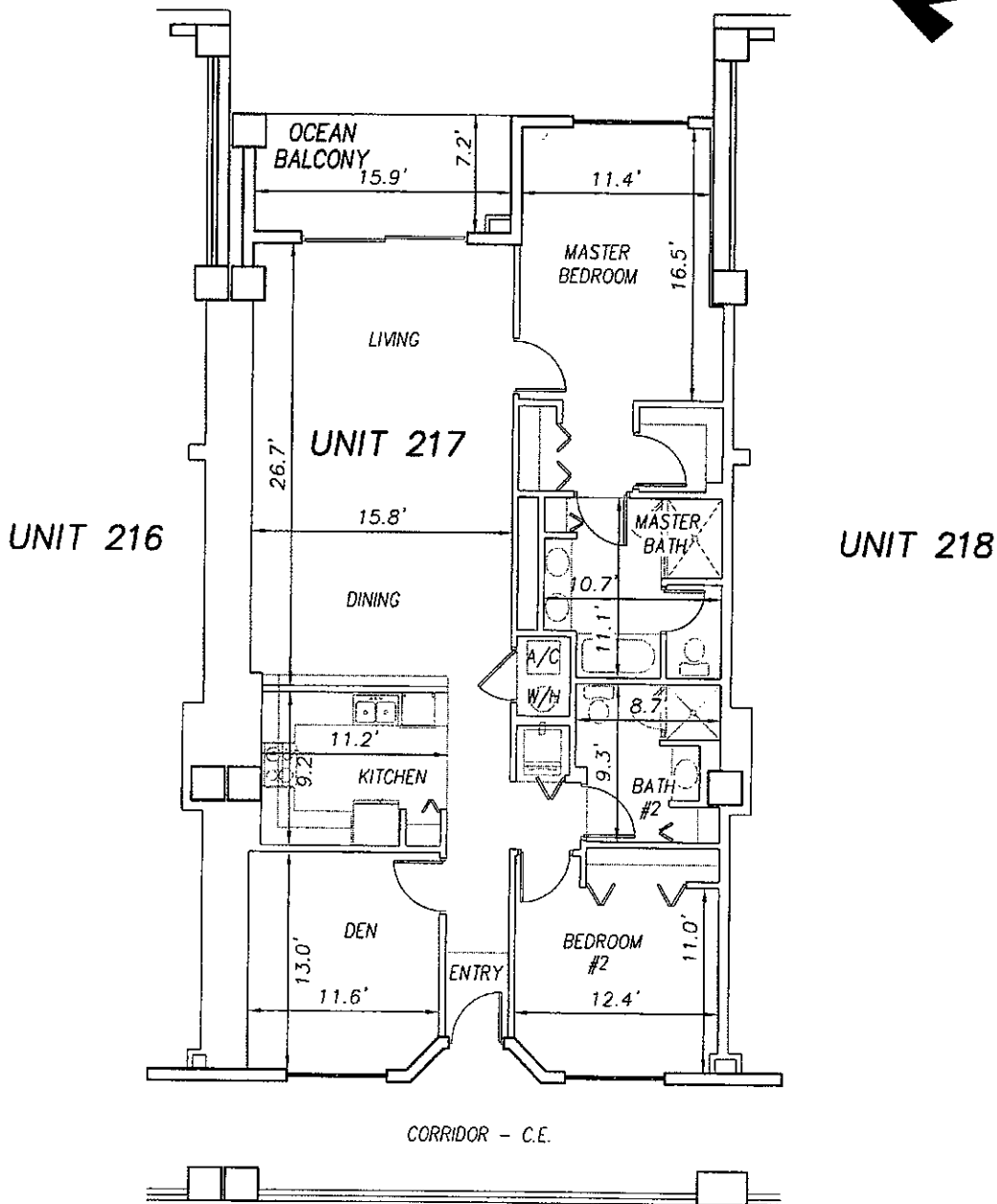
SHEET 49 OF 213 SHEETS

0 10 20

OFF REC 0983 PAGE 0211

EXHIBIT 'B'

SCALE 1" = 10'



P:\land projects T2003\T3070PCBW\dwg\CONDO-sh 32 - 57 2nd Fl.dwg 09/11/2003 09:23:50 AM EDT

SURF CLUB II
CONDOMINIUM
 SITUATED IN MATANZAS SHORES
 FLAGLER COUNTY, FLORIDA
SECOND FLOOR - UNIT 217 (South Wing)



TOMOKA ENGINEERING
 CIVIL ENGINEERING & LAND SURVEYING SINCE 1976
 DAYTONA BEACH FLAGLER/PALM COAST
 Main Office: 900 So. Ridgewood Ave., Daytona Beach, FL 32114
 Phone: 386-257-1600 Fax: 386-257-1601
 email: tomoka@tomoka-eng.com website: www.tomoka@tomoka-eng.com

DATE ISSUED: 07/23/2003

JOB # T3070PCBW1

SHEET 50 OF 213 SHEETS

0 10 20

SCALE 1" = 10'

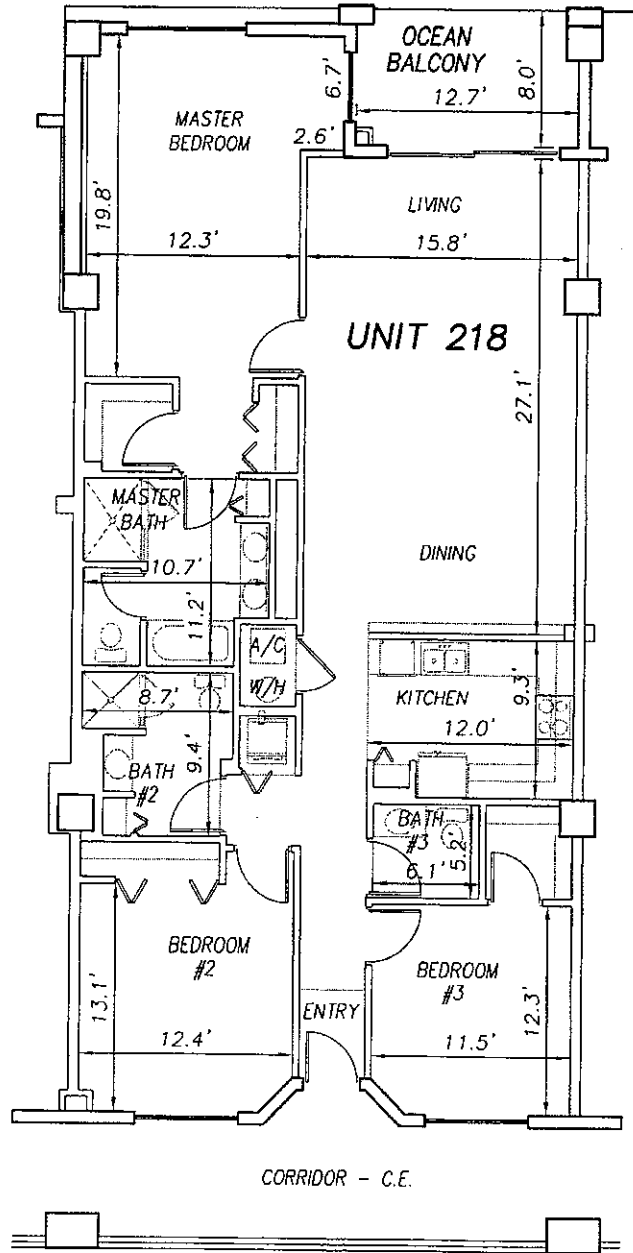
OFF REC 0983 PAGE 0212 EXHIBIT 'B'



UNIT 217

UNIT 218

UNIT 219



P:\land projects T2003\T3070PCBWI\dwg\CONDO--sh_32 - 57 2nd Fl.dwg 09/11/2003 09:23:50 AM EDT

SURF CLUB II
CONDOMINIUM
 SITUATED IN MATANZAS SHORES
 FLAGLER COUNTY, FLORIDA
SECOND FLOOR - UNIT 218 (South Wing)



TOMOKA ENGINEERING
 CIVIL ENGINEERING & LAND SURVEYING SINCE 1976
 DAYTONA BEACH FLAGLER/PALM COAST
 Main Office: 900 So. Ridgewood Ave., Daytona Beach, FL 32114
 Phone: 386-257-1600 Fax: 386-257-1601
 email: tomoka@tomoka-eng.com website: www.tomoka@tomoka-eng.com

DATE ISSUED: 07/23/2003

JOB # T3070PCBWI

SHEET 51 OF 213 SHEETS

0 10 20

OFF REC 0983 PAGE 0213 EXHIBIT 'B'

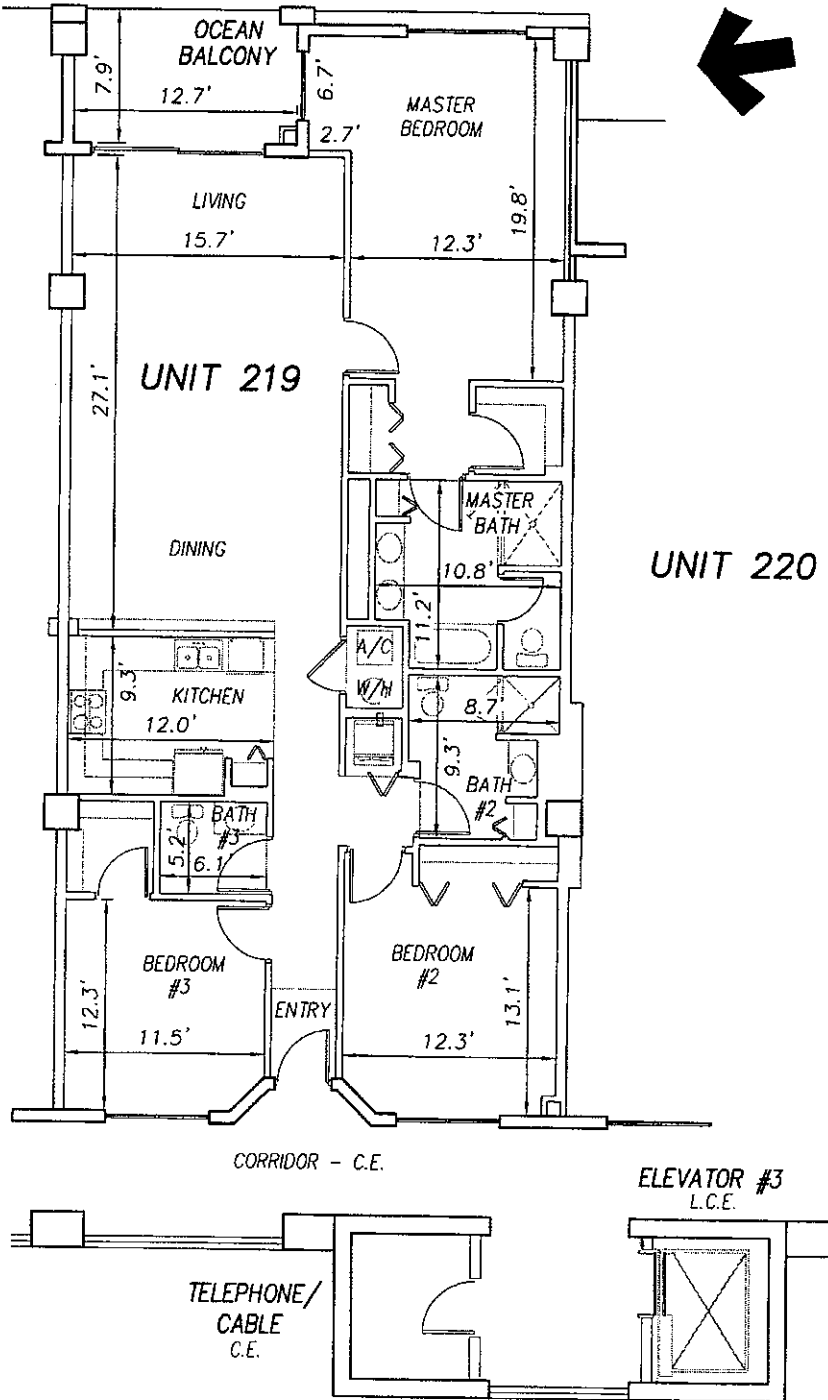
SCALE 1" = 10'



UNIT 218

UNIT 219

UNIT 220



P:\land projects T2003\T3070PCBWI\dwg\CONDO-sh 32 - 57 2nd Fl.dwg 09/11/2003 09:23:50 AM EDT

SURF CLUB II
CONDOMINIUM
 SITUATED IN MATANZAS SHORES
 FLAGLER COUNTY, FLORIDA
SECOND FLOOR - UNIT 219 (South Wing)



TOMOKA ENGINEERING
 CIVIL ENGINEERING & LAND SURVEYING SINCE 1976
 DAYTONA BEACH FLAGLER/PALM COAST
 Main Office: 900 So. Ridgewood Ave., Daytona Beach, FL 32114
 Phone: 386-257-1600 Fax: 386-257-1601
 email: tomoka@tomoka-eng.com website: www.tomoka@tomoka-eng.com

DATE ISSUED: 07/23/2003

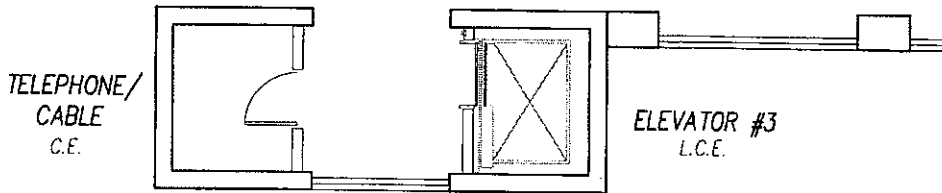
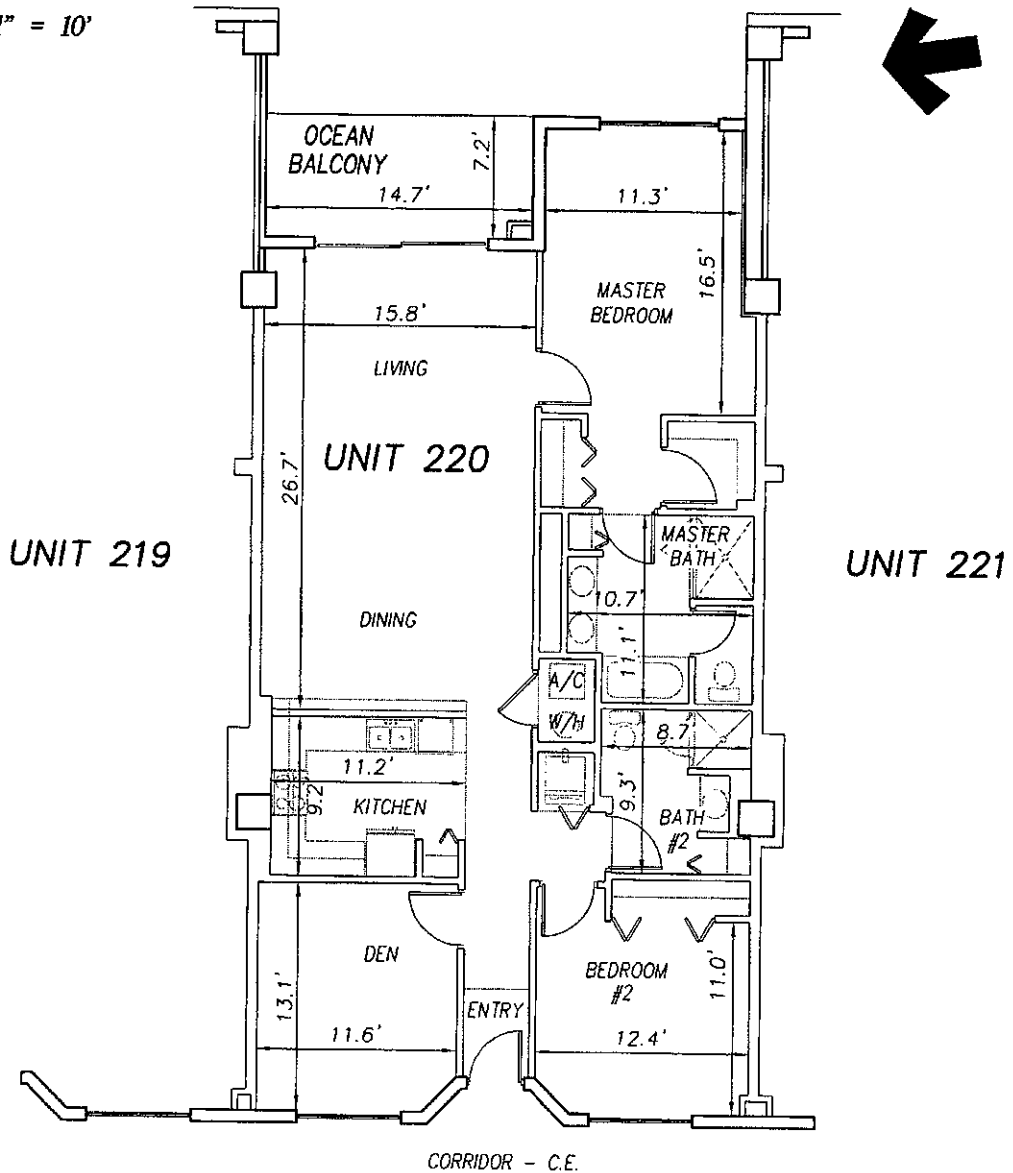
JOB # T3070PCBWI

SHEET 52 OF 213 SHEETS

0 10 20

OFF REC 0983 PAGE 0214 EXHIBIT 'B'

SCALE 1" = 10'



SURF CLUB II
CONDOMINIUM
 SITUATED IN MATANZAS SHORES
 FLAGLER COUNTY, FLORIDA
SECOND FLOOR - UNIT 220 (South Wing)



TOMOKA ENGINEERING
 CIVIL ENGINEERING & LAND SURVEYING SINCE 1976
 DAYTONA BEACH FLAGLER/PALM COAST
 Main Office: 900 So. Ridgewood Ave., Daytona Beach, FL 32114
 Phone: 386-257-1800 Fax: 386-257-1801
 email: tomoka@tomoka-eng.com website: www.tomoka@tomoka-eng.com

DATE ISSUED: 07/23/2003

JOB # T3070PCBWI

SHEET 53 OF 213 SHEETS

P:\cond projects T2003\T3070PCBWI\dwg\CONDO--sh 32 - 57 2nd Fl.dwg 09/11/2003 09:23:50 AM EDT

0 10 20

SCALE 1" = 10'

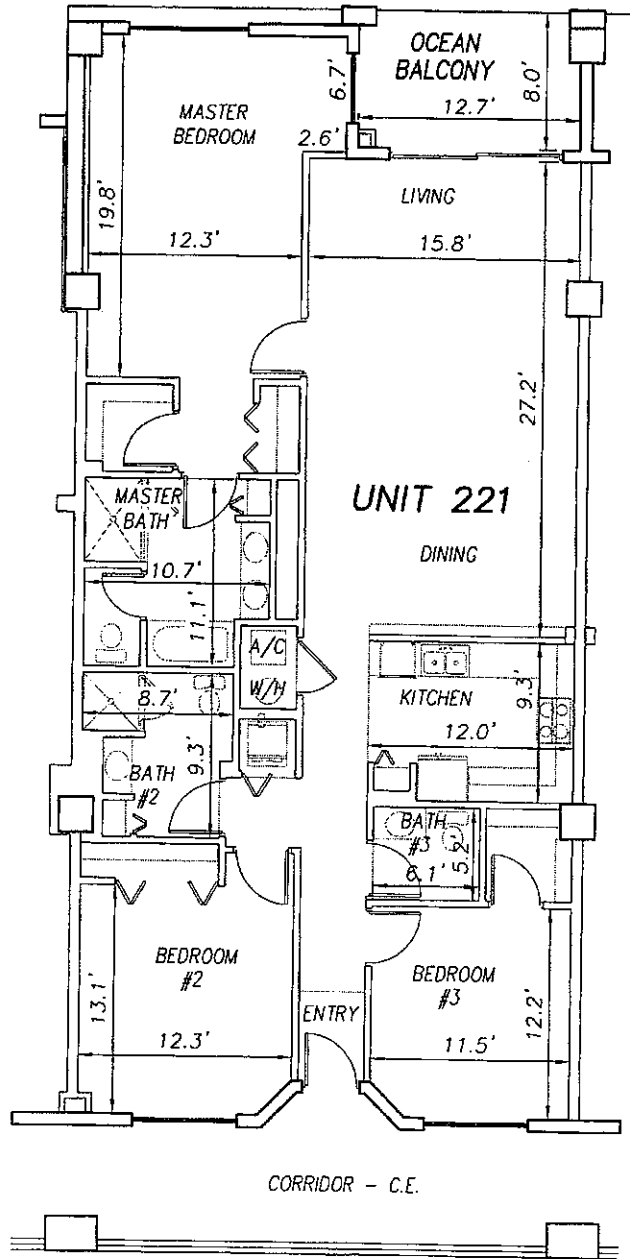
OFF REC 0983 PAGE 0215 EXHIBIT 'B'



UNIT 220

UNIT 221

UNIT 222



P:\land projects T2003\T3070PCBWI\dwg\CONDO-sh 32 - 57 2nd Fl.dwg 09/11/2003 09:23:50 AM EDT

**SURF CLUB II
CONDOMINIUM**
SITUATED IN MATANZAS SHORES
FLAGLER COUNTY, FLORIDA
SECOND FLOOR - UNIT 221 (South Wing)



TOMOKA ENGINEERING
CIVIL ENGINEERING & LAND SURVEYING SINCE 1976
DAYTONA BEACH FLAGLER/PALM COAST
Main Office: 900 So. Ridgewood Ave., Daytona Beach, FL 32114
Phone: 386-257-1800 Fax: 386-257-1801
email: tomoka@tomoka-eng.com website: www.tomoka@tomoka-eng.com

DATE ISSUED: 07/23/2003

JOB # T3070PCBWI

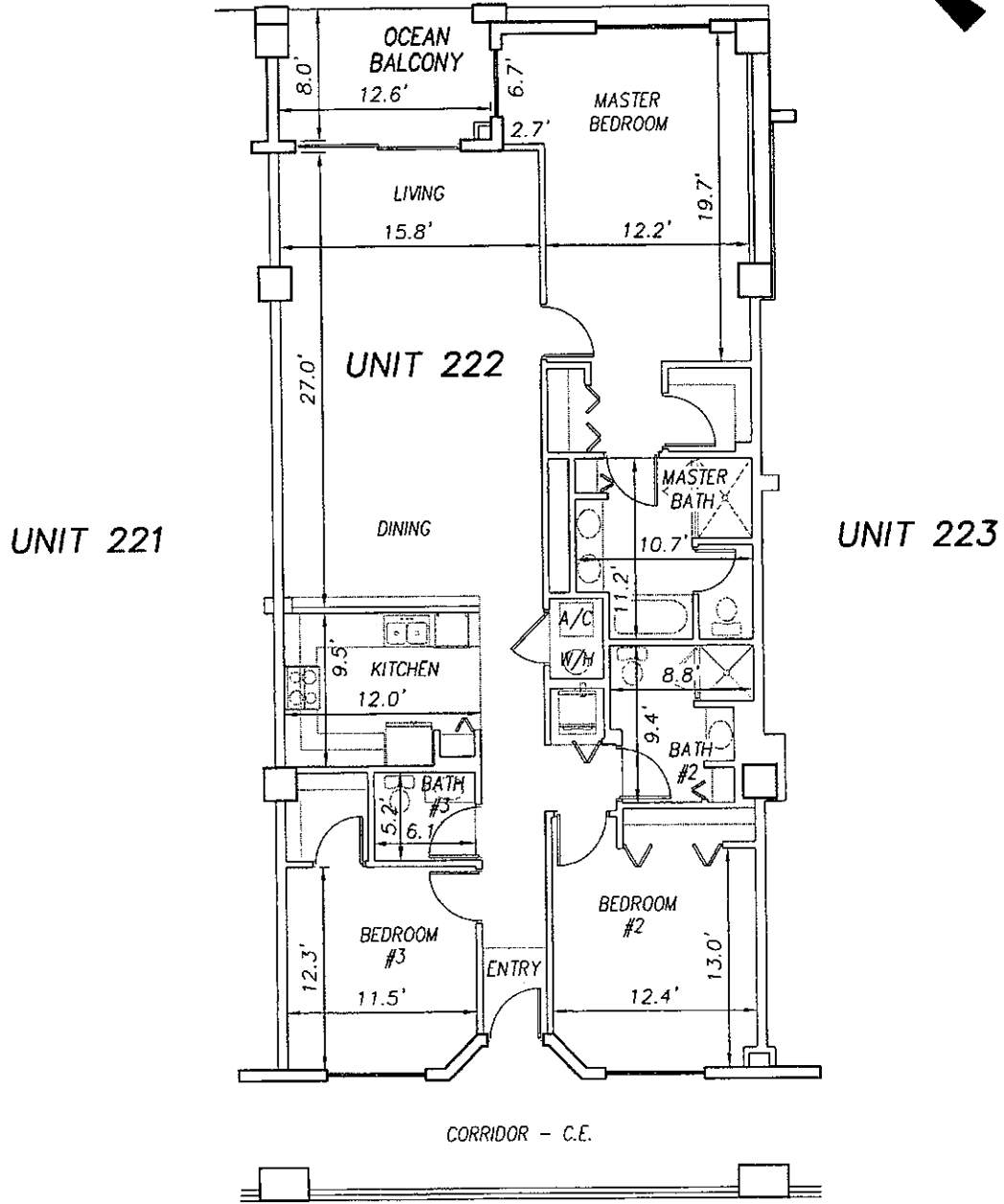
SHEET 54 OF 213 SHEETS

0 10 20

OFF REC 0983 PAGE 0216

EXHIBIT 'B'

SCALE 1" = 10'



p:\land projects T2003\T3070PCBW\dwg\CONDO-sn 32 - 57 2nd Fl.dwg 09/11/2003 09:23:50 AM EDT

SURF CLUB II
CONDOMINIUM
 SITUATED IN MATANZAS SHORES
 FLAGLER COUNTY, FLORIDA
SECOND FLOOR - UNIT 222 (South Wing)



TOMOKA ENGINEERING
 CIVIL ENGINEERING & LAND SURVEYING SINCE 1976
 DAYTONA BEACH FLAGLER/PALM COAST
 Main Office: 900 So. Ridgewood Ave., Daytona Beach, FL 32114
 Phone: 386-257-1600 Fax: 386-257-1601
 email: tomoka@tomoka-eng.com web site: www.tomoka@tomoka-eng.com

DATE ISSUED: 07/23/2003

JOB # T3070PCBW1

SHEET 55 OF 213 SHEETS

EXHIBIT 'B'

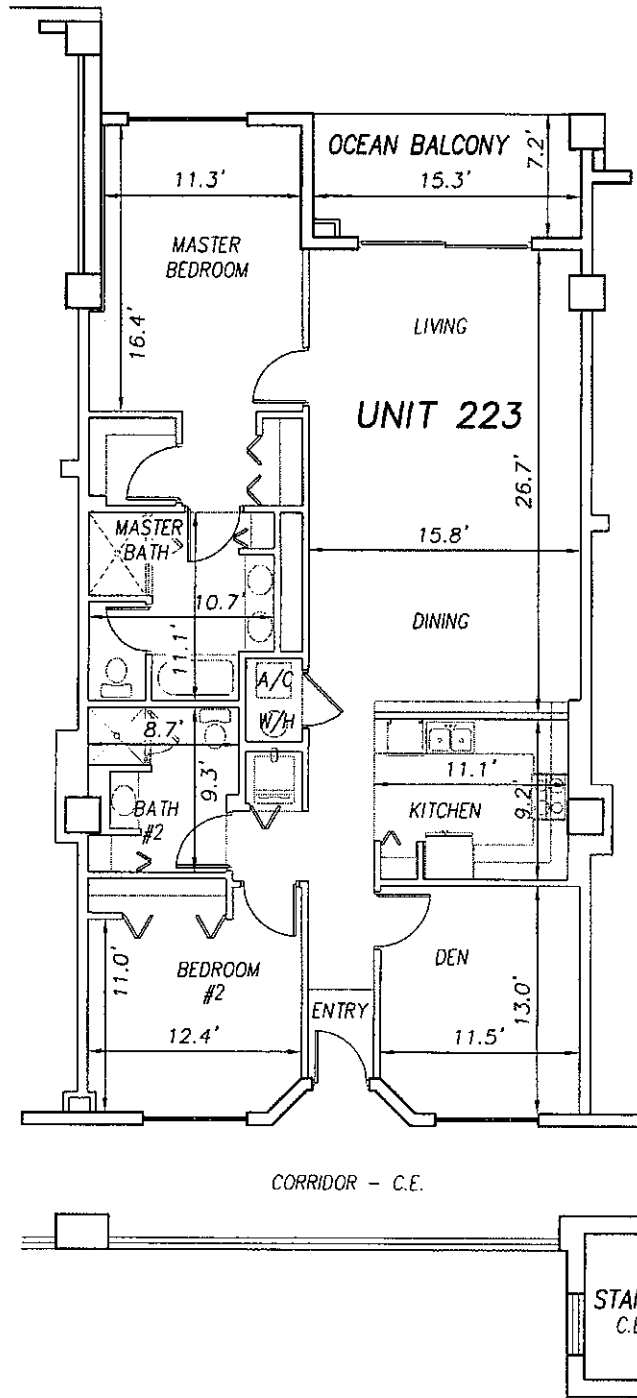
0 10 20

SCALE 1" = 10'



UNIT 222

UNIT 224



P:\land projects T2003\T3070PCBW\dwg\CONDO-sh 32 - 57 2nd Fl.dwg 09/11/2003 09:23:50 AM EDT

**SURF CLUB II
CONDOMINIUM**
SITUATED IN MATANZAS SHORES
FLAGLER COUNTY, FLORIDA
SECOND FLOOR - UNIT 223 (South Wing)



TOMOKA ENGINEERING
CIVIL ENGINEERING & LAND SURVEYING SINCE 1976
DAYTONA BEACH FLAGLER/PALM COAST
Main Office: 900 So. Ridgewood Ave., Daytona Beach, FL 32114
Phone: 386-257-1800 Fax: 386-257-1801
email: tomoka@tomoka-eng.com website: www.tomoka@tomoka-eng.com

DATE ISSUED: 07/23/2003

JOB # T3070PCBW1

SHEET 56 OF 213 SHEETS

0 10 20

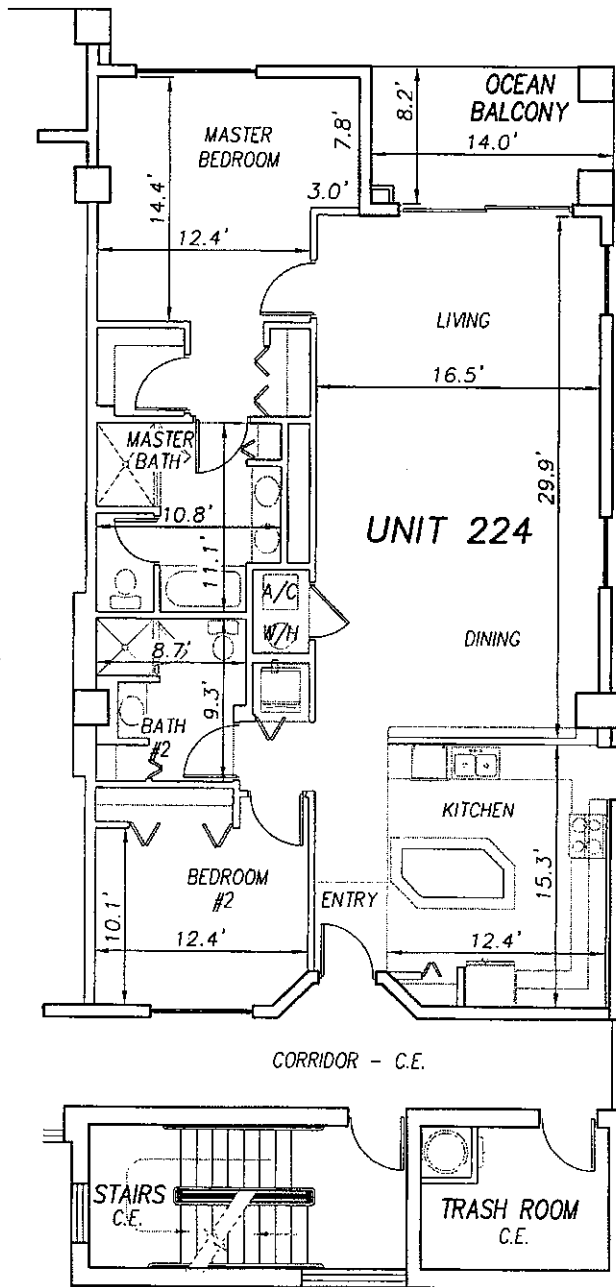
SCALE 1" = 10'

OFF REC 0983 PAGE 0218

EXHIBIT 'B'



UNIT 223



**SURF CLUB II
CONDOMINIUM**

SITUATED IN MATANZAS SHORES
FLAGLER COUNTY, FLORIDA

SECOND FLOOR - UNIT 224 (South Wing)



TOMOKA ENGINEERING

CIVIL ENGINEERING & LAND SURVEYING SINCE 1976
DAYTONA BEACH FLAGLER/PALM COAST
Main Office: 900 So. Ridgewood Ave., Daytona Beach, FL 32114
Phone: 386-257-1600 Fax: 386-257-1601
email: tomoka@tomoka-eng.com website: www.tomoka@tomoka-eng.com

DATE ISSUED: 07/23/2003

JOB # T3070PCBWI

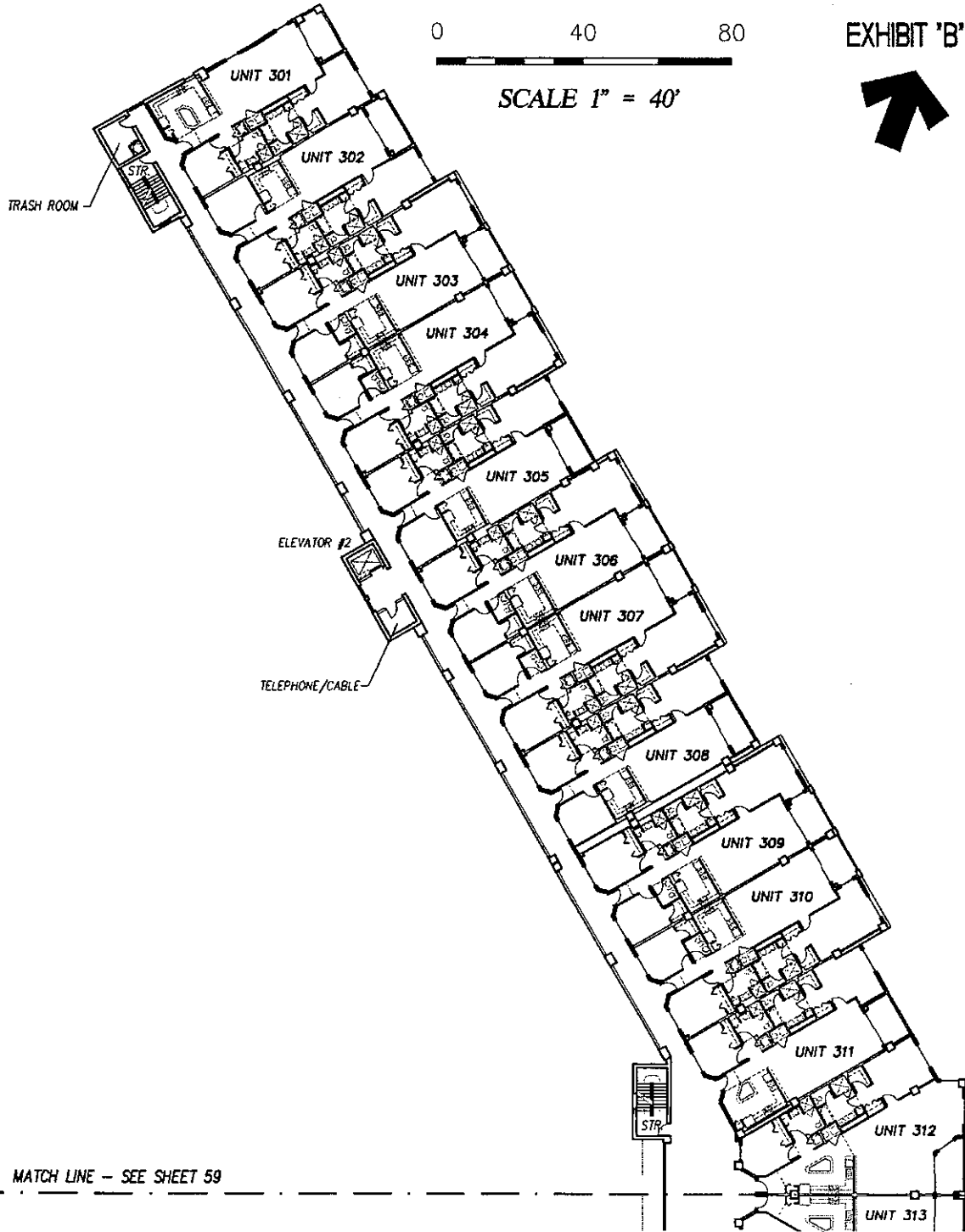
SHEET 57 OF 213 SHEETS

P:\land projects\T3070PCBWI\dwg\CONDO-sh 32 - 57 2nd Fl.dwg 09/11/2003 09:23:50 AM EDT

0 40 80

EXHIBIT 'B'

SCALE 1" = 40'



MATCH LINE - SEE SHEET 59

**SURF CLUB II
CONDOMINIUM**

SITUATED IN MATANZAS SHORES
FLAGLER COUNTY, FLORIDA

THIRD FLOOR - OVERALL LAYOUT (North Wing)



TOMOKA ENGINEERING

CIVIL ENGINEERING & LAND SURVEYING SINCE 1976
DAYTONA BEACH FLAGLER/PALM COAST
Main Office: 900 So. Ridgewood Ave., Daytona Beach, FL 32114
Phone: 386-257-1600 Fax: 386-257-1601
www.tomoka.com tomoka-eng.com

DATE ISSUED: 07/23/2003

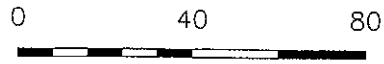
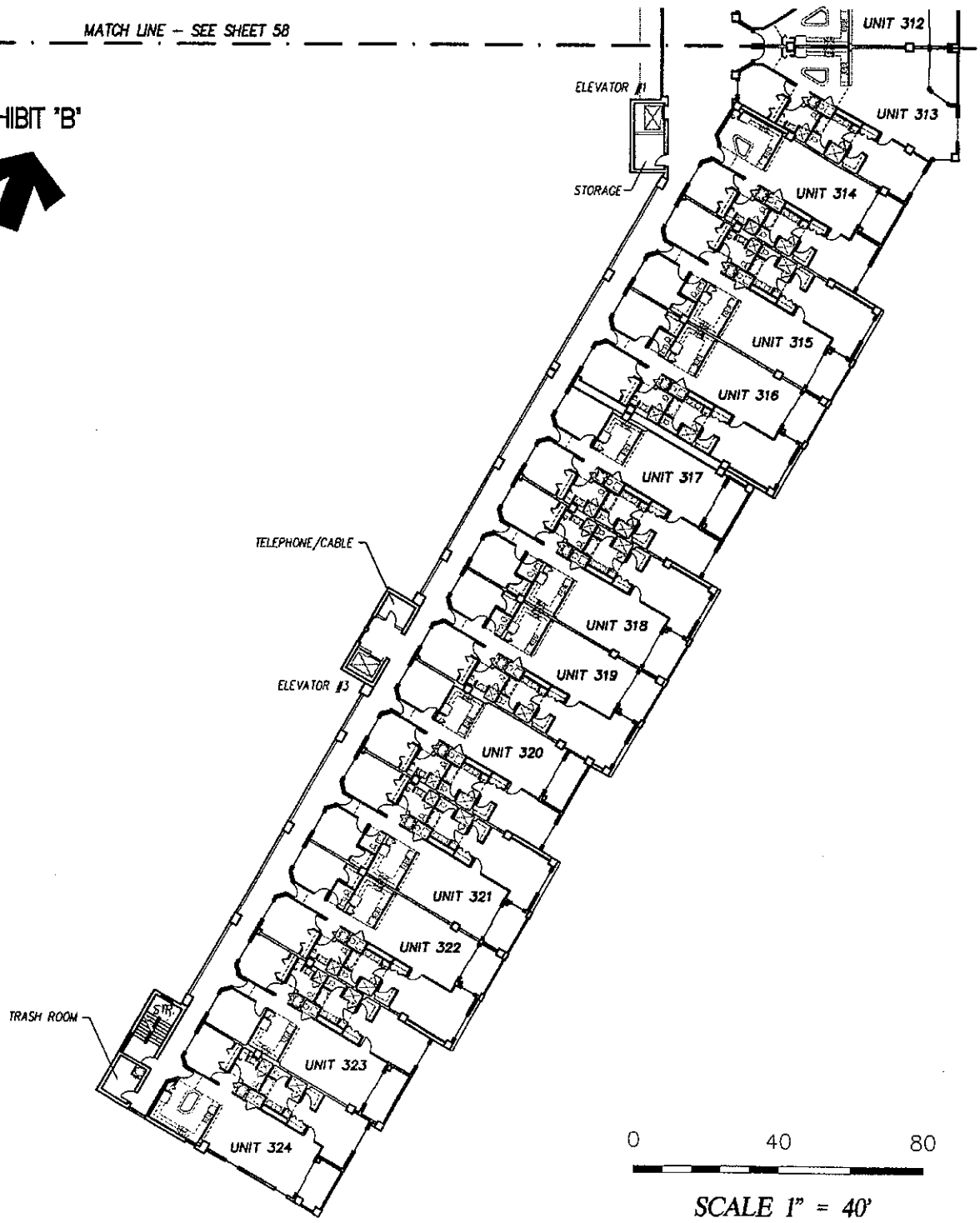
JOB # T3070PCBWI

SHEET 58 OF 213 SHEETS

P:\land projects T2003\T3070PCBWI\dwg\CONDO-sh 58 - 83 3rd Fl.dwg 09/11/2003 09:36:31 AM EDT

MATCH LINE - SEE SHEET 58

EXHIBIT 'B'



SCALE 1" = 40'

**SURF CLUB II
CONDOMINIUM**

SITUATED IN MATANZAS SHORES
FLAGLER COUNTY, FLORIDA

THIRD FLOOR - OVERALL LAYOUT (South Wing)



TOMOKA ENGINEERING
CIVIL ENGINEERING & LAND SURVEYING SINCE 1976
DAYTONA BEACH FLAGLER/PALM COAST
Main Office: 900 So. Ridgewood Ave., Daytona Beach, FL 32114
Phone: 386-257-1600 Fax: 386-257-1601
email: tomoka@tomoka-eng.com website: www.tomoka@tomoka-eng.com

LB #2232

DATE ISSUED: 07/23/2003

JOB # T3070PCBW1

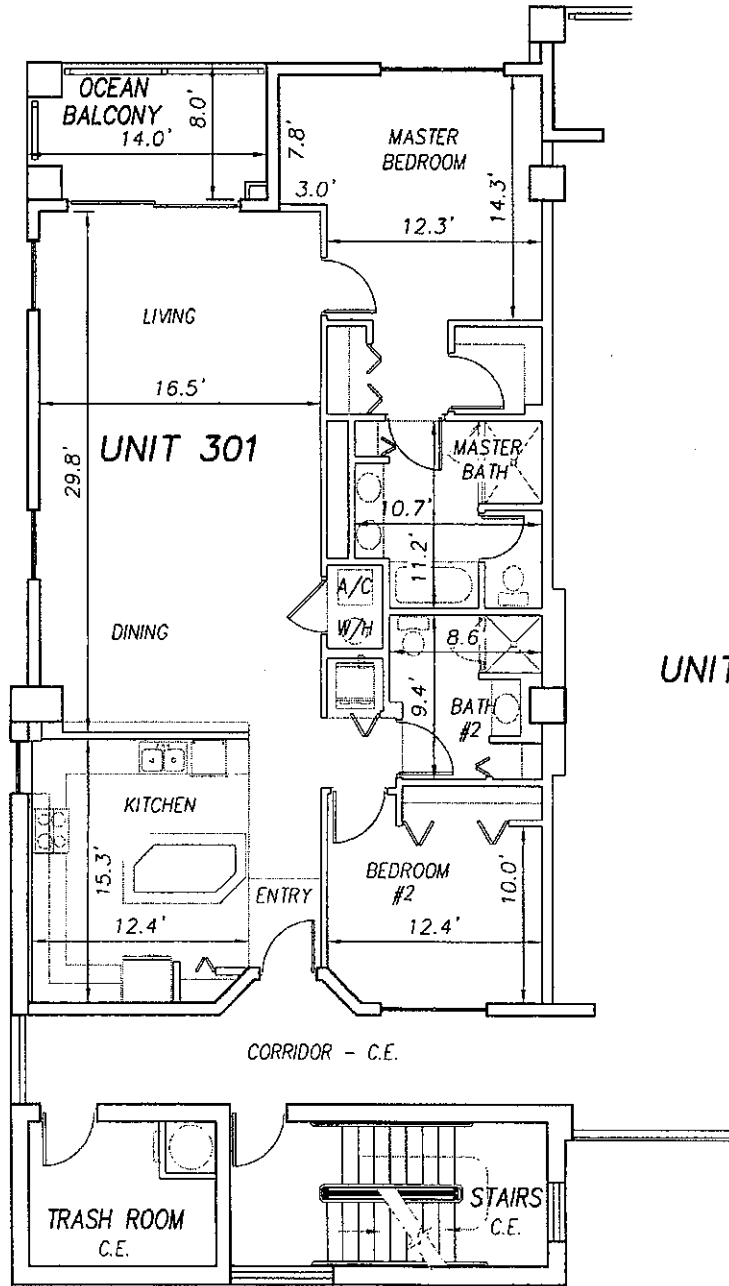
SHEET 59 OF 213 SHEETS

P:\land projects T2003\T3070PCBW1\dwg\CONDO-sh 58 - 83 3rd Fl.dwg 09/11/2003 09:36:31 AM EDT

0 10 20

SCALE 1" = 10'

OFF REC 0983 PAGE 0221 EXHIBIT 'B'



UNIT 302

**SURF CLUB II
CONDOMINIUM**

SITUATED IN MATANZAS SHORES
FLAGLER COUNTY, FLORIDA

THIRD FLOOR - UNIT 301 (North Wing)



TOMOKA ENGINEERING

CIVIL ENGINEERING & LAND SURVEYING SINCE 1976
DAYTONA BEACH FLAGLER/PALM COAST

Main Office: 900 So. Ridgewood Ave., Daytona Beach, FL 32114
Phone: 386-257-1800 Fax: 386-257-1801
email: tomoka@tomoka-eng.com website: www.tomoka@tomoka-eng.com

DATE ISSUED: 07/23/2003

JOB # T3070PCBWI

SHEET 60 OF 213 SHEETS

P:\land projects T2003\T3070PCBWI\dwg\CONDO-sh 58 - 83 3rd Fl.dwg 09/11/2003 09:36:31 AM EDT

0 10 20

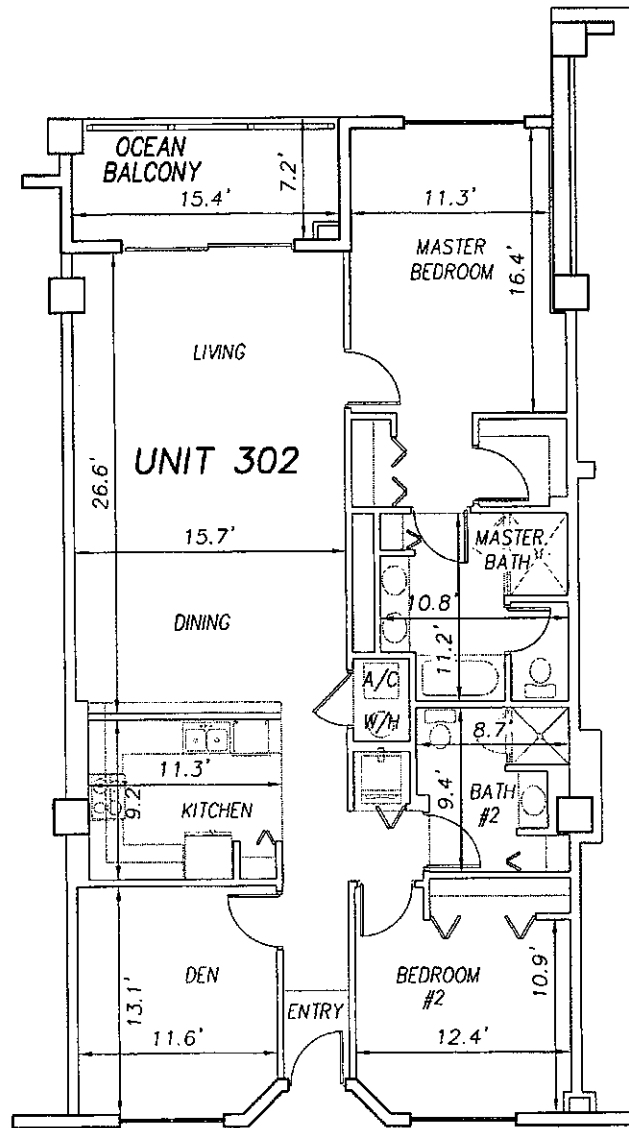
OFF REC 0983 PAGE 0222 EXHIBIT 'B'

SCALE 1" = 10'



UNIT 301

UNIT 303



CORRIDOR - C.E.

STAIRS
C.E.

**SURF CLUB II
CONDOMINIUM**

SITUATED IN MATANZAS SHORES
FLAGLER COUNTY, FLORIDA

THIRD FLOOR - UNIT 302 (North Wing)



TOMOKA ENGINEERING

CIVIL ENGINEERING & LAND SURVEYING SINCE 1976
DAYTONA BEACH FLAGLER/PALM COAST

Main Office: 900 So. Ridgewood Ave., Daytona Beach, FL 32114
Phone: 386-257-1800 Fax: 386-257-1801
email: tomoka@tomoka-eng.com website: www.tomoka@tomoka-eng.com

LB #2232

DATE ISSUED: 07/23/2003

JOB # T3070PCBWI

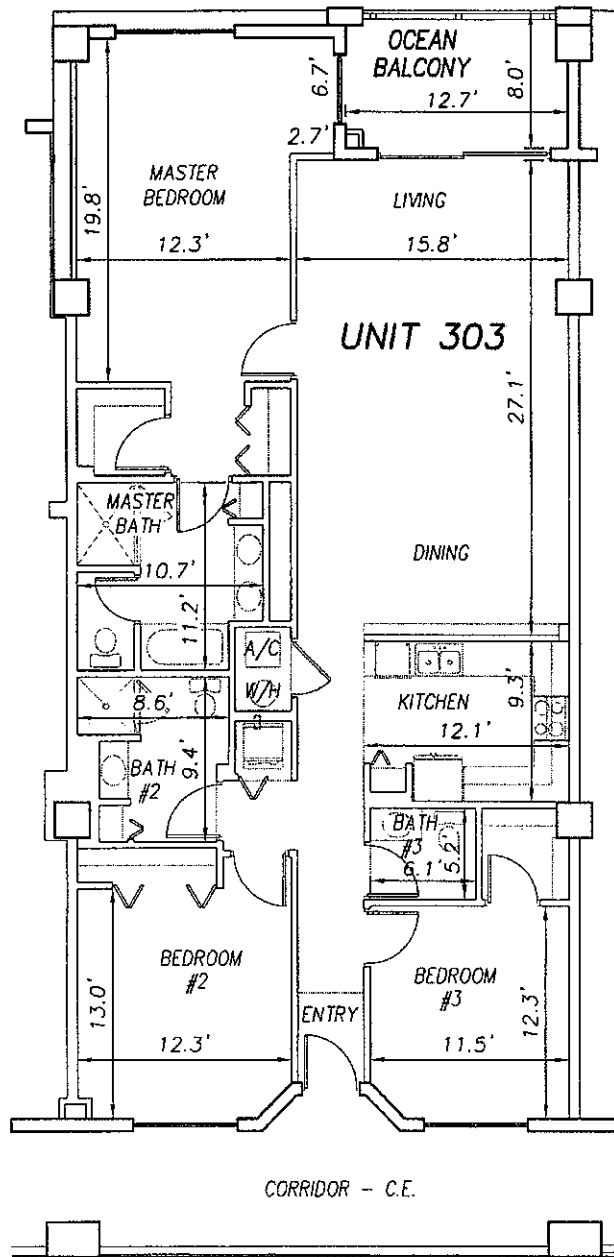
SHEET 61 OF 213 SHEETS

P:\land projects T2003\T3070PCBWI\dwg\CONDO-sh 58 - 83 3rd Fl.dwg 09/11/2003 09:36:31 AM EDT

0 10 20

SCALE 1" = 10'

OFF REC 0983 PAGE 0223 EXHIBIT 'B'



UNIT 302

UNIT 304

UNIT 303

**SURF CLUB II
CONDOMINIUM**

SITUATED IN MATANZAS SHORES
FLAGLER COUNTY, FLORIDA

THIRD FLOOR - UNIT 303 (North Wing)



TOMOKA ENGINEERING

CIVIL ENGINEERING & LAND SURVEYING SINCE 1976
DAYTONA BEACH FLAGLER/PALM COAST
Main Office: 900 So. Ridgewood Ave., Daytona Beach, FL 32114
Phone: 386-257-1800 Fax: 386-257-1801
email: tomoka@tomoka-eng.com website: www.tomoka@tomoka-eng.com

DATE ISSUED: 07/23/2003

JOB # T3070PCBW1

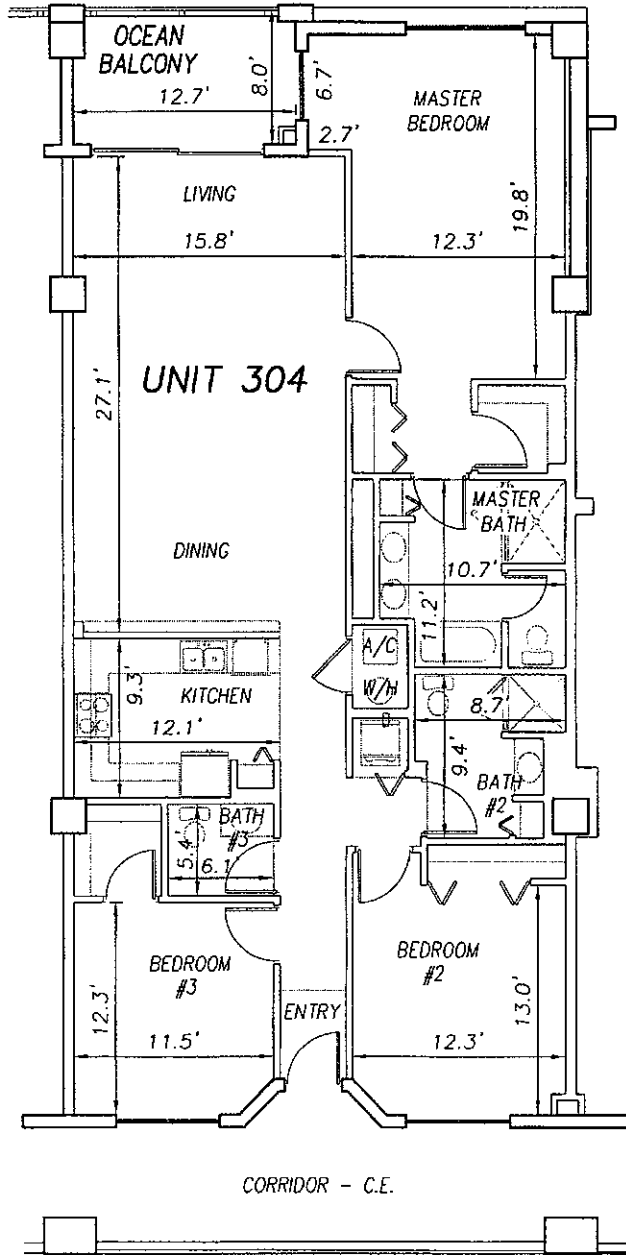
SHEET 62 OF 213 SHEETS

P:\cond_projects\T2003\T3070PCBW1.dwg\CONDO-sh 58 - 83 3rd Fl.dwg 09/11/2003 09:36:31 AM EDT

0 10 20

SCALE 1" = 10'

OFF REC 0983 PAGE 0224 EXHIBIT 'B'



UNIT 303

UNIT 304

UNIT 305

**SURF CLUB II
CONDOMINIUM**

SITUATED IN MATANZAS SHORES
FLAGLER COUNTY, FLORIDA

THIRD FLOOR - UNIT 304 (North Wing)



TOMOKA ENGINEERING

CIVIL ENGINEERING & LAND SURVEYING SINCE 1976
DAYTONA BEACH FLAGLER/PALM COAST

Main Office: 900 So. Ridgewood Ave., Daytona Beach, FL 32114
Phone: 386-257-1600 Fax: 386-257-1601
email: tomoka@tomoka-eng.com website: www.tomoka@tomoka-eng.com

DATE ISSUED: 07/23/2003

JOB # T3070PCBW1

SHEET 63 OF 213 SHEETS

P:\land projects\T3070PCBW1\dwg\CONDO-sh 58 - 83 3rd Fl.dwg 09/11/2003 09:36:31 AM EDT

0 10 20

SCALE 1" = 10'

OFF REC 0983 PAGE 0225

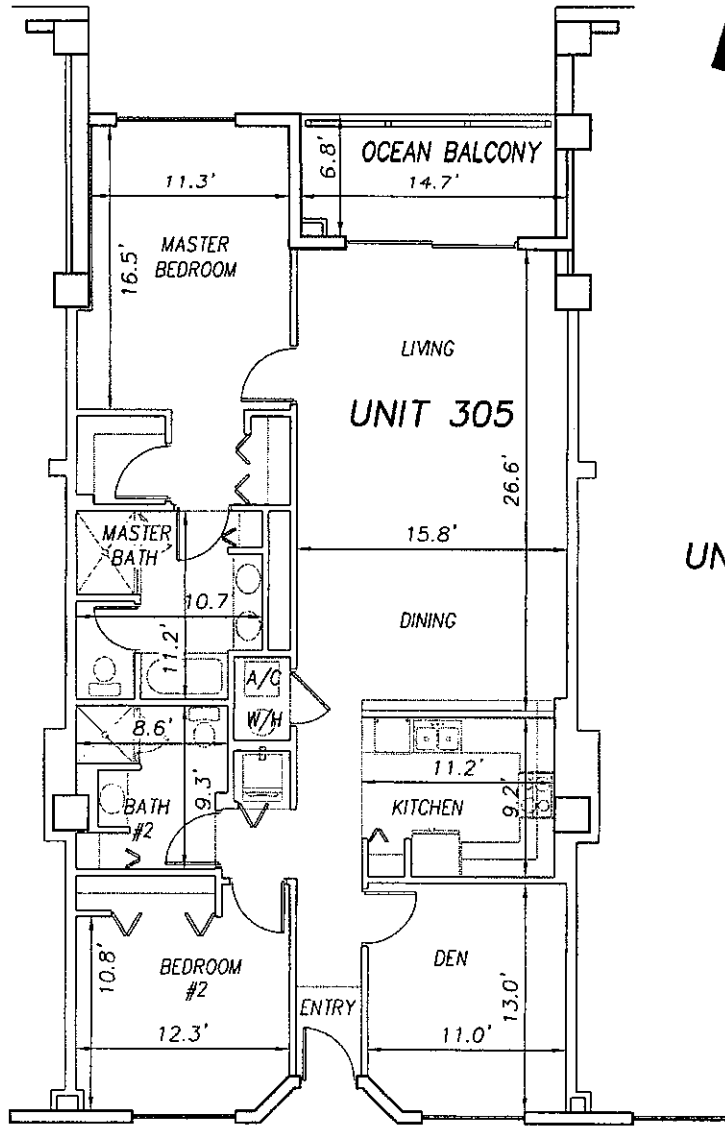
EXHIBIT 'B'



UNIT 304

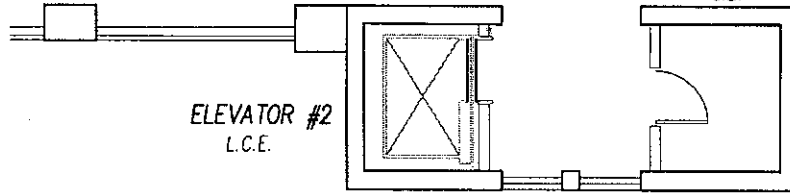
UNIT 305

UNIT 306



CORRIDOR - C.E.

TELEPHONE/CABLE C.E.



**SURF CLUB II
CONDOMINIUM**

SITUATED IN MATANZAS SHORES
FLAGLER COUNTY, FLORIDA

THIRD FLOOR - UNIT 305 (North Wing)



TOMOKA ENGINEERING

CIVIL ENGINEERING & LAND SURVEYING SINCE 1976
DAYTONA BEACH FLAGLER/PALM COAST

Main Office: 900 So. Ridgewood Ave., Daytona Beach, FL 32114
Phone: 386-257-1500 Fax: 386-257-1501
email: tomoka@tomoka-eng.com website: www.tomoka@tomoka-eng.com

DATE ISSUED: 07/23/2003

JOB # T3070PCBW1

SHEET 64 OF 213 SHEETS

P:\cond_projects\T3070PCBW1\dwg\CONDO-sh 58 ~ 83 3rd Fl.dwg 09/11/2003 09:36:31 AM EDT

0 10 20

OFF REC 0983 PAGE 0226 EXHIBIT 'B'

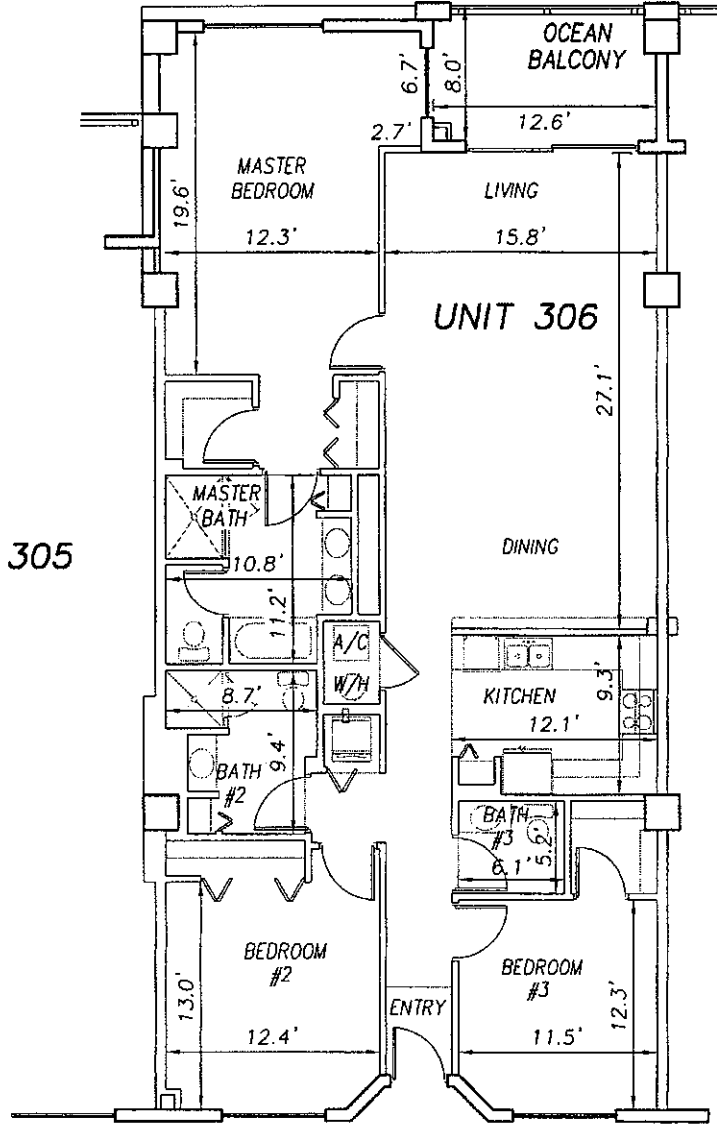
SCALE 1" = 10'



UNIT 305

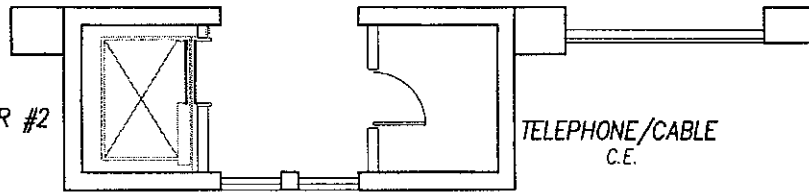
UNIT 306

UNIT 307



CORRIDOR - C.E.

ELEVATOR #2
L.C.E.



TELEPHONE/CABLE
C.E.

**SURF CLUB II
CONDOMINIUM**

SITUATED IN MATANZAS SHORES
FLAGLER COUNTY, FLORIDA

THIRD FLOOR - UNIT 306 (North Wing)



TOMOKA ENGINEERING

CIVIL ENGINEERING & LAND SURVEYING SINCE 1976
DAYTONA BEACH FLAGLER/PALM COAST
Main Office: 900 So. Ridgewood Ave., Daytona Beach, FL 32114
Phone: 386-257-1600 Fax: 386-257-1601
email: tomoka@tomoka-eng.com website: www.tomoka@tomoka-eng.com

DATE ISSUED: 07/23/2003

JOB # T3070PCBW1

SHEET 65 OF 213 SHEETS

P:\land projects T2003\T3070PCBW1.dwg\CONDO-sh 58 - 83 3rd Fl.dwg 09/11/2003 09:36:31 AM EDT